

SEC N CENTRAL AVE & W SCHUBERT AVE / CHICAGO IL



2649 N CENTRAL AVE

NEWER RETAIL SPACE WITH PARKING
IN EXTREMELY DENSE URBAN MARKET

5,888 SF BUILDING
(DIVISIBLE)



2649 N CENTRAL AVE / CHICAGO

AVAILABILITY

- 5,888 SF DIVISIBLE

ADDRESS

2649 N Central Ave
Chicago, IL

NEIGHBORING TENANTS



BANK OF AMERICA



FEATURES

High Visibility Retail Space in Extremely Dense Chicago Neighborhood

Surrounded by Traffic Generating Retail Tenants Including Tony's Fresh Market, Aldi, Fresh Marketplace and Kedplasma and Walgreens

Easy Access From Central Ave & Schubert Ave

20 Convenient Surface Parking Spaces

14,300 VPD Per Day on Central Ave

Large Pylon Signage Available Along Central Ave

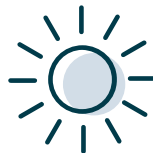
DEMOGRAPHICS WITHIN 1 MILES



Avg
Household
Income
\$91,258



Population
62,529



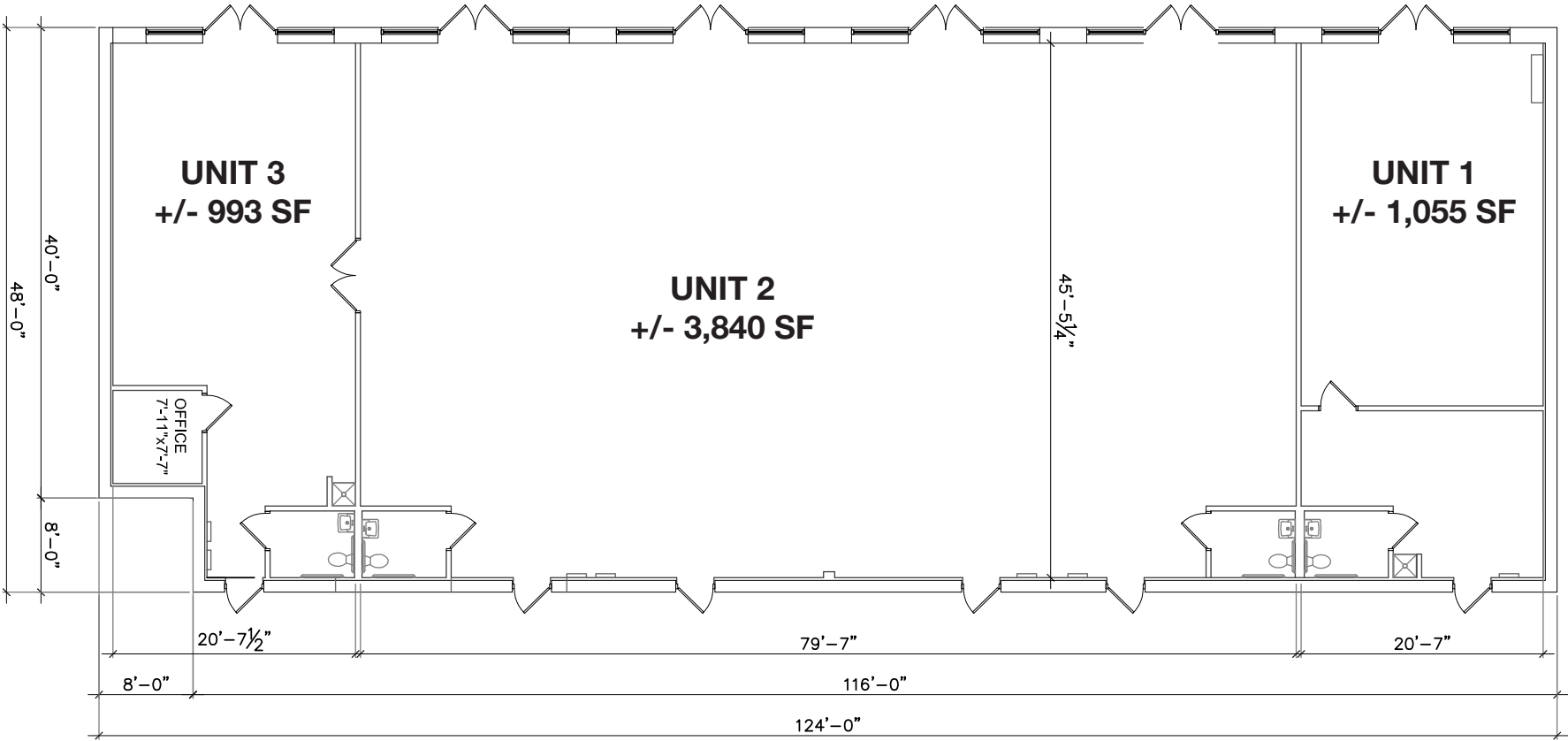
Daytime
Population
40,577



SITE PLAN



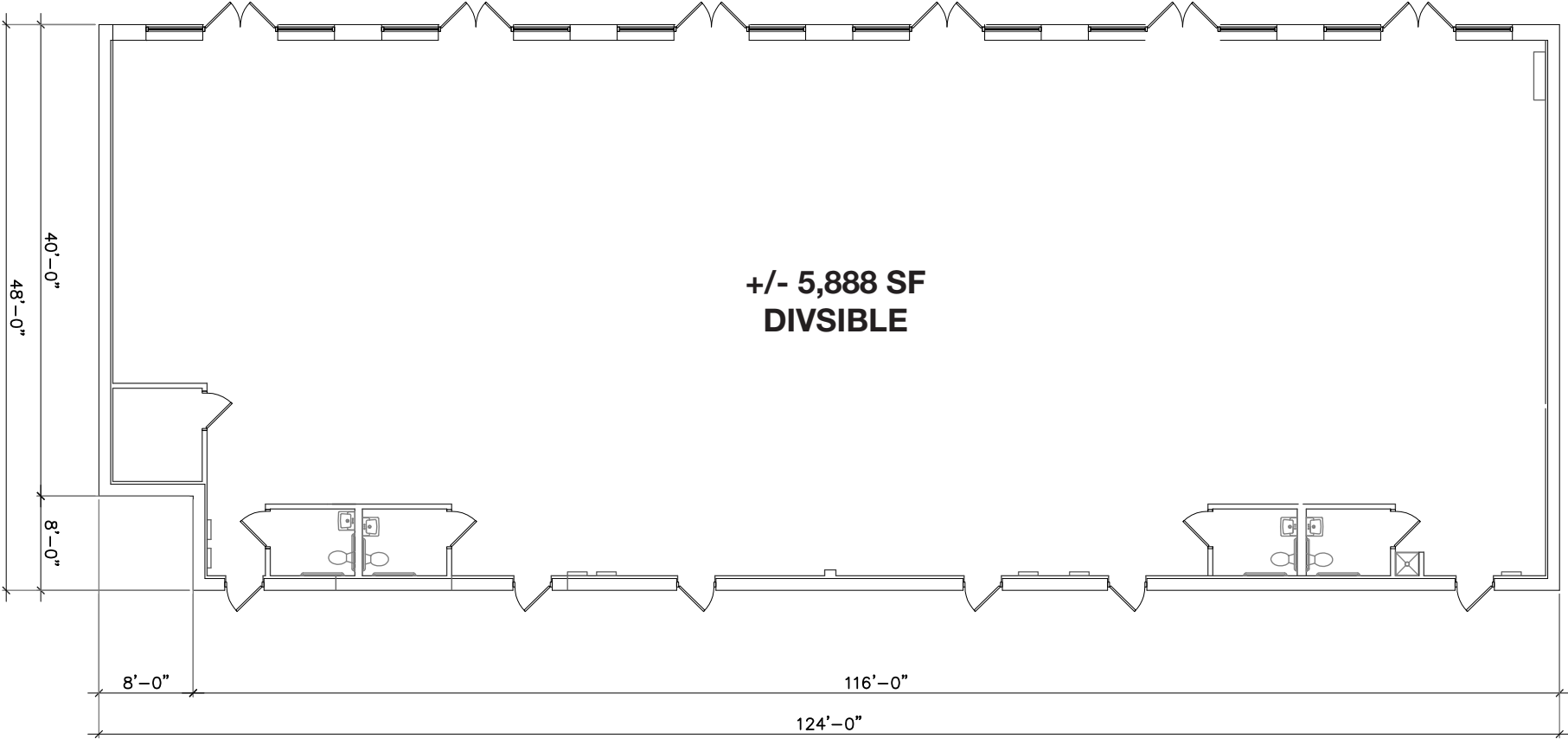
PARKING LOT
20 PARKING SPACES



SITE PLAN (SHELL)



**PARKING LOT
20 PARKING SPACES**



2649 N CENTRAL AVE / CHICAGO

BRENDAN REEDY

630.954.7390

BReedy@MidAmericaGrp.com

JIMMY DANAHER

630.954.7238

JDanaher@MidAmericaGrp.com

GRIFFIN FLEMING

630.954.7320

GFleming@MidAmericaGrp.com

