

PRIME

MULTILEVEL

LARGE BOX

OPPORTUNITY



# 787 ELEVENTH AVENUE

SOUTHWEST CORNER OF 55TH STREET & 11TH AVENUE

CBRE



<b>Ground Floor</b>	20,000 SF
<b>Second Floor</b>	20,000 SF
<b>Third Floor</b>	40,000 SF
<b>*Total</b>	80,000 SF

\*Additional Space can be made available

**Ceiling Height**

- Ground Floor: 15 Feet
- Second & Third Floor: 11 - 13 Feet

**Comments**

- Unique M Zoning permits for Industrial and Automotive uses
- Dedicated Freight Elevator
- Access to Helix for loading and unloading
- Rapidly Growing Residential market
- Located at the base of a newly renovated Class A office building
- Brand New Store Front
- 1/2 block from the West Side Highway
- 10 Minutes to the heart of Midtown

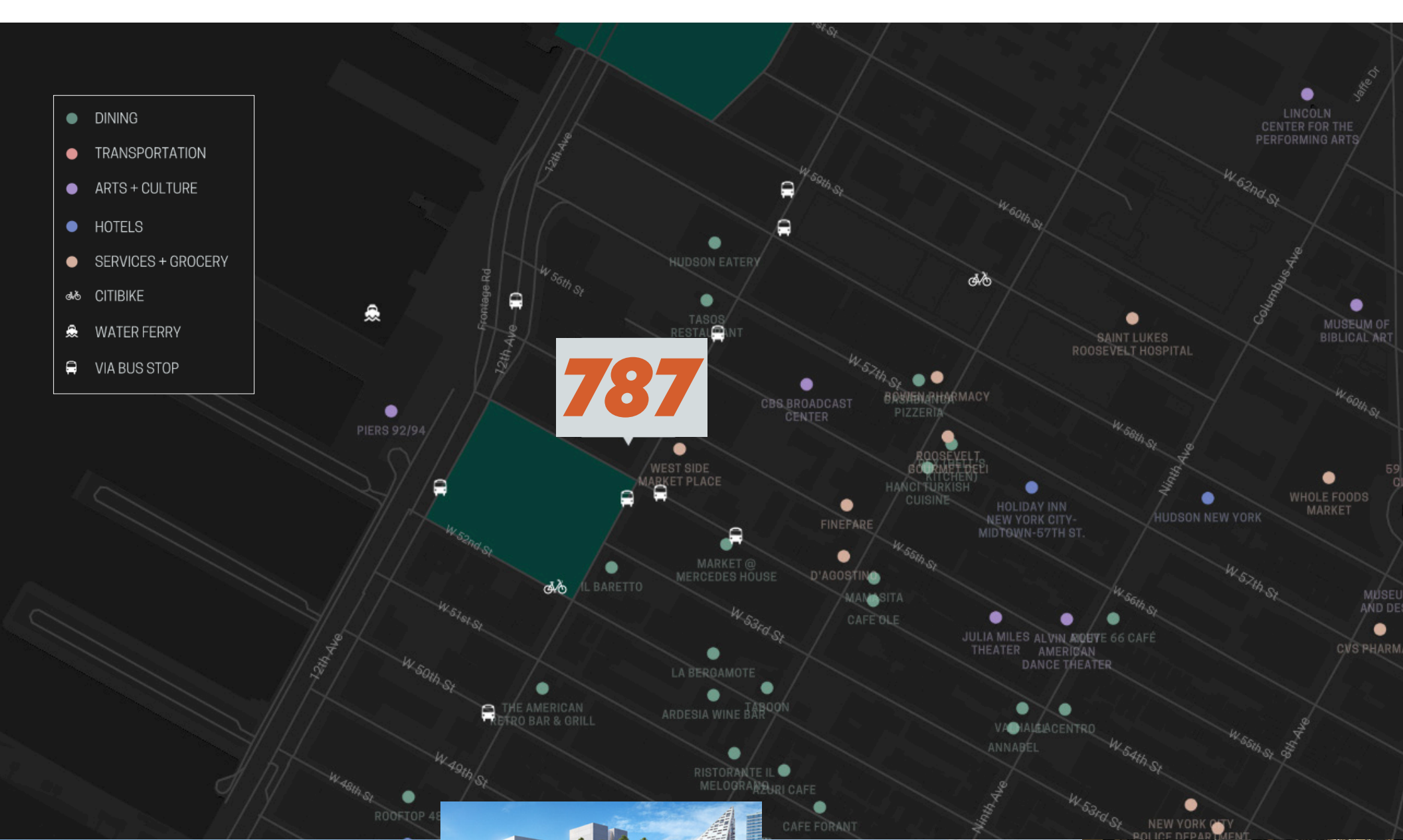
JUST TO THE SOUTH  
**MANHATTAN WEST / HUDSON YARDS**

**787** SEVENTH AVENUE  
IN THE MIDDLE OF IT ALL

JUST TO THE NORTH  
**3,241 NEW RESIDENTIAL UNITS**

- DINING
- TRANSPORTATION
- ARTS + CULTURE
- HOTELS
- SERVICES + GROCERY
- CITIBIKE
- WATER FERRY
- VIA BUS STOP

787



**Ground Floor**

20,000 SF

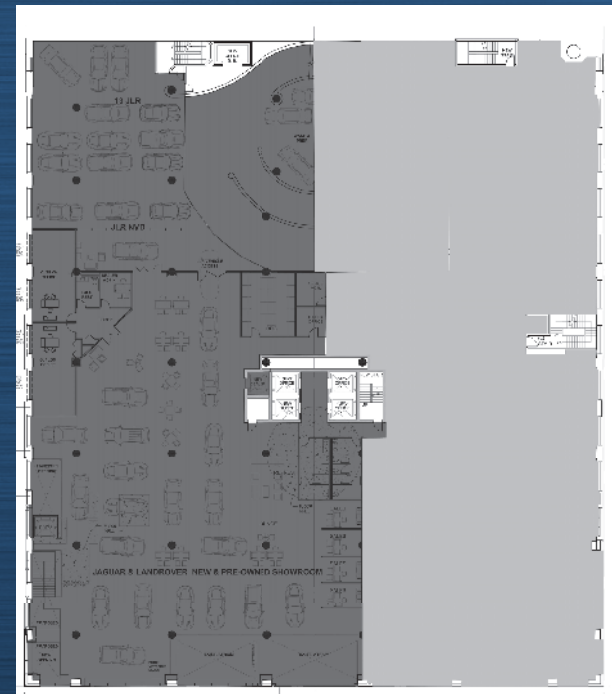
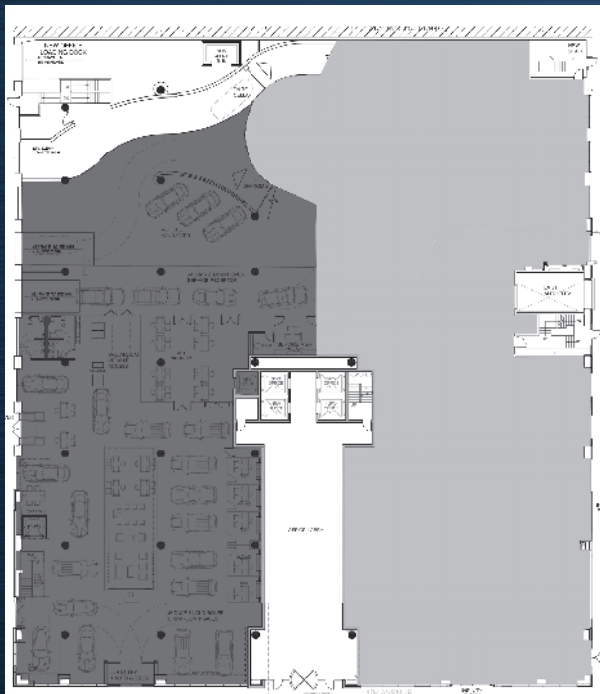
**Second Floor**

20,000 SF

**Third Floor**

40,000 SF

WEST 54TH STREET



WEST 55TH STREET

ELEVENTH AVENUE

## Contact Us

**MICHAEL KADOSH**

+1 212 984 7113  
michael.kadosh@cbre.com

**LON RUBACKIN**

+1 212 984 8195  
lon.rubackin@cbre.com

**BEVAN COHEN**

+1 212 895 0945  
bevan.cohen@cbre.com



# 787 ELEVENTH AVENUE

SOUTHWEST CORNER OF 55TH STREET & 11TH AVENUE

**CBRE**

© 2022 CBRE, Inc. All rights reserved. This information has been obtained from sources believed reliable, but has not been verified for accuracy or completeness. You should conduct a careful, independent investigation of the property and verify all information. Any reliance on this information is solely at your own risk. CBRE and the CBRE logo are service marks of CBRE, Inc. All other marks displayed on this document are the property of their respective owners, and the use of such logos does not imply any affiliation with or endorsement of CBRE.