

21 TURNPIKE ROAD

SOUTHBOROUGH, MA 01772

OFFERING SUMMARY

Property Type: Retail & Warehouse

Available SF: Retail - 1,208 SF
Warehouse - 7,500 SF

Lot Size: 3.15 Acres

Zoning: BH

Lease Rate: Negotiable

SITE SUMMARY

Kelleher & Sadowsky is pleased to present 21 Turnpike Road in Southborough as available for lease. This property is extremely well located along Route 9, with outstanding visibility. The property is located 1 mile away from I-90 and only 3.5 miles from I-495. The available retail space is 1,208 SF. The building also offers 7,500 SF of warehouse space. Signage opportunities are available on the building as well as the pylon sign located directly along Route 9. Call us today to schedule a tour.



JOE LAURSEN

Associate

laursen@kelleher-sadowsky.com

O: 508.841.6202

C: 508.353.9275

TODD ALEXANDER

Executive Vice President

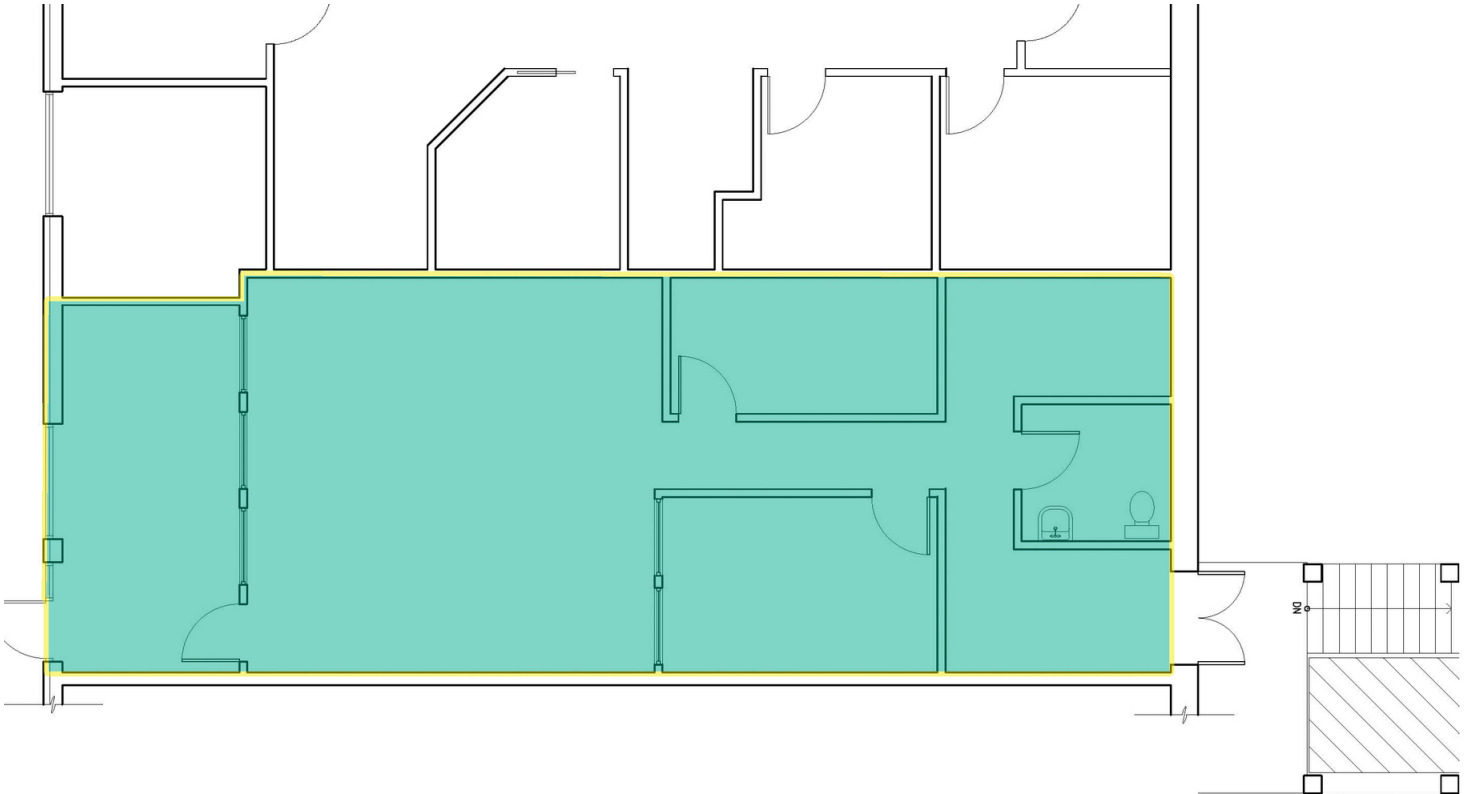
alexander@kelleher-sadowsky.com

O: 508.841.6201

C: 508.981.7014

FOR LEASE | 21-23 TURNPIKE ROAD

RETAIL SPACE FLOOR PLANS



1,208 SF | Retail Space



Voted Best Commercial Real Estate Brokerage - Worcester Business Journal

120 Front Street, Suite 210 | Worcester, MA 01608 | 508.755.0707 | kelleher-sadowsky.com

JOE LAURSEN

Associate

laursen@kelleher-sadowsky.com

O: 508.841.6202

C: 508.353.9275

TODD ALEXANDER

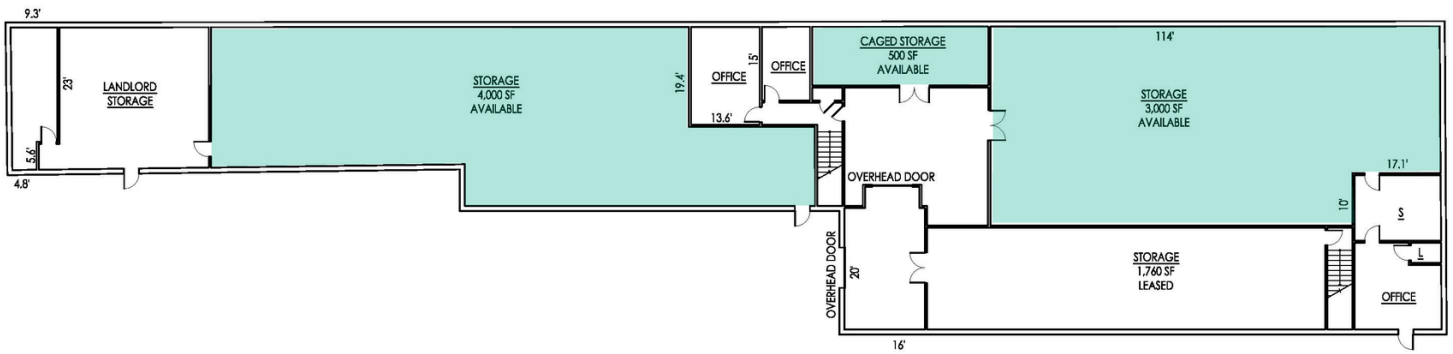
Executive Vice President

alexander@kelleher-sadowsky.com

O: 508.841.6201

C: 508.981.7014

WAREHOUSE FLOOR PLAN



LEASE PLAN
SCALE: 1" = 20'-0"

7,500 SF | Warehouse Space



Voted Best Commercial Real Estate Brokerage - Worcester Business Journal
120 Front Street, Suite 210 | Worcester, MA 01608 | 508.755.0707 | kelleher-sadowsky.com

JOE LAURSEN

Associate

laursen@kelleher-sadowsky.com

O: 508.841.6202

C: 508.353.9275

TODD ALEXANDER

Executive Vice President

alexander@kelleher-sadowsky.com

O: 508.841.6201

C: 508.981.7014

FOR LEASE | 21-23 TURNPIKE ROAD

ADDITIONAL PHOTOS



JOE LAURSEN

Associate

laursen@kelleher-sadowsky.com

O: 508.841.6202

C: 508.353.9275

TODD ALEXANDER

Executive Vice President

alexander@kelleher-sadowsky.com

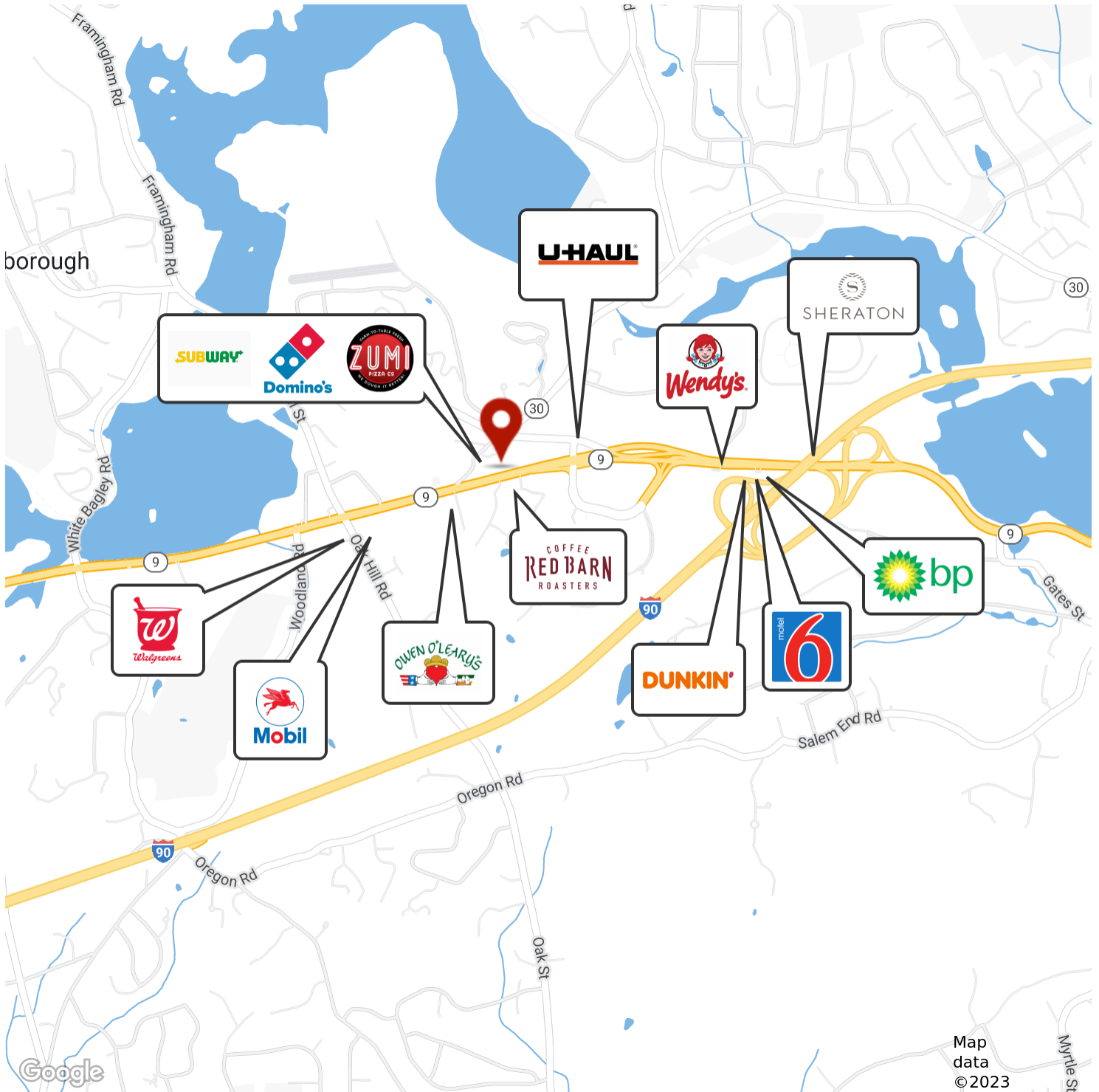
O: 508.841.6201

C: 508.981.7014



Voted Best Commercial Real Estate Brokerage - Worcester Business Journal
120 Front Street, Suite 210 | Worcester, MA 01608 | 508.755.0707 | kelleher-sadowsky.com

LOCATION MAP



Voted Best Commercial Real Estate Brokerage - Worcester Business Journal
120 Front Street, Suite 210 | Worcester, MA 01608 | 508.755.0707 | kelleher-sadowsky.com

JOE LAURSEN

Associate
laursen@kelleher-sadowsky.com
O: 508.841.6202
C: 508.353.9275

TODD ALEXANDER

Executive Vice President
alexander@kelleher-sadowsky.com
O: 508.841.6201
C: 508.981.7014