



100 SE 5th ST

100 SE 5th St Abilene, Kansas 67410

Property Highlights

- **Adaptable Space:** This property allows for customizable layouts, making it suitable for a wide range of business ventures.
- **Multi-Kitchen Potential:** Divisible kitchen areas available within the space.
- **Strategic & Historical Location:** Situated feet from Eisenhower's homestead, Presidential Museum, Library, & Old Abilene Town.
- **Flexible Landlord:** The landlord is open to creative uses and tenant improvements. Seller financing options are available.

Sale Price:	\$350,000
Lease Rate:	\$15.00 SF/yr (Gross)
Building Size:	10,240 SF
Available SF:	500 - 10,240 SF
Lot Size:	39,204 SF

For More Information

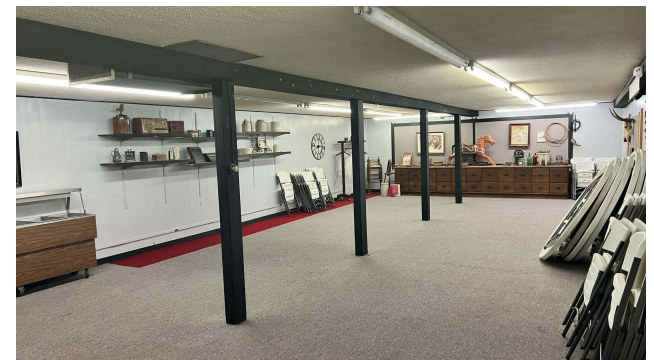
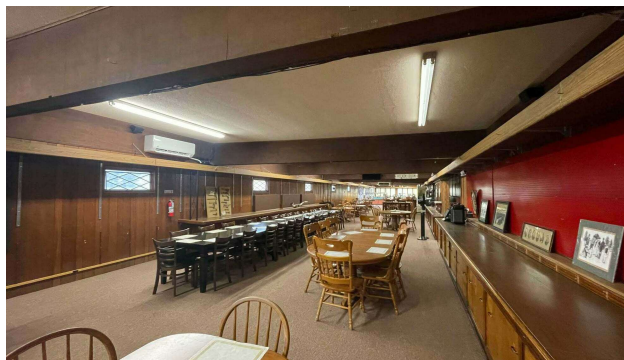
Brogan Klein

O: 316 352 7315
Bklein@naimartens.com

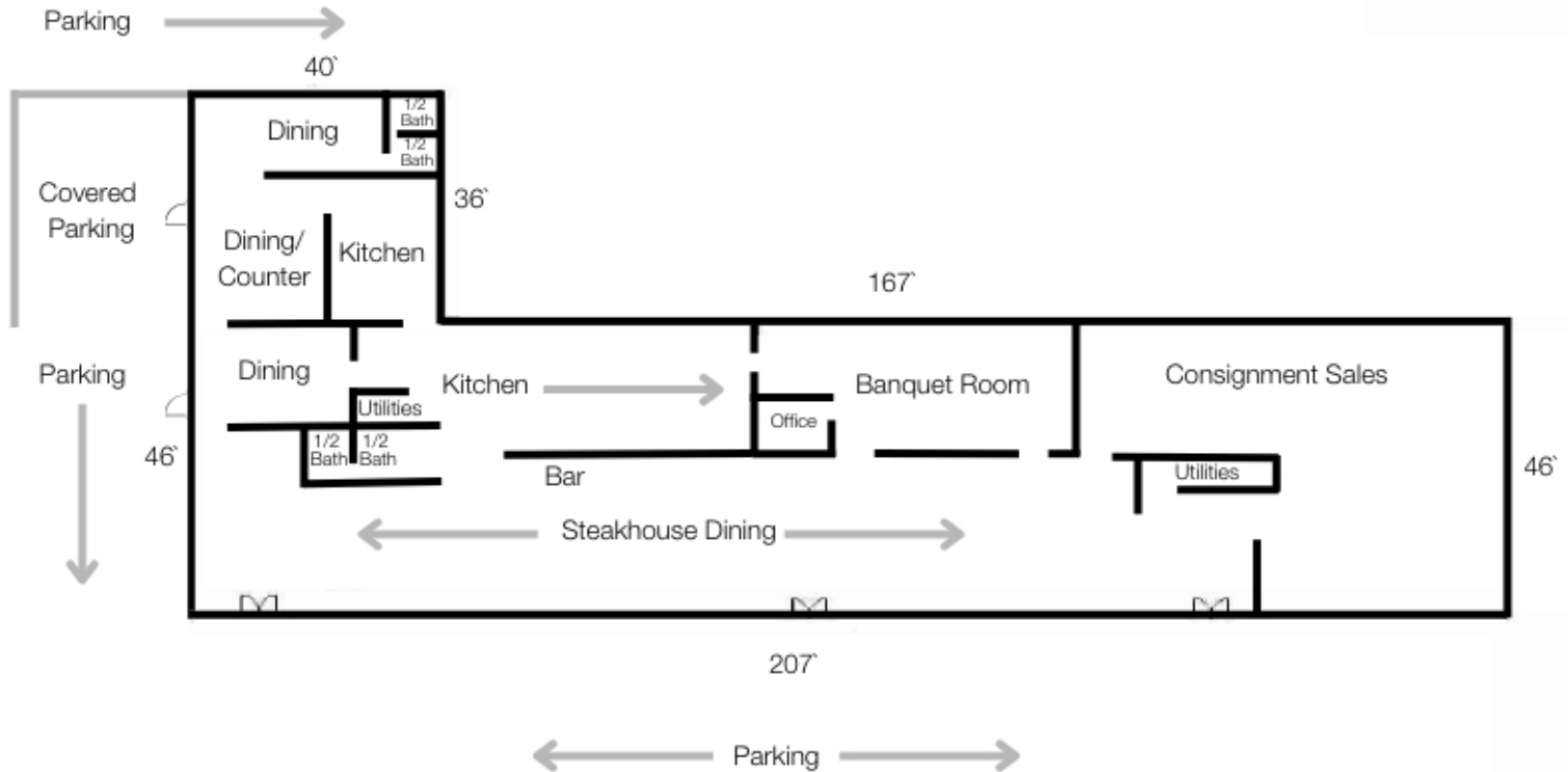
Brandy Urusquieta

O: 210 831 1792
Brandy@naimartens.com

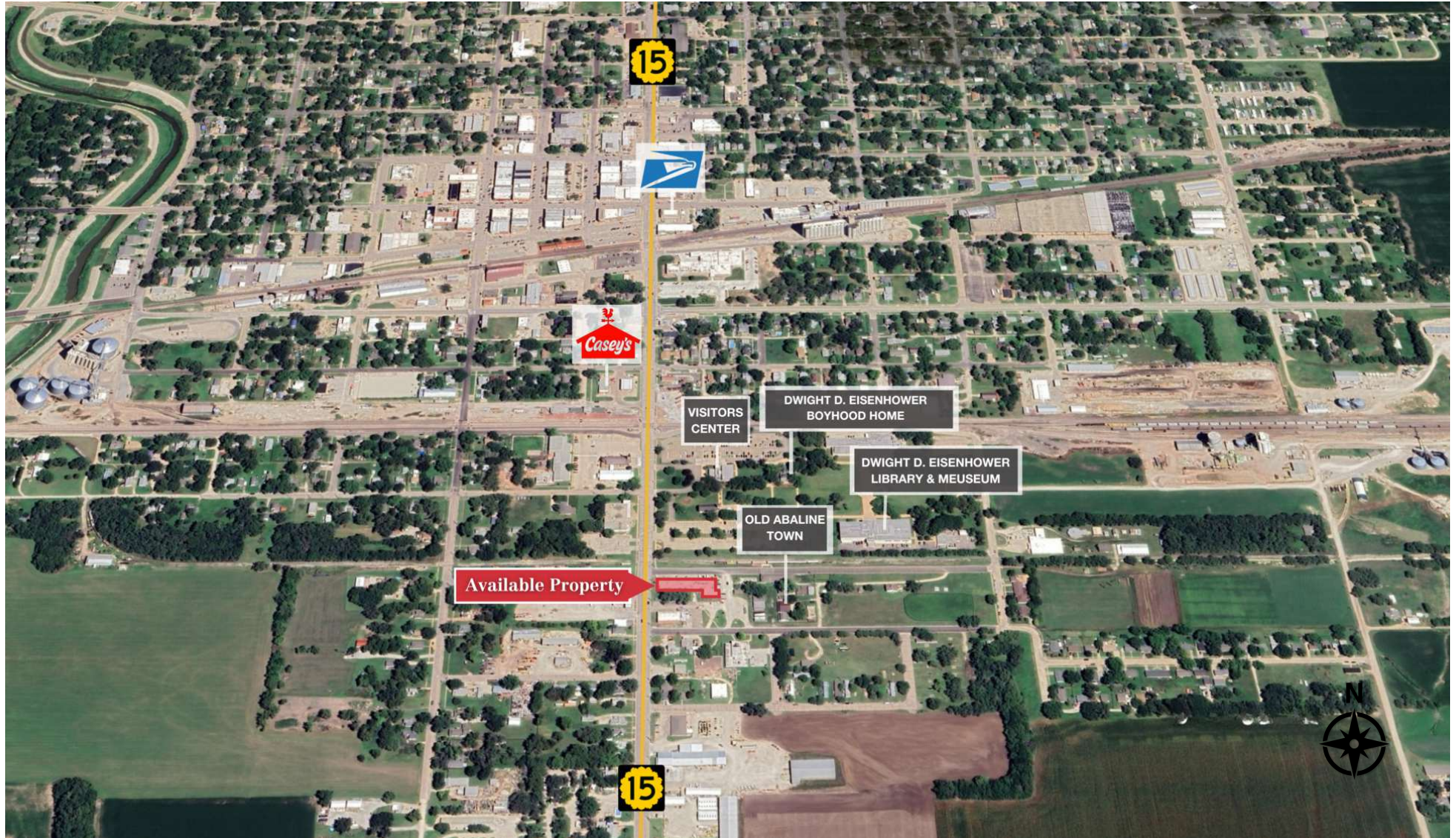
For Sale & Lease
500 - 10,240 SF | \$350,000
Retail Space



100 SE 5th St Abilene, KS 67410



For Sale & Lease
500 - 10,240 SF | \$350,000
Retail Space



| 100 SE 5th St Abilene, KS 67410