

613
ABBOTT

FOR LEASE



DETROIT CBD, MICHIGAN

613 Abbott Street

NEWMARK

 TIME EQUITIES INC.

Building Overview

613 ABBOTT

ASKING RATE:
\$24.00/SF Gross +
Electric

YEAR BUILT:
1989

BUILDING HEIGHT:
6 stories (tower)

TOTAL BUILDING AREA:
80,163 SF

PARKING:
On-sight parking
opportunities and ability to
secure up to 4/1000 RSF
within 1-2 blocks of building.

613 Abbott St.

- Time Equities recently renovated the lobby and common areas
- Building ideal for law firms, insurance and non-profit companies
- Full floor available up to 13,594 RSF & Building signage
- Building offers amphitheater, cafeteria, and conference room
- Generous window lines
- Furniture available
- Wifi in common areas
- Easy accessibility to M-10 and I-75
- Grab & Go Market and Fitness Center under construction

Available Space

THIRD FLOOR	up to 13,594 RSF
SUITE 450	1,100 RSF
SUITE 640	2,870 RSF
SUITE 650	1,654 RSF

Property Summary

Located in Detroit’s revitalized CBD, 613 Abbott and 1240 Third Avenue feature a collective 87,000+ square feet between the two buildings. Amenities include large conference facilities, skylight atrium, food service, on-site security, and excellent signage opportunities. Additionally, the location offers convenient access to area freeways and walkable attractions such as MGM Grand Casino, Corktown, Campus Martius, the Riverwalk, and the Arena and Financial Districts. All of these attributes combined with ample downtown parking, make this well-maintained property a desirable Detroit location.



DETROIT CBD
LOCATION



CONVENIENT
M-10 AND I-75
ACCESS



SIGNAGE
OPPORTUNITY



FITNESS
CENTER



72 PARKING
SPACES



LARGE CONFERENCE
FACILITY / AMPHITHEATER



FOOD SERVICE
AREA

📍 613 Abbott Street



613 Abbott St.



LOBBY



AMPHITHEATER



GRAB & GO MARKET UNDER CONSTRUCTION



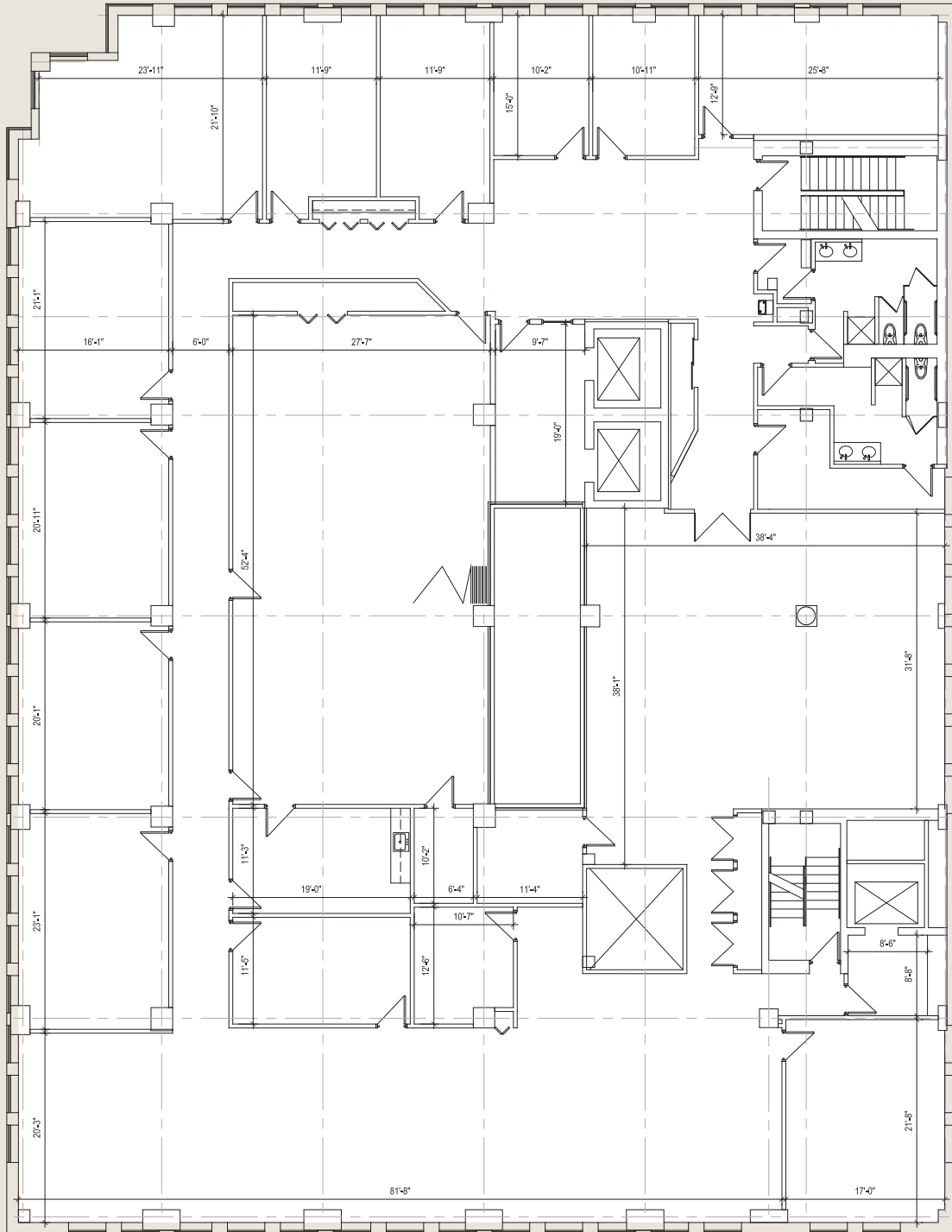
GRAB & GO MARKET UNDER CONSTRUCTION

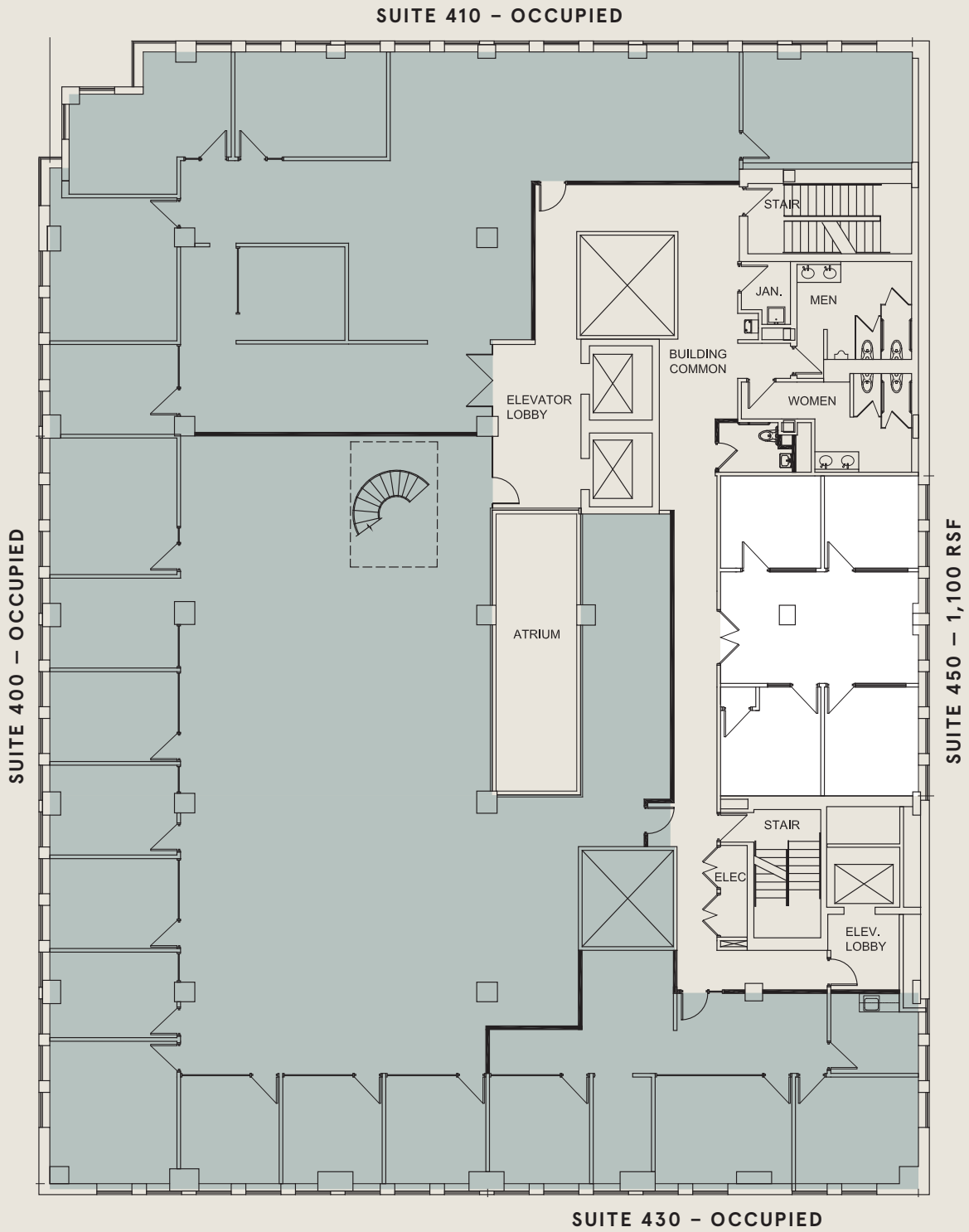


613 Abbott St.

613 Abbott St. Third Floor

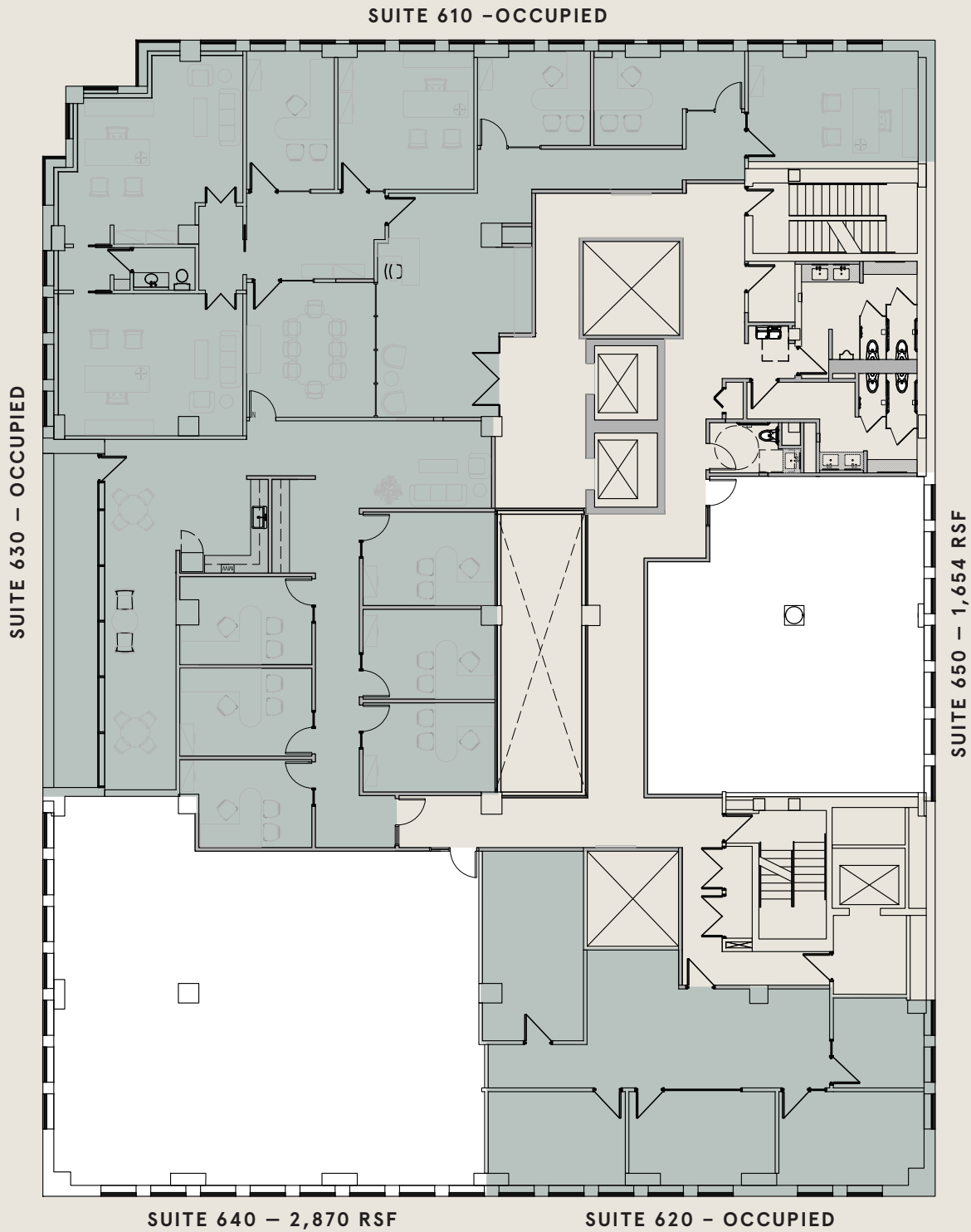
Full Floor Available – UP TO 13,594 RSF





**613 Abbott St.
Sixth Floor / Proposed Demising Plan**

1,654 – 2,870 RSF Available



Area Overview



Points of Interest

- ★ 613 Abbott Street
- 1 COBO Center
- 2 Hart Plaza
- 3 Renaissance Center
- 4 Riverwalk
- 5 Campus Martius
- 6 Greektown
- 7 Greektown Casino
- 8 Ford Field
- 9 Comerica Park
- 10 Little Caesars Arena
- 11 Fox Theater
- 12 The Filmore
- 13 MGM Casino

Developments

- A The District Detroit
- B Hudson Development
- C Monroe Blocks
- D Michigan Central Train Station/Future Ford HQ



Larry Emmons

Senior Managing Director
+1 248 447 2707
larry.emmons@nmrk.com

JP Champine

Managing Director
+1 248 357 6596
jp.champine@nmrk.com

Newmark
27725 Stansbury, Suite 300
Farmington Hills MI 48334
+1 248 350 9500

nmrk.com

NEWMARK

 **TIME EQUITIES INC.**