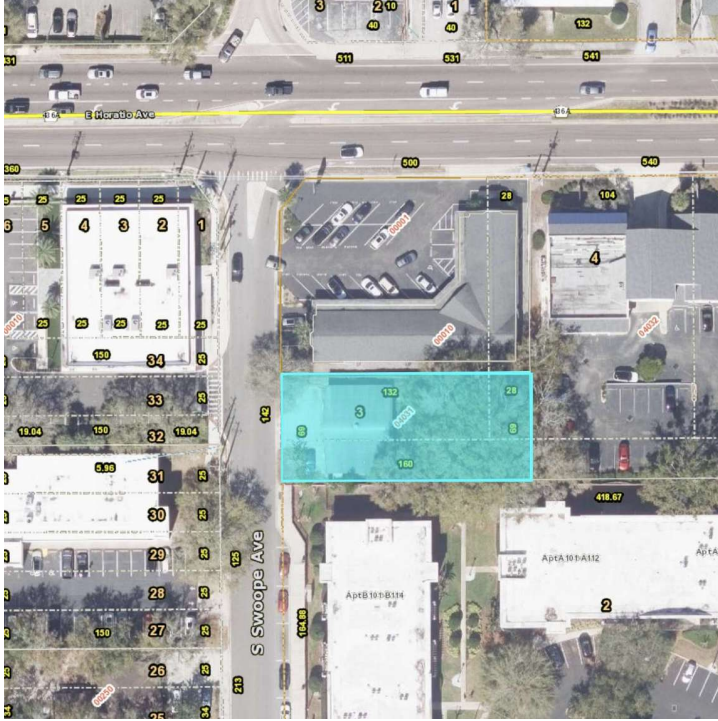


Downtown Maitland Land



OFFERING SUMMARY

Sale Price:	Negotiable
Lot Size:	0.25 Acres

PROPERTY OVERVIEW

Rare Maitland land for sale
Downtown prime core location in a highly sought-after market
New developments underway along Horatio
Approx 1,000 brand new multi-fam recently built nearby
Easy access to 17/92, Maitland Blvd, and I-4
Close to Maitland SunRail Station
Strong demos - HH income \$173K

PROPERTY HIGHLIGHTS

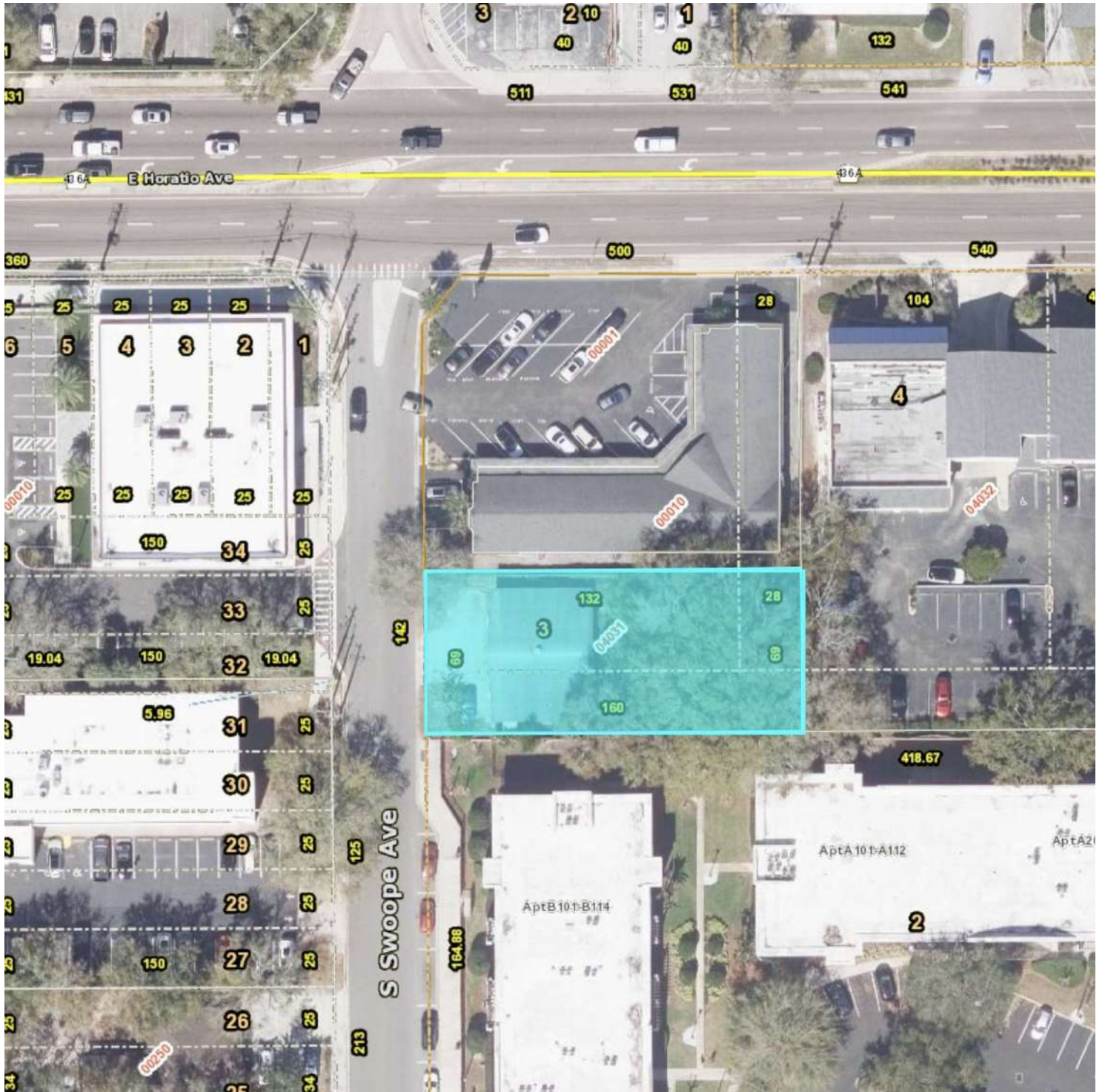
- Site is cleared and ready to build
- Downtown Maitland Zoning (MTL-DM)
- Uses: office, retail, and multi-fam
- Higher Density of .60 FAR is encouraged by City
- Utilities to site
- New survey and clean enviro (2024)

LEE ZERIVITZ, SIOR, CCIM
Managing Partner
407.644.CITY
lee@citycommercial.com

CITY COMMERCIAL
1101 Symonds Ave.
Winter Park, FL 32789
CITYCommercial.com



Aerial

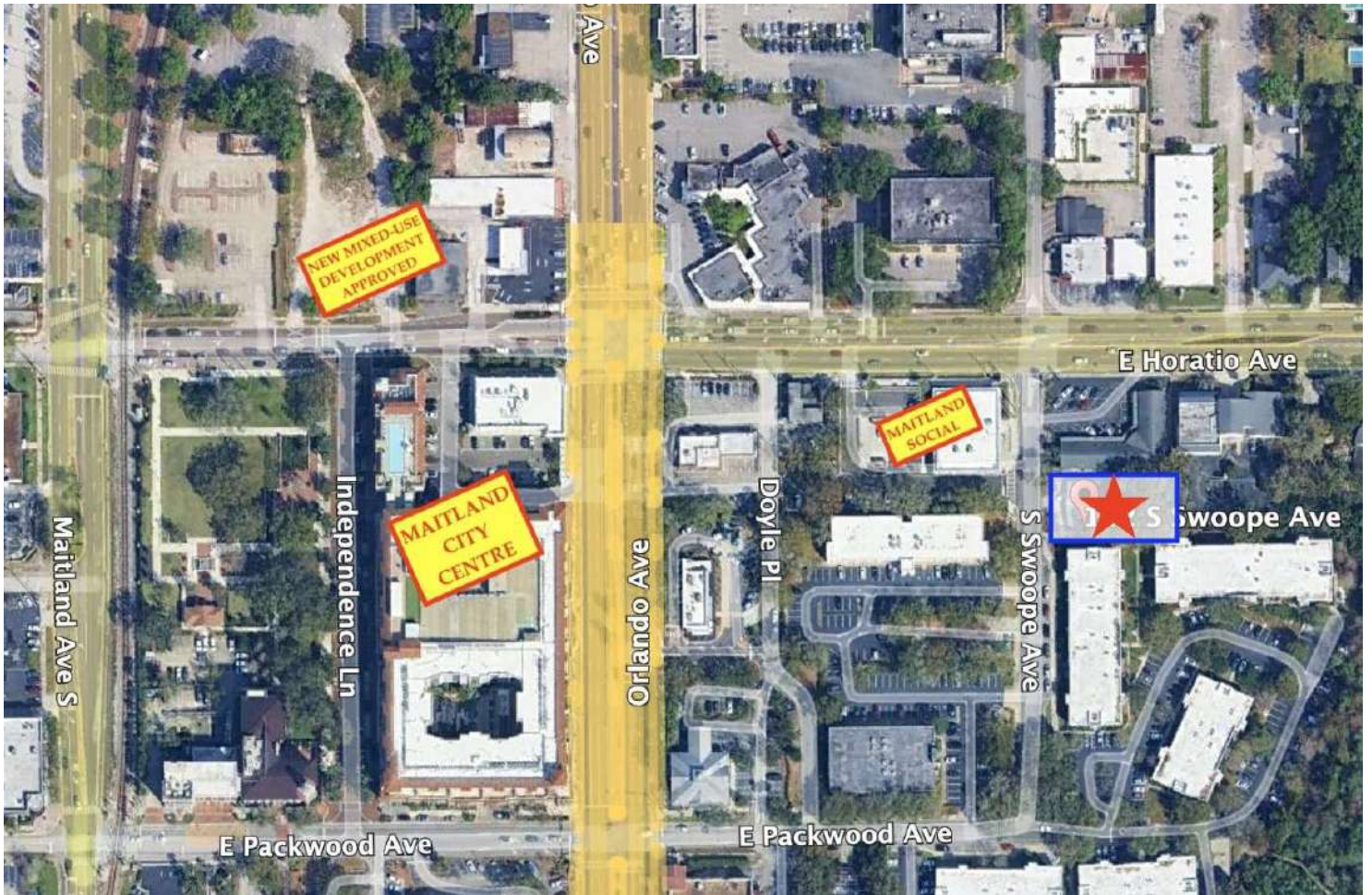


LEE ZERIVITZ, SIOR, CCIM
Managing Partner
407.644.CITY
lee@citycommercial.com

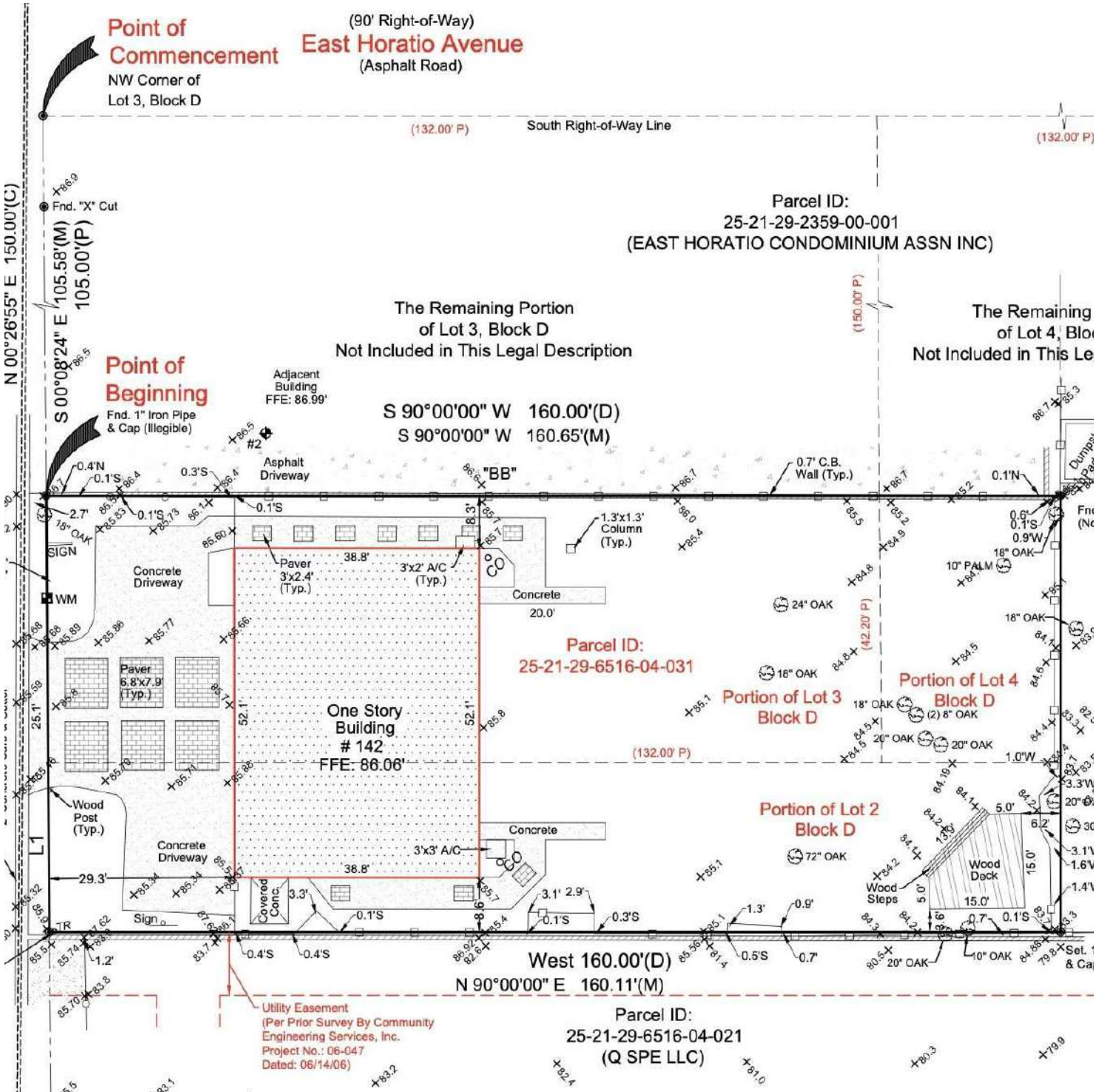
CITY COMMERCIAL
1101 Symonds Ave.
Winter Park, FL 32789
CITYCommercial.com



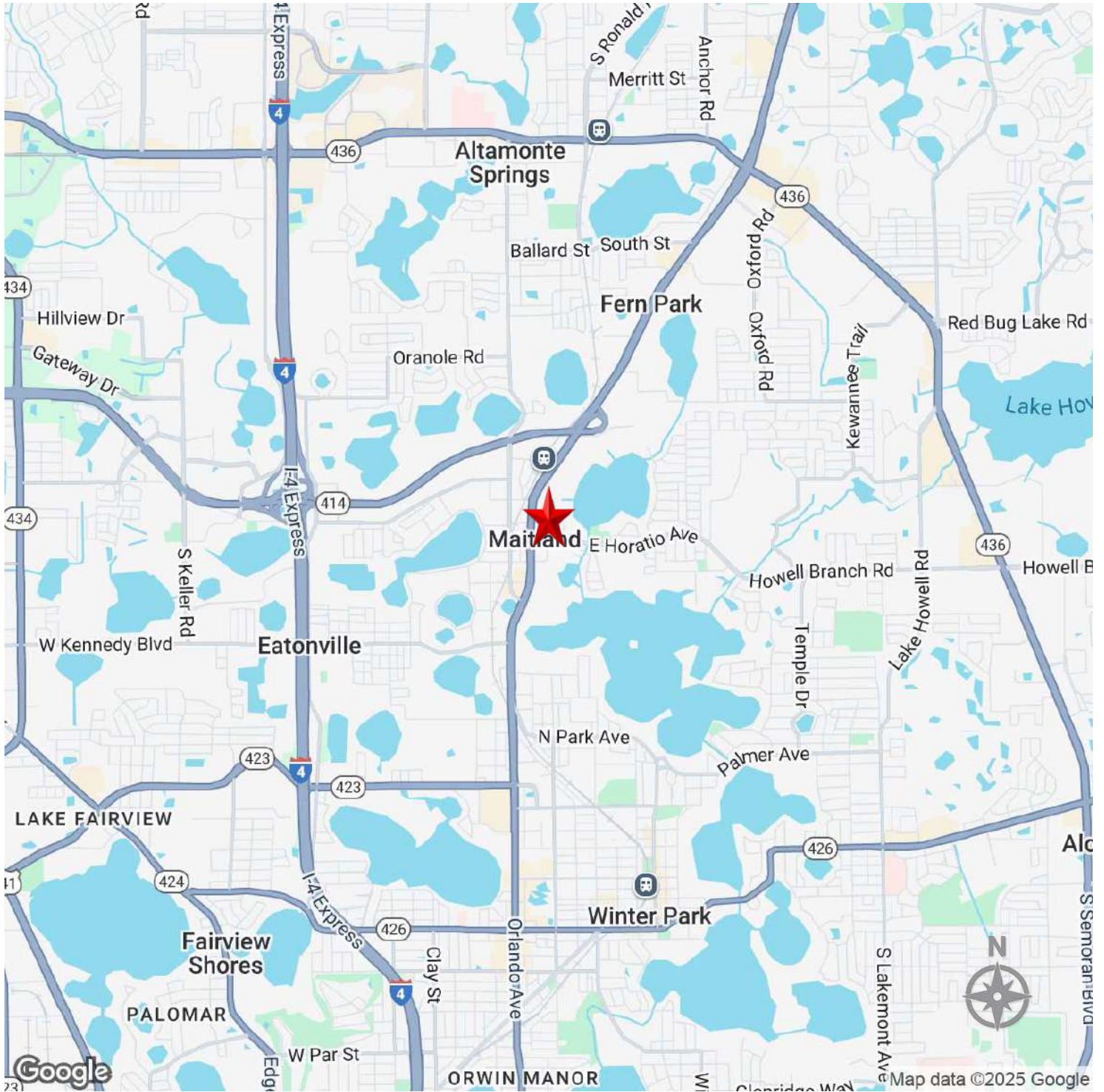
Location Map



Survey



Map



LEE ZERIVITZ, SIOR, CCIM
Managing Partner
407.644.CITY
lee@citycommercial.com

CITY COMMERCIAL
1101 Symonds Ave.
Winter Park, FL 32789
CITYCommercial.com

