

Horizon Ridge Business Park

2780-2790 W. Horizon Ridge Pkwy, Henderson, NV 89052



Medical/Office Space For Lease

OFIR BEN-MOSHE

+1 (702) 471-1118

OFIR@MYDCOMPANIES.COM

B.1002540.LLC

MYD REAL
ESTATE

2780-2790 W HORIZON RIDGE

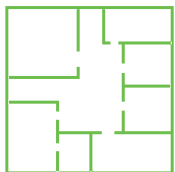


OFFERING SUMMARY

Medical / Office / "Medtail" For Lease

Available Space

±2,242 SF (Suite 40)



Lease Rate

Contact Broker



Location

Henderson Submarket





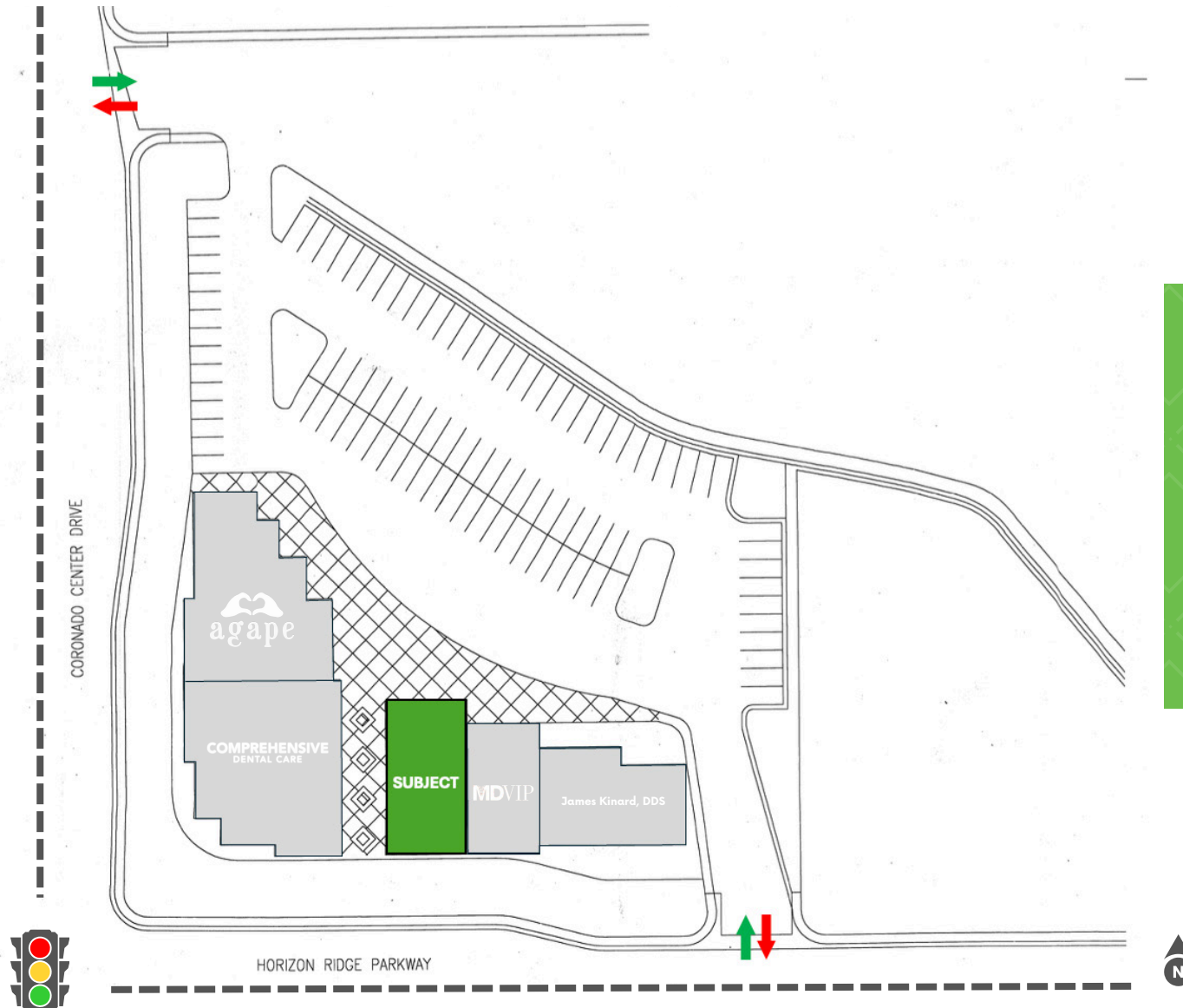
PROEPRTY HIGHLIGHTS

- **Meticulously managed** professional business park situated within **Henderson’s medical district**.
- **Rare tenancy opportunity** within an established & frequently visited office park.
- Located at the **signalized intersection of W Horizon Ridge and Coronado Center Drive** providing excellent frontage & visibility.

KEY DEMOGRAPHICS

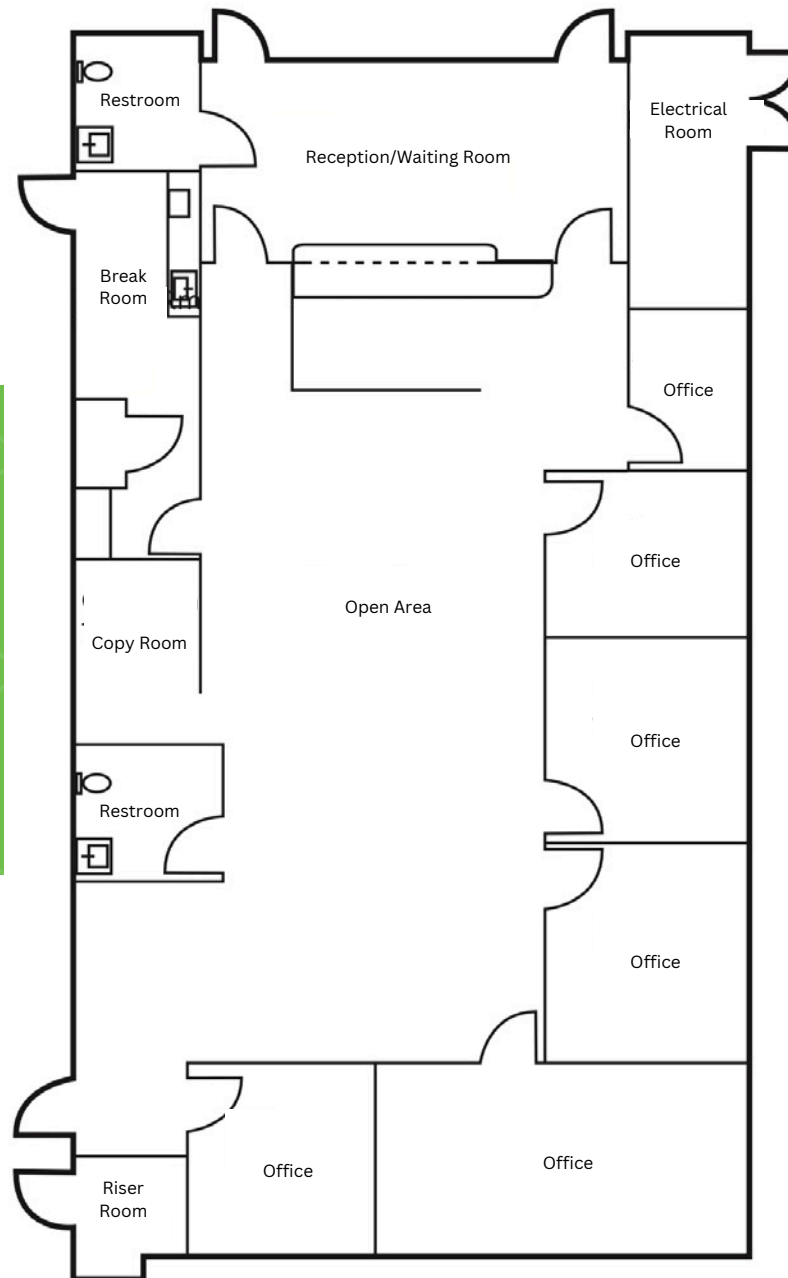
	1-mile	3-miles	5-miles
2023 Population	23,437	136,240	307,103
2023 AHHI	\$106,475	\$105,367	\$104,854
2023 Households	9,406	53,736	121,640

SITE PLAN



The information contained herein was obtained from sources deemed reliable; however, MYD Real Estate does not make any representation to the accuracy or correctness thereof. Prospective buyers or tenants are required to conduct their own due diligence and verification.

FLOOR PLAN



Improvements:

- 2 Restrooms
- Reception/Waiting Room
- 6 Private Rooms + Break Room
- Additional Private Entries

SUITE 40
±2,242 SF
(End-Cap Unit)

*Not to scale - For illustration purposes

AREA MAP



PROPERTY PHOTOS



Eastern Commons Medical Offices

2780-2790 W. Horizon Ridge Pkwy, Henderson, NV 89052



Medical/Office Space For Lease

OFIR BEN-MOSHE

+1 (702) 471-1118

OFIR@MYDCOMPANIES.COM

B.1002540.LLC

Exclusively Listed By:

MYD REAL ESTATE