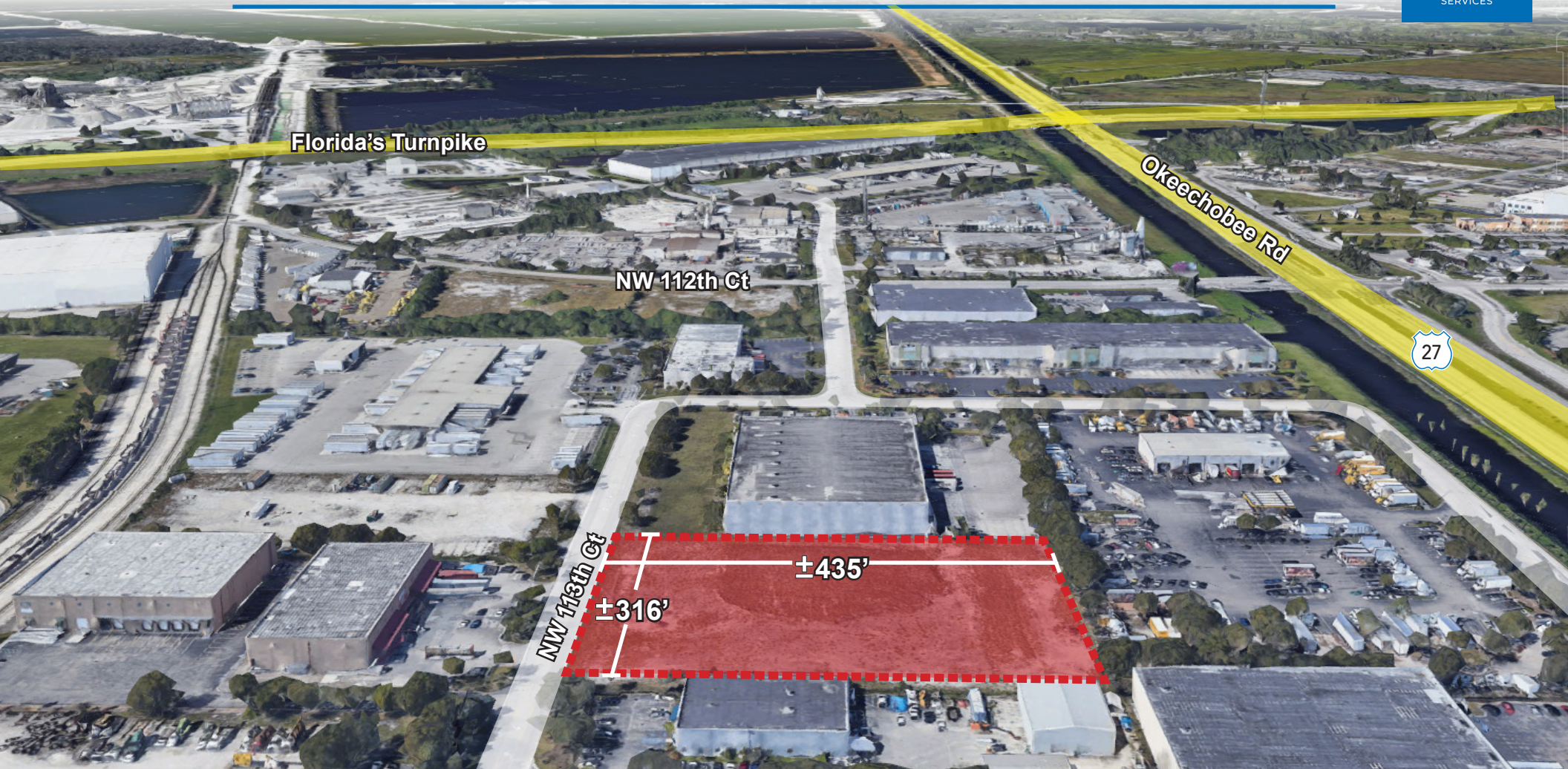


LAND FOR LEASE - ±3.16 ACRES TOTAL

ADJACENT TO TURNPIKE & OKEECHOBEE RD

TRANSWESTERN
REAL ESTATE
SERVICES



IMMEDIATE ACCESS TO
FLORIDA'S TURNPIKE VIA OKEECHOBEE RD.

LANDLORD CAN DELIVER
PAVED, FENCED, DRAINED AND LIT

TOTAL
±3.16 ACRES

ZONED
M-1

NW 131ST ST & NW 113RD CT | MEDLEY, FL 33166

LOCATION AND SPACE DETAILS



FOR MORE INFORMATION, CONTACT

BEN EISENBERG
EXECUTIVE MANAGING DIRECTOR
305.808.7826
ben.eisenberg@transwestern.com

CARLOS GAVIRIA
VICE PRESIDENT
305.808.7313
carlos.gaviria@transwestern.com

WALTER BYRD
EXECUTIVE MANAGING DIRECTOR
305.808.7825
walter.byrd@transwestern.com

THOMAS KRESSE
MANAGING DIRECTOR
305.808.7827
thomas.kresse@transwestern.com



Transwestern Commercial Services Florida, LLC | 100 SE 2nd Street | Suite 3100 | Miami, FL 33131

The information provided herein was obtained from sources believed reliable; however, Transwestern makes no guarantees, warranties or representations as to the completeness or accuracy thereof. The presentation of this property is submitted subject to errors, omissions, change of price or conditions, prior sale or lease, or withdrawal without notice. Copyright © 2022 Transwestern Licensed Real Estate Broker.

www.SFLindustrial.com