

PROJECT:

**Lumberton
Speculative
Warehouse / Office
(152,640 s.f.)**

1807 NJSH Route 38 Block
23, Lot 4.01, 4.02, & 5
Lumberton, NJ
08085

REVISIONS:

10/31/22	PRELIMINARY REVIEW
12/06/22	PLANNING BOARD SUBMISSION
03/10/22	PLANNING BOARD SUBMISSION

SHEET TITLE:

**OVERALL
FLOOR PLAN**

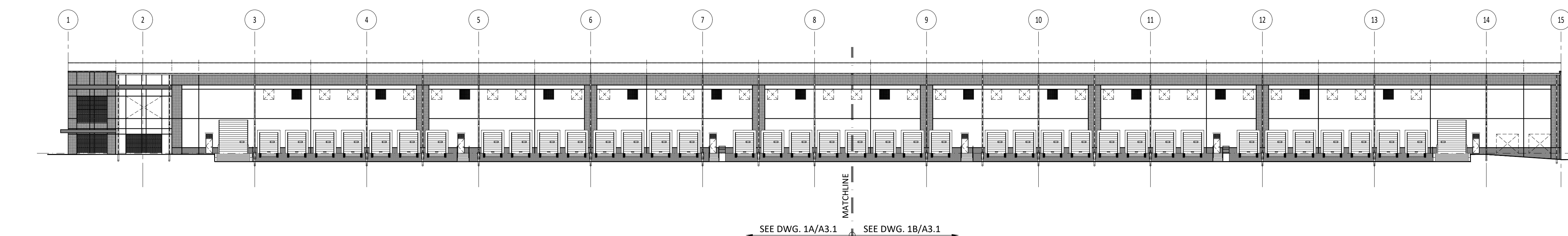
DRAWN BY: idp
CHECKED BY: PAR
SCALE:
DATE: 10/31/22
PROJECT NUMBER: C22021
DRAWING NUMBER:

A1.1

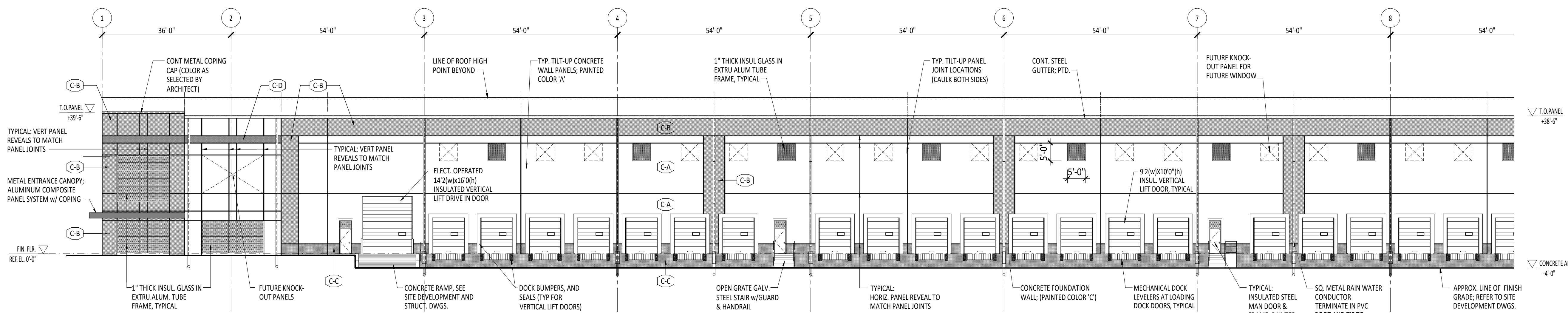
ALL CONSTRUCTION SHALL BE IN ACCORDANCE WITH THE
NEW JERSEY UNIFORM CONSTRUCTION CODE INCLUDING
ADOPTED SUPPLEMENTS AND ALL APPLICABLE LOCAL CODES

1 OVERALL FLOOR PLAN
1"=30'-0"
Plan N.

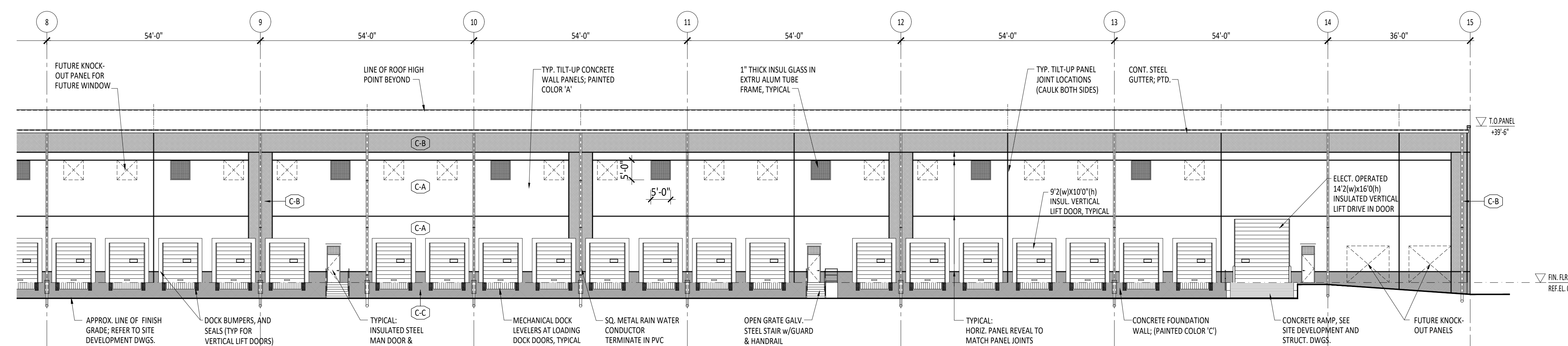
- SYMBOLS**
- ▲ DOCK HIGH TRUCK DOOR
 - DRIVE IN GRADE LEVEL TRUCK DOOR
 - ↑ MEANS OF EGRESS



1 OVERALL EAST ELEVATION
1/32" = 1'-0"



1A PARTIAL EAST ELEVATION
1/16" = 1'-0"



1B PARTIAL EAST ELEVATION
1/16" = 1'-0"

TILT UP CONCRETE WALL PANEL NOTES:
1. PANEL DIMENSIONS ARE NOMINAL DIMENSIONS TAKEN TO CENTERLINE OF JOINT, COORDINATE ACTUAL SIZE OF PANEL AND PANEL JOINTS.
2. HORIZONTAL PANEL REVEAL DIMENSIONS ARE TO TOP OF HORIZONTAL REVEALS, U.N.O.
3. PAINT ALL EXTERIOR CONCRETE WALL PANEL SURFACES WITH A "SMOOTH" TEXTURE ACRYLIC COATING AS MFGD. BY SHERWIN-WILLIAMS, CONFLX XL PRODUCT AS SELECTED BY OWNER/ARCHITECT IN STRICT ACCORDANCE WITH MANUFACTURERS RECOMMENDATIONS. SHADING ON ELEVATIONS IS SHOWN FOR DRAWING CLARITY ONLY. ACTUAL PAINT COLORS AS SHOWN (CONFIRM W/OWNER)

4. PROVIDE PAINTABLE SEALANT AT ALL PANEL JOINTS (INTERIOR AND EXTERIOR)
5. PROVIDE BACKER ROD AND SEALANT CONTINUOUS AROUND ALL ALUMINUM FRAMING AND HOLLOW METAL
- (CA) BASE COLOR: NEBULUS WHITE (SW 7063)
 - (CB) SECONDARY COLOR: GRAY MATTERS (SW 7066)
 - (CC) WATERTABLE COLOR: CITY SCAPE (SW 7067)
 - (CD) BLUE ACCENT COLOR: GEORGIAN BAY (SW 6509)

PROJECT:

**Lumberton
Speculative
Warehouse / Office
(152,640 s.f.)**

1807 NJSH Route 38 Block
23, Lot 4.01, 4.02, & 5
Lumberton, NJ
08085

REVISIONS:

10/31/22 PRELIMINARY REVIEW
12/06/22 PLANNING BOARD SUBMISSION
03/10/22 PLANNING BOARD SUBMISSION

SHEET TITLE:

**BUILDING
ELEVATIONS**

DRAWN BY: idp

CHECKED BY: PAR

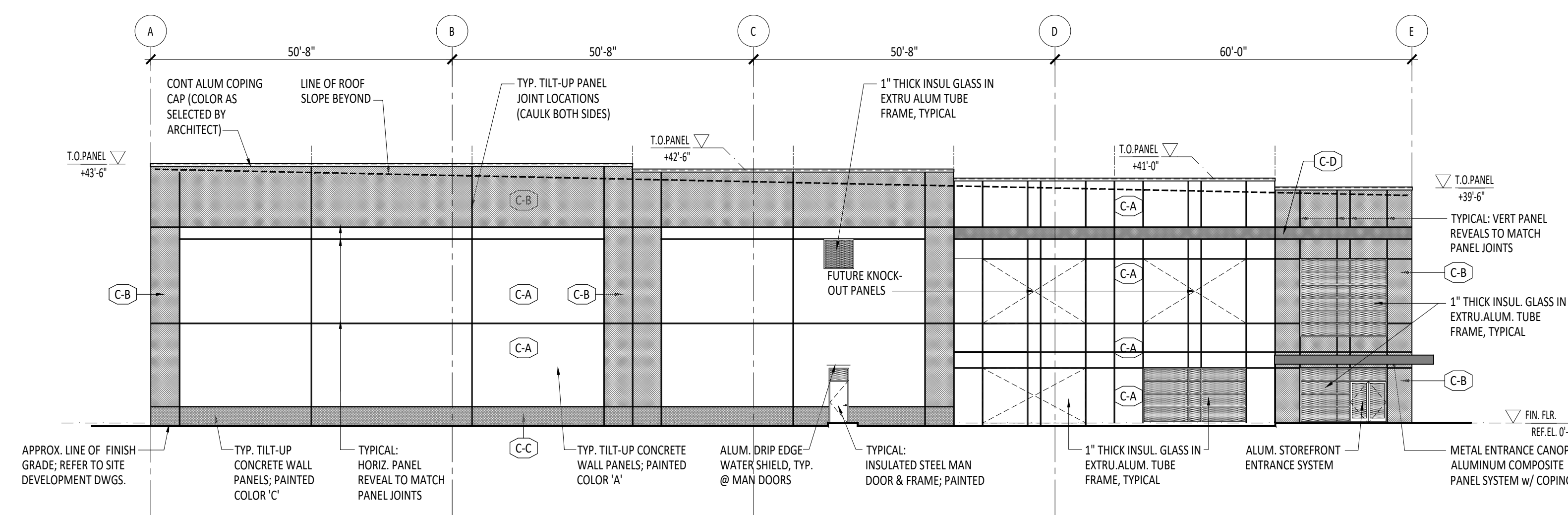
SCALE:

DATE: 10/31/22

PROJECT NUMBER: C22021

DRAWING NUMBER:

2 OVERALL SOUTH ELEVATION
1/16" = 1'-0"



Philip A. Ruggieri
PHILIP A. RUGGIERI R.A.
CONSULTANT

CLIENT:



PROJECT:

**Lumberton
Speculative
Warehouse / Office
(152,640 s.f.)**

1807 NJSH Route 38 Block
23, Lot 4.01, 4.02, & 5
Lumberton, NJ
08085

REVISIONS:
10/31/22 PRELIMINARY REVIEW
12/06/22 PLANNING BOARD SUBMISSION
03/10/22 PLANNING BOARD SUBMISSION

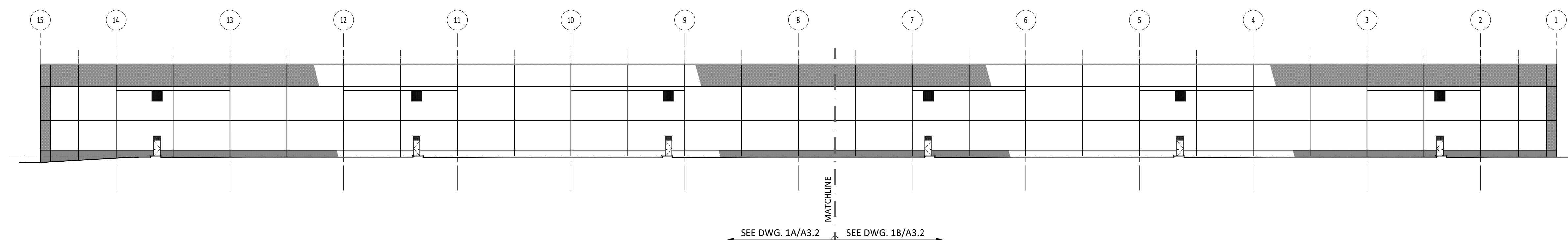
SHEET TITLE:

**BUILDING
ELEVATIONS**

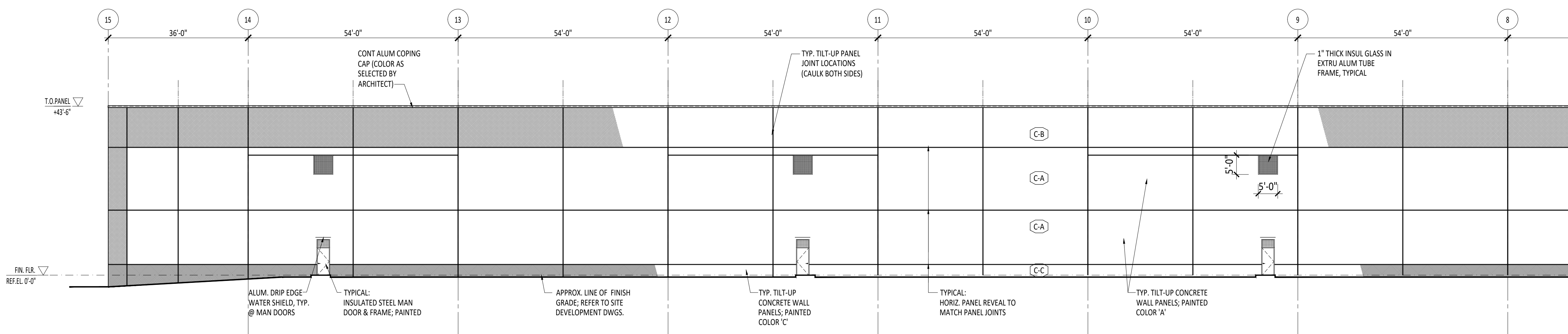
DRAWN BY: idp
CHECKED BY: PAR
SCALE:
DATE: 10/31/22
PROJECT NUMBER: C22021

DRAWING NUMBER:

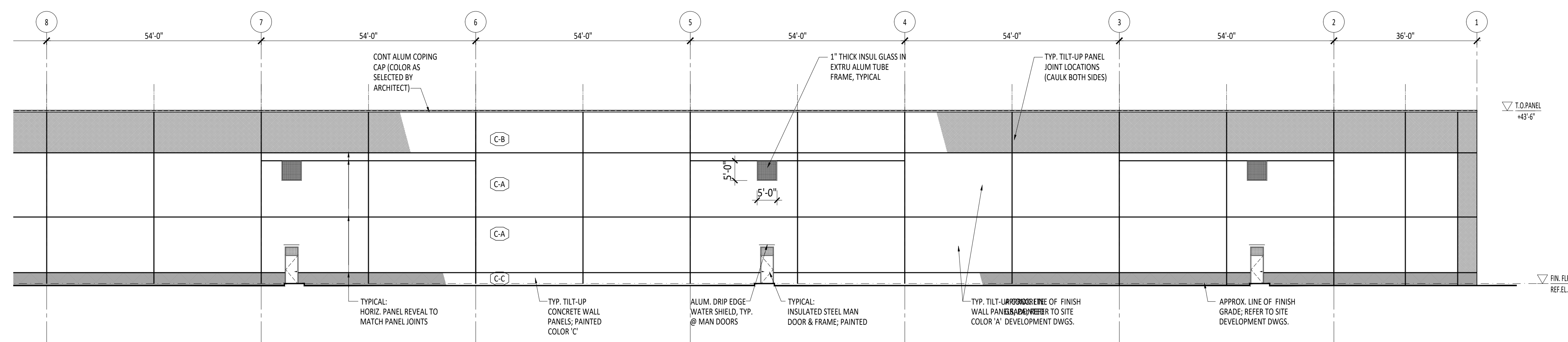
A3.2



1 OVERALL WEST ELEVATION
1/30" = 1'-0"



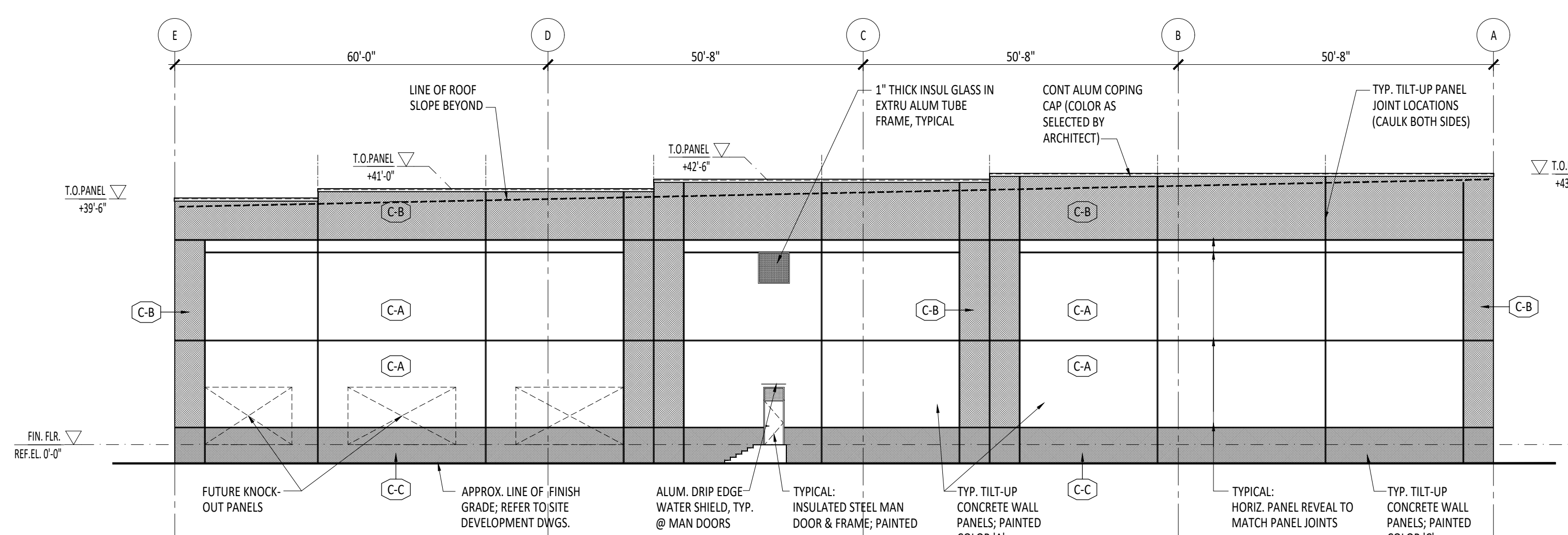
1A PARTIAL WEST ELEVATION
1/16" = 1'-0"



1B PARTIAL WEST ELEVATION
1/16" = 1'-0"

TILT-UP CONCRETE WALL PANEL NOTES:
1. PANEL DIMENSIONS ARE NOMINAL DIMENSIONS TAKEN TO CENTERLINE OF JOINT, COORDINATE ACTUAL SIZE OF PANEL AND PANEL JOINTS.
2. HORIZONTAL PANEL REVEAL DIMENSIONS ARE TO TOP OF HORIZONTAL REVEALS, U.N.O.
3. PAINT ALL EXTERIOR CONCRETE WALL PANEL SURFACES WITH A "SMOOTH" TEXTURE ACRYLIC COATING AS MFG'RD BY SHERWIN-WILLIAMS, CONPLEX XL PRODUCT AS SELECTED BY OWNER/ARCHITECT IN STRICT ACCORDANCE WITH MANUFACTURERS RECOMMENDATIONS. SHADING ON ELEVATIONS IS SHOWN FOR DRAWING CLARITY ONLY, ACTUAL PAINT COLORS AS SHOWN (CONFIRM W/OWNER)

4. PROVIDE PAINTABLE SEALANT AT ALL PANEL JOINTS (INTERIOR AND EXTERIOR)
5. PROVIDE BACKER ROD AND SEALANT CONTINUOUS AROUND ALL ALUMINUM FRAMING AND HOLLOW METAL
- (CA) BASE COLOR: NEBULUS WHITE (SW 7063)
 - (CB) SECONDARY COLOR: GRAY MATTERS (SW 7066)
 - (CC) WATERTABLE COLOR: CITY SCAPE (SW 7067)
 - (CD) BLUE ACCENT COLOR: GEORGIAN BAY (SW 6509)



2 OVERALL NORTH ELEVATION
1/16" = 1'-0"