



HINMAN

DEVELOPMENT ♦ MANAGEMENT ♦ LEASING

OFFICE SPACE FOR LEASE
7895 CURRIER DRIVE

7895 CURRIER DRIVE | PORTAGE, MI 49002



OFFICE SPACE FOR LEASE

7895 CURRIER DRIVE

7895 CURRIER DRIVE | PORTAGE, MI 49002

7895 CURRIER DRIVE

Portage

7895 CURRIER DRIVE IS A TWO-STORY, 26,933 SF OFFICE BUILDING LOCATED AT E CENTRE AVENUE AND CURRIER DRIVE IN PORTAGE, MICHIGAN; ADJACENT TO THE PORTAGE CITY CENTRE. THIS FREE-STANDING BUILDING OFFERS AN UNMATCHED OPPORTUNITY IN THE REGION TO CREATE A UNIQUE ENVIRONMENT THAT ENCOURAGES COLLABORATION, PRODUCTIVITY, AND WELLNESS TO BRING TENANTS AND IDEAS TO NEW HEIGHTS. THIS MULTI-TENANT BUILDING IS AVAILABLE FOR TRADITIONAL, MEDICAL OR FLEX OFFICE USE.



SUBURBAN
OFFICE SETTING,
PROFESSIONALLY
MANAGED



MULTIPLE RETAIL &
DINING OPTIONS
NEARBY



CONVENIENT &
FREE EMPLOYEE /
VISITOR PARKING



REGIONAL
LOCATION WITH
EASY ACCESS TO
US-131 & I-94



ABILITY FOR
24 HOUR CARD
ACCESS & VIDEO
SECURITY



4.0 MILES TO
KALAMAZOO /BC
INTERNATIONAL
AIRPORT



PYLON SIGNAGE
OPPORTUNITIES
AVAILABLE



CONNECTED
ACCESS TO
WALKING &
BIKING TRAILS



METRO TRANSIT
STOP LOCATED
ACROSS THE
STREET

LEASING //

HINMANCOMPANY.COM



COLE RATHBUN
REGIONAL DIRECTOR OF LEASING
269.488.3658
COLE@HINMANCOMPANY.COM



DAISY BLUMAN
LEASING ASSOCIATE
269.488.3664
DAISY@HINMANCOMPANY.COM

MULTI-TENANT LOBBY REMODEL

7895 CURRIER DRIVE

7895 CURRIER DRIVE | PORTAGE, MI 49002



LEASING //

[HINMANCOMPANY.COM](https://www.hinmancompany.com)



COLE RATHBUN
REGIONAL DIRECTOR OF LEASING
269.488.3658
COLE@HINMANCOMPANY.COM



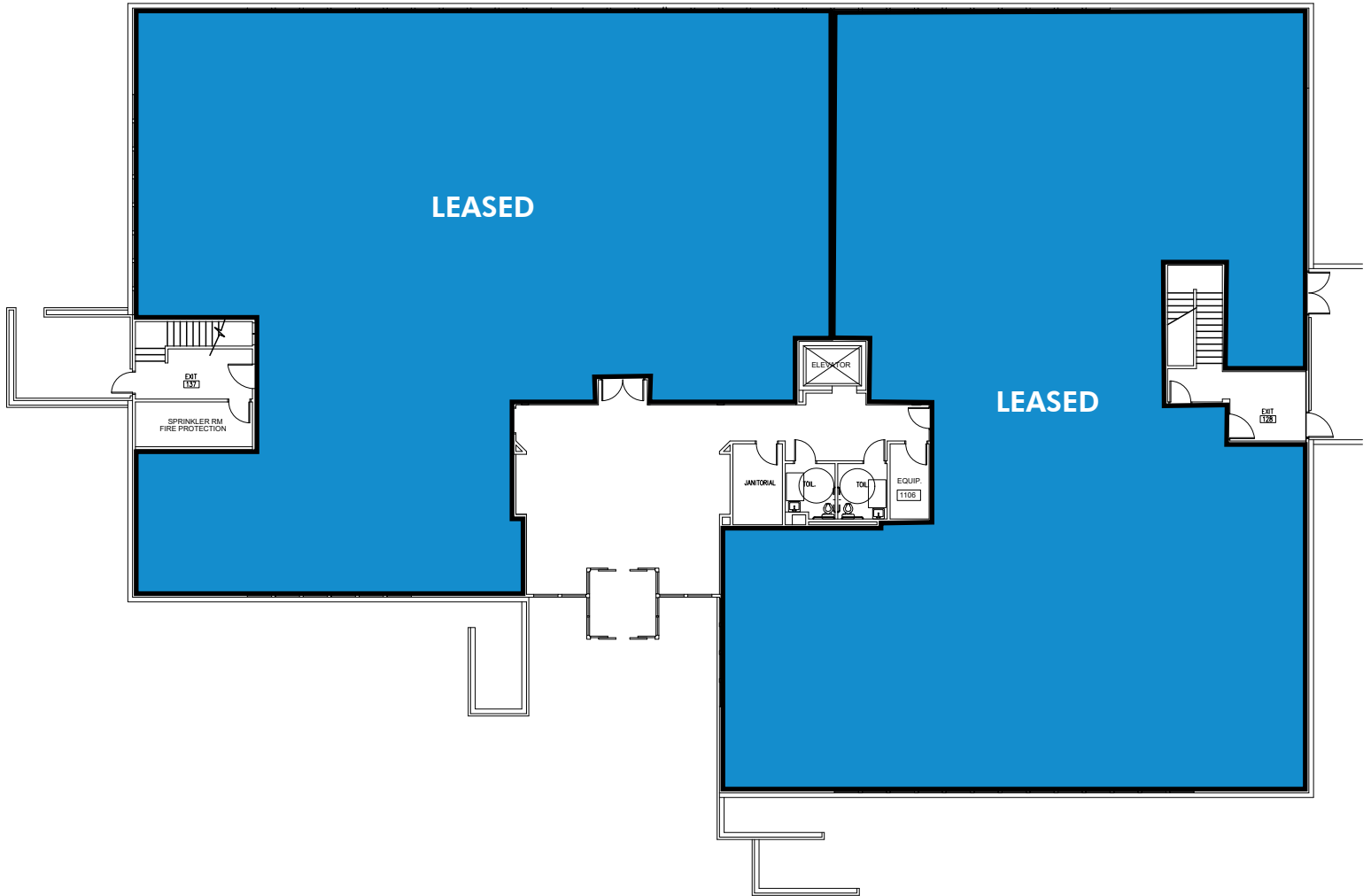
DAISY BLUMAN
LEASING ASSOCIATE
269.488.3664
DAISY@HINMANCOMPANY.COM

OFFICE SPACE FOR LEASE

7895 CURRIER DRIVE

7895 CURRIER DRIVE | PORTAGE, MI 49002

1ST FLOOR | FULLY LEASED



LEASING //

[HINMANCOMPANY.COM](https://www.hinmancompany.com)



COLE RATHBUN
REGIONAL DIRECTOR OF LEASING
269.488.3658
COLE@HINMANCOMPANY.COM



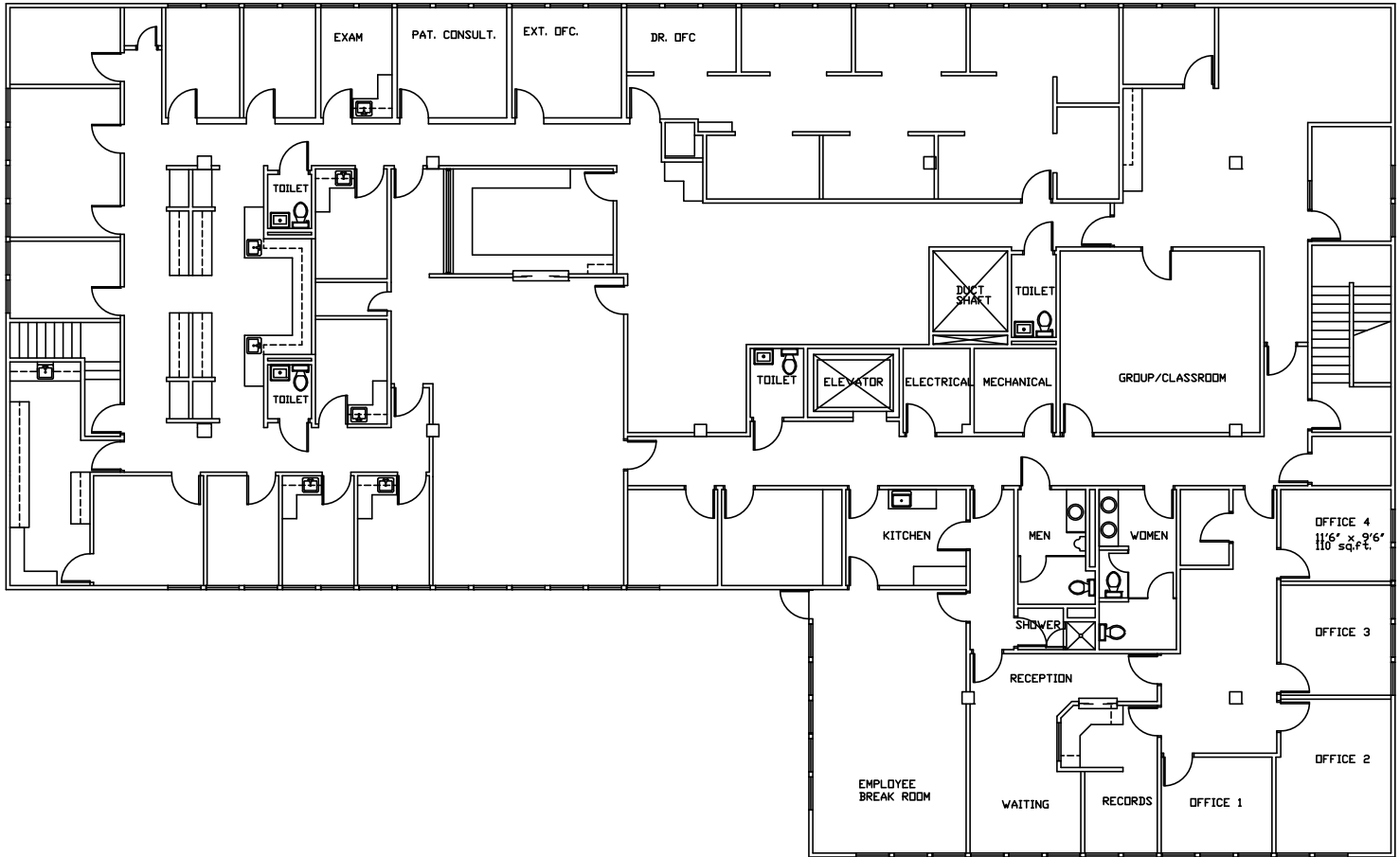
DAISY BLUMAN
LEASING ASSOCIATE
269.488.3664
DAISY@HINMANCOMPANY.COM

OFFICE SPACE FOR LEASE

7895 CURRIER DRIVE

7895 CURRIER DRIVE | PORTAGE, MI 49002

2ND FLOOR | UP TO 10,967 SF



LEASING //

HINMANCOMPANY.COM



COLE RATHBUN
REGIONAL DIRECTOR OF LEASING
269.488.3658
COLE@HINMANCOMPANY.COM

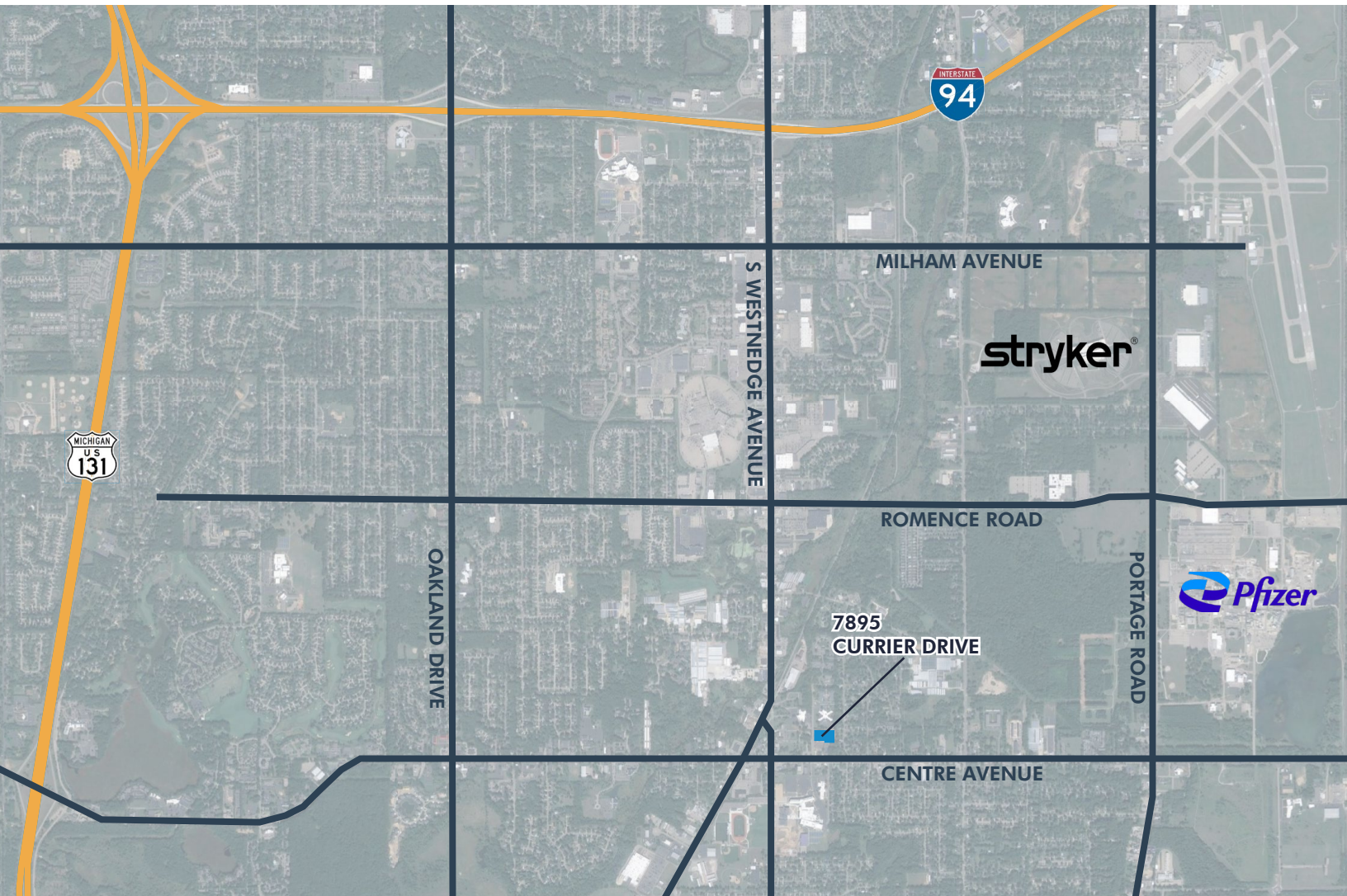


DAISY BLUMAN
LEASING ASSOCIATE
269.488.3664
DAISY@HINMANCOMPANY.COM

LOCATION

7895 CURRIER DRIVE

7895 CURRIER DRIVE | PORTAGE, MI 49002



LEASING //

[HINMANCOMPANY.COM](https://www.hinmancompany.com)



COLE RATHBUN
REGIONAL DIRECTOR OF LEASING
269.488.3658
COLE@HINMANCOMPANY.COM



DAISY BLUMAN
LEASING ASSOCIATE
269.488.3664
DAISY@HINMANCOMPANY.COM

LOCATION

7895 CURRIER DRIVE

7895 CURRIER DRIVE | PORTAGE, MI 49002



LEASING //

[HINMANCOMPANY.COM](https://www.hinmancompany.com)



COLE RATHBUN
REGIONAL DIRECTOR OF LEASING
269.488.3658
COLE@HINMANCOMPANY.COM



DAISY BLUMAN
LEASING ASSOCIATE
269.488.3664
DAISY@HINMANCOMPANY.COM

KALAMAZOO MARKET OVERVIEW

7895 CURRIER DRIVE

7895 CURRIER DRIVE | PORTAGE, MI 49002

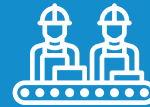
STRATEGICALLY LOCATED HALFWAY BETWEEN CHICAGO & DETROIT, KALAMAZOO HAS CONTINUED TO BE A HUB OF ECONOMIC DEVELOPMENT.



REGIONAL
POPULATION OF
783,308



MORE THAN
17,548
COMPANIES IN
REGION



\$16.35 BILLION
GROSS REGIONAL
PRODUCT



3 COLLEGES AND
UNIVERSITIES



UNEMPLOYMENT
RATE OF 3%



COST OF LIVING
IS 22.5% LOWER
THAN NATIONAL
AVERAGE



HIGHWAY SYSTEM
OFFERS MULTI-
REGIONAL
ACCESSIBILITY



AVERAGE 20
MINUTE TRAVEL
TIME FOR MOST
COMMUTERS



DAILY FLIGHTS TO
2 MIDWEST HUBS
VIA AZO AIRPORT

RECOGNITIONS

- RANKED #1 BEST CITY FOR HIGH SALARIES & LOW COSTS OF LIVING BY **FOOL.COM**
- RANKED #1 COOLEST CITY WITH THE LOWEST COST OF LIVING BY **PUREWOW**
- RANKED #4 MOST AFFORDABLE OUTDOORSY CITY BY **REALTOR.COM**
- RANKED #14 TOP CITY FOR TWENTY-SOMETHINGS BY **BUZZ FEED**

LEASING //

HINMANCOMPANY.COM



COLE RATHBUN
REGIONAL DIRECTOR OF LEASING
269.488.3658
COLE@HINMANCOMPANY.COM



DAISY BLUMAN
LEASING ASSOCIATE
269.488.3664
DAISY@HINMANCOMPANY.COM