



1776 Broadway

Broadway and West 57th Street



Property Highlights

- Newly Renovated Lobby
- 24 Hour Attended Lobby
- Cleaning Included
- Great Natural Light & Views
- Close to Columbus Circle and Central Park
- Transportation N,Q,R, 1,2,3, A,C,E

Availabilities
1,247 - 4,949
Square Feet

Asking Rent
Upon Request

Possession
Immediate

Term
Flexible

CONTACT AGENTS

Justin Gentile
Director / Leasing
jgentile@rreny.com
212.519.2056

Jeffrey Zund
Executive Director
jzund@rreny.com
212.519.2032

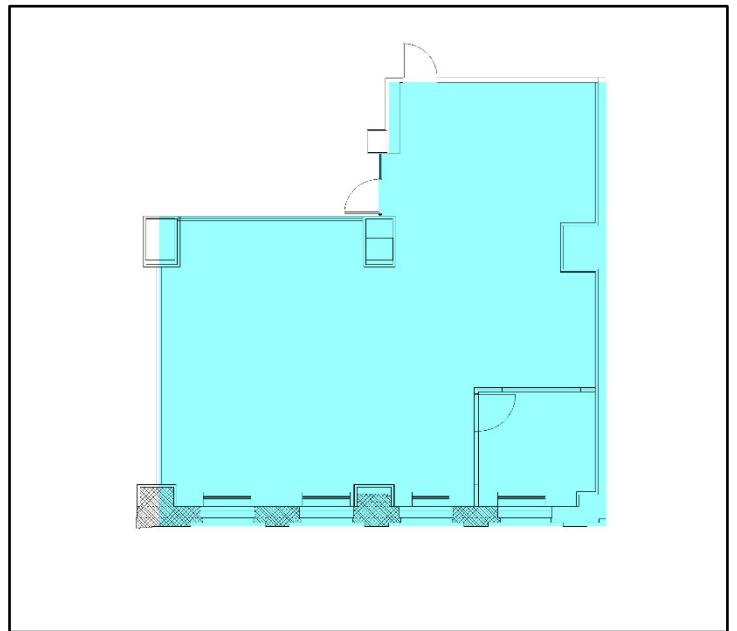
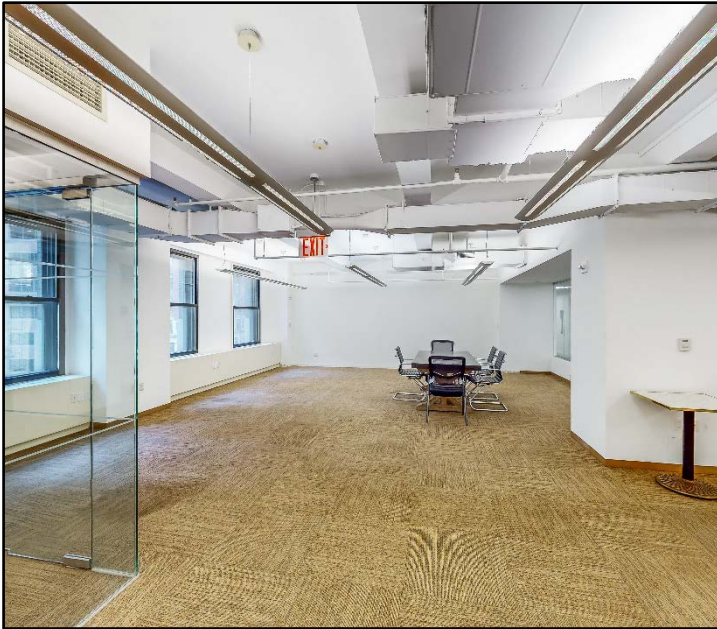
RE SOLUTION
REAL ESTATE PARTNERS
A Member of **RE/MAX**

1776 Broadway

5th Floor

Suite 501 | 2,166 RSF

- Built with 1 glass office
- Exposed ceilings
- Landlord can upgrade / modify



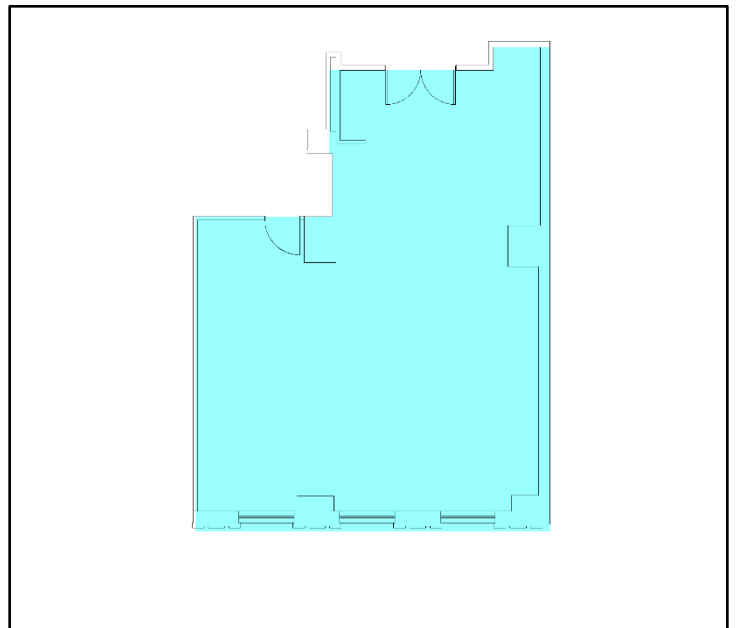
1776 Broadway

6th Floor

CLICK FOR
VIRTUAL TOUR

Suite 601 | 1,788 RSF

- Newly renovated
- Open layout with exposed ceilings
- New LED lighting
- Landlord can build / modify



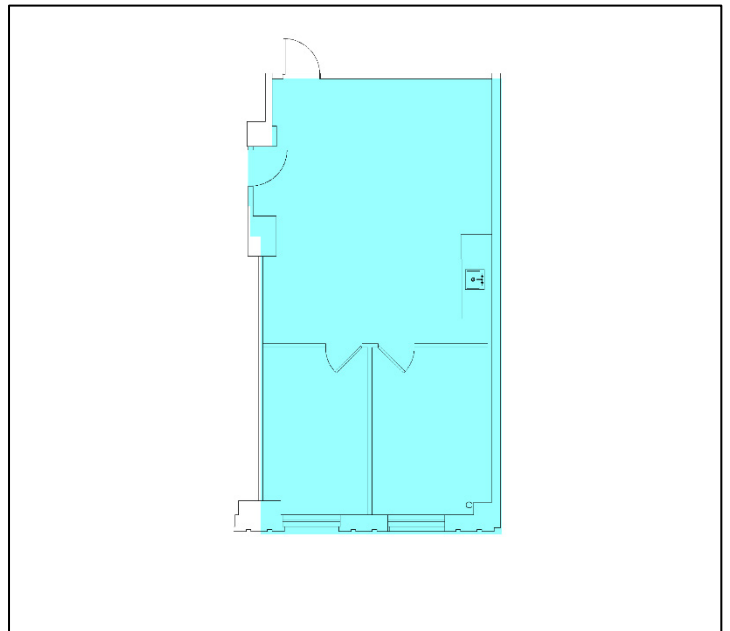
1776 Broadway

7th Floor

CLICK FOR
VIRTUAL TOUR

Suite 710A | 1,247 RSF

- Move-in ready space
- 2 Offices
- Wet pantry
- Landlord can upgrade / modify



Although all information furnished regarding property for sale, rental, or financing is from sources deemed reliable, such information has not been verified and no express representation is made, nor is any to be implied as to the accuracy thereof, and it is submitted subject to errors, omissions, change of price, rental or other conditions, prior sale, lease or financing, or withdrawal without notice.

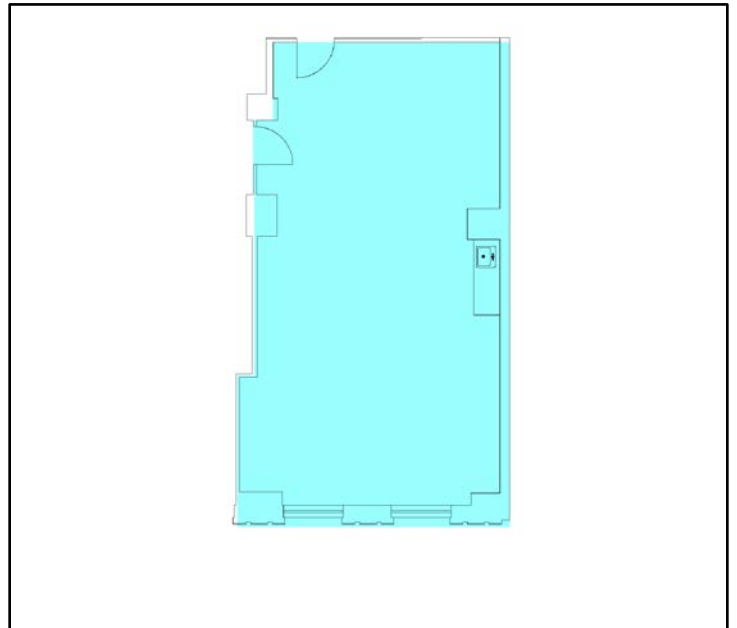
1776 Broadway

8th Floor

CLICK FOR
VIRTUAL TOUR

Suite 800 | 1,311 RSF

- Newly renovated
- Open layout with wet pantry
- New LED lighting
- Landlord can build / modify



Although all information furnished regarding property for sale, rental, or financing is from sources deemed reliable, such information has not been verified and no express representation is made, nor is any to be implied as to the accuracy thereof, and it is submitted subject to errors, omissions, change of price, rental or other conditions, prior sale, lease or financing, or withdrawal without notice.

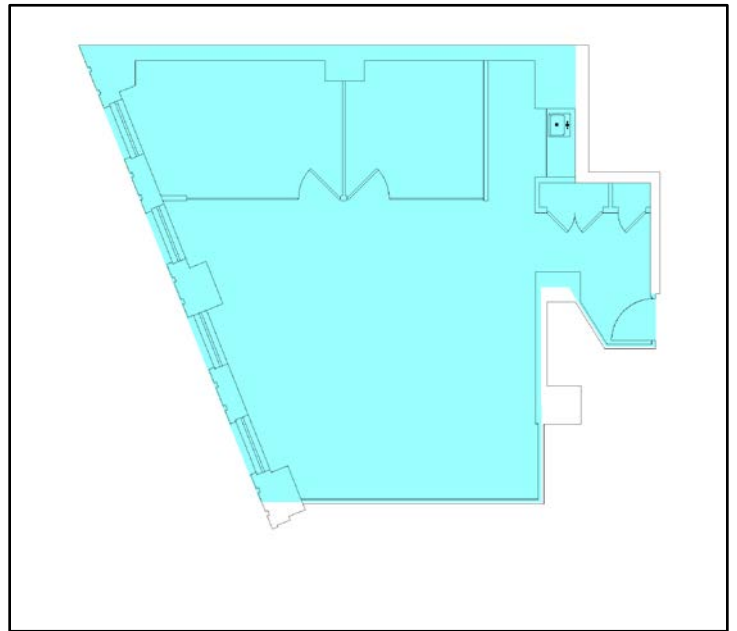
1776 Broadway

8th Floor

CLICK FOR
VIRTUAL TOUR

Suite 802 | 1,610 RSF

- Move-in ready space
- 2 Glass fronted offices
- Wet pantry, exposed ceilings
- Landlord can upgrade / modify



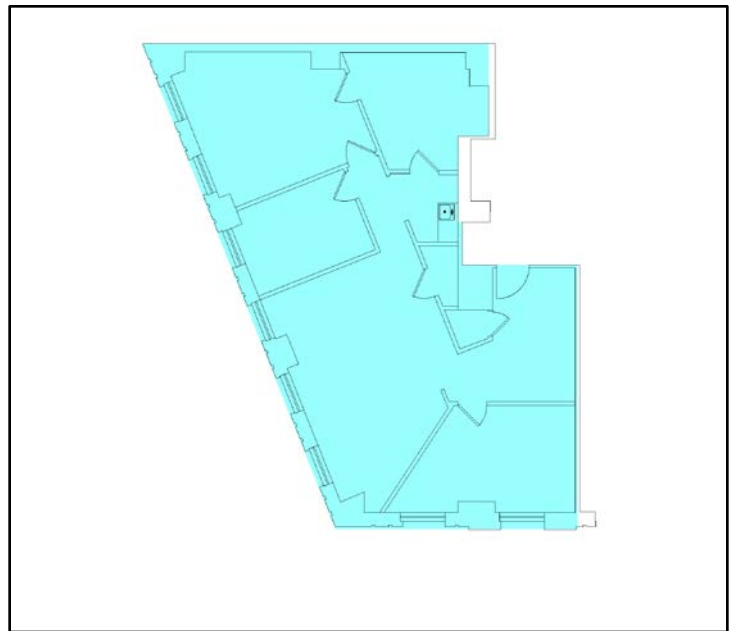
1776 Broadway

9th Floor

CLICK FOR
VIRTUAL TOUR

Suite 900 | 2,542 RSF

- Contiguous with suite 901
- Built, ready to go space
- Corner unit (57th & Broadway)
- Landlord can upgrade/modify



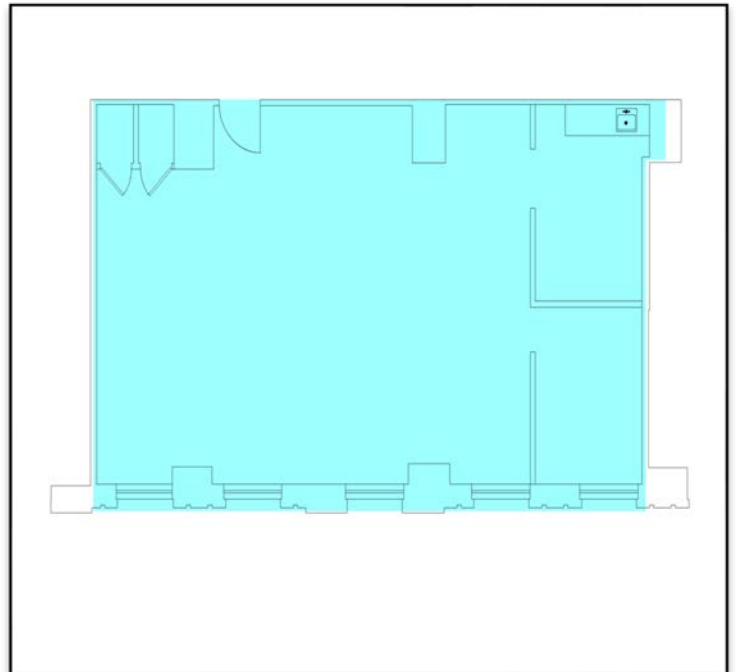
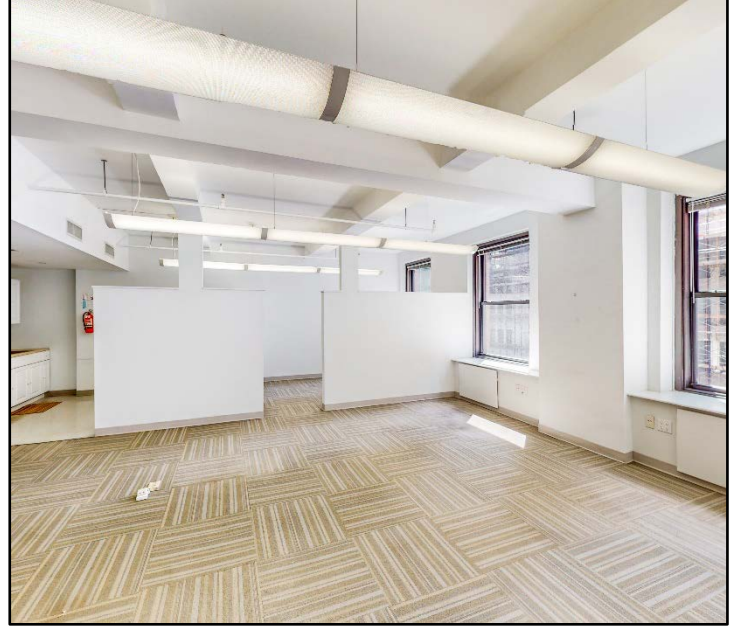
1776 Broadway

9th Floor

CLICK FOR
VIRTUAL TOUR

Suite 901 | 2,058 RSF

- Contiguous with suite 900
- Wet pantry
- Open layout
- Landlord can rebuild / modify



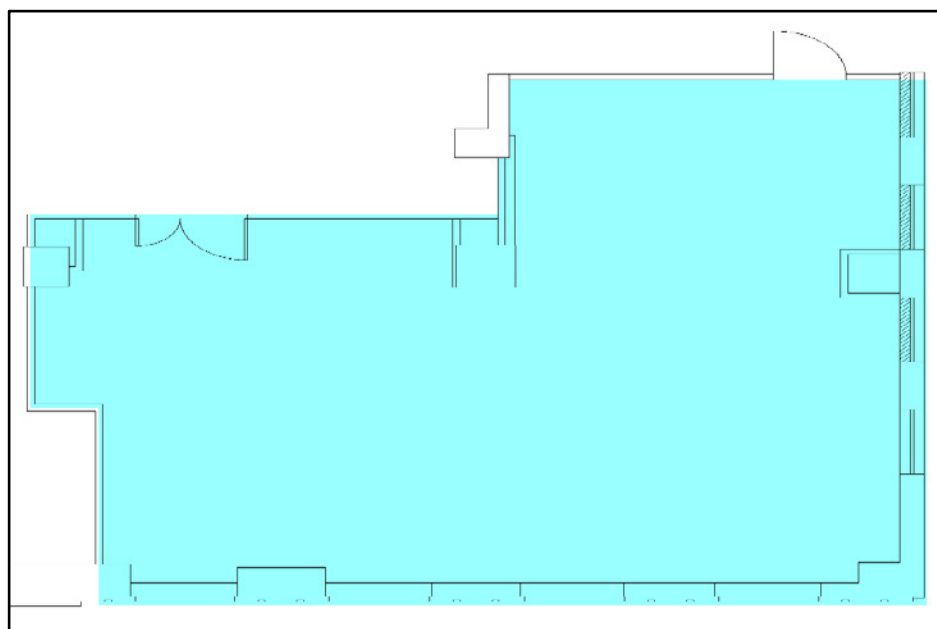
1776 Broadway

15th Floor

CLICK FOR
VIRTUAL TOUR

Suite 1501 | 2,105 RSF

- Open layout with pantry
- Polished concrete floors
- Exposed ceilings
- Great natural light and views



Although all information furnished regarding property for sale, rental, or financing is from sources deemed reliable, such information has not been verified and no express representation is made, nor is any to be implied as to the accuracy thereof, and it is submitted subject to errors, omissions, change of price, rental or other conditions, prior sale, lease or financing, or withdrawal without notice.

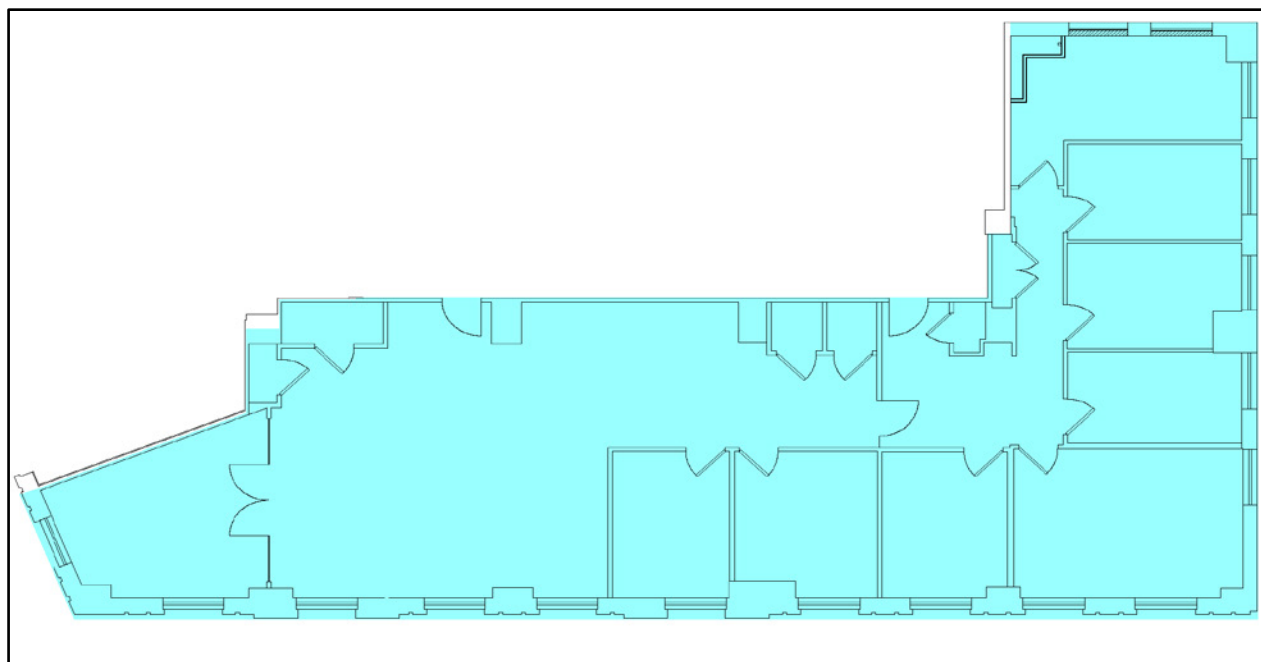
1776 Broadway

16th Floor

CLICK FOR
VIRTUAL TOUR

Suite 1600/2 | 4,308 RSF

- Corner unit, with great natural light
- Glass fronted offices
- Built ready to go space
- Space is divisible to 1,926/2,383 SF



Although all information furnished regarding property for sale, rental, or financing is from sources deemed reliable, such information has not been verified and no express representation is made, nor is any to be implied as to the accuracy thereof, and it is submitted subject to errors, omissions, change of price, rental or other conditions, prior sale, lease or financing, or withdrawal without notice.

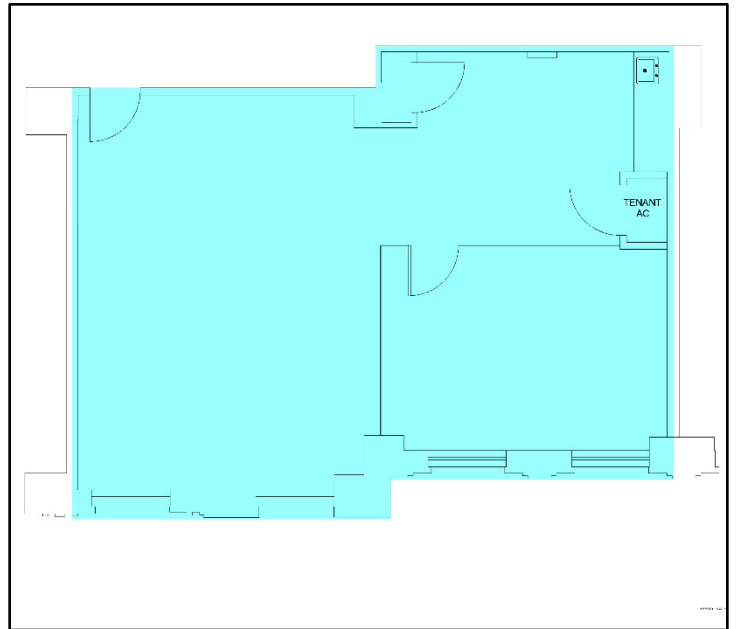
18 East 41st Street

20th Floor

CLICK FOR
VIRTUAL TOUR

Suite 2001 | 1,464 RSF

- Newly built unit with great natural light & polished concrete floors
- 1 glass conference room
- Wet pantry



Although all information furnished regarding property for sale, rental, or financing is from sources deemed reliable, such information has not been verified and no express representation is made, nor is any to be implied as to the accuracy thereof, and it is submitted subject to errors, omissions, change of price, rental or other conditions, prior sale, lease or financing, or withdrawal without notice.

1776 Broadway

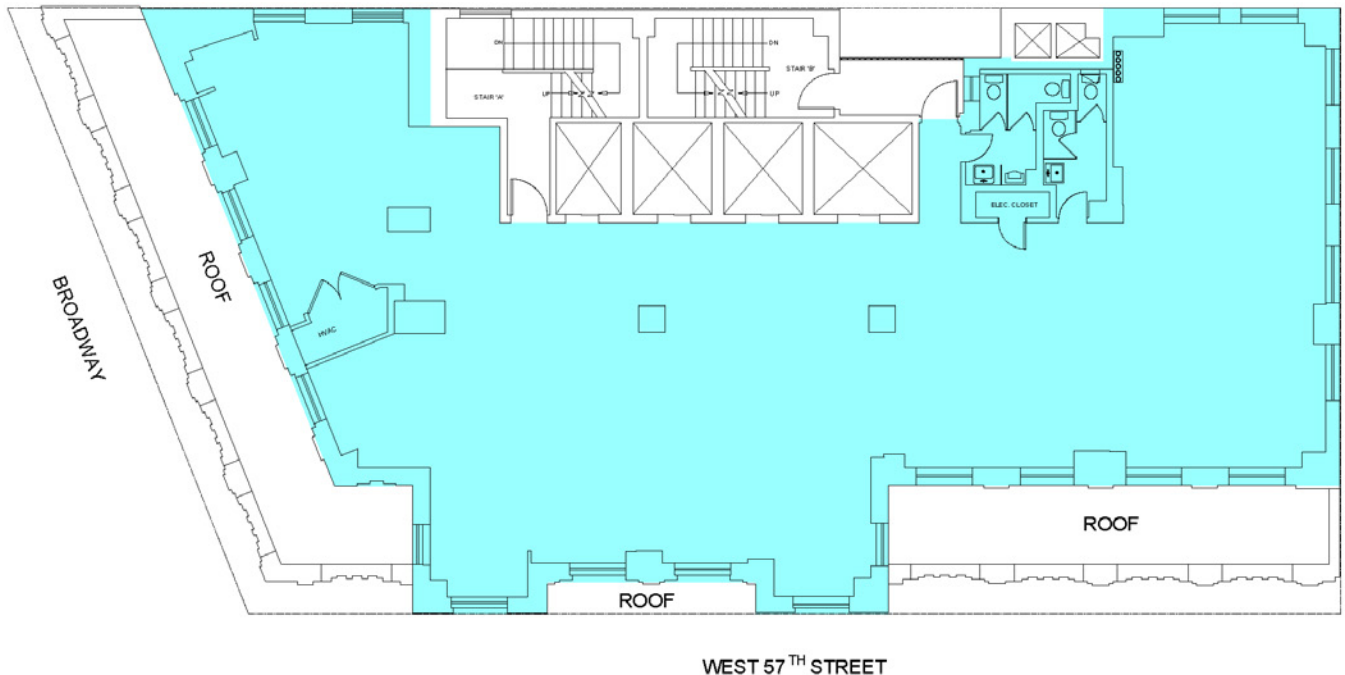
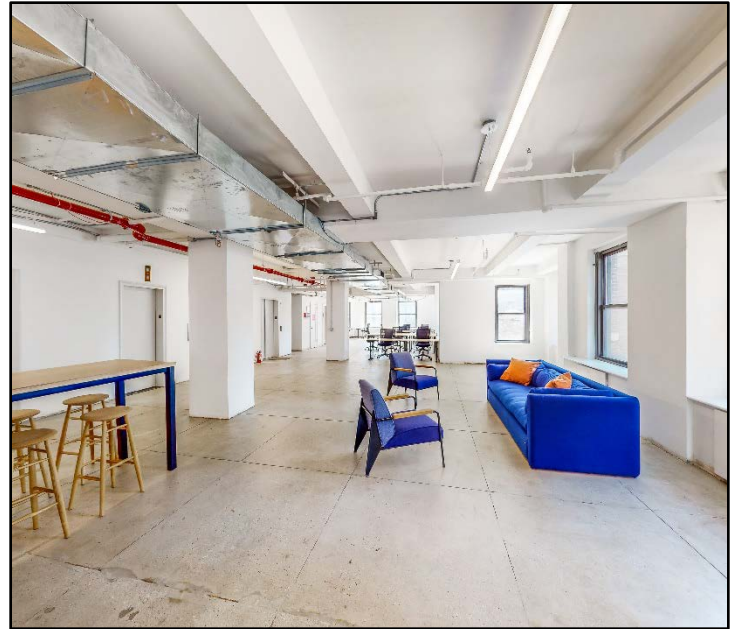
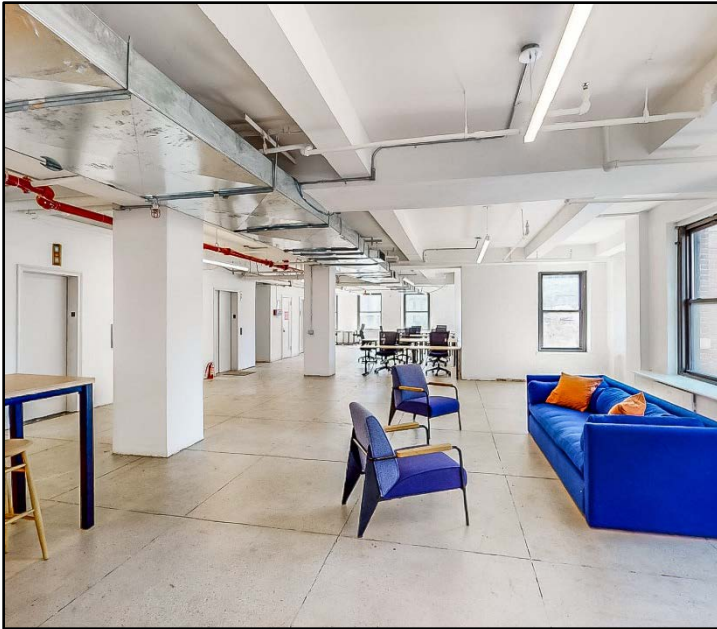
21st Floor

CLICK FOR
VIRTUAL TOUR

Entire 21st Floor | 4,511 RSF

★ SPECTACULAR SPACE!

- Open layout w/ polished concrete floors & exposed ceilings
- Landlord can modify / build
- Two private terraces
- Windows on all sides with views of Columbus circle & Broadway



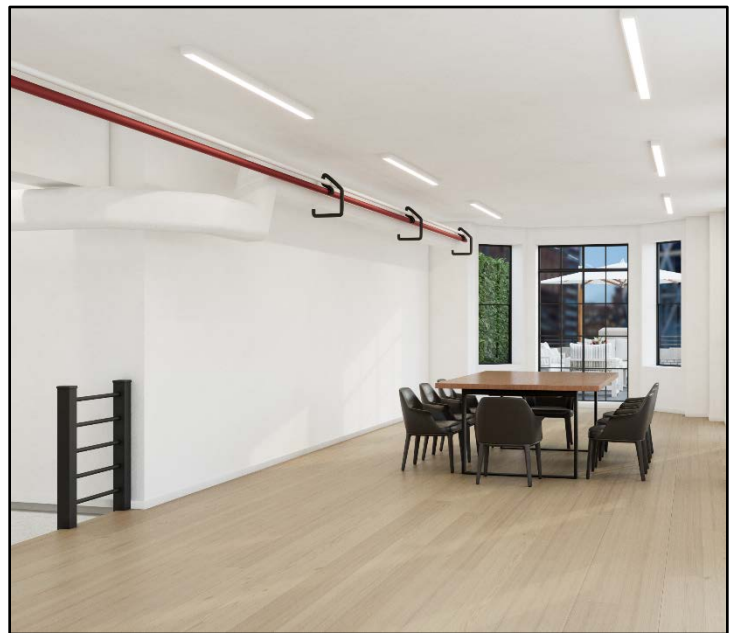
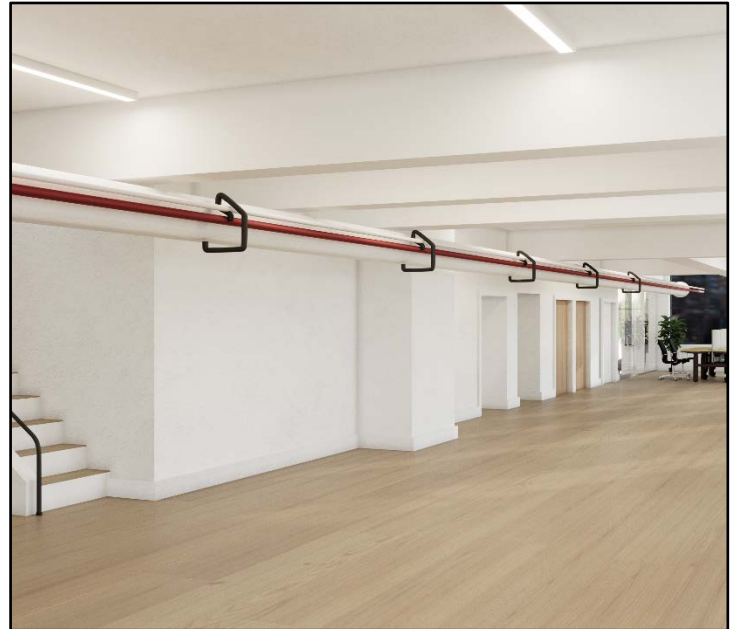
Although all information furnished regarding property for sale, rental, or financing is from sources deemed reliable, such information has not been verified and no express representation is made, nor is any to be implied as to the accuracy thereof, and it is submitted subject to errors, omissions, change of price, rental or other conditions, prior sale, lease or financing, or withdrawal without notice.

1776 Broadway

Penthouse | Entire 24th & 25th Floors

PH | 4,949 RSF ★ **UNIQUE ONE-OF-A-KIND OPPORTUNITY!**

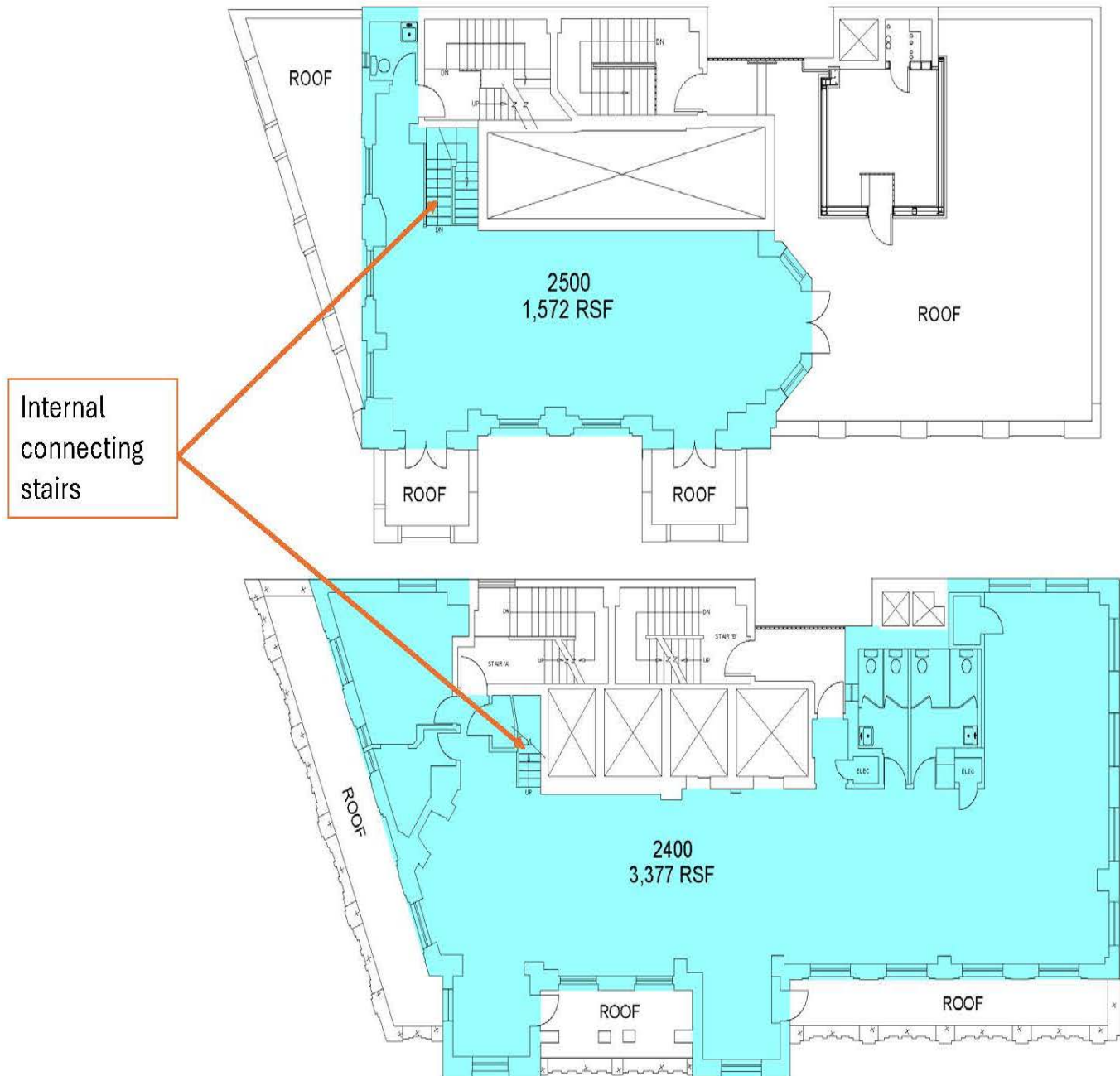
- Space is currently in raw condition
- Landlord will renovate/turn-key for qualifying, long-term tenant
- Incredible natural light & views
- Multiple private terraces and rooftop patio



1776 Broadway

Penthouse | Entire 24th & 25th Floors

Floor Plan



Although all information furnished regarding property for sale, rental, or financing is from sources deemed reliable, such information has not been verified and no express representation is made, nor is any to be implied as to the accuracy thereof, and it is submitted subject to errors, omissions, change of price, rental or other conditions, prior sale, lease or financing, or withdrawal without notice.