

# 619-701

## OCEAN FRONT WALK

### VENICE BEACH



**PRIME RETAIL FOR LEASE**

±303 SF - ±1,550 SF AVAILABLE

**JAY LUCHS**

Vice Chairman

310-407-6585

[jay.luchs@nrmk.com](mailto:jay.luchs@nrmk.com)

CA RE Lic. #01260345

**JAYLUCHS.COM**

**GAVIN KETCHUM**

Director

310-407-6593

[gavin.ketchum@nrmk.com](mailto:gavin.ketchum@nrmk.com)

CA RE Lic. #01929170

**NEWMARK**



# 619-701

OCEAN FRONT WALK



## ADDRESS

619-701 Ocean Front Walk  
Venice, CA 90291

## USE

**619A:** Retail/To-Go Food/Beverage\*  
**619B:** Retail  
**701:** Retail

\*No gas or hood

## SIZE

**619A:** ±303 SF  
**619B:** ±950 SF  
**701:** ±1,550 SF

## RENT

Available upon Request

**JAY LUCHS**

Vice Chairman

310-407-6585

[jay.luchs@nrmk.com](mailto:jay.luchs@nrmk.com)

CA RE Lic. #01260345

**JAYLUCHS.COM**

**GAVIN KETCHUM**

Director

310-407-6593

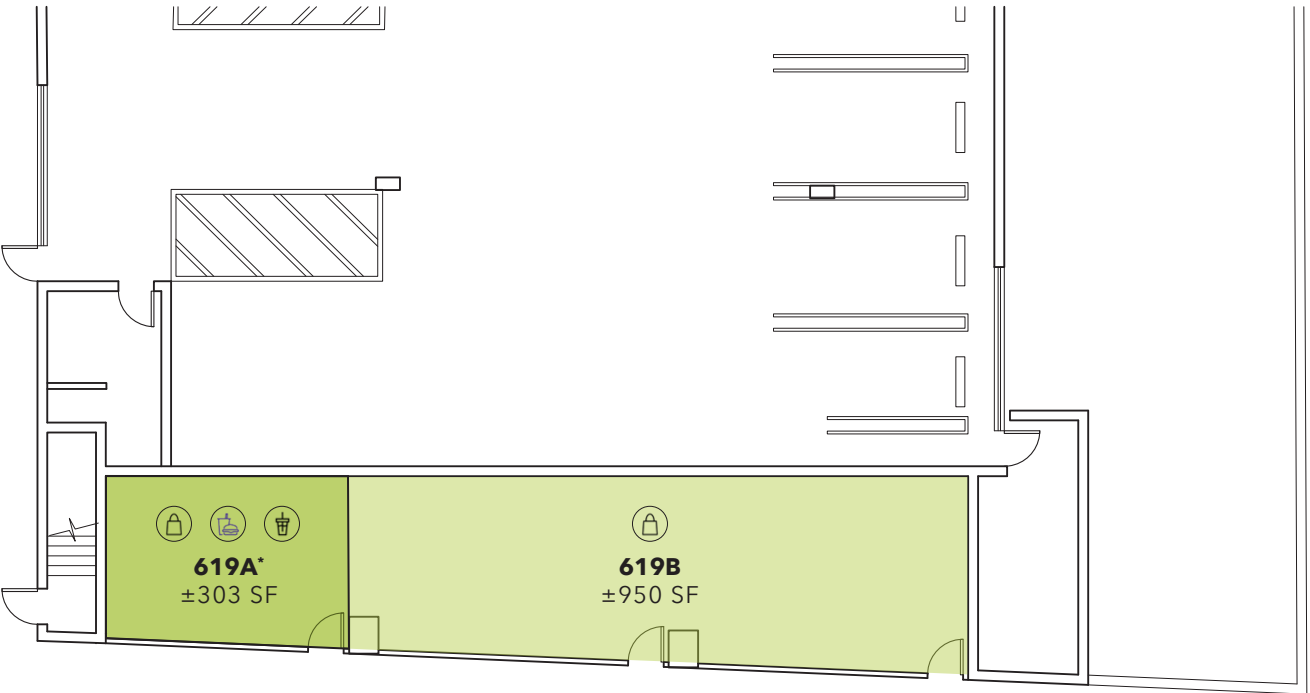
[gavin.ketchum@nrmk.com](mailto:gavin.ketchum@nrmk.com)

CA RE Lic. #01929170

**NEWMARK**

# 619-701

## OCEAN FRONT WALK



OCEAN FRONT WALK

### 619 OCEAN FRONT WALK FLOOR PLAN

\*619A: No gas or hood

**JAY LUCHS**

Vice Chairman

310-407-6585

[jay.luchs@nrmk.com](mailto:jay.luchs@nrmk.com)

CA RE Lic. #01260345

**JAYLUCHS.COM**

**GAVIN KETCHUM**

Director

310-407-6593

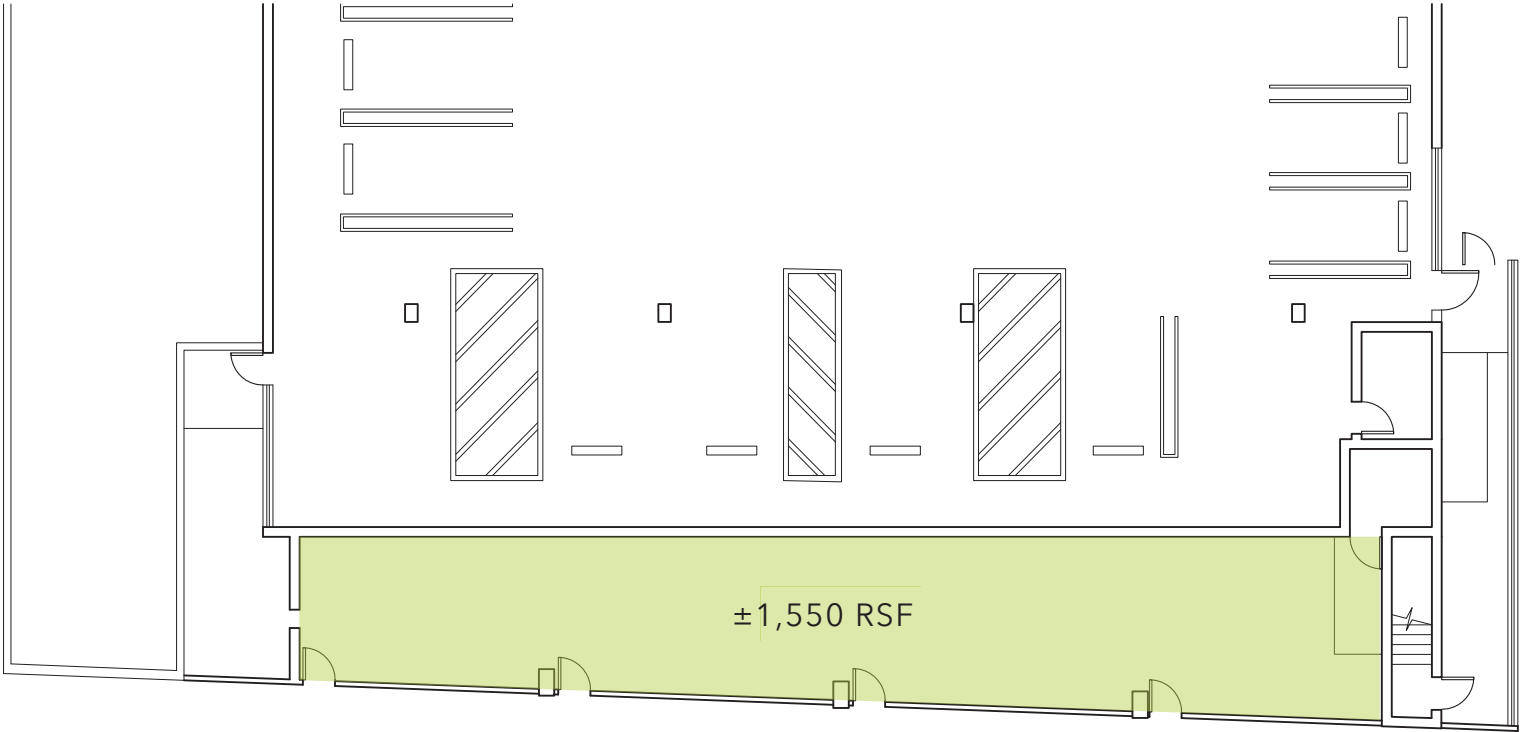
[gavin.ketchum@nrmk.com](mailto:gavin.ketchum@nrmk.com)

CA RE Lic. #01929170

**NEWMARK**

# 619-701

## OCEAN FRONT WALK



OCEAN FRONT WALK

### 701 OCEAN FRONT WALK FLOOR PLAN

**JAY LUCHS**

Vice Chairman

310-407-6585

[jay.luchs@nmrk.com](mailto:jay.luchs@nmrk.com)

CA RE Lic. #01260345

**JAYLUCHS.COM**

**GAVIN KETCHUM**

Director

310-407-6593

[gavin.ketchum@nmrk.com](mailto:gavin.ketchum@nmrk.com)

CA RE Lic. #01929170

**NEWMARK**



The information contained herein has been obtained from sources deemed reliable but has not been verified and no guarantee, warranty or representation, either express or implied, is made with respect to such information. Terms of sale or lease and availability are subject to change or withdrawal without notice.

**JAY LUCHS**

Vice Chairman

310-407-6585

[jay.luchs@nrmk.com](mailto:jay.luchs@nrmk.com)

CA RE Lic. #01260345

**JAYLUCHS.COM**

**GAVIN KETCHUM**

Director

310-407-6593

[gavin.ketchum@nrmk.com](mailto:gavin.ketchum@nrmk.com)

CA RE Lic. #01929170

**NEWMARK**