

FOR LEASE

227-231 Kearny St.

San Francisco, CA 94108

CALL FOR PRICE.

Craig Hansson

Vice President

craig@starboardcre.com

Cell: 415-710-7768

CA BRE #01841643

Mark Meier

Senior Sales & Leasing Associate

mark@starboardcre.com

Cell: 415-299-7042

CA BRE #02047169

[View Online](#)



STARBOARD CRE
LOCAL • INDEPENDENT • ENTREPRENEURIAL

STARBOARDCRE.COM
OFC. PHONE 415.765.6900
49 POWELL STREET, SAN FRANCISCO, CA 94102

227 Kearny Street is a boutique office building located next to the corner of Kearny and Bush Street. Within walking distance to Montgomery BART and several great cafes and restaurants including Mixt, Rickhouse, Starbucks and Sam's Grill.

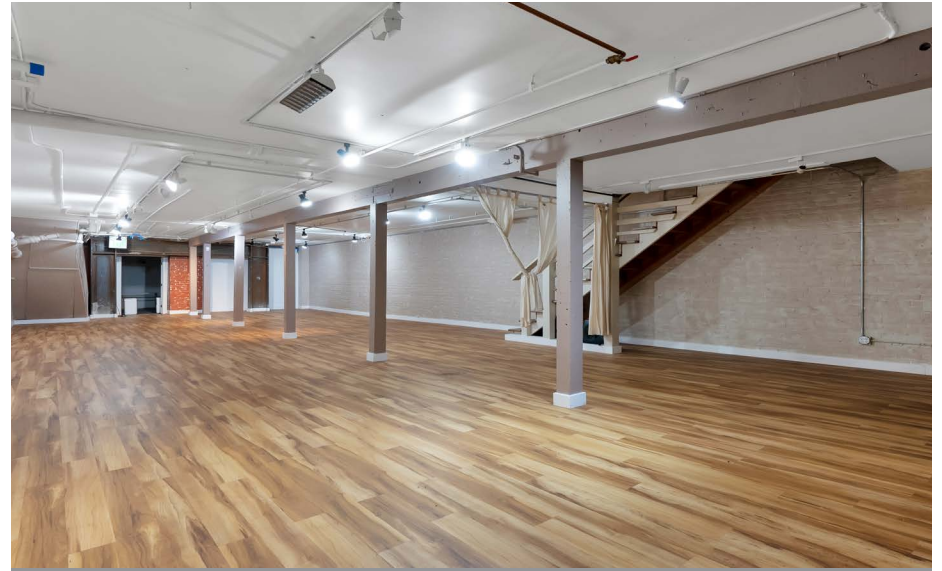
This building offers nice open floors with great natural light, operable windows, flexible lease terms and light foot traffic.

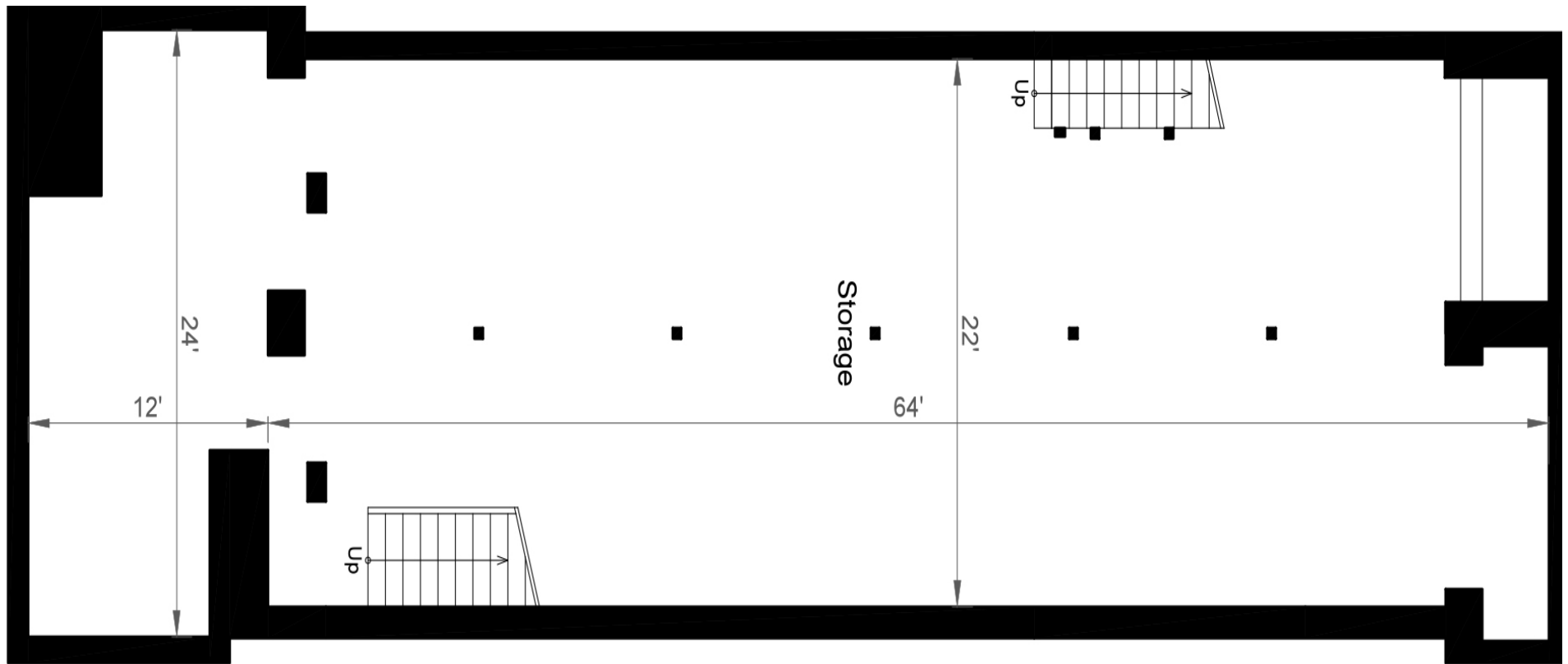
- Basement: **1,672 SF**
- Ground Floor (227 Kearny): **1,254 SF**
- 2nd Floor (229 Kearny): **1,232 SF**
- 3rd Floor (231 Kearny): **1,265 SF**
- **Total: 5,423 SF**



- 1,672 SF
- Open area
- Nicely finished



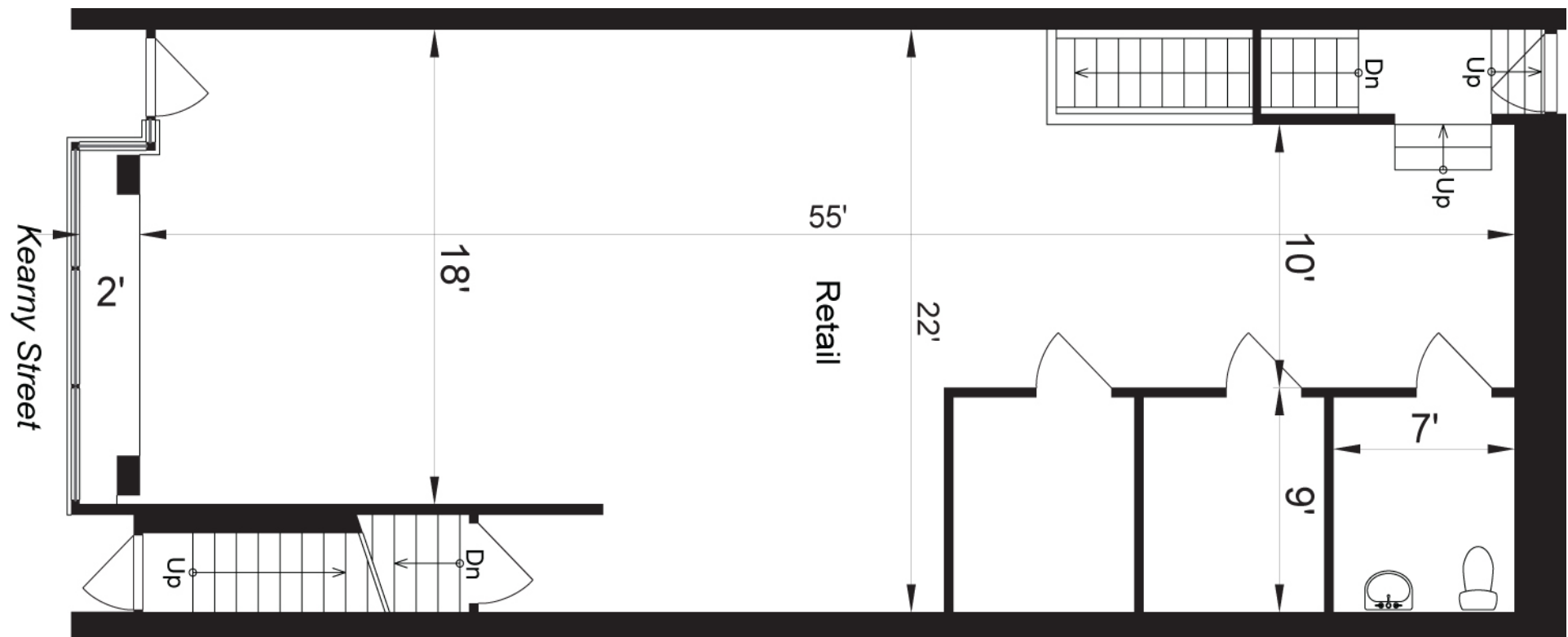




- **227 Kearny Street**
- 1,254 SF
- Open plan
- Two private rooms
- One restroom
- Direct access to Kearny Street



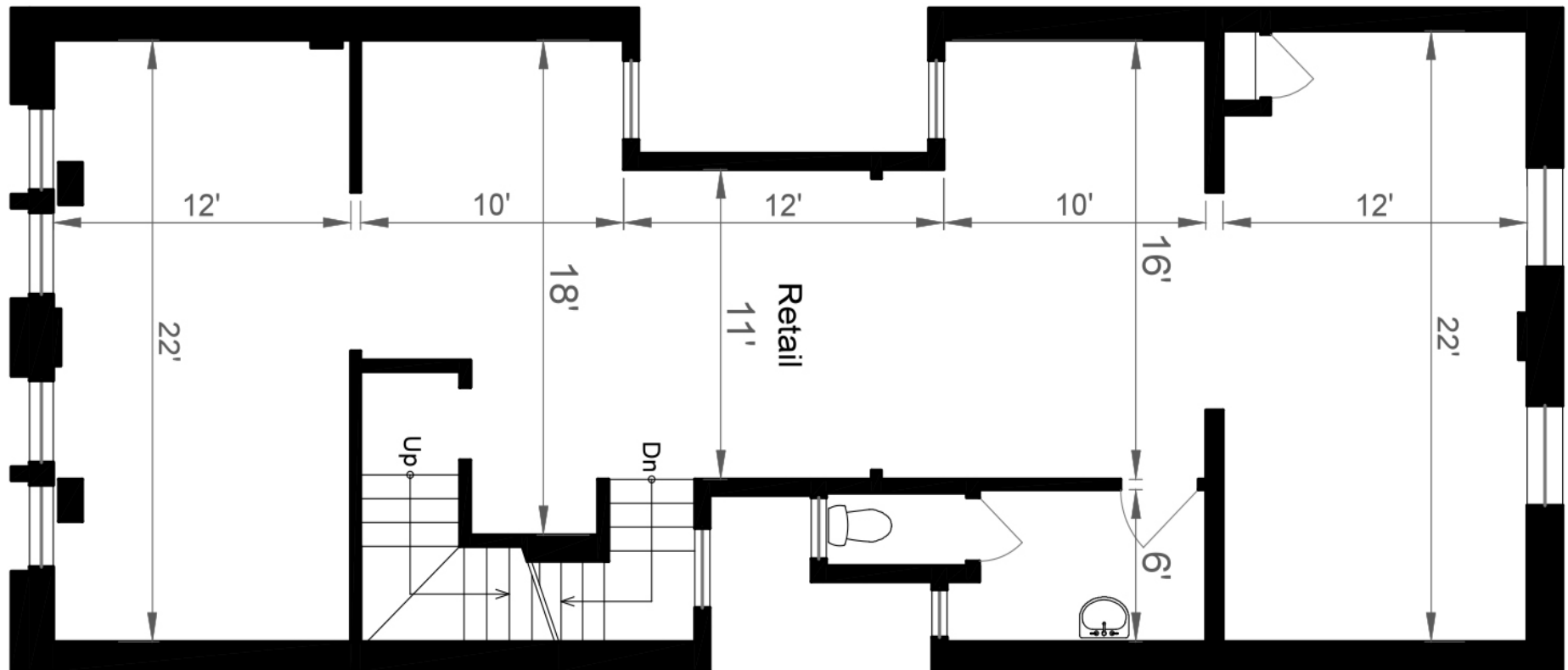




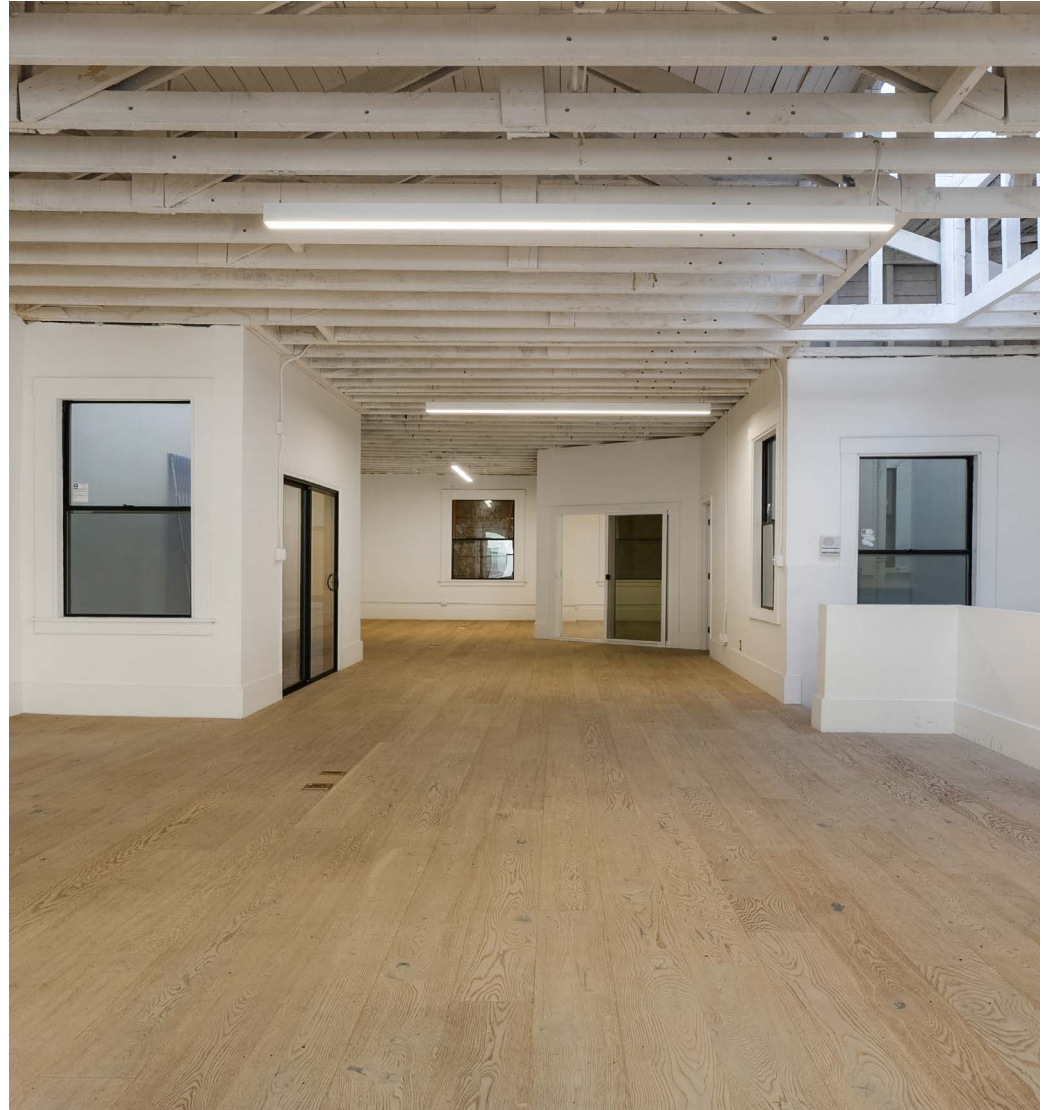
- **229 Kearny Street**
- 1,232 SF
- Efficient open floor plan
- Great natural light
- Two offices
- One restroom



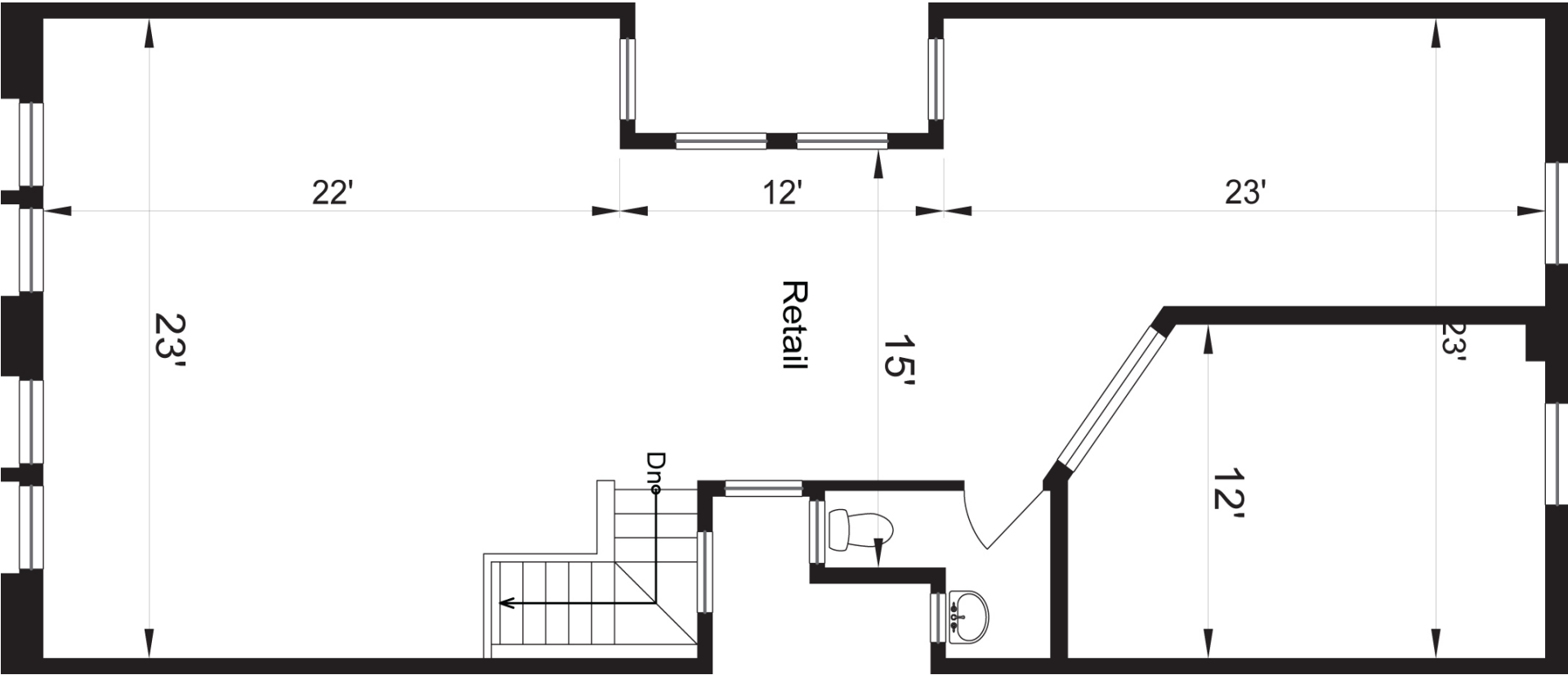




- **231 Kearny Street**
- 1,265 SF
- Open floor plan
- Great natural light with skylights
- One Conference room
- Outdoor area
- One restroom









STARBOARD CRE
LOCAL • INDEPENDENT • ENTREPRENEURIAL

STARBOARDCRE.COM

OFC. PHONE 415.765.6900

49 POWELL STREET, SAN FRANCISCO, CA 94102



Unique Vision

We see what others miss

Local Market Leader

No one knows Northern
California like we do

Full Service Firm

We do it all

Craig Hansson

Vice President

craig@starboardcre.com

Cell: 415-710-7768

CA BRE #01841643

Mark Meier

Senior Sales & Leasing Associate

mark@starboardcre.com

Cell: 415-299-7042

CA BRE #02047169

Locally based, technology forward, our brokers are highly qualified experts backed by a full-service, in-house support team who understand the intricacies of San Francisco real estate. Starboard CRE brings decades of brokerage experience representing over 600 million square feet of space with an aggregate lease value of over 10 billion and investments sold over 3 billion.

BRE# 01103056

