

15,000SF INDUSTRIAL BUILDING

FOR SALE OR LEASE








3235 FORTUNE DR., NORTH CHARLESTON, SC 29418





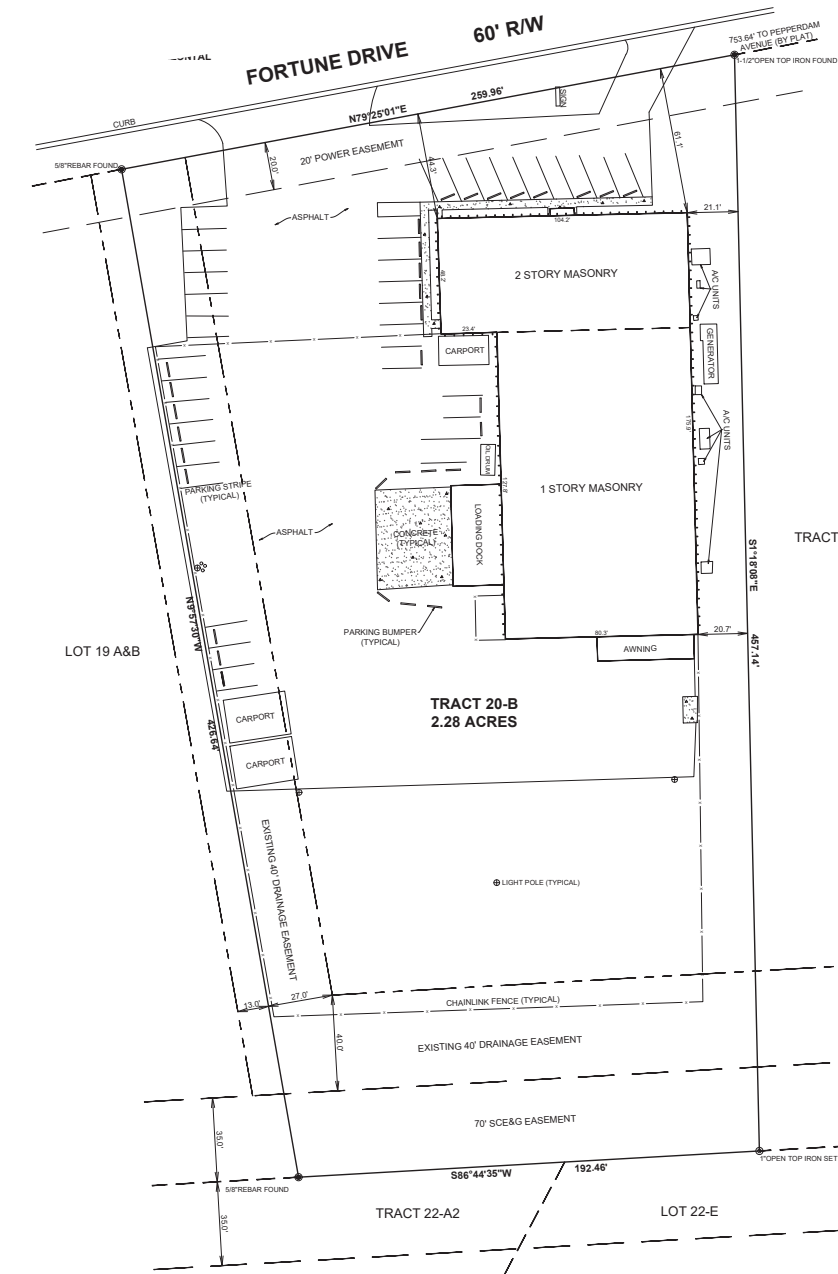
PROPERTY INFORMATION

BUILDING SIZE:	15,000 SF
MEZZANINE:	5,000 SF
EXISTING OFFICE:	5,000 SF
ACREAGE:	2.30
TMS:	397-00-00-136
MUNICIPALITY:	City of North Charleston
ZONING:	Light Industrial
RESTROOMS:	5
CLEAR HEIGHT:	16.5'
COLUMNS:	Centerline, 30' spacing
CONSTRUCTION:	Concrete T-Panel
DOCK HEIGHT DOORS:	Two - 11.5' x 11.5'
DRIVE IN DOORS:	1-(20' x 14')
BACK UP POWER:	Cummins Generator
WAREHOUSE DIMENSIONS:	80'x127'
AUTO PARKING SPACES:	40+
SECURE YARD:	Approx. 1 Acre
POWER:	Three Phase, 1000 amp(est.)
HVAC:	100%
LIGHTING:	Fluorescent
SPRINKLERS:	N/A

-  Heavy Power
-  Secure Outside Storage
-  Concrete Panel Construction
-  100% Climate Controlled
-  Recently Renovated Office Space



Charleston International Airport



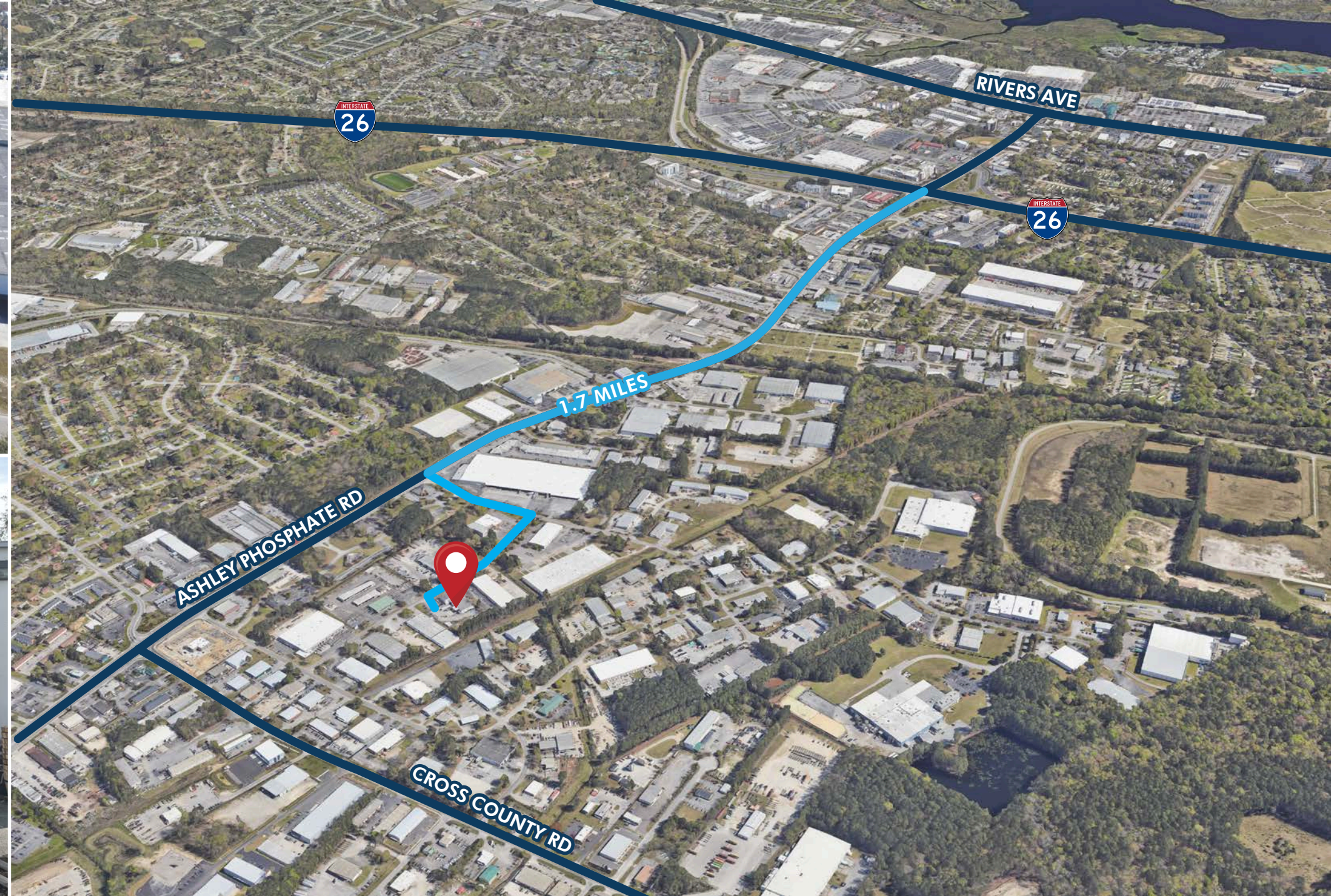


3235 FORTUNE DR., NORTH CHARLESTON, SC 29418

PROPERTY IMAGES

3235 FORTUNE DR., NORTH CHARLESTON, SC 29418

ACCESS MAP







## CONTACTS:

**Tradd Varner, SIOR**

Partner

+1.843.532.1684

tradd.varner@

harborcommercialpartners.com

**Todd Garrett, CCIM, SIOR**

Managing Partner

+1.843.408.8846

todd.garrett@

harborcommercialpartners.com

**Crawford Riddle**

Associate

+1.864.423.4973

crawford.riddle@

harborcommercialpartners.com

**Harbor**  
COMMERCIAL PARTNERS

harborcommercialpartners.com