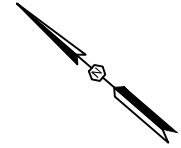
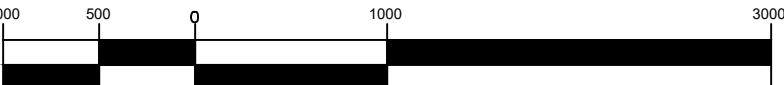
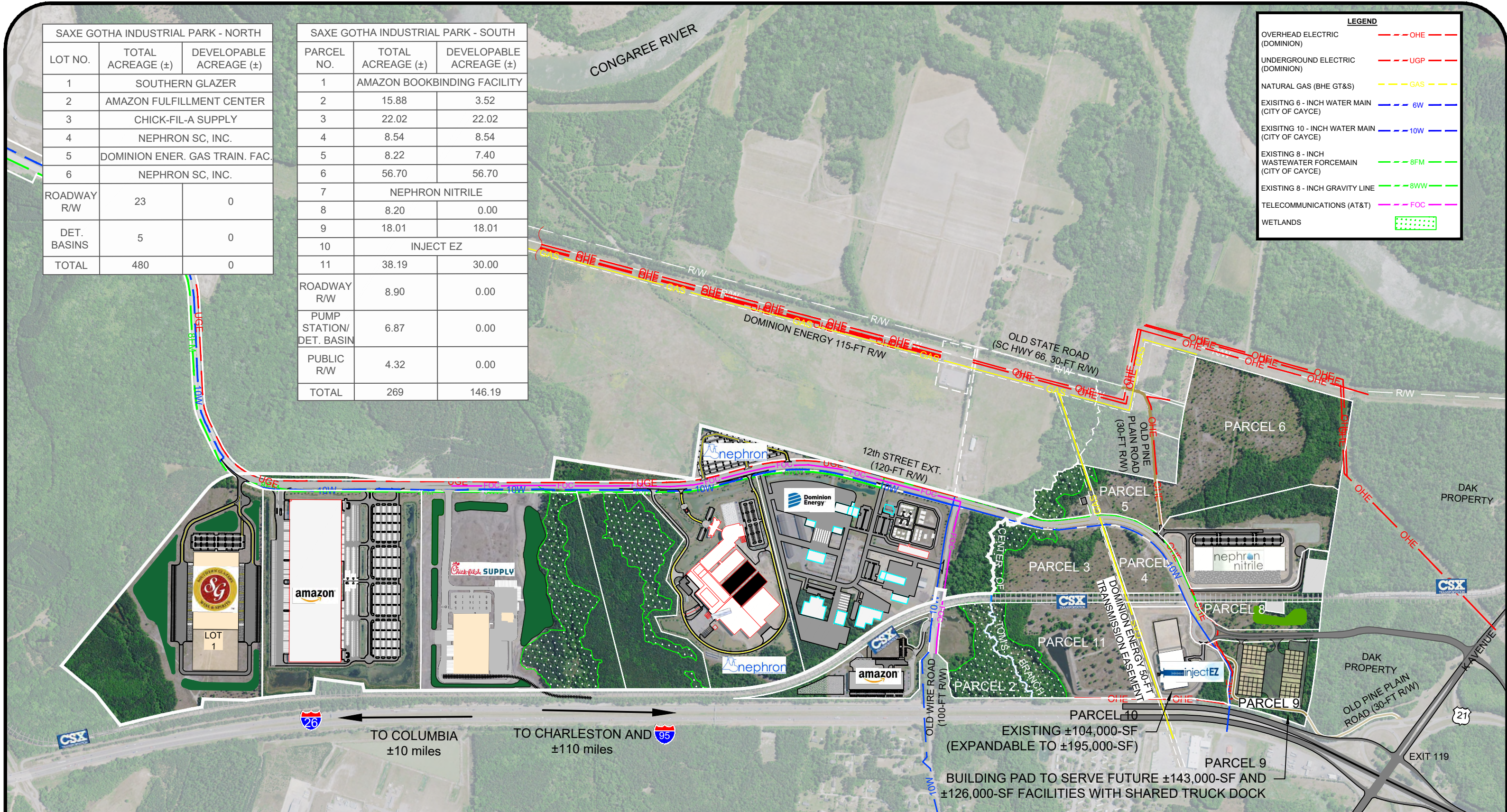


SAXE GOTHA INDUSTRIAL PARK - NORTH		
LOT NO.	TOTAL ACREAGE (±)	DEVELOPABLE ACREAGE (±)
1	SOUTHERN GLAZER	
2	AMAZON FULFILLMENT CENTER	
3	CHICK-FIL-A SUPPLY	
4	NEPHRON SC, INC.	
5	DOMINION ENER. GAS TRAIN. FAC.	
6	NEPHRON SC, INC.	
ROADWAY R/W	23	0
DET. BASINS	5	0
TOTAL	480	0

SAXE GOTHA INDUSTRIAL PARK - SOUTH		
PARCEL NO.	TOTAL ACREAGE (±)	DEVELOPABLE ACREAGE (±)
1	AMAZON BOOKBINDING FACILITY	
2	15.88	3.52
3	22.02	22.02
4	8.54	8.54
5	8.22	7.40
6	56.70	56.70
7	NEPHRON NITRILE	
8	8.20	0.00
9	18.01	18.01
10	INJECT EZ	
11	38.19	30.00
ROADWAY R/W	8.90	0.00
PUMP STATION/DET. BASIN	6.87	0.00
PUBLIC R/W	4.32	0.00
TOTAL	269	146.19

LEGEND	
OVERHEAD ELECTRIC (DOMINION)	--- OHE ---
UNDERGROUND ELECTRIC (DOMINION)	--- UGP ---
NATURAL GAS (BHE GT&S)	--- GAS ---
EXISTING 6 - INCH WATER MAIN (CITY OF CAYCE)	--- 6W ---
EXISTING 10 - INCH WATER MAIN (CITY OF CAYCE)	--- 10W ---
EXISTING 8 - INCH WASTEWATER FORCEMAIN (CITY OF CAYCE)	--- 8FM ---
EXISTING 8 - INCH GRAVITY LINE	--- 8WW ---
TELECOMMUNICATIONS (AT&T)	--- FOC ---
WETLANDS	[Green Dotted Pattern]



Master Development Plan ± 749-Acre Saxe Gotha Industrial Park Lexington County, South Carolina



Project No.: 19185-0032 (IN FEET)
October 24, 2023