

567

LEXINGTON AVENUE

NORTHEAST CORNER OF 50TH STREET
MIDTOWN EAST



SIZE: *Ground Floor - 787 SF*

FRONTAGE: *25' on Lexington
39' on 50th Street*

CEILING HEIGHT: *9.5'*

POSSESSION: *Immediate*

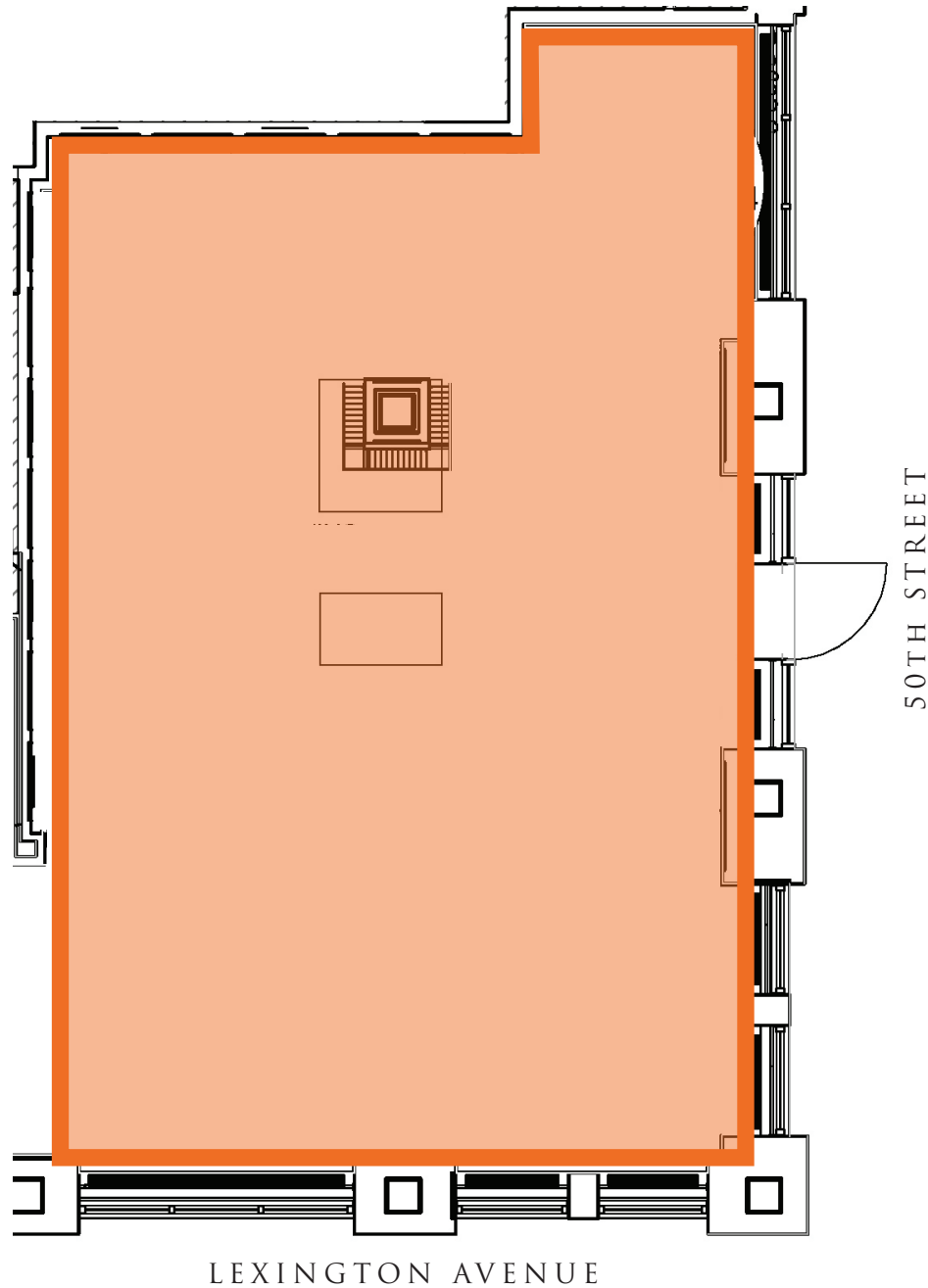
HIGHLIGHTS:

- At the base of The Benjamin Hotel, a 209 guest room hotel in the heart of Midtown East
- Adjacent to the 51st Street 6 Train
- Steps from Grand Central Terminal
- Surrounded by over 40 million square feet of office space
- Within close proximity to 60 hotels
- No food uses allowed

NEIGHBORING TENANTS:



FLOOR PLANS:
GROUND FLOOR - 787 SF



567

LEXINGTON AVENUE

NORTHEAST CORNER OF 50TH STREET
MIDTOWN EAST

FOR MORE INFORMATION,
PLEASE CONTACT:

ZACH NATHAN

240.731.8333 | ZNathan@ksrny.com



1385 Broadway, 22nd Floor | New York, NY 10018
212.417.9217

ksrny.com

All information supplied in this marketing presentation and/or flyer is from sources deemed reliable and is furnished subject to errors, omissions, modifications, removal of listings from sale/lease and to any listing condition. Any square footage, dimensions, floor plans and/or technical data set forth are approximations and are subject to further elaboration/confirmation.