

# 2020K







## CONFERENCE CENTER

SEATS UP TO 128 PEOPLE!

INTRODUCING **15,000 SF**  
OF BRAND NEW **AMENITY SPACE**



BRAND NEW **FITNESS**

RENO **COMPLETE**



2020**K**



BRAND NEW

# AMENITY FLOOR



Spa Locker Rooms

RENO COMPLETE

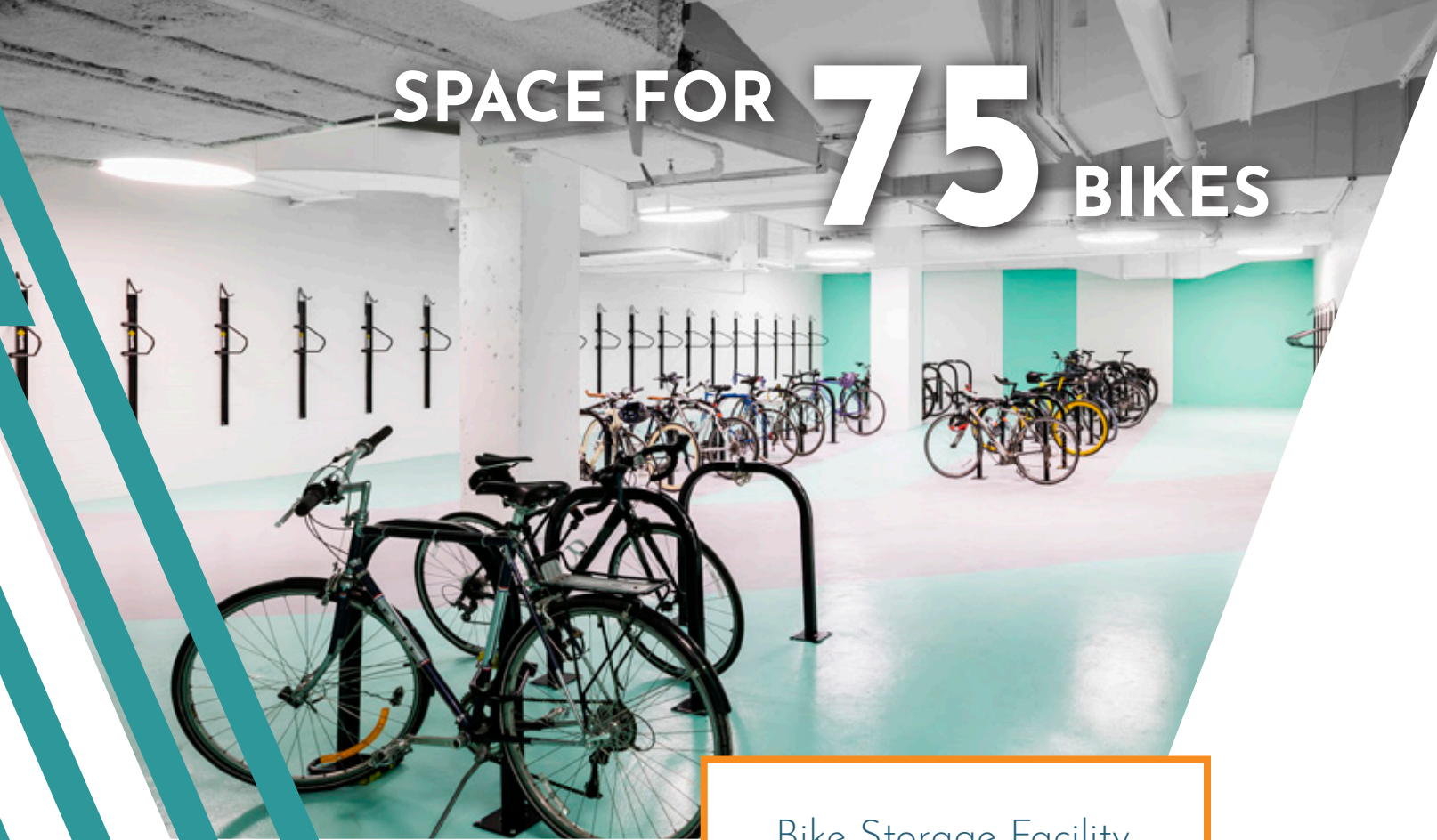


BRAND NEW  
**FITNESS CENTER**

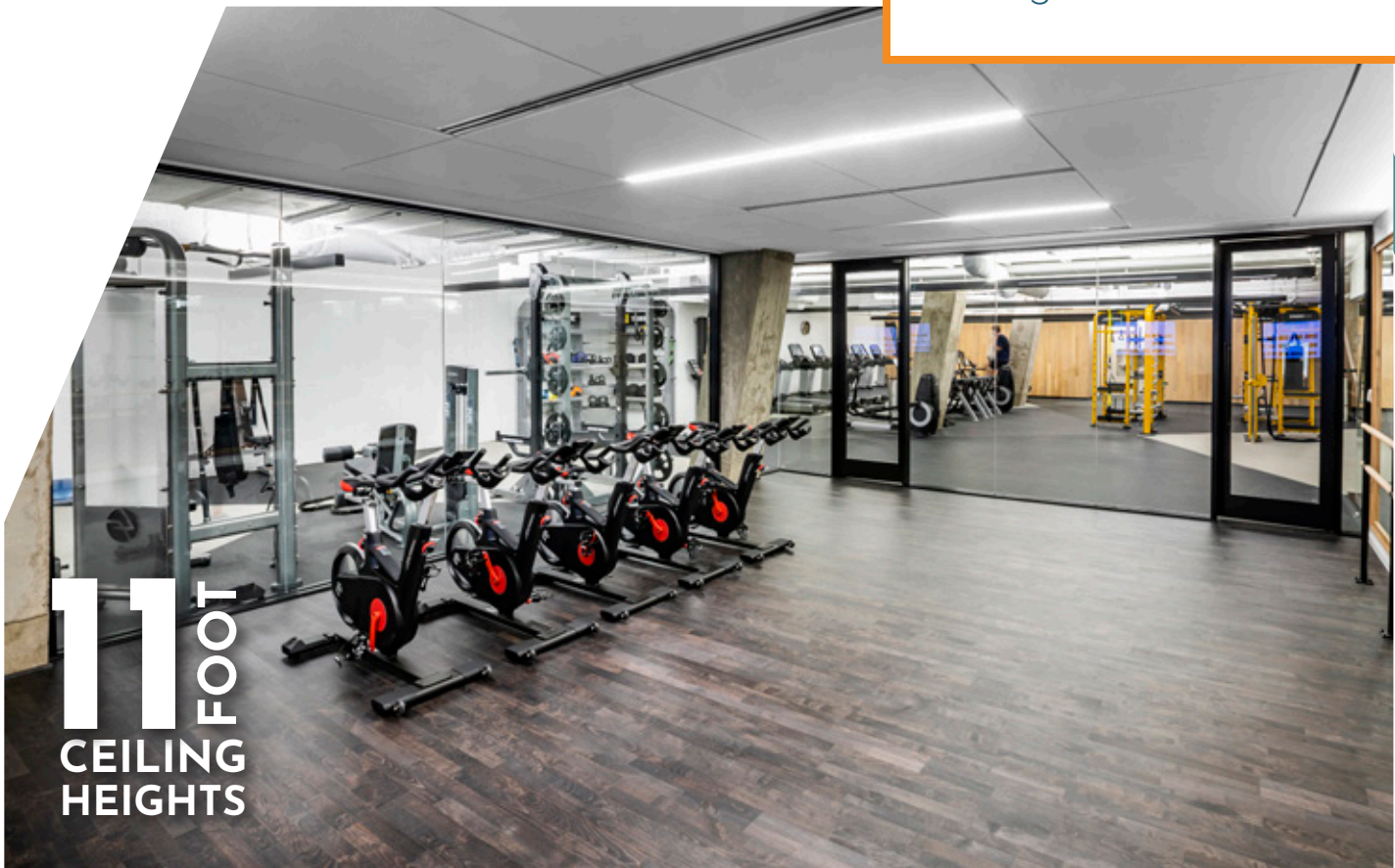
SPACE FOR **75** BIKES



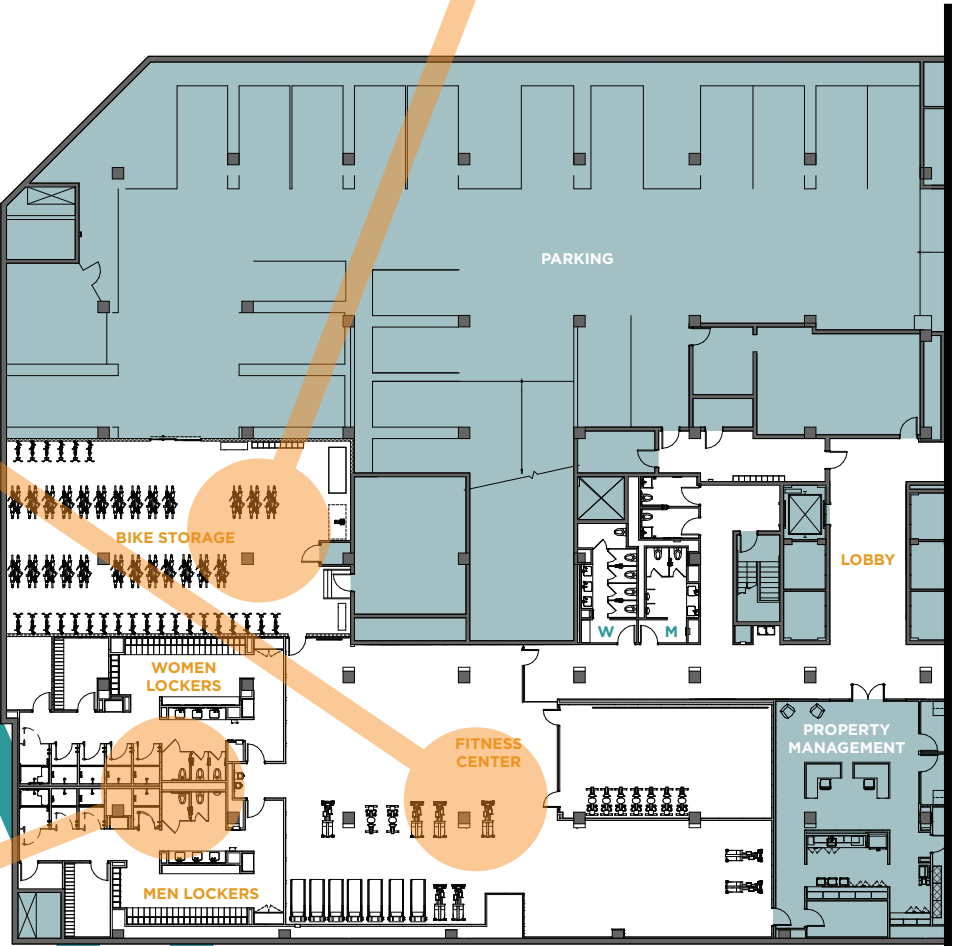
Huge Fitness Center



Bike Storage Facility



**11** FOOT  
CEILING  
HEIGHTS

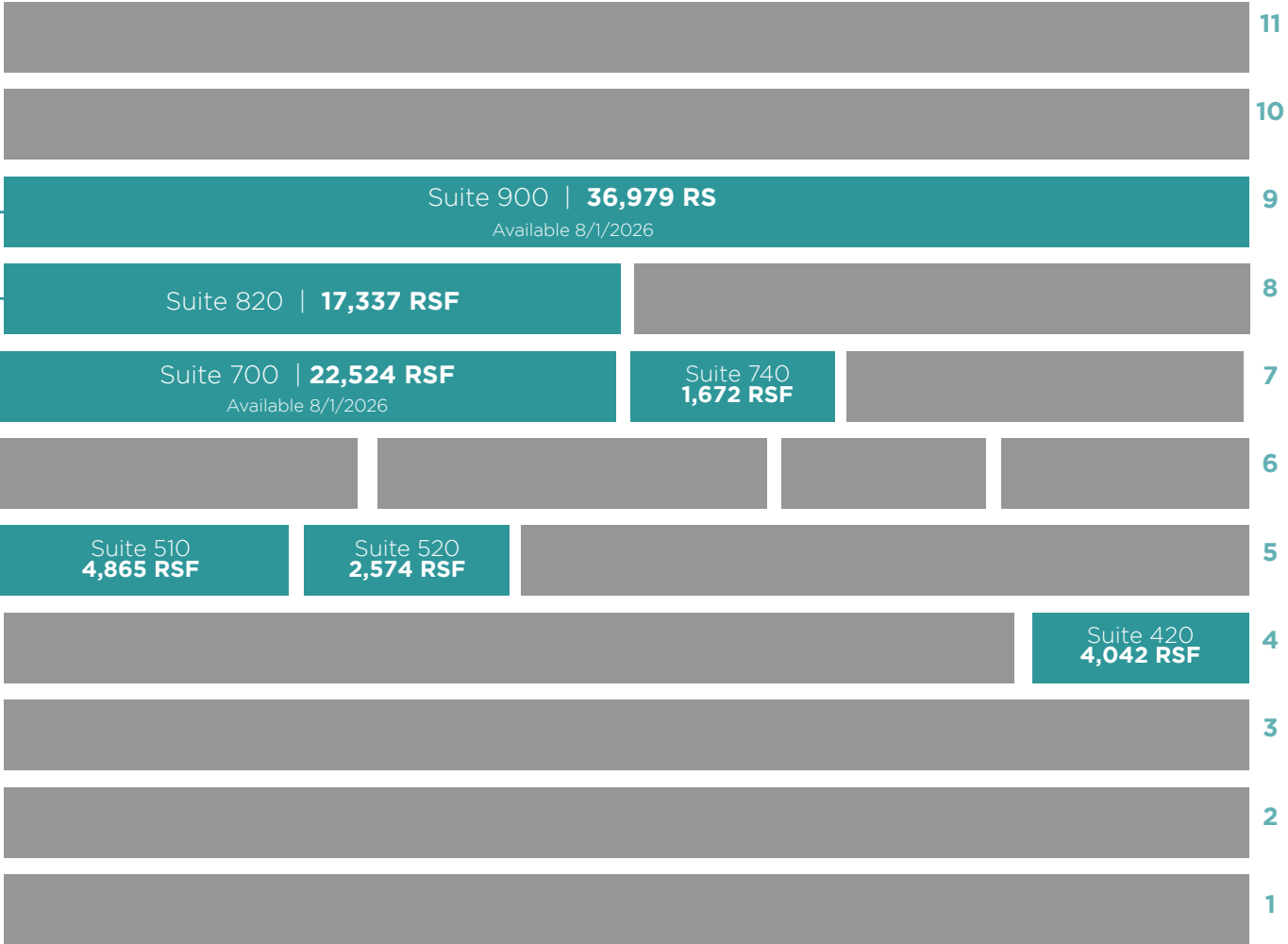


Spa Quality Locker Rooms

# AVAILABILITIES

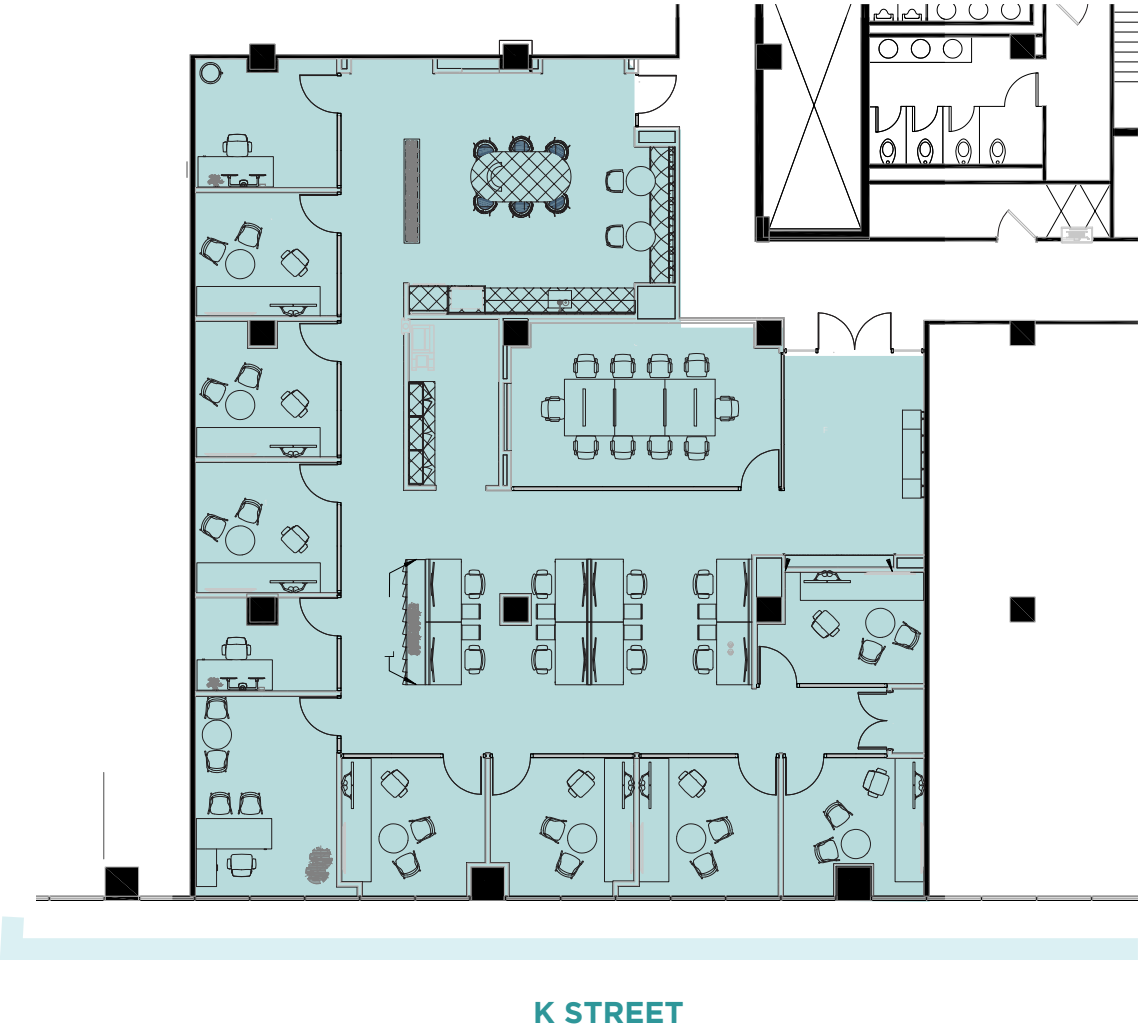
STACKING PLAN

Contiguous  
54,316 RSF

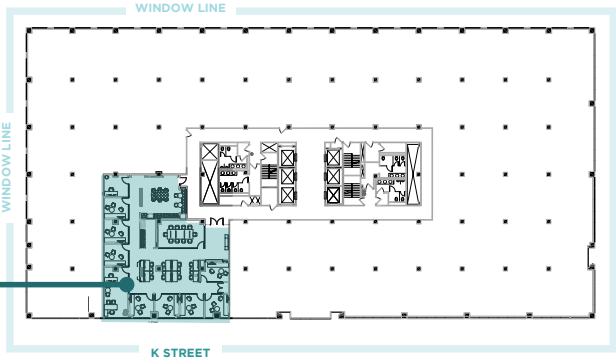


## 4<sup>TH</sup> FLOOR

4,042 RSF • SUITE 420



SUITE 420  
4,042 RSF



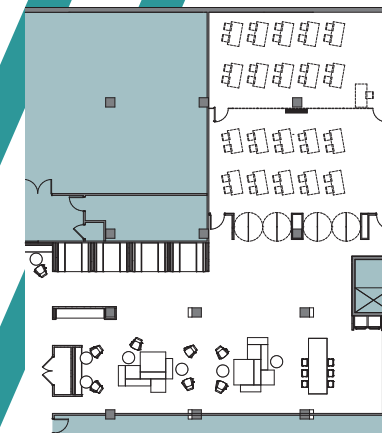


11 FOOT  
CEILING  
HEIGHTS

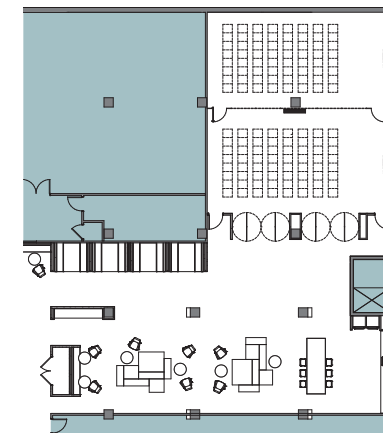
# BRAND NEW ENTERTAINMENT SPACE



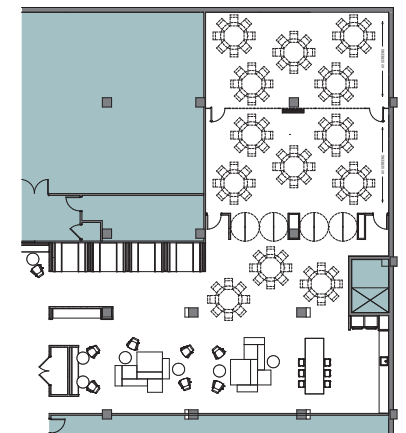
Lounge & Entertainment Area



TRAINING  
40 OCCUPANTS



LECTURE  
128 OCCUPANTS

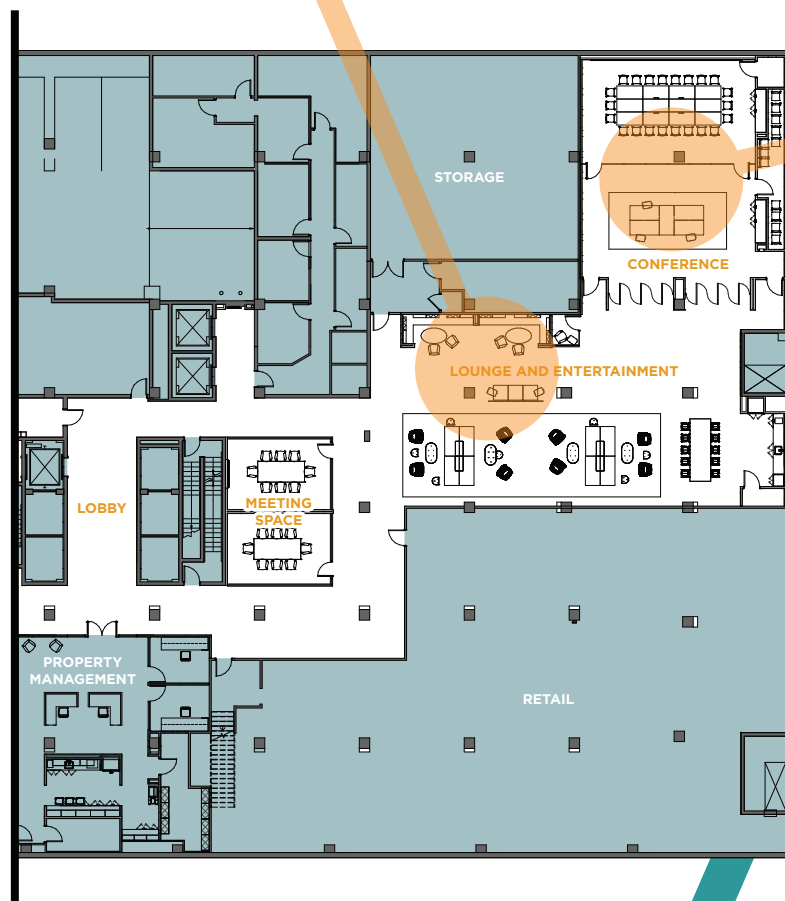


BANQUET  
80 OCCUPANTS

Conferencing



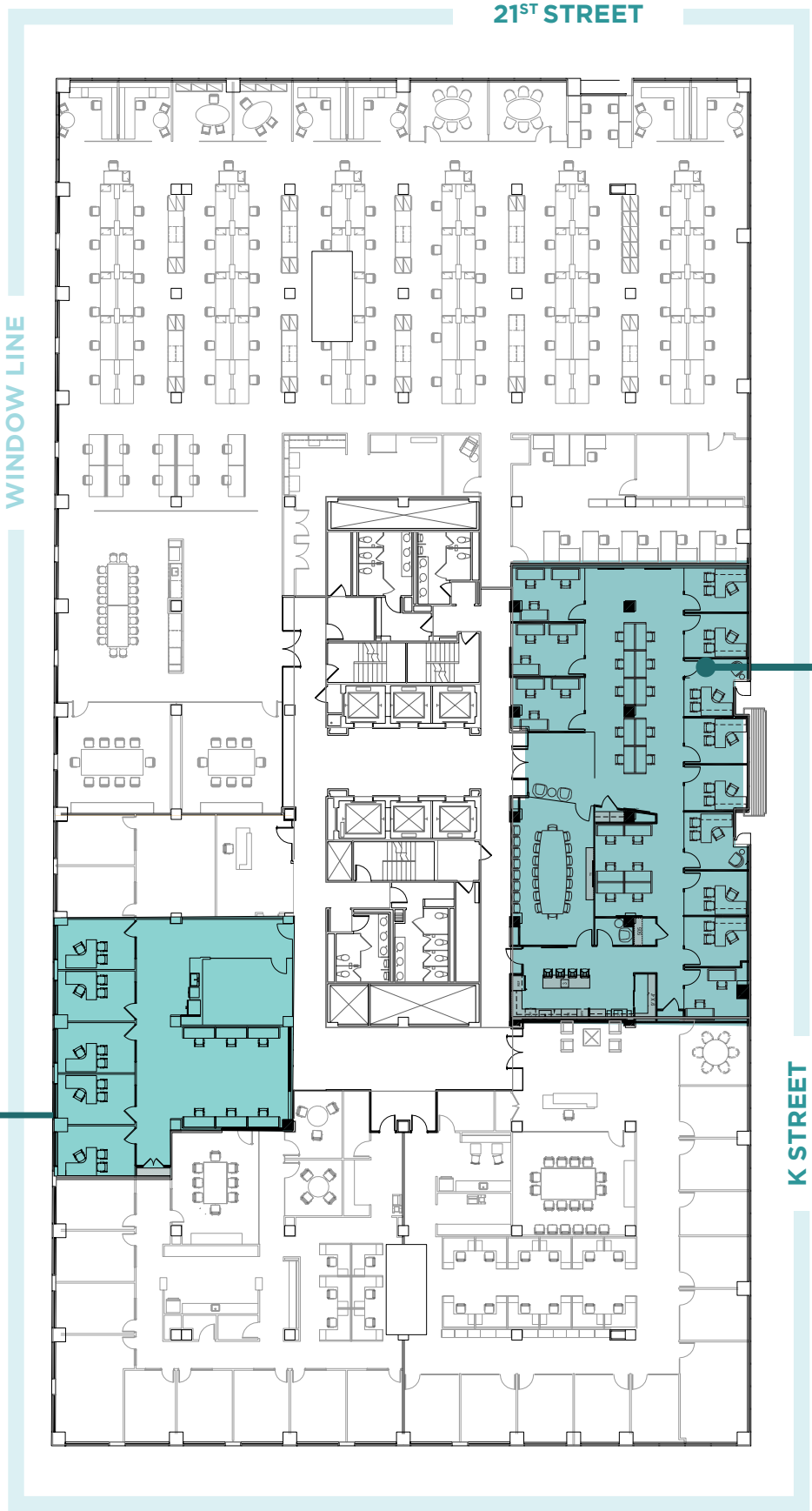
SEATS UP TO  
**128**  
PEOPLE





# 5<sup>th</sup> FLOOR

2,574 RSF | 4,865 RSF Available



SUITE 520  
2,574 RSF

SUITE 510  
4,865 RSF

Scan to view  
Suite 520!

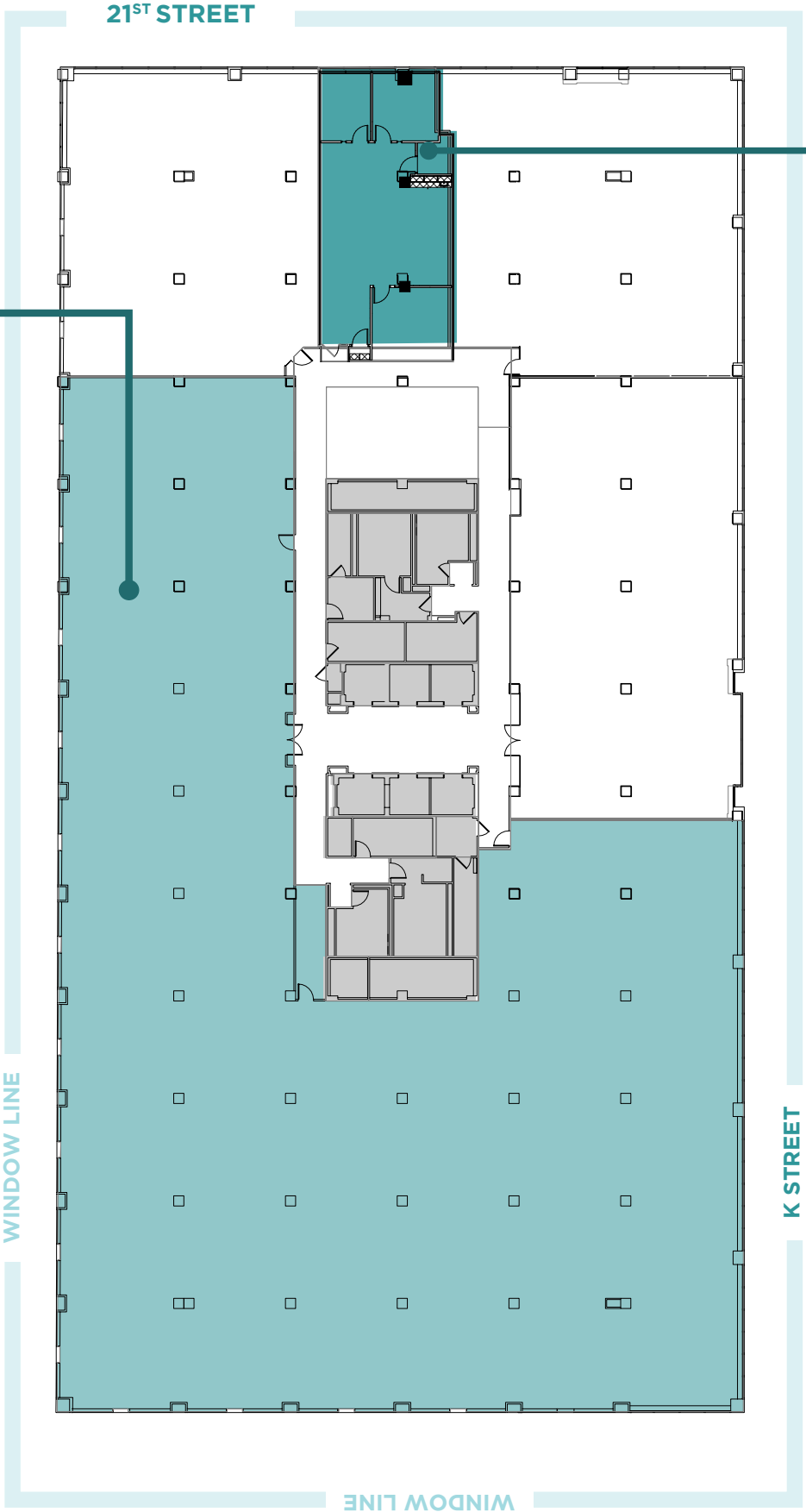


Scan to view  
Suite 510!



# 7<sup>th</sup> FLOOR

22,524 RSF | 1,672 RSF Available



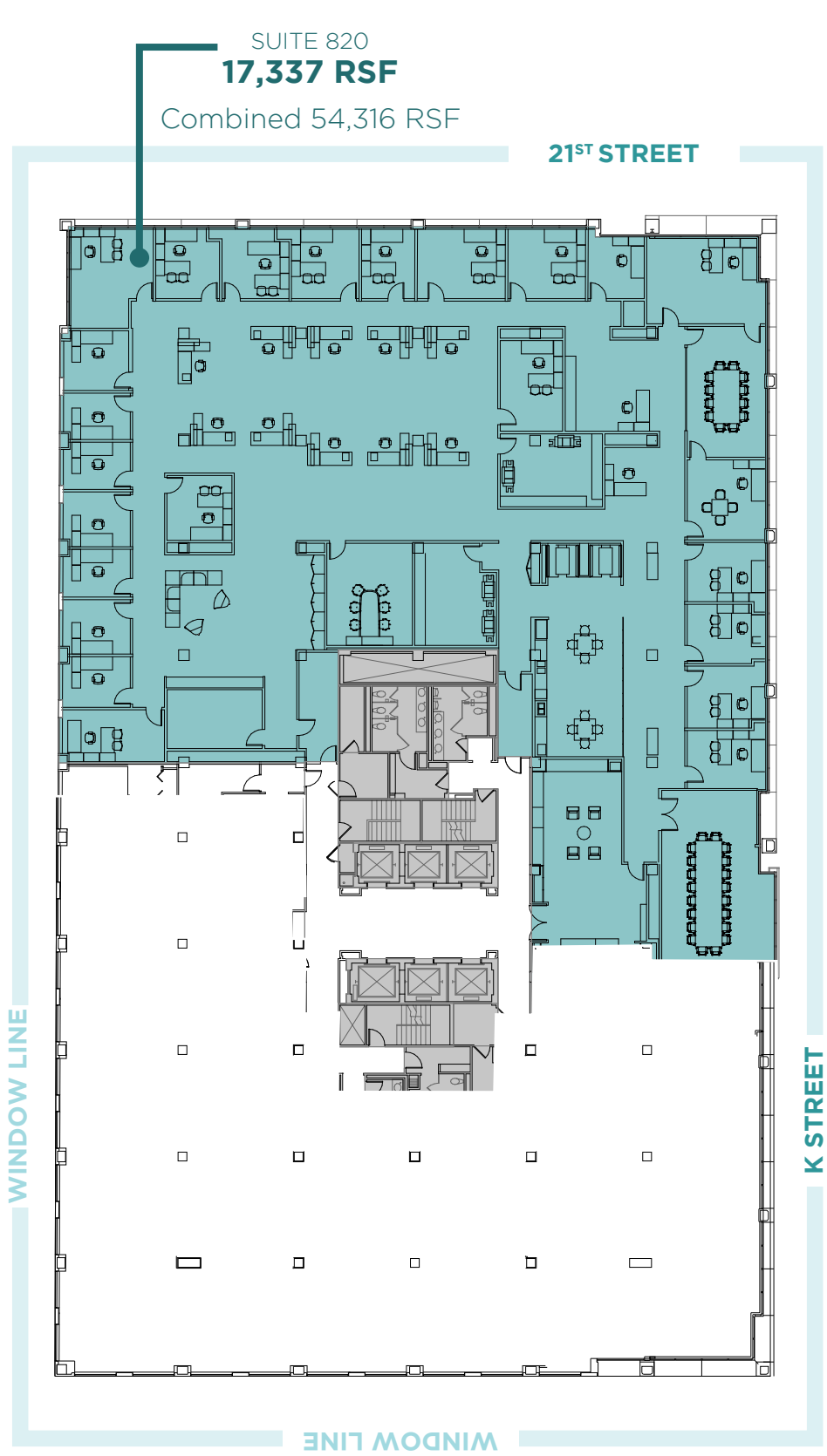
SUITE 700  
22,524 RSF  
AVAILABLE  
8/1/2026

SUITE 740  
1,672 RSF

WINDOW LINE

# 8<sup>TH</sup> FLOOR

17,337 RSF Available | Contiguous with 9th Floor

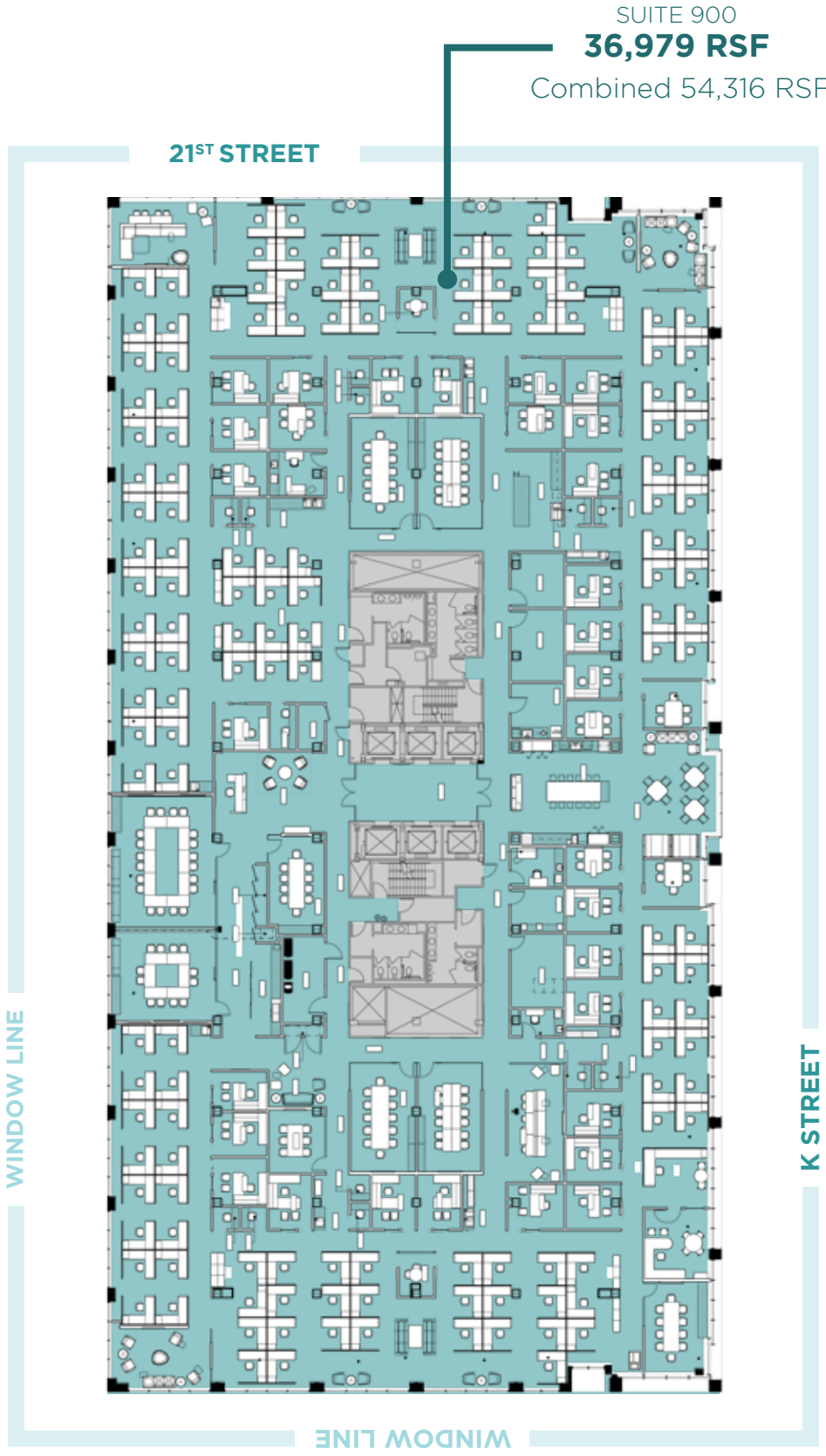


Scan to view Suite 820!



# 9<sup>TH</sup> FLOOR

36,979 RSF Available | Contiguous with 8th Floor





# NEWLY RENOVATED ROOFTOP!

Views of the National Cathedral!









# 2020K

[www.2020Koffices.com](http://www.2020Koffices.com)

**KRISTEN MATHIS**

202 719 5623

*kristen.mathis@jll.com*

**THOMAS MYERS**

202 719 5582

*thomas.myers@jll.com*

FOR LEASING INFORMATION

