

FOR SALE OR LEASE

# BROOKHOLLOW BUSINESS PARK

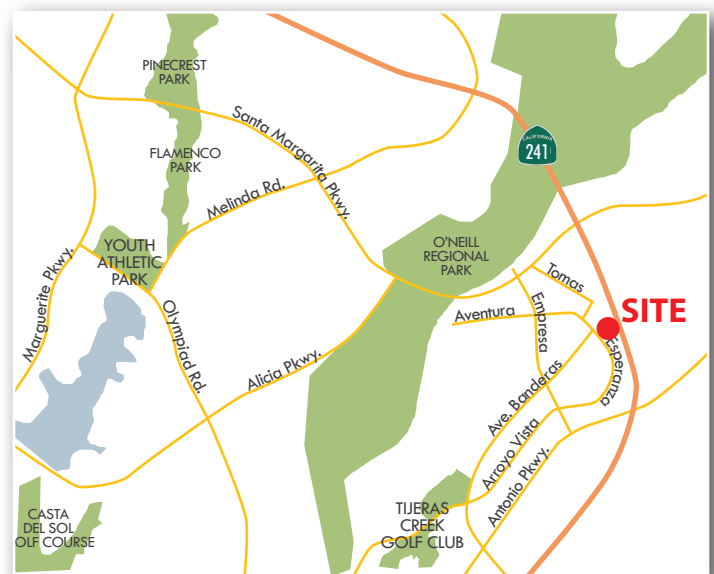
30402 Esperanza  
Rancho Santa Margarita, CA 92688

±12,000 SQUARE FOOT INDUSTRIAL BUILDING WITH POSSIBLE YARD AREA



## PROPERTY FEATURES:

- Freestanding, single-story industrial building
- ±4,500 SF of office space
- ±1,500 SF of lab/testing area
- One (1) ground level door
- Possible yard
- Built in 2002
- 3.2:1000 parking ratio
- 18' clear height
- 800 amps 480v \*Verify
- Excellent access to the 241 Toll Road



Exclusively Listed By:

**MARK JERUE**  
Senior Vice President  
License ID# 01073399  
949.790.3121  
mjerue@leeirvine.com

**CRAIG FITTERER**  
Senior Vice President  
License ID# 01246929  
949.790.3123  
cfitterer@leeirvine.com

**BJ FELL**  
Vice President  
License ID# 01929179  
949.790.3144  
bfell@leeirvine.com

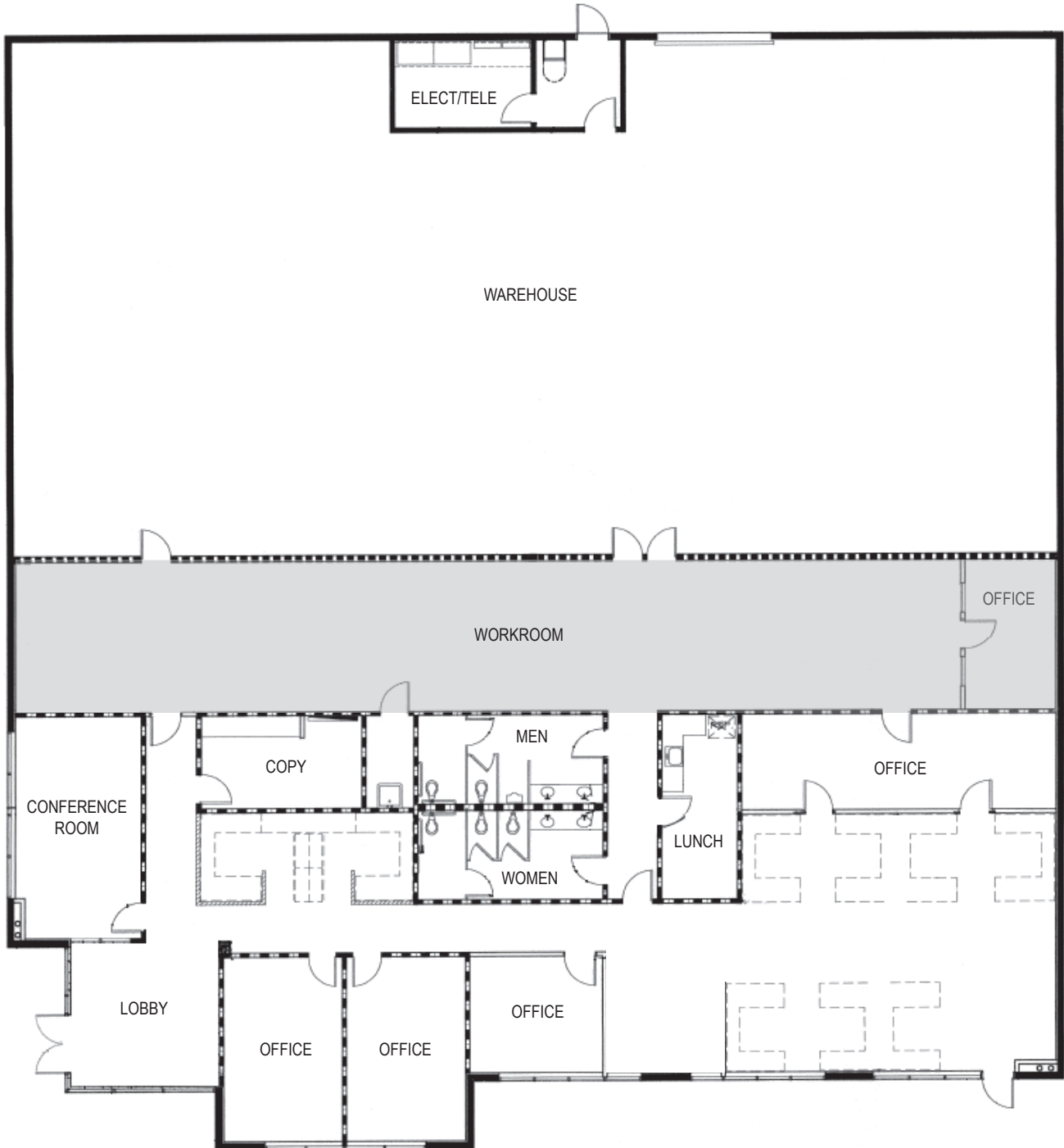
**GIANCARLO SPINOSI**  
Associate  
License ID# 02065254  
949.790.3109  
gspinosi@leeirvine.com



FOR SALE OR LEASE

**BROOKHOLLOW BUSINESS PARK**  
30402 Esperanza  
Rancho Santa Margarita, CA 92688

±12,000 SQUARE FOOT INDUSTRIAL BUILDING WITH POSSIBLE YARD AREA



Exclusively Listed By:

**MARK JERUE**  
Senior Vice President  
License ID# 01073399  
949.790.3121  
mjerue@leeirvine.com

**CRAIG FITTERER**  
Senior Vice President  
License ID# 01246929  
949.790.3123  
cfitterer@leeirvine.com

**BJ FELL**  
Vice President  
License ID# 01929179  
949.790.3144  
bfell@leeirvine.com

**GIANCARLO SPINOSI**  
Associate  
License ID# 02065254  
949.790.3109  
gspinosi@leeirvine.com

