



New Office Space for Lease

ARBORWALK PROFESSIONAL OFFICES
1309 SW ARBORWALK BOULEVARD, LEE'S SUMMIT, MISSOURI

Property Highlights

- 9,300 (±) office / medical office development
- Build-to-suit office finish
- 4,650 to 9,300 (±) sf available
- Great visibility and access to 150 Highway
- High-growth area
- Convenient location with all services nearby, banks, restaurants and shops
- Lease rate starting at \$23.50/sf

For information, please contact:

Bernell K. Rice
Director
t 816-268-4225
brice@nzimmer.com

1220 Washington Street, Suite 300
Kansas City, MO 64105

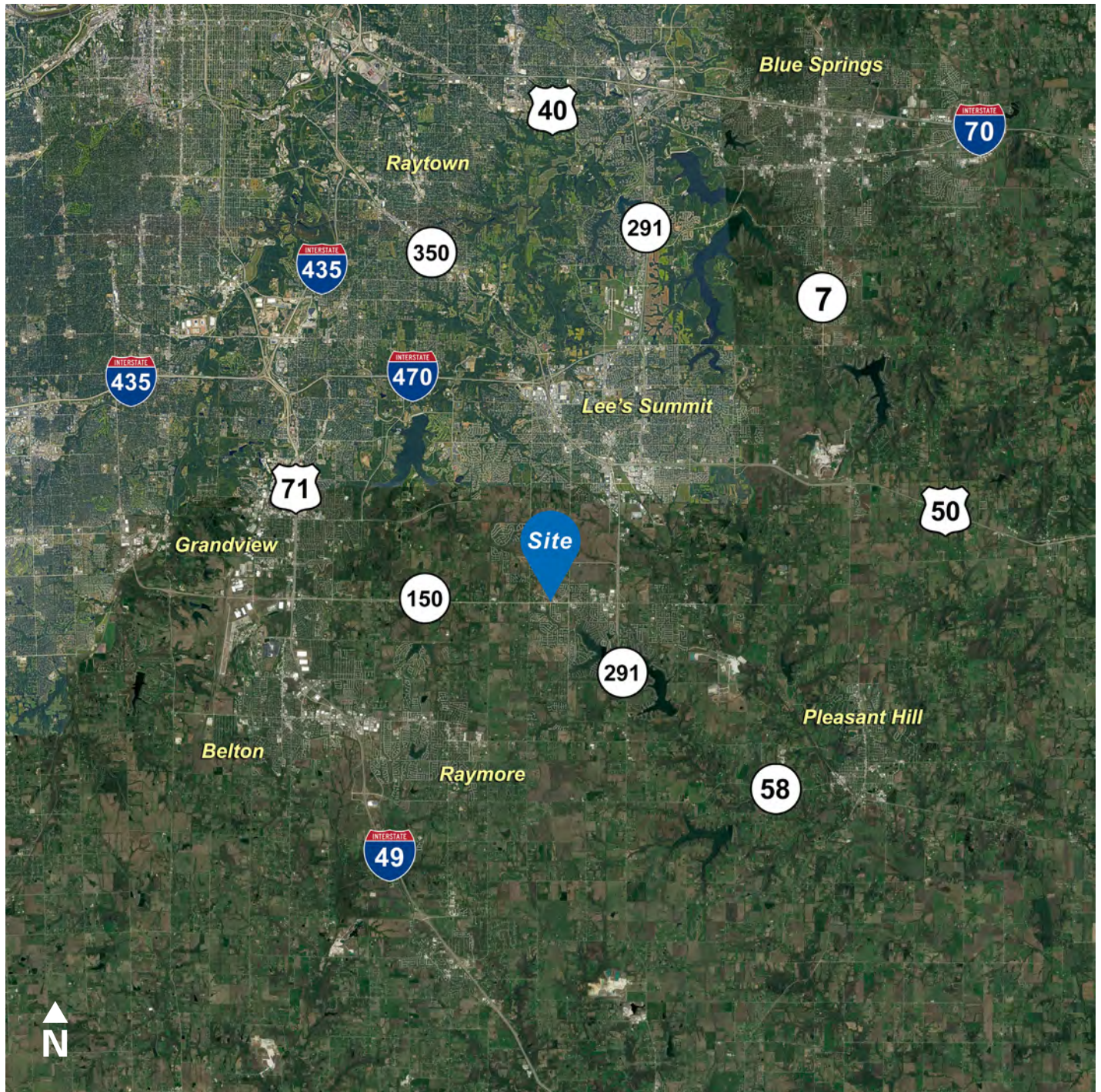
nmrkzimmer.com



NEWMARK
ZIMMER

The information contained herein has been obtained from sources deemed reliable but has not been verified and no guarantee, warranty or representation, either express or implied, is made with respect to such information. Terms of sale or lease and availability are subject to change or withdrawal without notice.

1309 SW ARBORWALK BOULEVARD, LEE'S SUMMIT, MISSOURI



CONTACT

Bernell K. Rice

Director

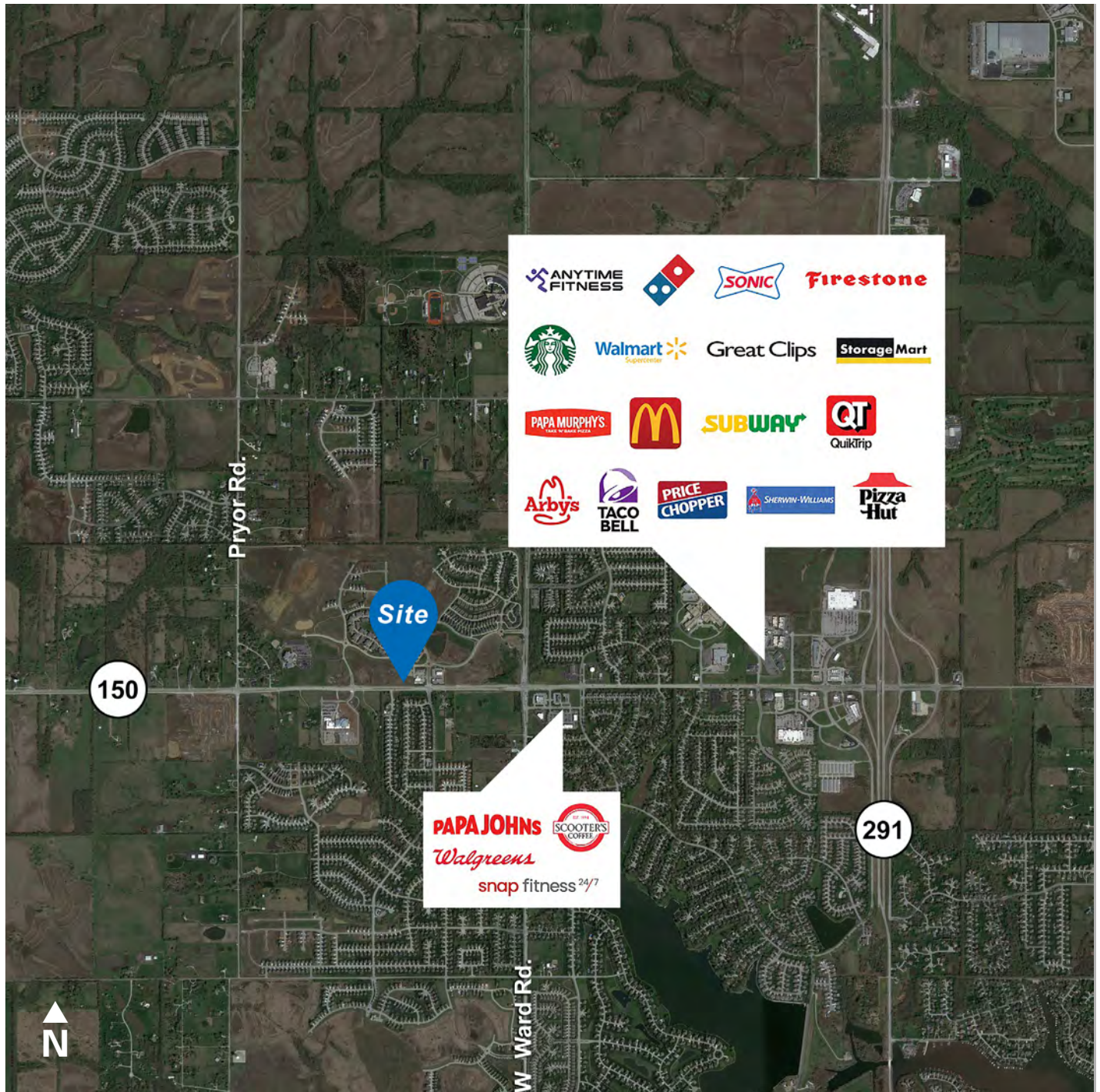
t 816-268-4225

brice@nzimmer.com

nmrkzimmer.com

NEWMARK
ZIMMER

1309 SW ARBORWALK BOULEVARD, LEE'S SUMMIT, MISSOURI



CONTACT

Bernell K. Rice

Director

t 816-268-4225

brice@nzimmer.com

nmrkzimmer.com

NEWMARK
ZIMMER