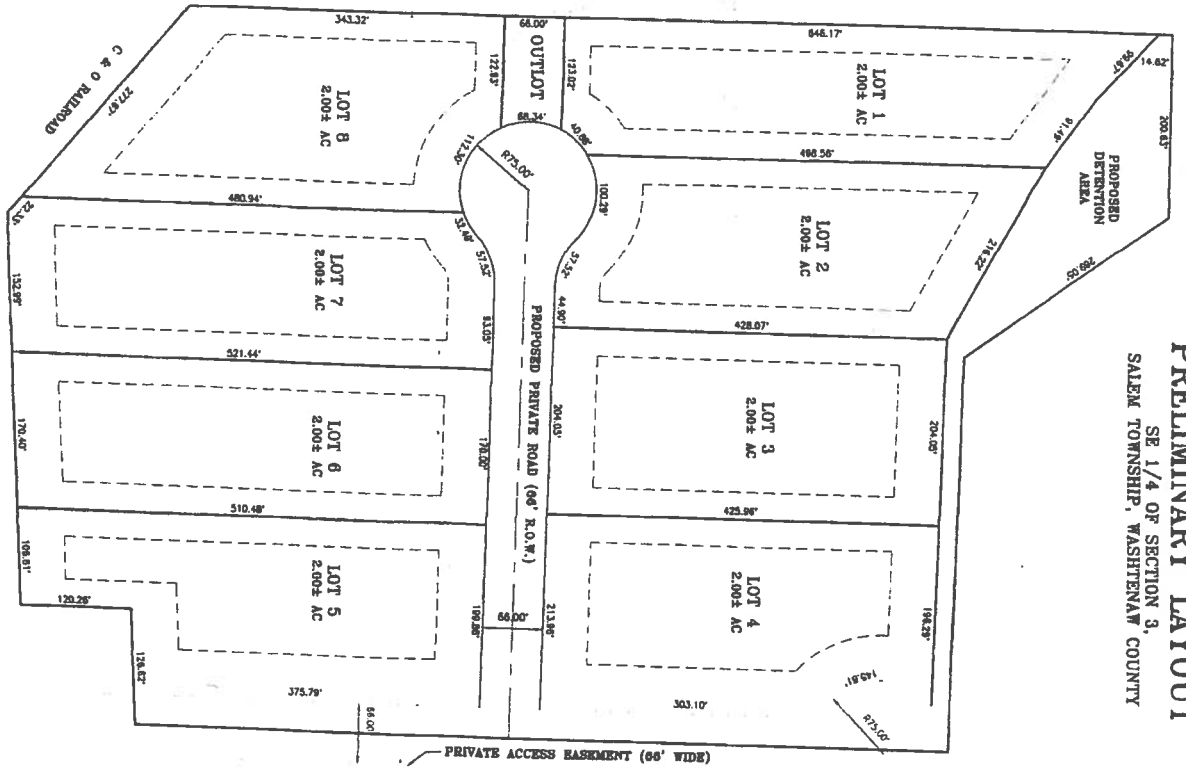


# SPLITS SUBJECT TO TOWNSHIP APPROVAL

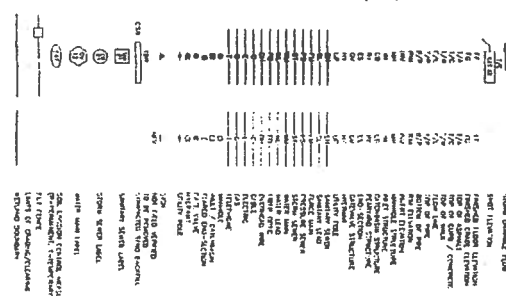


**PRELIMINARY LAYOUT**  
SE 1/4 OF SECTION 3,  
SALEM TOWNSHIP, WASHINGTON COUNTY



**SITE DATA AND REQUIREMENTS**  
 ZONE: R-1 (Residential Single-Family)  
 LOT AREA: 1.28 AC ±  
 LOT WIDTH: 112'-0"  
 LOT DEPTH: 112'-0"  
 STORMS: 1.5"  
 SLOPE: 2%  
 FIN. 10'

**LEGEND**



FOR SITE PLAN APPROVAL ONLY  
NOT FOR CONSTRUCTION

<p><b>PARCEL B</b> BOBINGTON 7888 6TH AVE SW BOBINGTON, MN 55007 PHONE: 763-444-7799</p>	<p><b>BOSS ENGINEERING</b> ENGINEERS • SURVEYORS • PLANNERS LANDSCAPE ARCHITECTS (763) 444-7799</p> <p>LANDSCAPE DESIGN OFFICE 1111 S. SHAWANEE AVE. SUITE 100, BOBINGTON, MN 55007 (763) 444-7799 FAX (763) 444-7799</p>	<p>We warrant and defend all of our professional services to the extent permitted by law. We shall not be liable for any damages, including reasonable attorneys' fees, arising out of or from the use of our services, whether or not such damages are caused in whole or in part by our negligence or the negligence of our employees, agents, or subcontractors. This limitation of liability shall not apply to the extent prohibited by law. The limitation of liability shall not apply to the extent prohibited by law. The limitation of liability shall not apply to the extent prohibited by law.</p>
<p><b>PRELIMINARY LAYOUT</b></p>		