

**GOBLE
PROPERTIES**

3301-3345


NEW DIMENSION ELECTRONICS
PCB & CABLE ASSEMBLY

3341 KELLER ST SANTA CLARA, CA

Industrial For Lease
2,400 SF

GOBLEPROPERTIES.COM



Contact Us

408-452-1754

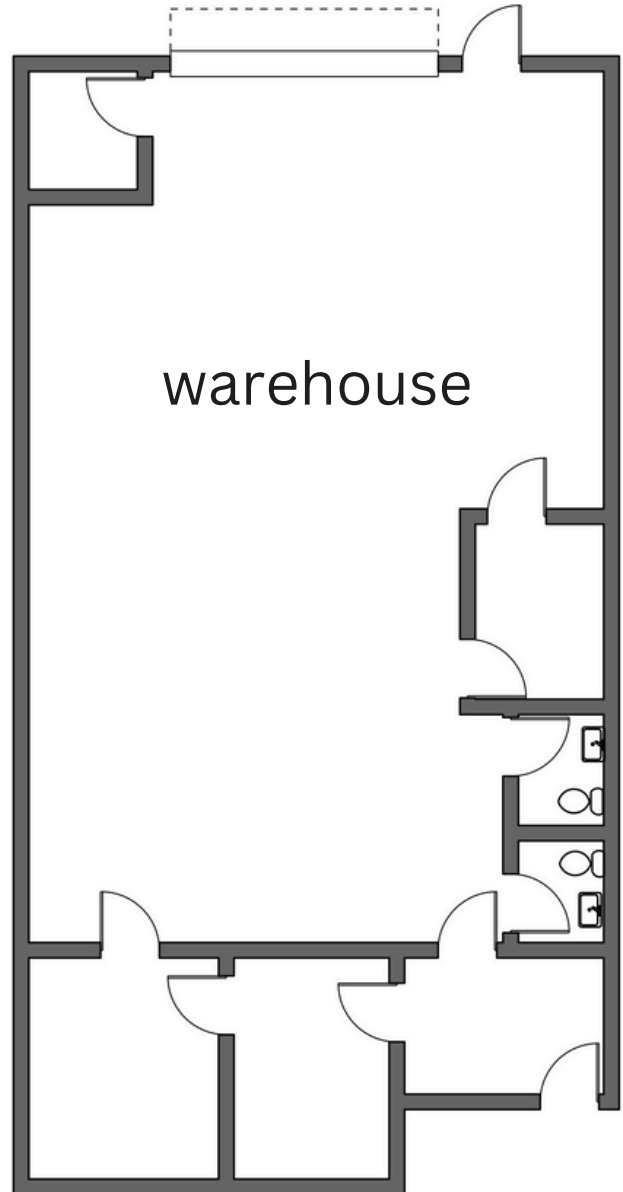
contact@gobleproperties.com

**3341 Keller Street
Santa Clara, California**



Unit Highlights

- 2,400 sq. ft.
- 100 Amps
- Grade Level Roll Up Door
- 2 Restrooms
- Lobby + 4 Private Offices
- HVAC in Offices
- 1:1 Parking





Contact Us

408-452-1754

contact@gobleproperties.com