

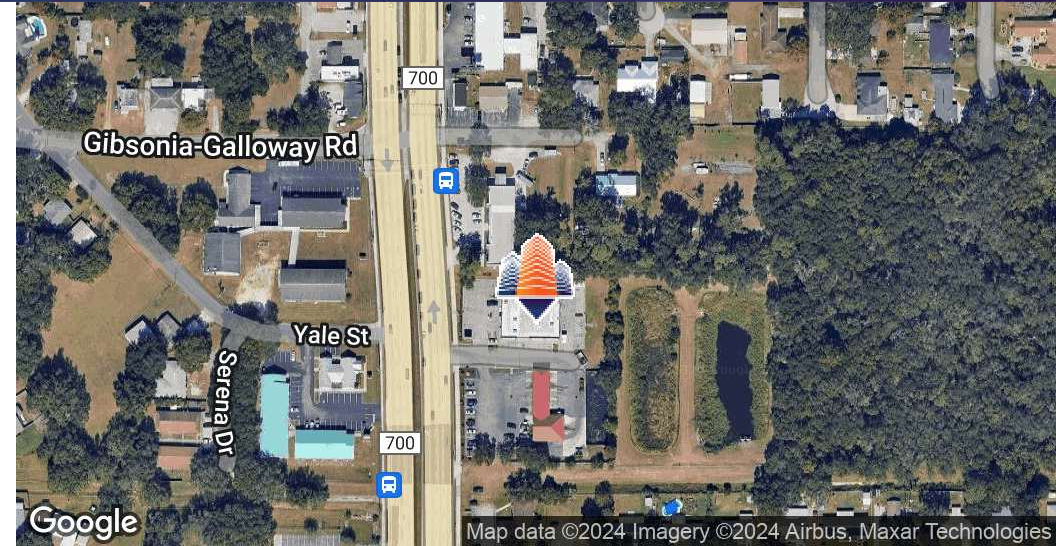
Lakeland Automotive Center

5421 US Highway 98, Lakeland, FL 33809



EQUITY
INVESTMENT
SERVICES

PROPERTY SUMMARY



PROPERTY HIGHLIGHTS

- 3,900 SF former auto repair shop
- 6 roll up doors
- Full circulation around the building
- Direct visibility to US Hwy 98
- Large Pylon Sign Available with top billing
- 54,500+ cars per day on US Hwy 98
- Call now for more information!

OFFERING SUMMARY

Lease Rate:	\$35.00 SF/yr (NNN)
Available SF:	3,900 SF
Lot Size:	+/- 1.03 Acres
Building Size:	7,900 SF

DEMOGRAPHICS	1 MILE	3 MILES	5 MILES
Total Households	3,966	23,887	42,960
Total Population	8,689	60,030	112,015
Average HH Income	\$83,200	\$79,914	\$76,574

Nick Barbato

954.579.2672

nbarbato@eisre.com

Casey Dorner

407.404.4017

cdorner@eisre.com



7575 Dr. Phillips Blvd, Ste 390

Orlando, FL 32819

www.eisre.com

Lakeland Automotive Center

5421 US Highway 98, Lakeland, FL 33809



EQUITY
INVESTMENT
SERVICES

PROPERTY PHOTOS



Nick Barbato

954.579.2672

nbarbato@eisre.com

Casey Dorner

407.404.4017

cdorner@eisre.com



7575 Dr. Phillips Blvd, Ste 390

Orlando, FL 32819

www.eisre.com

Lakeland Automotive Center

5421 US Highway 98, Lakeland, FL 33809



EQUITY
INVESTMENT
SERVICES

RETAILER MAP



Nick Barbato
954.579.2672
nbarbato@eisre.com

Casey Dornier
407.404.4017
cdornier@eisre.com



7575 Dr. Phillips Blvd, Ste 390
Orlando, FL 32819
www.eisre.com

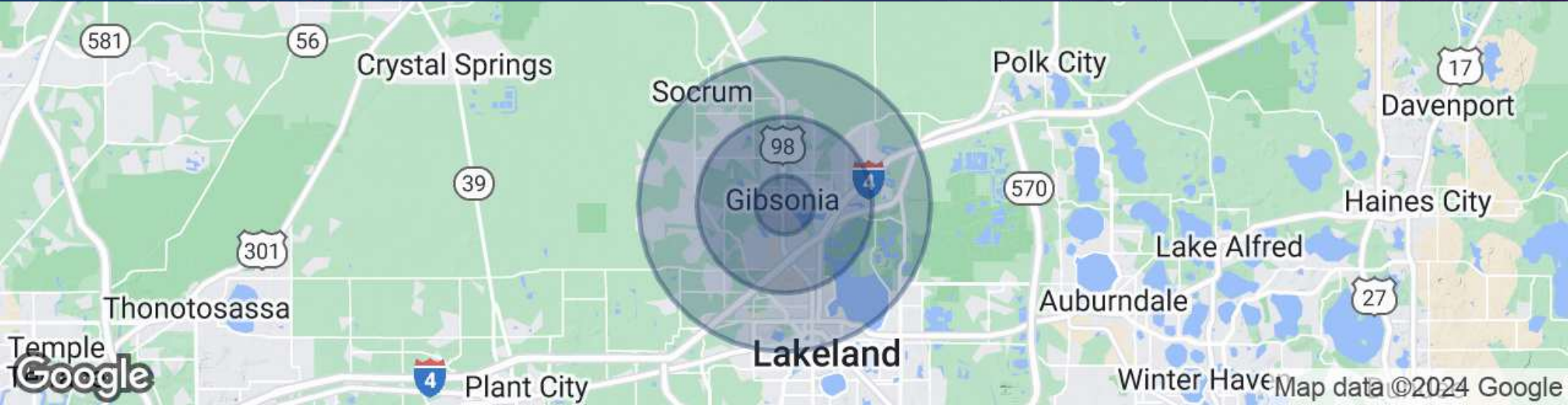
Lakeland Automotive Center

5421 US Highway 98, Lakeland, FL 33809



EQUITY
INVESTMENT
SERVICES

DEMOGRAPHICS MAP & REPORT



POPULATION	1 MILE	3 MILES	5 MILES
Total Population	8,689	60,030	112,015
Average age	43.5	41.6	38.9
Average age (Male)	41.5	38.7	36.3
Average age (Female)	46.0	44.2	41.0
HOUSEHOLDS & INCOME	1 MILE	3 MILES	5 MILES
Total households	3,966	23,887	42,960
# of persons per HH	2.15	2.48	2.57
Average HH income	\$83,200	\$79,914	\$76,574
Average house value	\$286,551	\$256,260	\$253,739

Nick Barbato

954.579.2672

nbarbato@eisre.com

Casey Dorner

407.404.4017

cdorner@eisre.com



7575 Dr. Phillips Blvd, Ste 390

Orlando, FL 32819

www.eisre.com