

5420 Corporate Blvd



Renovated Office Space in Corporate Blvd Corridor

5420 Corporate Blvd, Baton Rouge, LA 70808

Lease Brochure

Fabian H.C. Edwards, JD/DCL
985-974-8301
fedwards@elifinrealty.com



Property Summary

Fabian H.C. Edwards, JD/DCL
985-974-8301
fedwards@elifinrealty.com



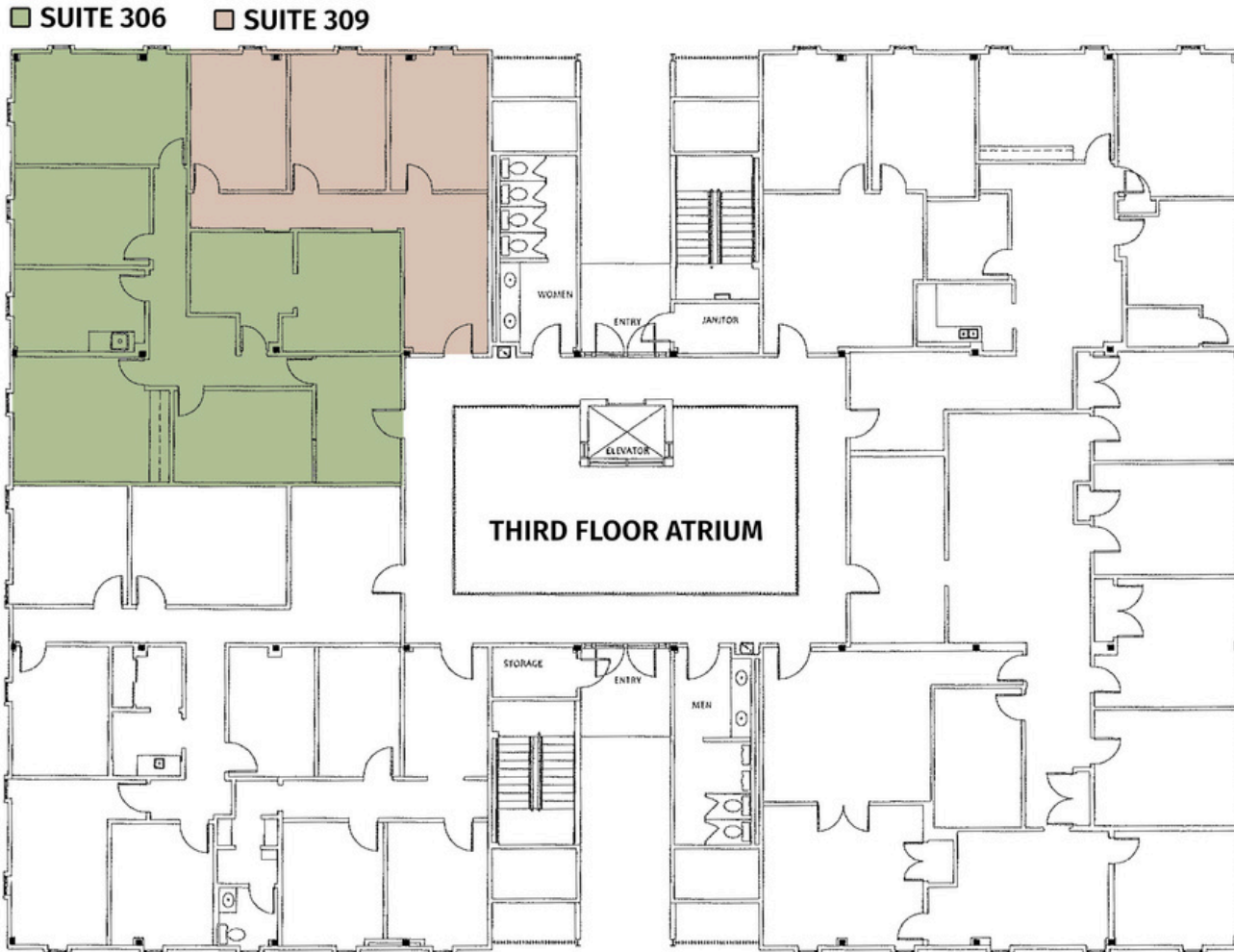
The Offering



- **Now available for lease**, 5420 Corporate Blvd is a multi-tenant office building situated on one of Baton Rouge's most desirable roadways, offering excellent accessibility.
- Only 1 suite remains in the building, Suite 306.
- Full service lease type includes utilities and janitorial in the rental rate.
- Strategically located seconds from retail hotspots and the interstate, this property ensures that tenants have quick access to various parts of Baton Rouge, including nearby Interstate 10 and College Drive.
- The surrounding Corporate Blvd corridor is bustling with activity, housing numerous other office buildings and a vibrant array of restaurants and bars, ideal for business and client entertainment.
- Tenants responsible for data/wifi within their suite.



Available Spaces

Fabian H.C. Edwards, JD/DCL
 985-974-8301
 fedwards@elifinrealty.com



	Suite	Size (SF)	Lease Type	Rate	Monthly Rent
	Suite 306	1,545	Full Service	\$17.00/SF/YR	\$2,189 / Month
	Suite 309	1,063	Full Service	\$17.00/SF/YR	\$1,505 / Month

Sample Interior Photos

Fabian H.C. Edwards, JD/DCL
985-974-8301
fedwards@elifinrealty.com



5420 Corporate Blvd, Baton Rouge, LA 70808

Broker of Record, Mathew Laborde; Licensed by the Louisiana Real Estate Commission and the Mississippi Real Estate Commission. This information has been secured from sources we believe to be reliable, but we make no representations or warranties, expressed or implied, as to the accuracy of the information. References to square footage or age are approximate. Buyer must verify the information and bears all risk for any inaccuracies.

Exterior Photos

Fabian H.C. Edwards, JD/DCL
985-974-8301
fedwards@elifinrealty.com



5420 Corporate Blvd, Baton Rouge, LA 70808

Broker of Record, Mathew Laborde; Licensed by the Louisiana Real Estate Commission and the Mississippi Real Estate Commission. This information has been secured from sources we believe to be reliable, but we make no representations or warranties, expressed or implied, as to the accuracy of the information. References to square footage or age are approximate. Buyer must verify the information and bears all risk for any inaccuracies.



5420 Corporate Blvd, Baton Rouge, LA 70808

Broker of Record, Mathew Laborde; Licensed by the Louisiana Real Estate Commission and the Mississippi Real Estate Commission. This information has been secured from sources we believe to be reliable, but we make no representations or warranties, expressed or implied, as to the accuracy of the information. References to square footage or age are approximate. Buyer must verify the information and bears all risk for any inaccuracies.

Broker Contact

Fabian H.C. Edwards, JD/DCL
985-974-8301
fedwards@elifinrealty.com



Fabian H.C. Edwards, JD/DCL

Senior Associate - Office Sales & Leasing

fedwards@elifinrealty.com

Direct: 985-974-8301

Office: 800-890-9329



Greater Baton Rouge, LA

640 Main St, Suite A
Baton Rouge, LA 70801

Greater New Orleans, LA

3340 Severn Ave, Suite 115
Metairie, LA 70002

Greater Lafayette, LA

606 Lee Ave
Lafayette, LA 70501

