



159,380 SF For Lease

7150 Alcovy Rd | Covington, GA 30014

Stephen Bridges, SIOR
C: 404.909.1560
stephen@onpacepartners.com

Nat Weikert
C: 678.575.4607
nat.weikert@onpacepartners.com

Katy Washington
C: 404.271.1862
katy.washington@onpacepartners.com

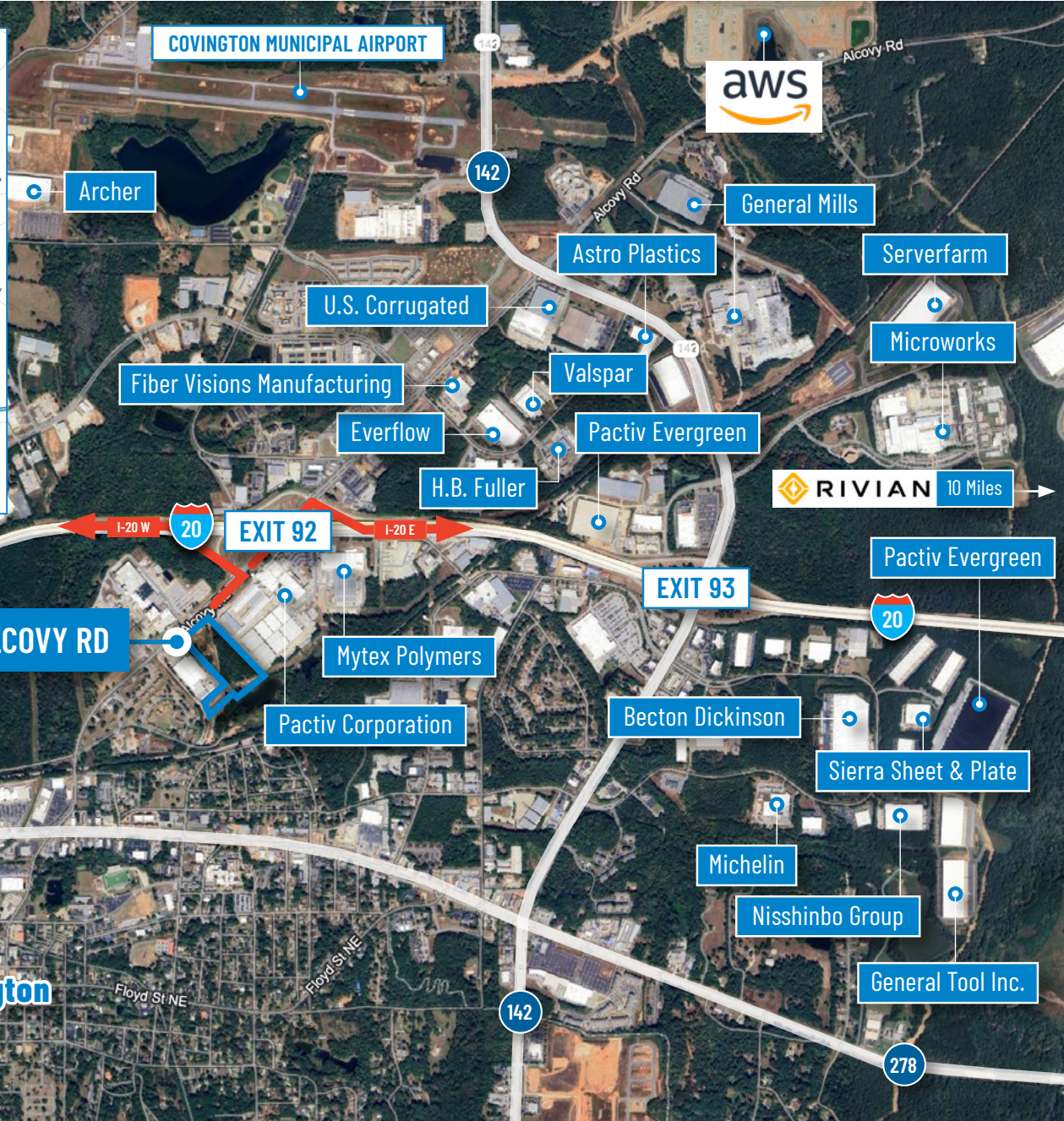
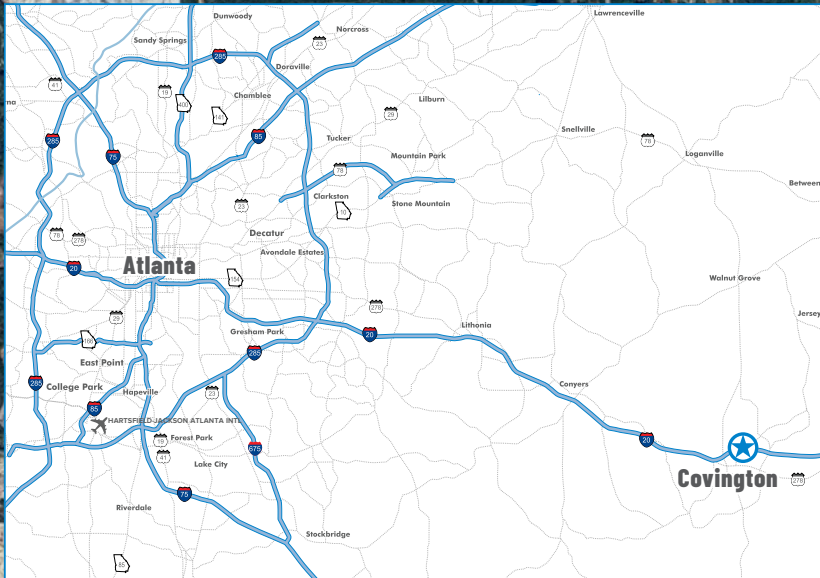
Jack Albert
C: 214.733.2161
jalbert@crowholdings.com

John Bateman
P: 404.665.9997
jbateman@crowholdings.com

**CROW
HOLDINGS**
DEVELOPMENT

 **ONPACE**

Geographical Highlights



KEY DISTANCES	
> I-20	0.3 MILES
> I-285	25 MILES
> AIRPORT	44 MILES
> SAVANNAH	220 MILES

Amenities and Tax Credits



Job Tax Credits

7150 Alcovy Road is in the 2025 Tier 2 Less Developed Census Tract (LDCT) offering \$3,000 per new Job. If a business hires 50 new employees the tax savings are \$150,000 per year or \$750,000 over 5 years.

For more information please go to:

<https://dca.georgia.gov/financing-tools/incentives/job-tax-credits>

TIER	JOB TAX CREDIT \$ (FOR 5 YEARS)	MINIMUM NEW JOBS	CREDIT ALLOWANCES	CARRY FORWARD
2	\$3,000*	10	100% of tax liability	5 years

Differences in Property Taxes (2025 data)

FEATURE	ROCKDALE COUNTY	NEWTON COUNTY
County Millage Rate (2025)	18.284 mills (decreased)	8.242 mills (slightly reduced from 2024)
School Millage Rate (2025)	~20 mills	15.5 mills (decreased from 2024)

Stephen Bridges, SIOR
C: 404.909.1560
stephen@onpacepartners.com

Nat Weikert
C: 678.575.4607
nat.weikert@onpacepartners.com

Katy Washington
C: 404.271.1862
katy.washington@onpacepartners.com

Jack Albert
C: 214.733.2161
jalbert@crowholdings.com

John Bateman
P: 404.665.9997
jbateman@crowholdings.com