

229 E 2ND ST

FOR SALE OR LEASE

SIZE (approx.)

Ground Floor: **400 SF**

Selling Lower Level: **1,500 SF**

TERM

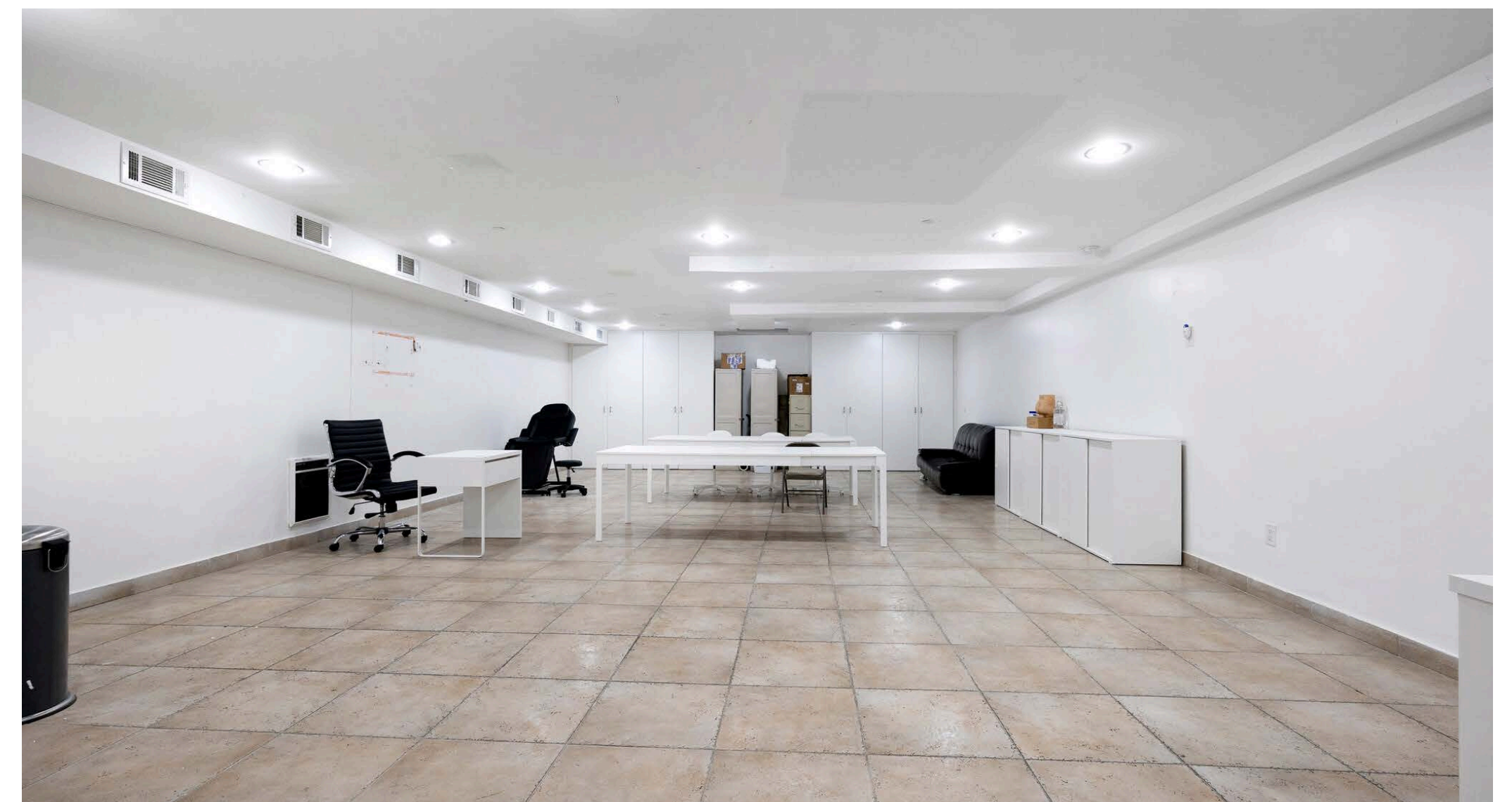
FLEXIBLE

TRANSPORTATION

J M Z

HIGHLIGHTS

- For Sale or Lease
- New Boutique Condo
- Elevator Access
- 3 Separate Entrances to the Lower Level
- Ground / Lower can be leased together or separately
- Central AC/Heat
- 12 Ft. Frontage
- Fully Sprinklered with Sink & Bathroom
- Ideal For Medical, Office, Gallery, Daycare, School
- Popups Considered
- Located in the heart of Alphabet City & The East Village on 2nd Street between Avenue B and C



For more information please contact:

JUSTIN KAMALI **JEREMY KAMALI**

516-306-2518

646-450-5985

justin@j3k.com

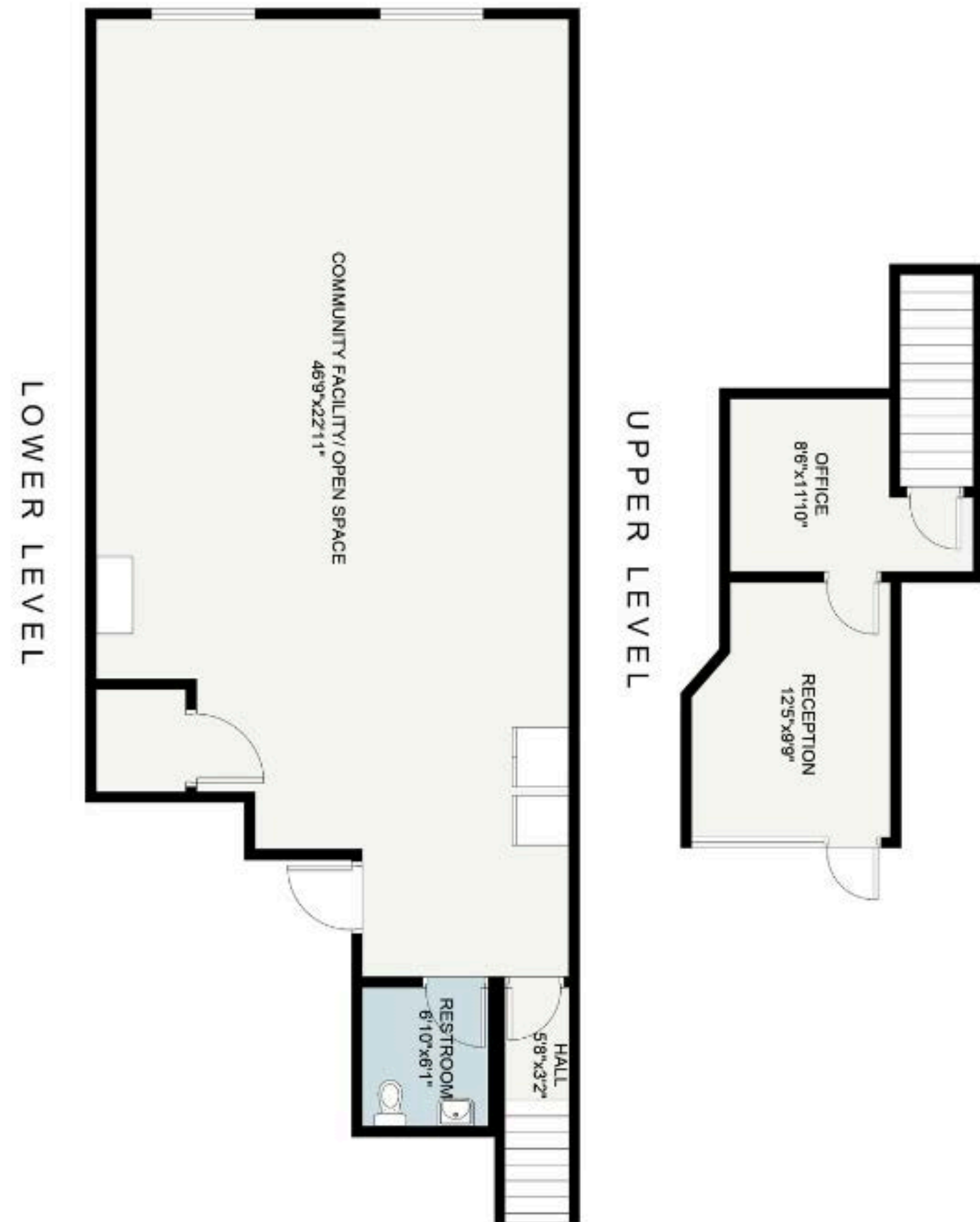
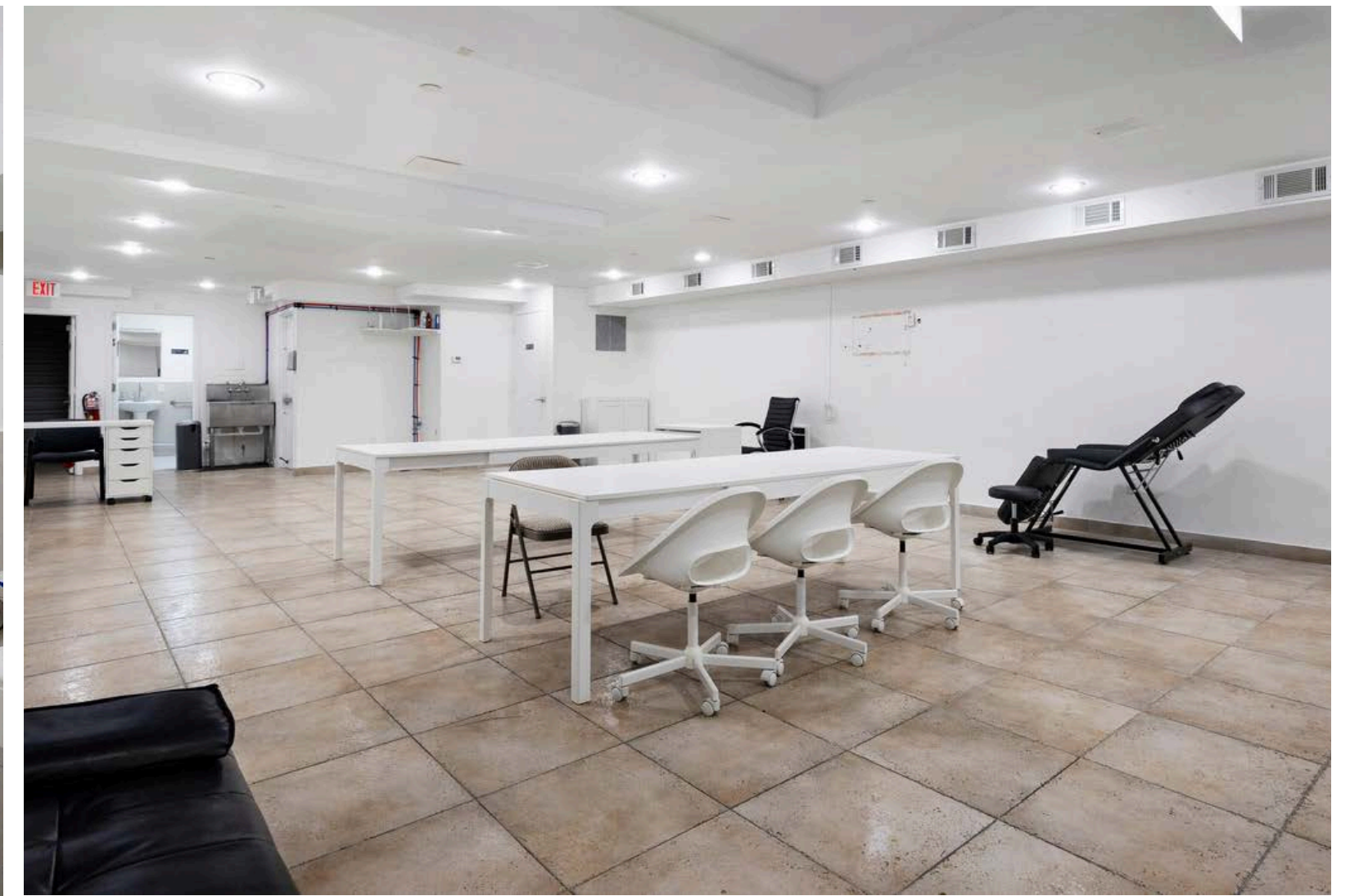
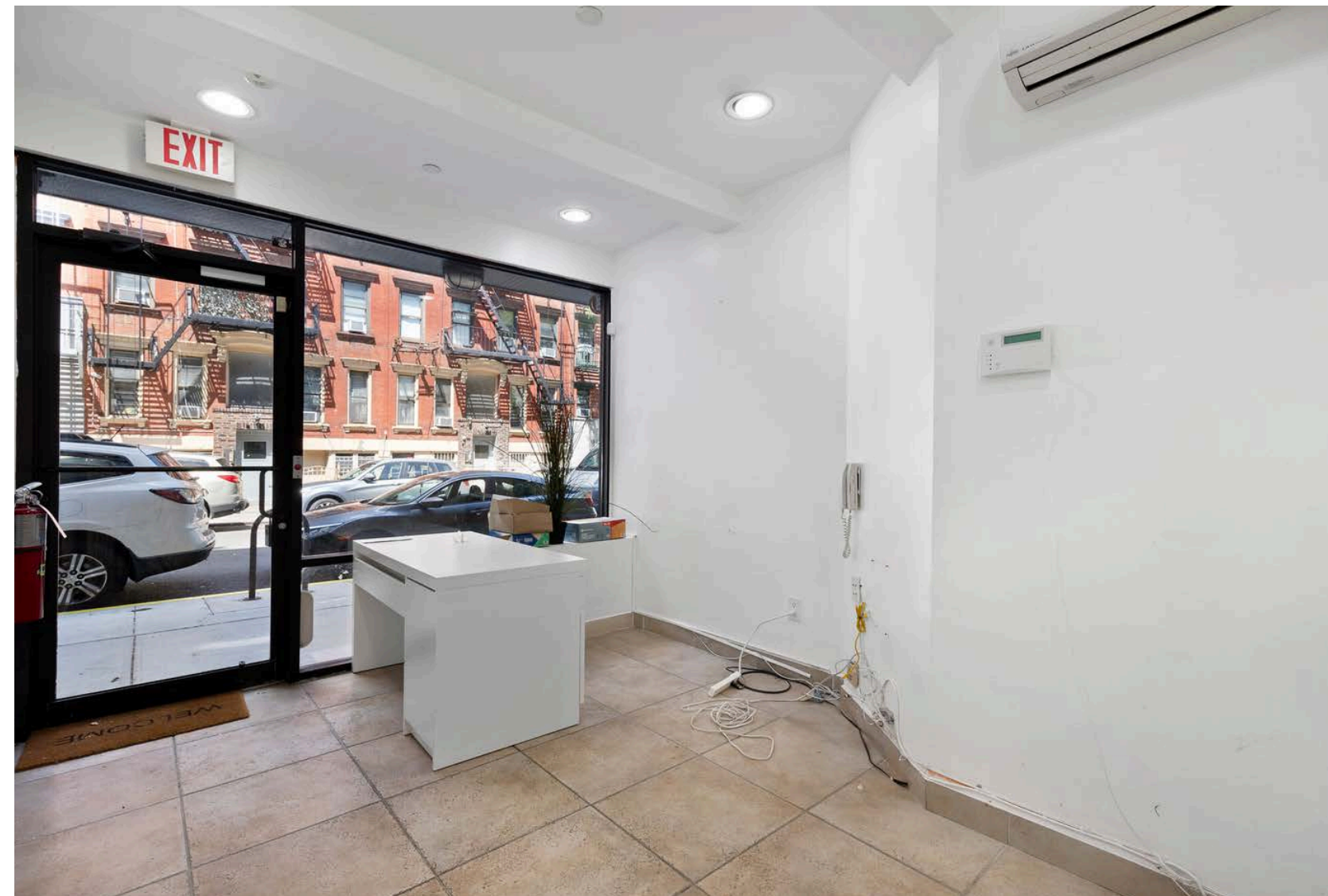
jeremy@j3k.com



WWW.J3K.COM

229 E 2ND ST

BETWEEN AVE B AND C



For more information please contact:

JUSTIN KAMALI **JEREMY KAMALI**

516-306-2518

646-450-5985

justin@j3k.com

jeremy@j3k.com



WWW.J3K.COM