

COMMERCIAL LAND FOR SALE

2733 Route 17M

Town of Goshen, NY | Orange County



Zoned Industrial District (I)

Parcel outline is approximate.

8.0+ ACRE SITE FOR SALE

Highlights

- Located off Route 17M in the Town of Goshen, this 8.0+ acre parcel is ideal for industrial use.
- The site offers quick access to major highways, including **Rt-17** (2 miles), **I-84** (5 miles), and **I-87** (10 miles).
- Zoned **I – Industrial District**, this property allows for flexible uses such as warehousing, manufacturing, or distribution.
- Click [HERE](#) for Town of Goshen Zoning regulations.

Location Highlights:

Route 17: ±1.5 miles
Interstate 87 (I-87): ±8 miles
Interstate 84 (I-84): ±12.5 miles
Stewart Airport (SWF): ±14.5 miles
New Jersey State Line: ±19.5 miles
New York City (Manhattan): ±56 miles
Port of Newark (NJ): ±62 miles
Albany, NY: ±102 miles

For more Information contact:

JAMES DESIMONE, SIOR
Associate Real Estate Broker
+1 845 596 9092
jdesimone@pyramidbrokerage.com

356 Meadow Avenue, 2nd Floor
Newburgh, New York 12550
+1 845 522 5900
pyramidbrokerage.com

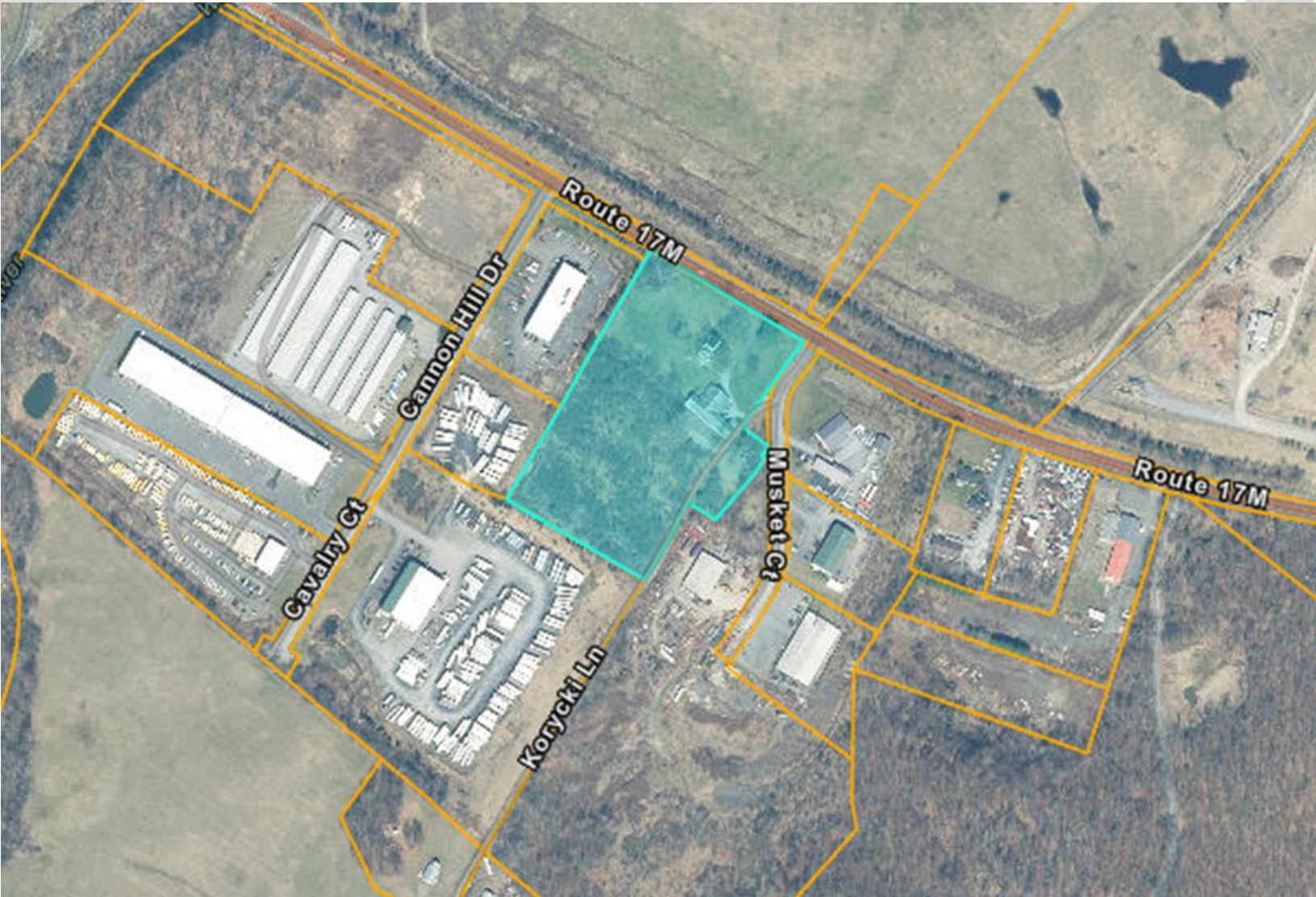
COMMERCIAL LAND FOR SALE

2733 Route 17M

Town of Goshen, NY | Orange County



Area Aerial Overview & Demographics



Demographic Summary	1 Mile	5 Miles	10 Miles
Population	613	63,745	134,031
Households	129	23,687	48,091
Average H.H. Income	\$208,592	\$111,942	\$127,501

Source: ESRI forecast for 2024

For more Information contact:

JAMES DESIMONE, SIOR
Associate Real Estate Broker
+1 845 596 9092
jdesimone@pyramidbrokerage.com

356 Meadow Avenue, 2nd Floor
Newburgh, New York 12550
+1 845 522 5900
pyramidbrokerage.com