

Country Club Plaza North

**18600-18760 NW 67th Avenue
Miami, FL 33015**



Bruce Shweky

Triple Net Commercial Real Estate Services, LLC
18520 NW 67th Avenue, Unit 311

Miami, FL 33015

(954) 214-4493

bruce@tncre.net



Country Club Plaza North

\$35.00 /SF/YR

Country Club Plaza North Prime Retail Space Available. This 79,003 square foot shopping center is well located in the Miami Lakes/Country Club of Miami area on 9 acres with abundant parking. Benefits include: Adjacent to Publix and Sedano's, centralized location, excellent retail mix and its proximity to the area's major schools. The center is extremely well planned astride the area's two major arteries. Join Denny's, Planet Fitness, Metro by T-Mobile, Taco Bell, Burger King, Pearl Vision, Dollar General, Dunkin Donuts and many more! Northwest corner of Ludlam Road (NW 67th Avenue) &...

- Join Planet Fitness, Denny's, Metro by T-Mobile, Dominos, Subway, Dollar General, Pearle Vision, Dunkin Donuts, Burger King and Taco Bell
- Retail Space Available



FOR LEASE—Miami Lakes
MEDICAL SPACE AVAILABLE
4,200 sf available
COUNTRY CLUB PLAZA NORTH
RECENTLY RENOVATED



- JOIN DENNY'S, PLANET FITNESS, DOLLAR GENERAL, BURGER KING, DUNKIN DONUTS, TACO BELL, PEARLE VISION, SUBWAY, METRO BY T-MOBILE AND DOMINOS!
- LOCATED AT THE NWC OF MIAMI GARDENS DRIVE (NW 186 ST) & LUDLAM ROAD (NW 67 AVE), ACROSS FROM PUBLIX AND SEDANOS!
- 3 MILE RADIUS: POPULATION 164,000; AVERAGE HOUSEHOLD INCOME \$75,000 AVERAGE HOME VALUE \$285,000; TRAFFIC COUNTS APPROXIMATELY 71,500 CARS PER DAY
- WALKING DISTANCE FROM AREA SCHOOLS (3,200 STUDENTS) AND RESIDENTIAL COMMUNITIES.



Triple Net Commercial Real Estate Services, LLC.
 Bruce Shweky
954-214-4493

Rental Rate:	\$35.00 /SF/YR
Total Space Available:	5,600 SF
Max. Contiguous:	4,200 SF
Property Type:	Shopping Center
Center Type:	Neighborhood Center
Stores:	33
Center Properties:	5
Gross Leasable Area:	79,003 SF
Walk Score ®:	80 (Very Walkable)
Transit Score ®:	37 (Some Transit)
Rental Rate Mo:	\$2.92 /SF/MO

1

1st Floor

Space Available	4,200 SF
Rental Rate	\$35.00 /SF/YR
Date Available	90 Days
Service Type	Triple Net (NNN)
Built Out As	Healthcare
Space Type	Relet
Space Use	Medical
Lease Term	Negotiable

Urgent care space ready to go Available Soon.

2

1st Floor Ste 4

Space Available	1,400 SF
Rental Rate	\$35.00 /SF/YR
Date Available	Now
Service Type	Triple Net (NNN)
Space Type	Relet
Space Use	Retail
Lease Term	5 - 10 Years

JOIN DENNY'S, PLANET FITNESS, DOLLAR GENERAL, BURGER KING, DUNKIN DONUTS, TACOBELL, PEARLE VISION, SUBWAY, METRO BY T-MOBILE AND DOMINOS! LOCATED AT THE NWC OF MIAMI GARDENS DRIVE (NW 186 ST) & LUDLAM ROAD (NW 67 AVE), ACROSS FROM PUBLIX AND SEDANOS! WALKING DISTANCE FROM AREA SCHOOLS AND RESIDENTIAL COMMUNITIES.



18600-18760 NW 67th Ave, Miami, FL 33015

Country Club Plaza North Prime Retail Space Available

This 79,003 square foot shopping center is well located in the Miami Lakes/Country Club of Miami area on 9 acres with abundant parking.

Benefits include: Adjacent to Publix and Sedano's, centralized location, excellent retail mix and its proximity to the area's major schools. The center is extremely well planned astride the area's two major arteries.

Join Denny's, Planet Fitness, Metro by T-Mobile, Taco Bell, Burger King, Pearl Vision, Dollar General, Dunkin Donuts and many more!

Northwest corner of Ludlam Road (NW 67th Avenue) & NW 186th Avenue (Miami Gardens).....The property is within close proximity to the Palmetto Expressway (826), The Florida Turnpike and I-75.

Property Photos



18600-18760 NW 67th Ave & Miami Gardens Dr & NW 67th Ave

Property Photos



China Buffet



Burger King

Property Photos



Dunkin Donuts



Planet Fitness-Reno Picture coming soon

Property Photos

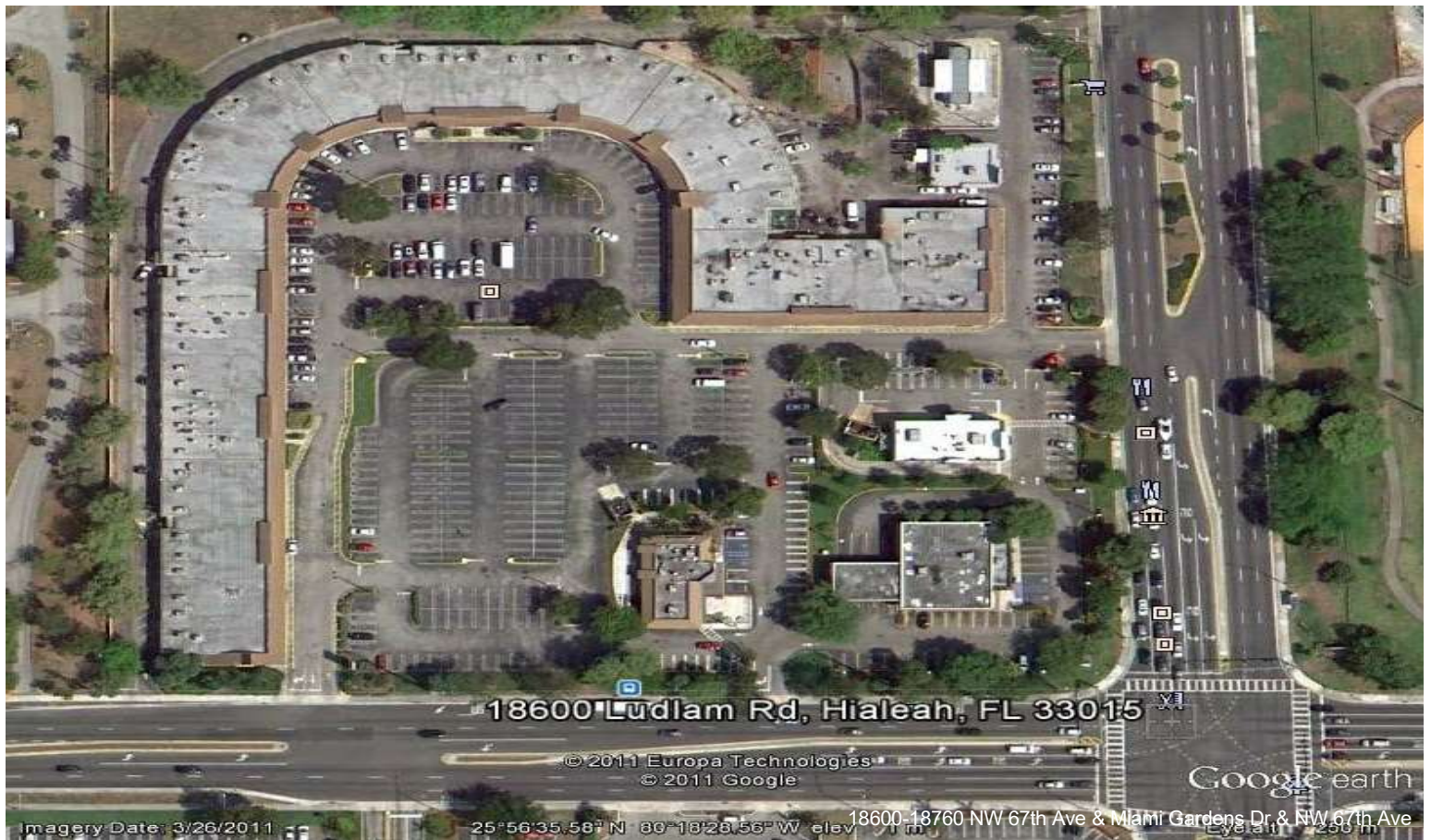


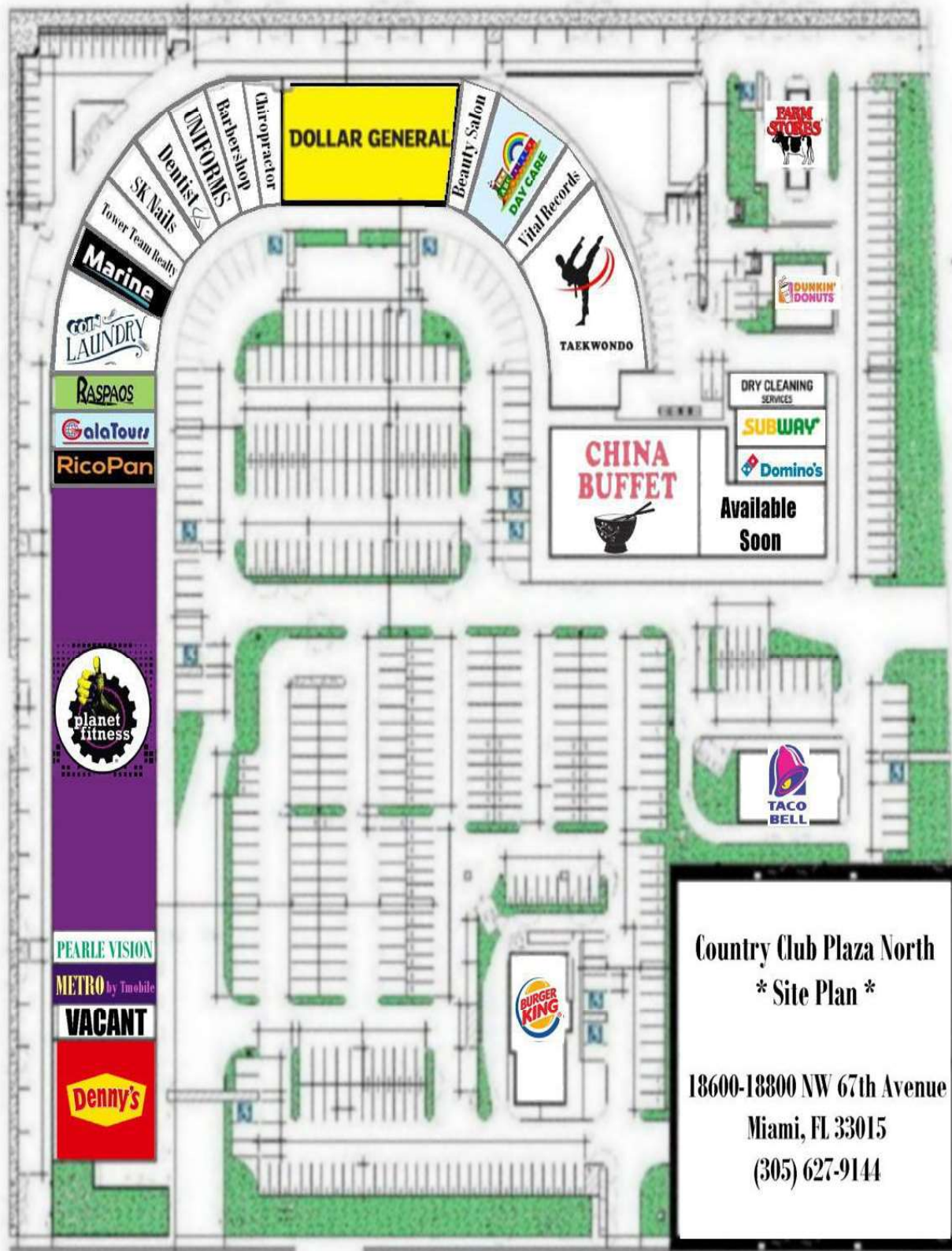
Metro/Pearle Vision-Reno Picture coming soon



Dollar General-Reno Picture coming soon

Property Photos





NW 67th Avenue (Ludlam Road)

Country Club Plaza North * Site Plan *

18600-18800 NW 67th Avenue
Miami, FL 33015
(305) 627-9144

NW 186th Street (Miami Gardens Drive)