



OFFICE/MEDICAL SPACE FOR LEASE

NORTHBROOK PROFESSIONAL PLAZA
1535 LAKE COOK ROAD, NORTHBROOK IL

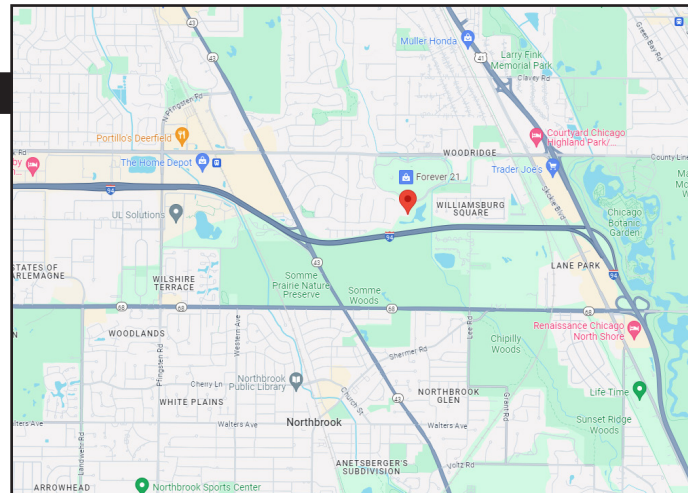


BUILDING FEATURES:

- 920-2,530 SF Office or Medical Space Available
- Located directly adjacent to Northbrook Court Mall
- Minutes from Edens & Tri-State Expressways
- Tenant controlled HVAC & 24-hour tenant access
- Comcast high-speed internet and cable available
- Beautifully landscaped with fountain and pond
- New Building Monument Sign with Tenant Signage Available
- Build to suit office & medical space
- Zoned O-2
- Operable windows & tenant signage available
- Asking Rent: \$14.00- \$15.00 Net PSF + CAM & Real Estate Taxes: \$12.22 PSF

AVAILABLE SPACE:

SUITE	USE	SIZE	Available
107	Office/Medical	2,350 SF	ASAP
204	Office/Medical	1,434 SF	ASAP
208	Office/Medical	1,720 SF	ASAP
410	Office/Medical	1,525 SF	ASAP
602	Office/Medical	920 SF	ASAP



FOR MORE INFORMATION:

RANDY OLCZYK
President/Principal
Direct: 847.246.9611
randy@chicagolandcommercial.com

TOM CALLAHAN
Senior Vice President
Direct: 847.246.9636
Tom@chicagolandcommercial.com



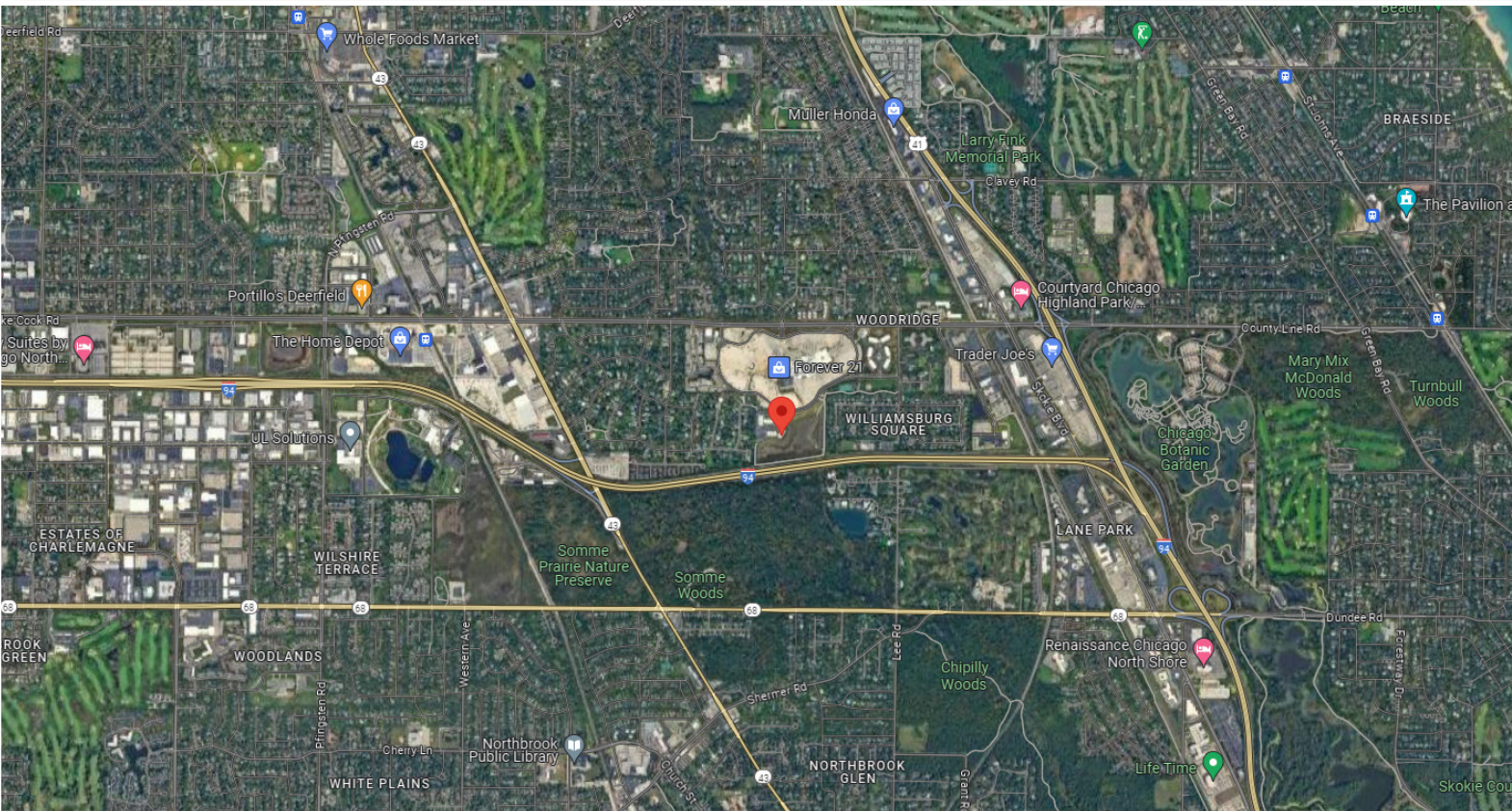
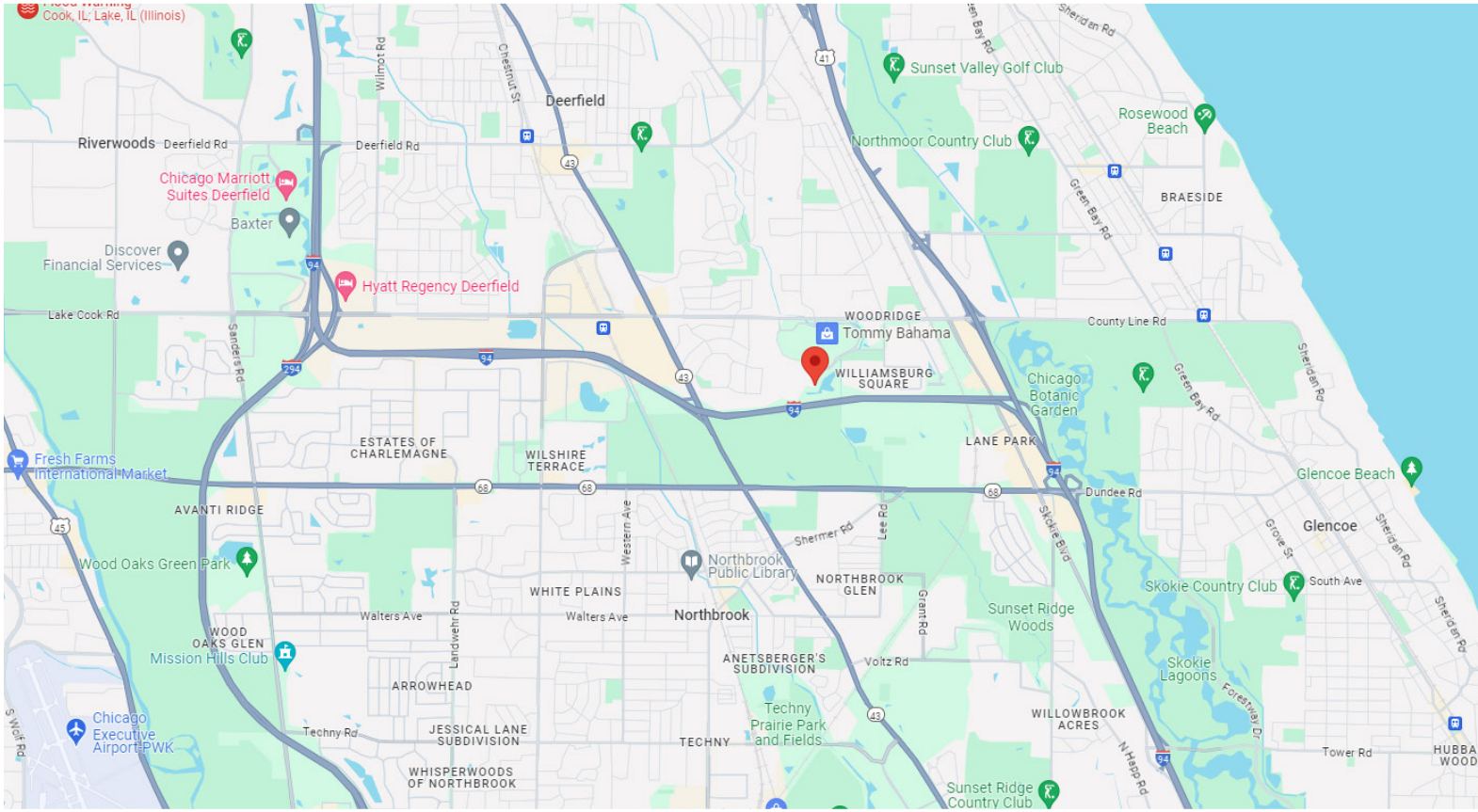
4811 Emerson Ave Suite 112, Palatine, IL



OFFICE/MEDICAL SPACE FOR LEASE

NORTHBROOK PROFESSIONAL PLAZA

1535 LAKE COOK ROAD, NORTHBROOK IL

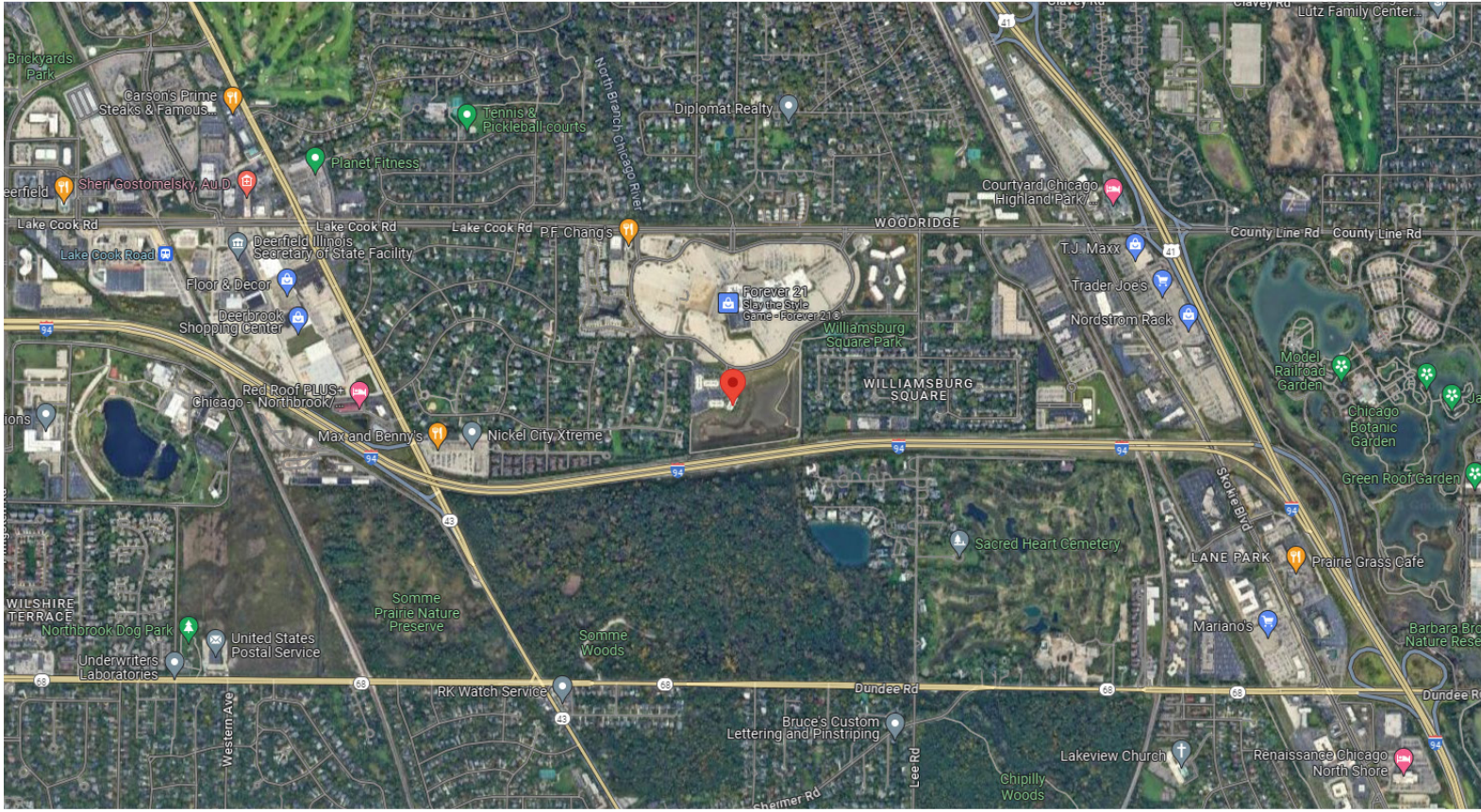




OFFICE/MEDICAL SPACE FOR LEASE

NORTHBROOK PROFESSIONAL PLAZA

1535 LAKE COOK ROAD, NORTHBROOK IL





OFFICE/MEDICAL SPACE FOR LEASE

NORTHBROOK PROFESSIONAL PLAZA
1535 LAKE COOK ROAD, NORTHBROOK IL

BUILDING PHOTOGRAPHS



BEAUTIFULLY LANDSCAPED GROUNDS
LOCATED DIRECTLY NEXT TO
NORTHBROOK COURT MALL





OFFICE/MEDICAL SPACE FOR LEASE

NORTHBROOK PROFESSIONAL PLAZA
1535 LAKE COOK ROAD, NORTHBROOK IL

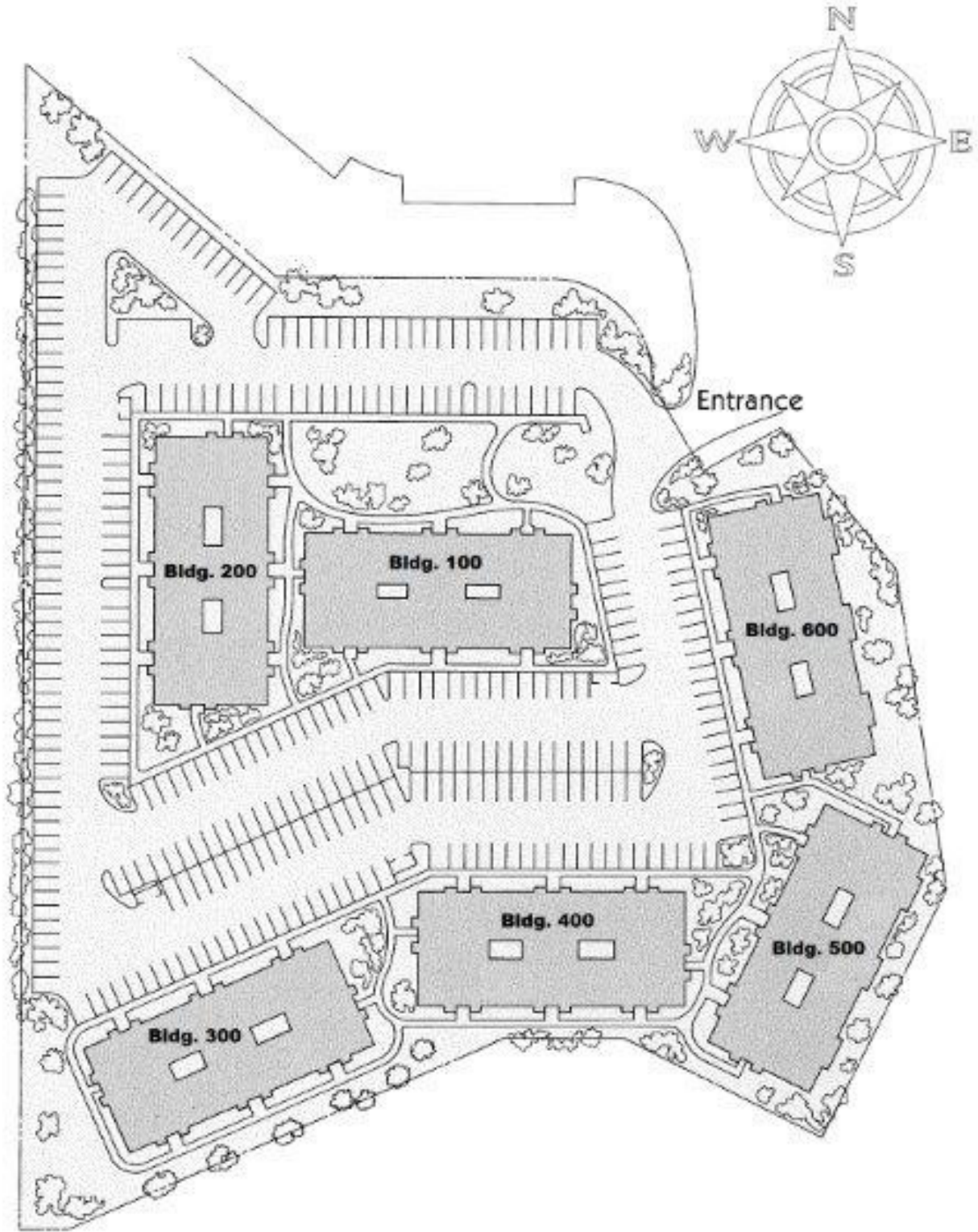




OFFICE/MEDICAL SPACE FOR LEASE

NORTHBROOK PROFESSIONAL PLAZA
1535 LAKE COOK ROAD, NORTHBROOK IL

BUILDING SITE PLAN



Northbrook Court Professional Plaza



OFFICE/MEDICAL SPACE FOR LEASE

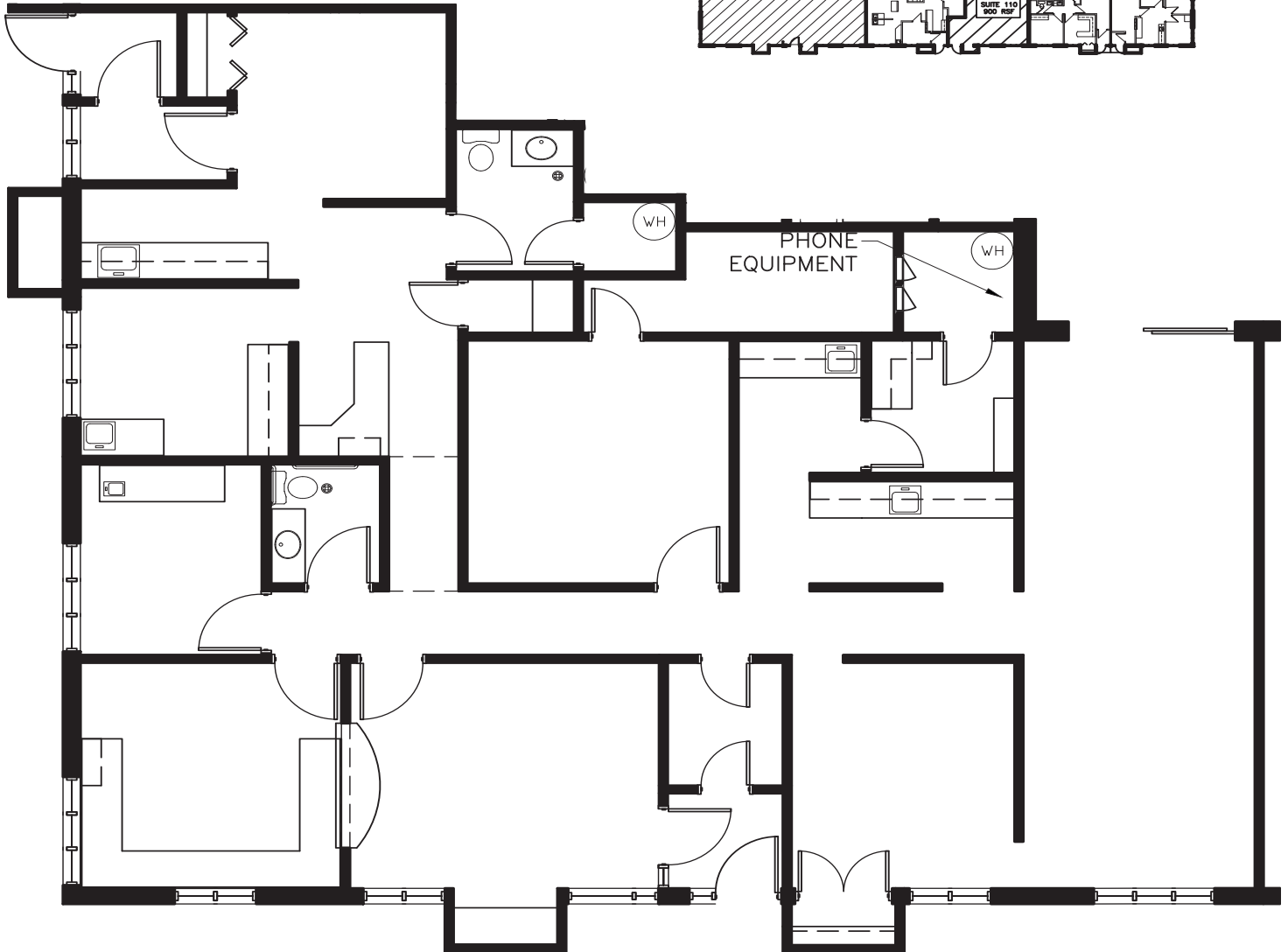
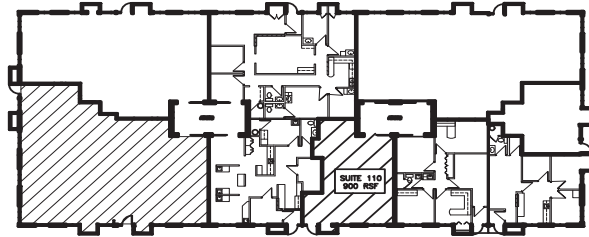
NORTHBROOK PROFESSIONAL PLAZA
1535 LAKE COOK ROAD, NORTHBROOK IL

FLOOR PLAN SUITE 107 (2,350 SF)

Northbrook Court Professional Plaza

1535 Lake Cook Road, Northbrook, Illinois 60062

Key Plan:



Suite #107 - As-Built Conditions

2,350 Rentable Square Feet

Scale:

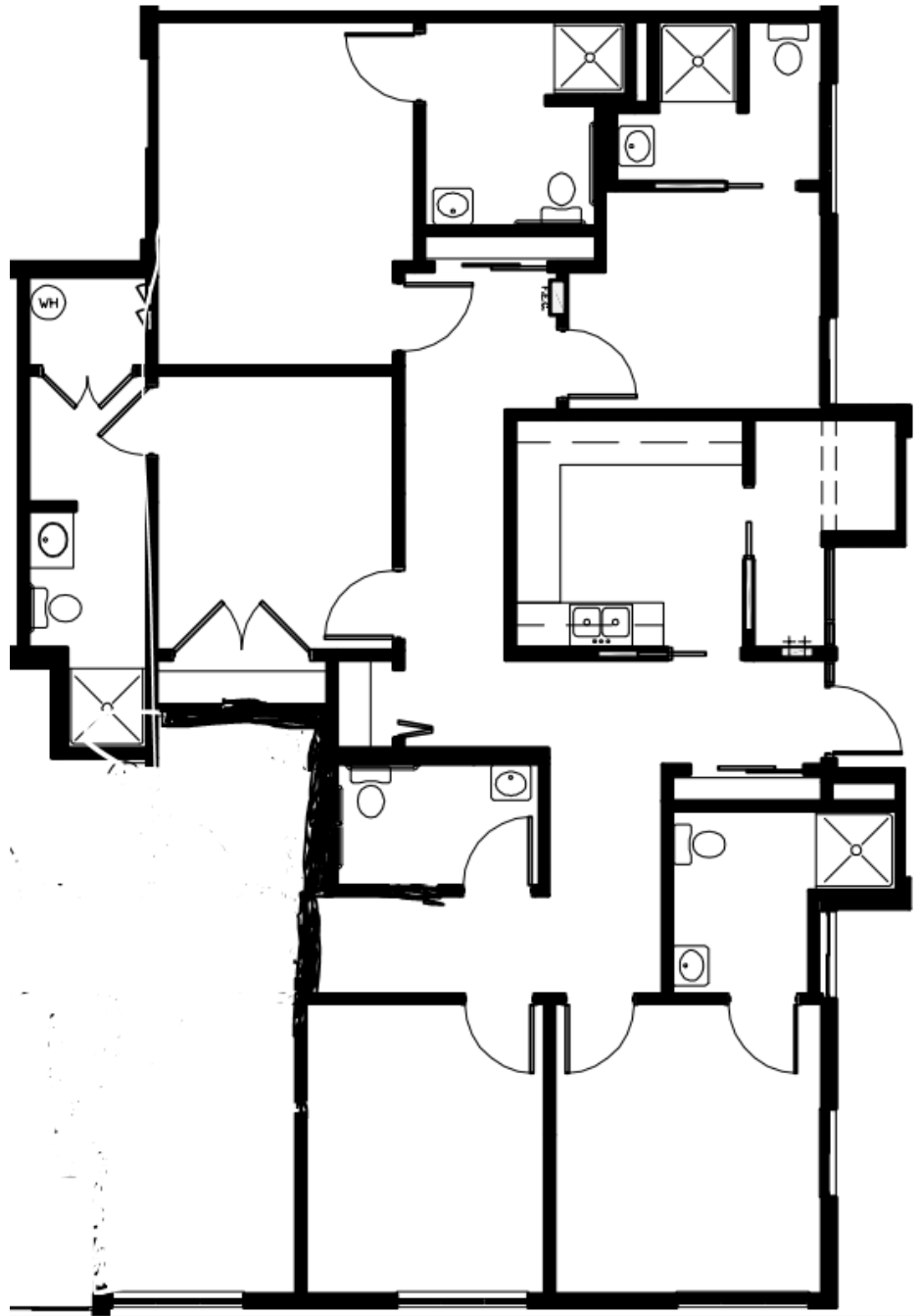
N.T.S.



OFFICE/MEDICAL SPACE FOR LEASE

NORTHBROOK PROFESSIONAL PLAZA
1535 LAKE COOK ROAD, NORTHBROOK IL

FLOOR PLAN SUITE 208 (1,720 SF)





OFFICE/MEDICAL SPACE FOR LEASE

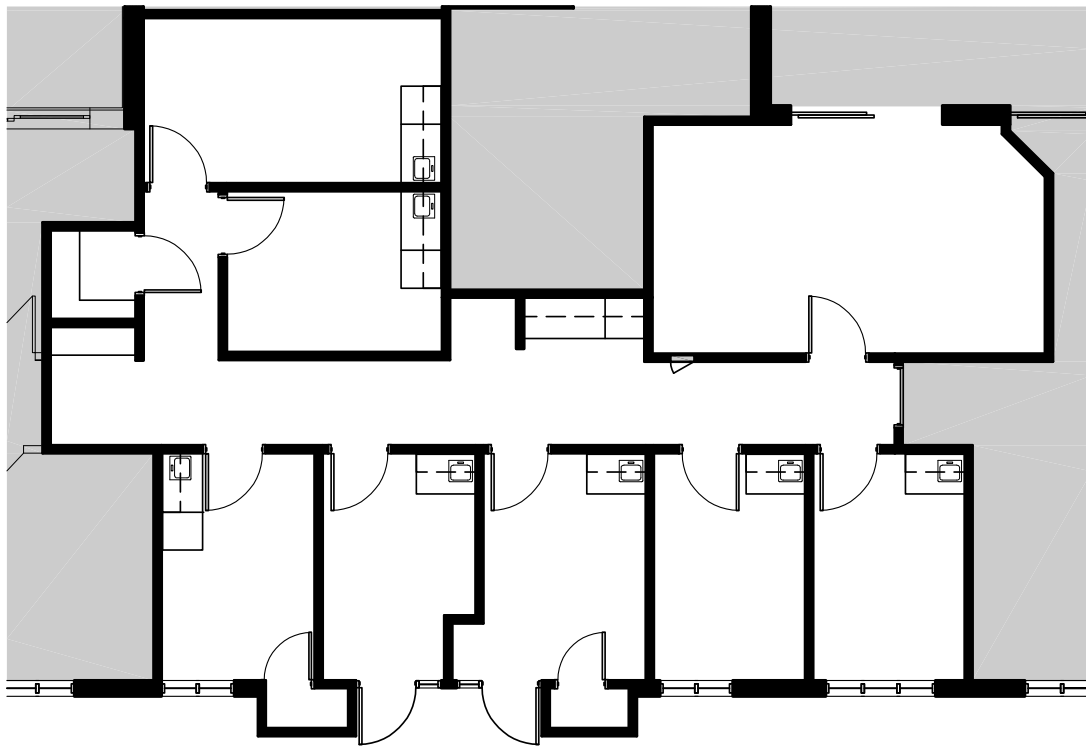
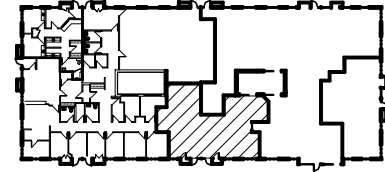
NORTHBROOK PROFESSIONAL PLAZA
1535 LAKE COOK ROAD, NORTHBROOK IL

FLOOR PLAN SUITE 410 (1,525 SF)

Northbrook Court Professional Plaza

1535 Lake Cooke Road
Northbrook, Illinois 60062

Key Plan:



Suite #410 - As-Built Conditions

1,525 Rentable Square Feet

Scale:

N.T.S.



OFFICE/MEDICAL SPACE FOR LEASE

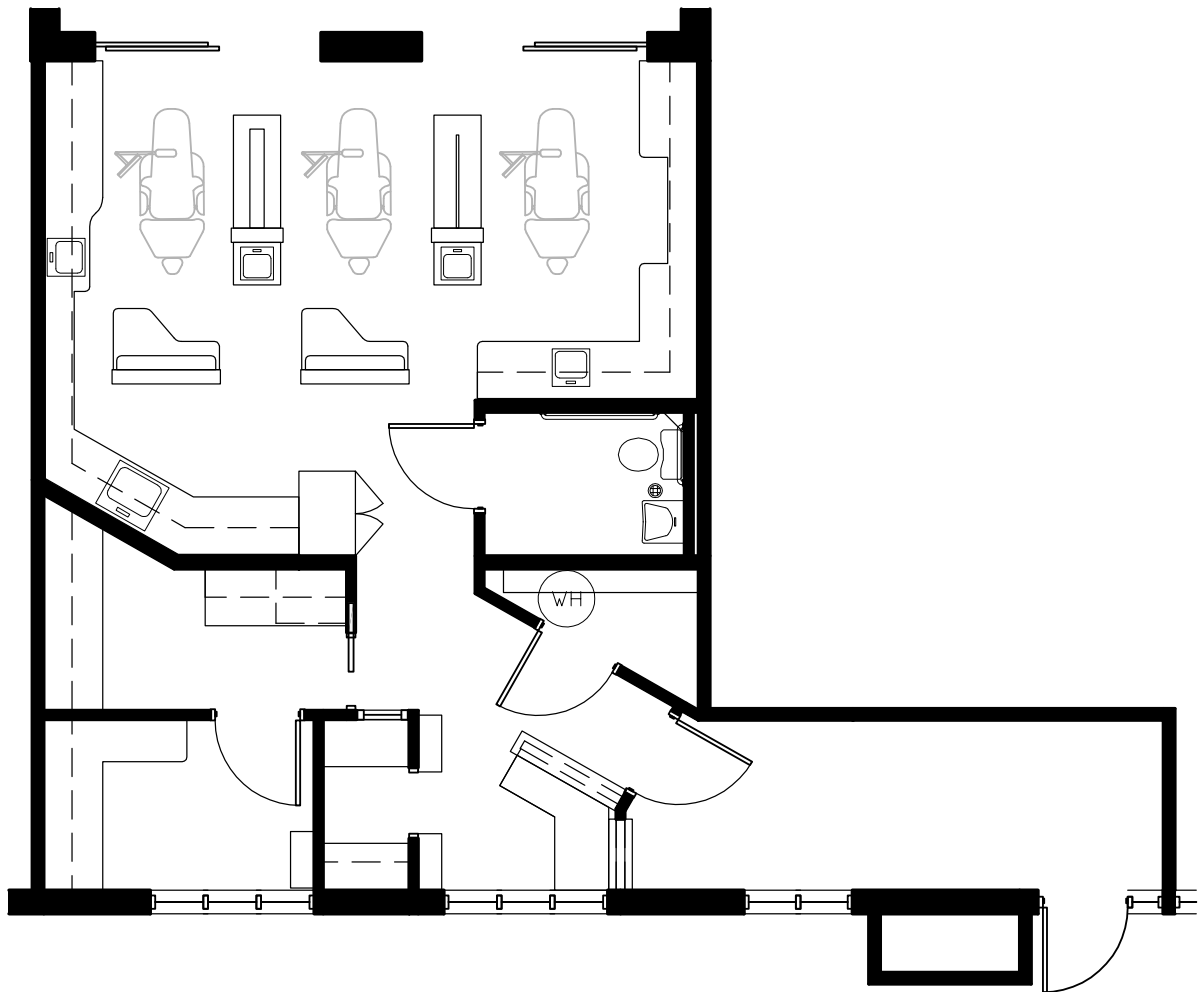
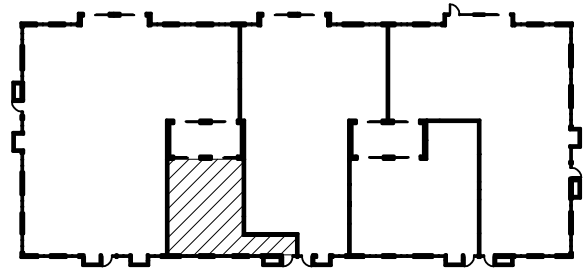
NORTHBROOK PROFESSIONAL PLAZA
1535 LAKE COOK ROAD, NORTHBROOK IL

FLOOR PLAN SUITE 602 (920 SF)

Northbrook Court Professional Plaza

1535 Lake Cook Road, Northbrook, Illinois 60062

Key Plan:



Suite #602 - As-Built Conditions

920 Rentable Square Feet

Scale:

N.T.S.



OFFICE/MEDICAL SPACE FOR LEASE

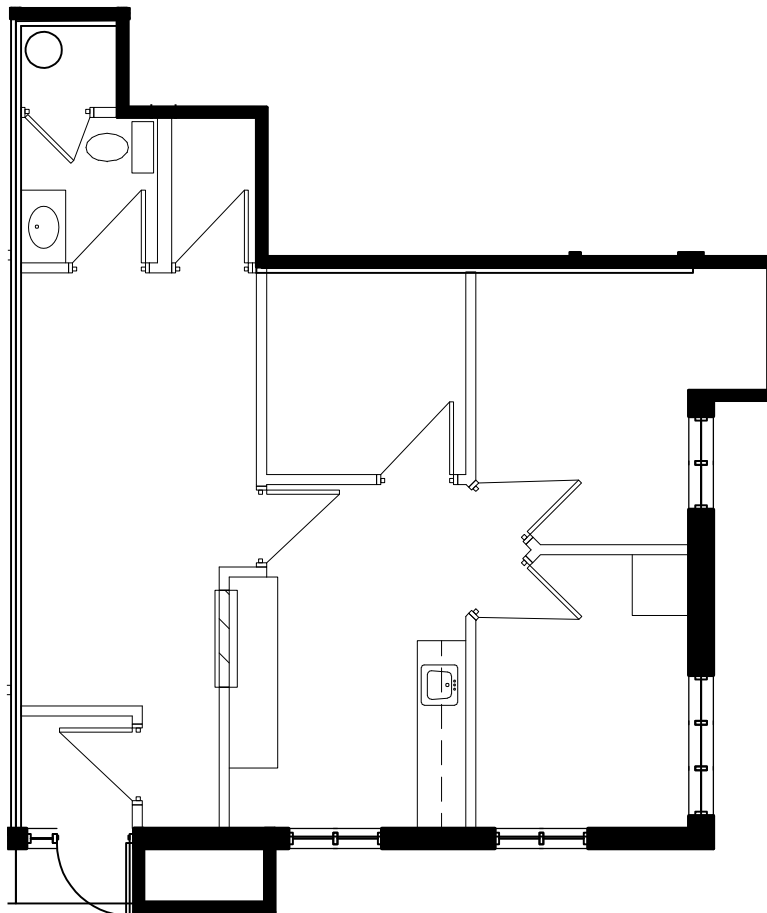
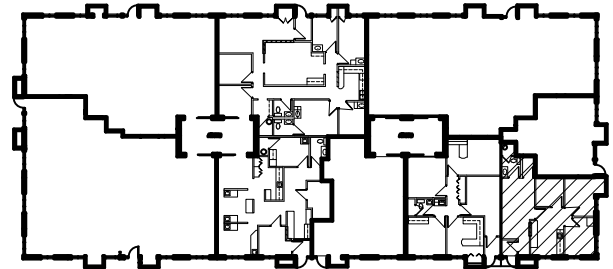
NORTHBROOK PROFESSIONAL PLAZA
1535 LAKE COOK ROAD, NORTHBROOK IL

FLOOR PLAN SUITE 112 (790 SF)

Northbrook Court Professional Plaza

1535 Lake Cook Road, Northbrook, Illinois 60062

Key Plan:



Suite #112 - As-Built Conditions

790 Rentable Square Feet

Scale:

N.T.S.



OFFICE/MEDICAL SPACE FOR LEASE

NORTHBROOK PROFESSIONAL PLAZA
1535 LAKE COOK ROAD, NORTHBROOK IL

FLOOR PLAN SUITE 212 (1,400 SF)

1535 Lake Cook Road, Northbrook
Suite 212
1,400 SF

As Built

