

FOR LEASE | RETAIL/SHOWROOM/OFFICE SPACE
UNIT 2 - 20092 93A AVENUE
LANGLEY, BC



- ▶ 985 SF Retail/Showroom/Office Space
- ▶ Port Kells/Northwest Langley Industrial/Commercial Area

Highlights

- ▶ Full HVAC space
- ▶ Washroom
- ▶ Sprinklered
- ▶ Great transportation connections

Grant Basran
Associate Vice President | Industrial
D 604.630.3376 C 604.518.2188
grant.basaran@lee-associates.com

Sebastian LP Espinosa CCIM, SIOR
Personal Real Estate Corporation
Senior Vice President | Industrial
D 604.630.3396 C 604.783.8139
sebastian.espinosa@lee-associates.com

FOR LEASE | RETAIL/SHOWROOM/OFFICE SPACE

UNIT 2 - 20092 93A AVENUE

LANGLEY, BC

Location

The subject property is situated within the Northwest Langley/Port Kells submarket, one of Metro Vancouver's most desirable industrial markets. Located just east of 200th Street and north of 92A Avenue, this property offers quick access to Highway 1, Highway 15, Highway 17, and Highway 10.

Zoning

CD-14 (Comprehensive Development Zone). Full copy of bylaws available upon request.

Features

- ▶ Three phase power
- ▶ Handicap washroom
- ▶ 9' ceilings
- ▶ HVAC space
- ▶ Sprinklered

Available Space

985 SF

Basic Rent

\$21.95 PSF per annum

Additional Rent

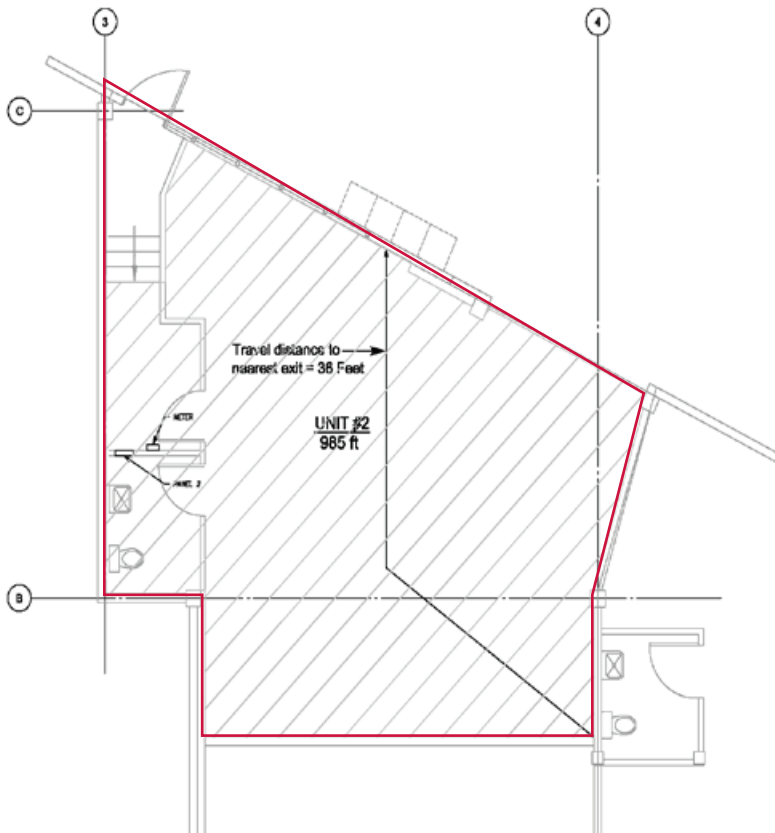
\$4.50 PSF per annum (2025 estimate)

Total Monthly Rent

\$2,171.10 + GST

Availability

Contact broker



Grant Basran

Associate Vice President | Industrial
D 604.630.3376 C 604.518.2188
grant.basran@lee-associates.com

Sebastian LP Espinosa CCIM, SIOR

Personal Real Estate Corporation
Senior Vice President | Industrial
D 604.630.3396 C 604.783.8139
sebastian.espinosa@lee-associates.com

Disclaimer: Although the information contained within is from sources believed to be reliable, no warranty or representation is made as to its accuracy being subject to errors, omissions, conditions, prior lease, withdrawal or other changes without notice and same should not be relied upon without independent verification. © Lee & Associates Commercial Real Estate (BC) Ltd. All Rights Reserved. 12/18/24.