

±24,000 SF Office/Warehouse Space

CBRE

For Lease

148 Beacon Street South San Francisco, California



Property Highlights

- Total Space: ±24,000 SF (can be divisible)
 - Office Space: ±4,000 SF; Warehouse: ±20,000 SF
 - Excellent Hwy 101 Frontage with Building Signage Available
 - Insulated Warehouse
 - Skylights, Fully Sprinklered
 - 3 Grade-level Doors
 - Dock loading possible, retrofitted by owner
 - 15' Clear Height
 - Power: 800 amps, 480V, 3-phase, 200 amps, 220V
 - Great access off Hwy 101; Minutes from SFO
 - Available Now
 - Asking: \$1.55/SF/Month NNN
 - OPEX: \$0.15/SF/Month
- (Based on 2026 property taxes and insurance)

Contact Us

Marshall Hydorn
Executive Vice President
+1 650 577 2990
marshall.hydorn@cbre.com
Lic. 00960660

David Black
Executive Vice President
+1 650 577 2992
david.black@cbre.com
Lic. 00687895

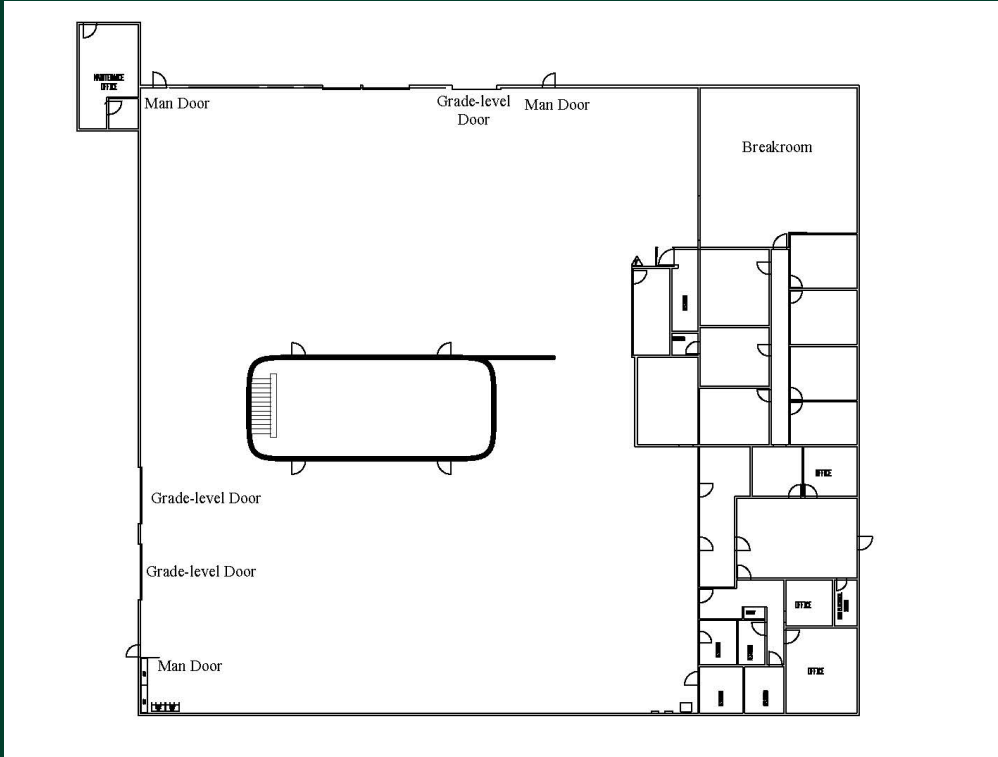
Matt Murray
Senior Associate
+1 650 577 2934
matt.murray@cbre.com
Lic. 02083830

© 2026 CBRE, Inc. All rights reserved. This information has been obtained from sources believed reliable but has not been verified for accuracy or completeness. CBRE, Inc. makes no guarantee, representation or warranty and accepts no responsibility or liability as to the accuracy, completeness, or reliability of the information contained herein. You should conduct a careful, independent investigation of the property and verify all information. Any reliance on this information is solely at your own risk. CBRE and the CBRE logo are service marks of CBRE, Inc. All other marks displayed on this document are the property of their respective owners, and the use of such marks does not imply any affiliation with or endorsement of CBRE. Photos herein are the property of their respective owners. Use of these images without the express written consent of the owner is prohibited.

148 Beacon Street
South San Francisco, California

For Lease

Floor Plan (not to scale)



Contact Us

Marshall Hydorn
Executive Vice President
+1 650 577 2990
marshall.hydorn@cbre.com
Lic. 00960660

David Black
Executive Vice President
+1 650 577 2992
david.black@cbre.com
Lic. 00687895

Matt Murray
Senior Associate
+1 650 577 2934
matt.murray@cbre.com
Lic. 02083830



148 Beacon Street
South San Francisco, California

For Lease



Contact Us

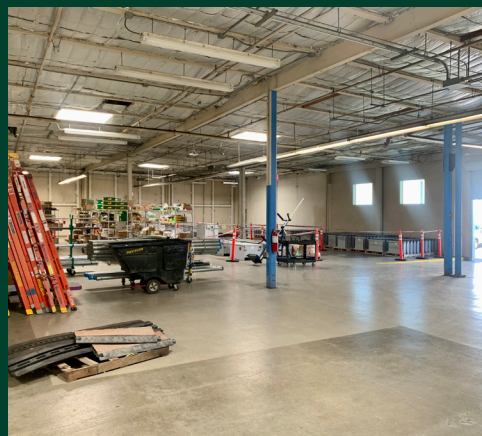
Marshall Hydorn
Executive Vice President
+1 650 577 2990
marshall.hydorn@cbre.com
Lic. 00960660

David Black
Executive Vice President
+1 650 577 2992
david.black@cbre.com
Lic. 00687895

Matt Murray
Senior Associate
+1 650 577 2934
matt.murray@cbre.com
Lic. 02083830

148 Beacon Street
South San Francisco, California

For Lease



Contact Us

Marshall Hydorn
Executive Vice President
+1 650 577 2990
marshall.hydorn@cbre.com
Lic. 00960660

David Black
Executive Vice President
+1 650 577 2992
david.black@cbre.com
Lic. 00687895

Matt Murray
Senior Associate
+1 650 577 2934
matt.murray@cbre.com
Lic. 02083830