



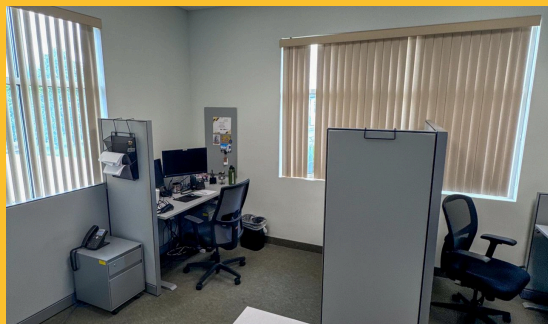
## Prime Commercial Space For Lease

1011 Tompkins Dr, Byron, MN, 55920

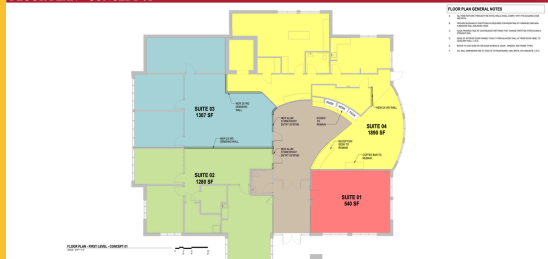
- Move-in ready and flexible space
- Ample parking with room for expansion
- Convenient access to Highway 14
- Built-in 2006, modern and well-maintained

- **Lease Rates** \$16 PSF + NNN
- **Building Size** 6,095 SF
- **Lot Size** 1.877 Acre

Now available for lease, this high-quality commercial building offers 6,095 sq. ft. of modern, flexible space—perfect for office, retail, medical, or professional services. The layout can be adapted to suit a variety of business needs.



1011 TOMPKINS DR BYRON MN  
FLOOR PLAN - CONCEPT 01



**Bucky Beeman**  
bucky@rgi-group.com  
(507) 951-7130

**Mark Steege**  
mark@rgi-group.com  
(507) 951-1977