

# Corporate Center IV

Exterior Garage Signage Opportunity

4301 West Boy Scout Blvd.  
Tampa, FL 33607




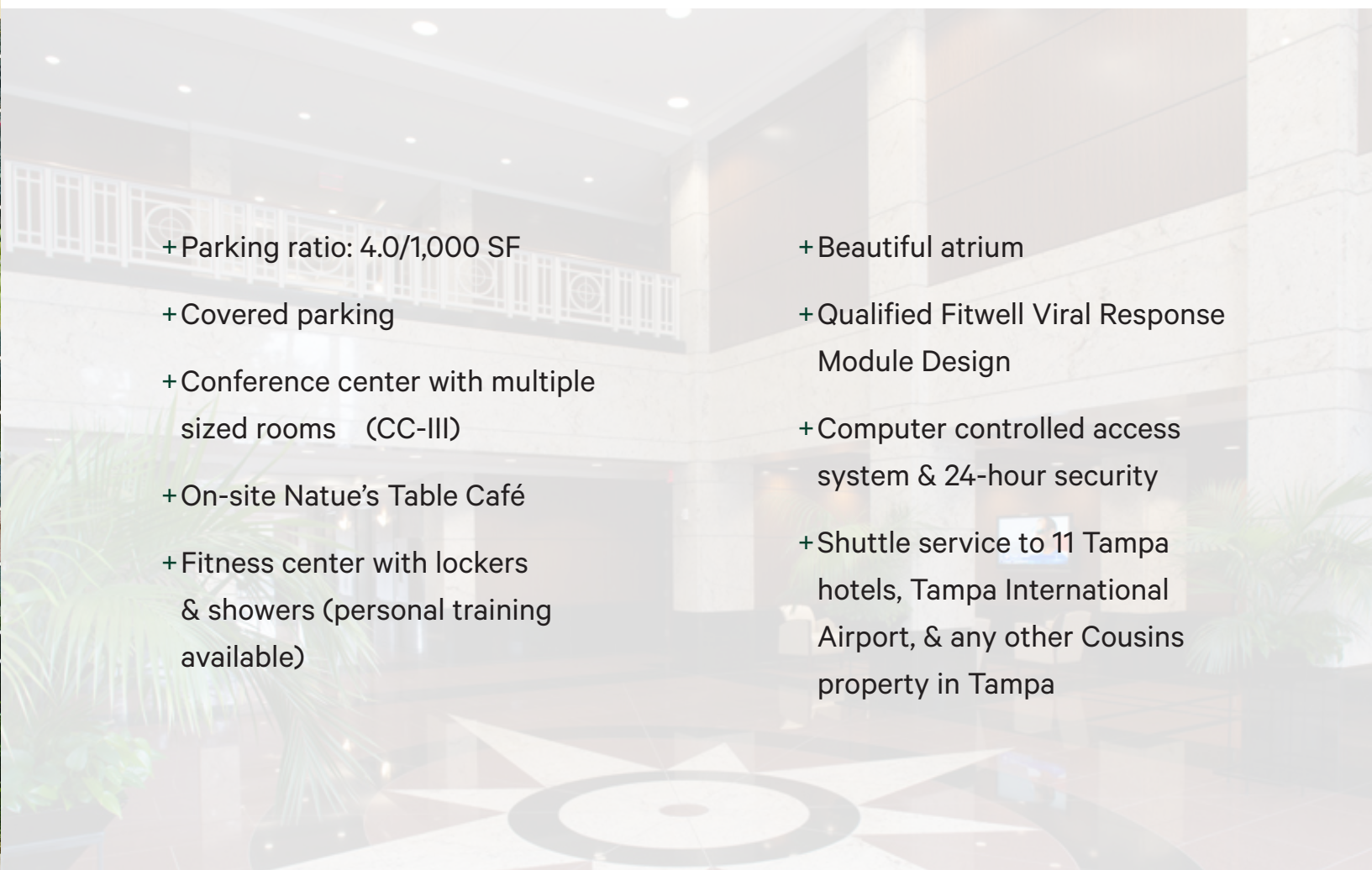
16,543 SF of Office Space Available For Lease



# Property Highlights

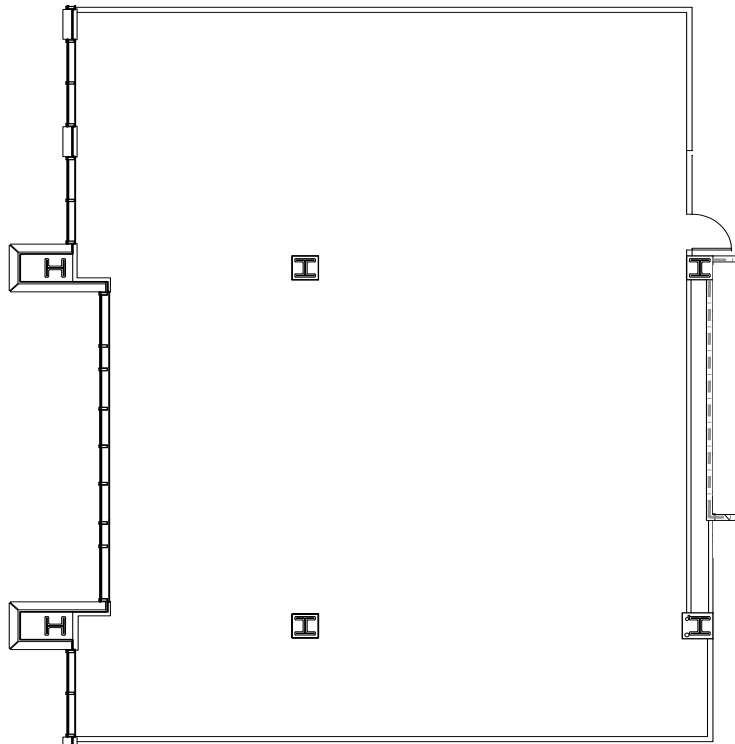
Corporate Center IV at International Plaza is Westshore's premier, GOLD LEED certified office building. Benefits to customers include: energy efficiency, improved indoor air quality, enhancing employee productivity, health, & wellbeing.

This Class A, 8 story office building with more than 250,000 square feet is immediately adjacent to Tampa International Plaza and Tampa International Airport. Due to its prime Westshore location, employers have access to both the Hillsborough & Pinellas County labor markets, as well as easy access to all major roadways: I-275, Veterans Expressway, & State Road 60.

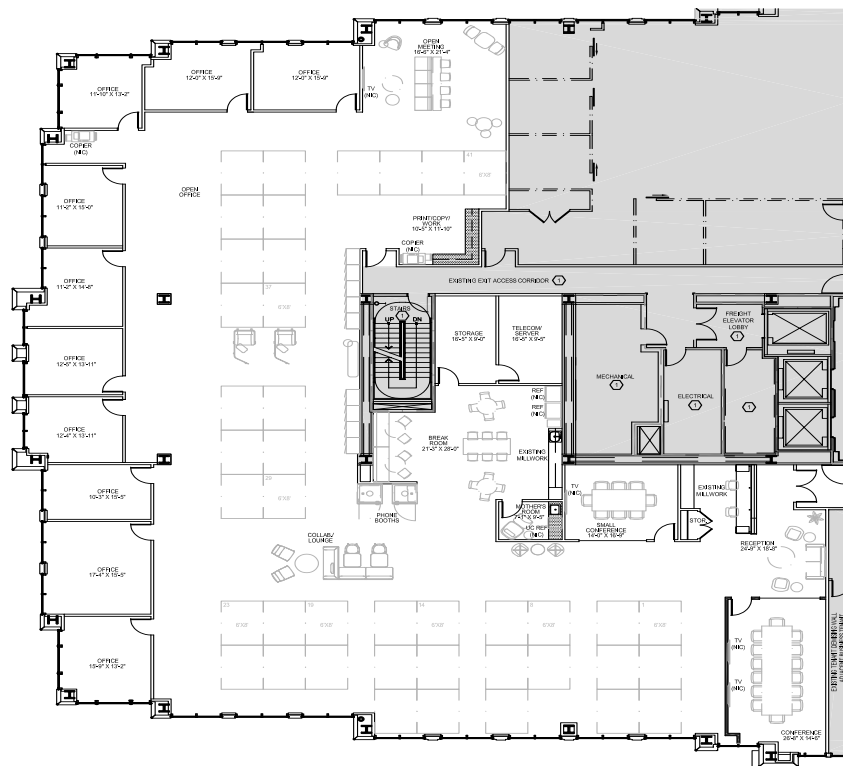
- 
- 
- + Parking ratio: 4.0/1,000 SF
  - + Covered parking
  - + Conference center with multiple sized rooms (CC-III)
  - + On-site Natue's Table Café
  - + Fitness center with lockers & showers (personal training available)
  - + Beautiful atrium
  - + Qualified Fitwell Viral Response Module Design
  - + Computer controlled access system & 24-hour security
  - + Shuttle service to 11 Tampa hotels, Tampa International Airport, & any other Cousins property in Tampa



## Suite 250 - 3,334 RSF



## Suite 520 - 13,209 RSF

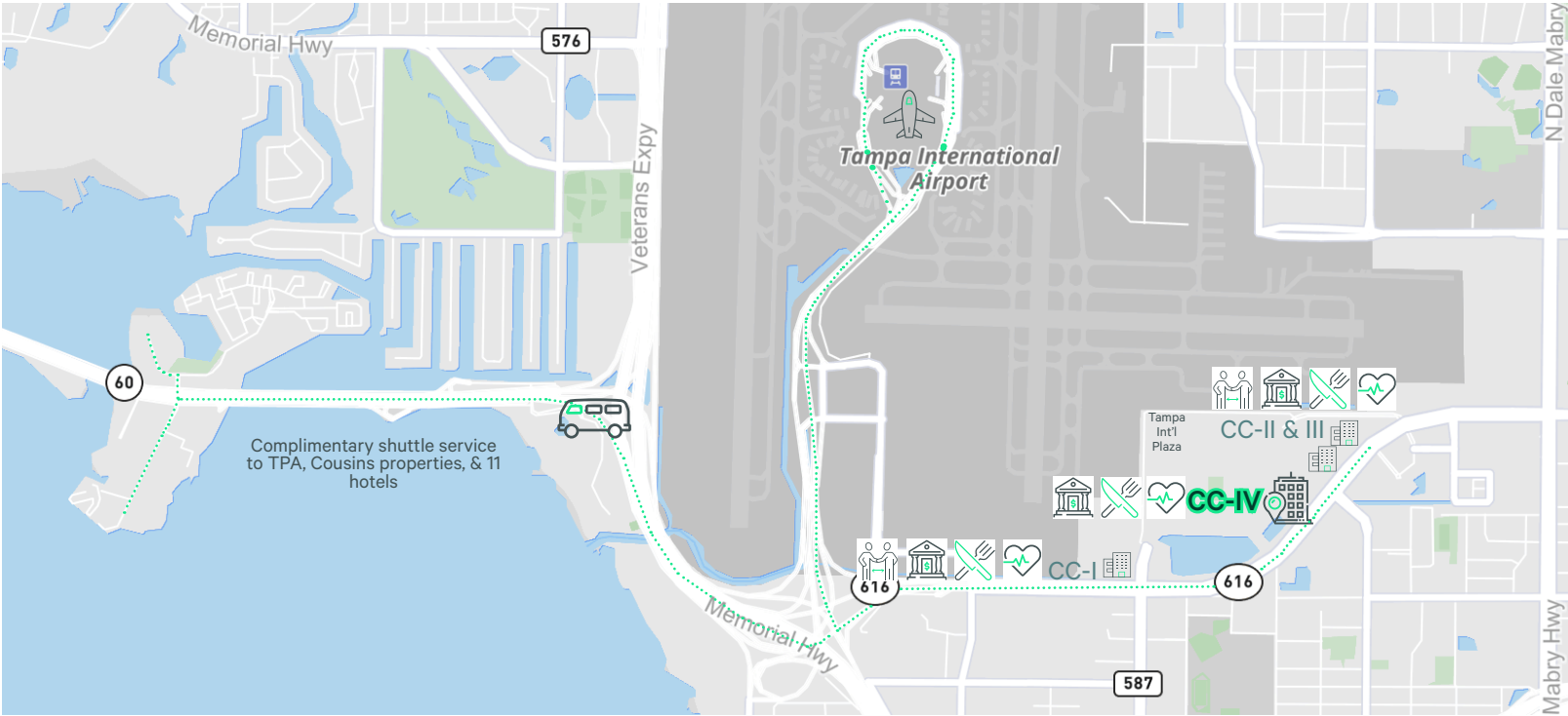




# Exterior Garage Signage Opportunity



# Amenities at Corporate Center Park



- + Free 24/7 Fitness Center (personal trainer available)
- + Free Shuttle Service
- + Café
- + Conference Rooms
- + Banking



Corporate Center I



Corporate Center II



Corporate Center III



Corporate Center IV



+ Shares with CC-III



+ Shares with CC-II



+ Shares with CC-III





## Corporate Center IV

4301 West Boy Scout Blvd. | Tampa, FL 33607

# For Lease



AWARDED THE 2021 **OUTSTANDING  
BUILDING OF THE YEAR (TOBY)** BY  
BUILDING OWNERS AND MANAGERS ASSOCIATION

*(About BOMA)*



## For leasing opportunities, please contact:

### James Garvey

Senior Vice President

+1 813 334 1602

[jimmy.garvey@cbre.com](mailto:jimmy.garvey@cbre.com)

### Lara Sieder

First Vice President

+1 727 871 2145

[lara.sieder@cbre.com](mailto:lara.sieder@cbre.com)

© 2025 CBRE, Inc. All rights reserved. This information has been obtained from sources believed reliable, but has not been verified for accuracy or completeness. You should conduct a careful, independent investigation of the property and verify all information. Any reliance on this information is solely at your own risk. CBRE and the CBRE logo are service marks of CBRE, Inc. All other marks displayed on this document are the property of their respective owners, and the use of such logos does not imply any affiliation with or endorsement of CBRE. Photos herein are the property of their respective owners. Use of these images without the express written consent of the owner is prohibited.

