

9421 MISSION RD.

RANCH MART SHOPPING CENTER SUBLEASE OPPORTUNITY

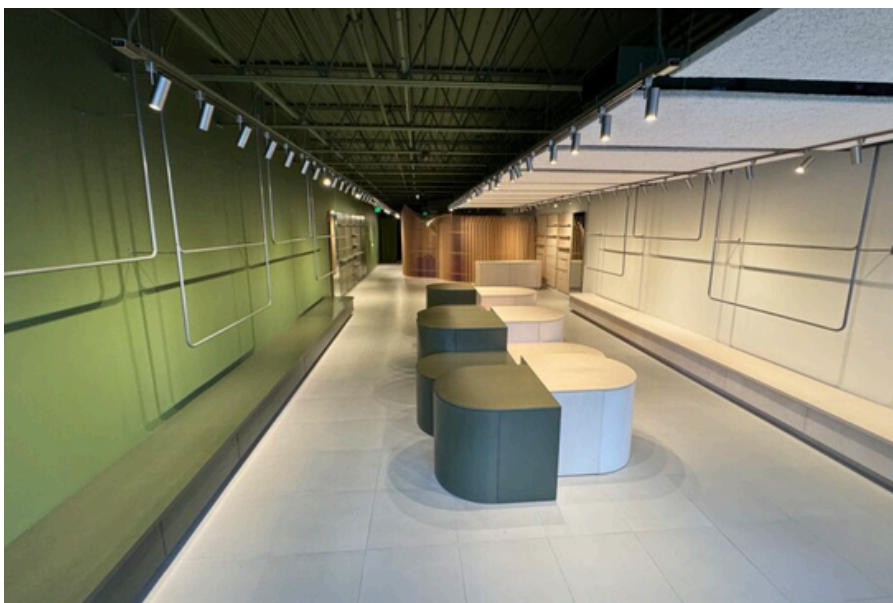
HIGHLIGHTS

PROPERTY

- Prime Leawood location along Mission Rd.
- Immediate access to 95th St / I-435 ramp for quick connectivity
- Excellent daytime population and high-income demographics
- Convenient customer and employee parking
- Established destination corridor - consistent drive-by impressions and repeat visits
- Ranch Mart Shopping Center offers a strong mix of convenience and specialty retailers

SUBLEASE SPACE

- Custom interior by Hufft - modern, elevated, brand-forward finishes
- Flexible layout ideal for showroom / studio / specialty retail / boutique
- Open floor plan
- High ceilings with curated lighting
- Condition: turn-key; minimal downtime to occupy



SPACE DETAILS

Rate	\$25.00 / SF / YR
Triple Nets	\$7.85 / SF / YR
Term	5 YRS remaining + 5 YR option
Available	Immediate occupancy
Signage	Exterior signage available
Space Size	2,530 SF






VIRTUAL TOUR

www.youtube.com/watch?v=Wk8NW4bAySU



9421 MISSION RD.

DEMOGRAPHICS

	2024 Population	239,978 (2 Miles)
	95th & Mission Vehicles Per Day	20,787
	Median Home Value	\$469,214
	Avg Household Income	143,727
	Total Specified Consumer Spending (\$)	\$631.4M

COMMUNITY FOCUSED

Blending modern sophistication with neighborhood warmth, Ranch Mart Shopping Center reflects the spirit of Leawood and its long-standing community roots.

Centrally located along the Mission Road corridor, this destination continues to evolve while drawing loyal patrons and new visitors from across the metro

With a curated mix of retail, dining, and services, it remains a vibrant hub for everyday connection and convenience.



LOCATION & AREA

