

2000 TAYLOR

FOR SALE OR LEASE
OFFICE / R&D SPACE

2000 TAYLOR ROAD, AUBURN HILLS, MI



VIEW VIDEO TOUR 

Larry Emmons
larry.emmons@nmrk.com
248-447-2707

Mike Valant
mike.valant@nmrk.com
248-357-6568

JP Champine
jp.champine@nmrk.com
248-357-6596

Daniel Canvasser
daniel.canvasser@nmrk.com
248-350-8141

NEWMARK



TIME EQUITIES INC.

2000 TAYLOR | BUILDING AERIAL VIEW



- Entire building (180,142 RSF) available for sale as a single user property. Contact listing agents for details.
- Up to 154,468 RSF available immediately, including:
 - Partial 1st Floor – 13,809 - 28,411 RSF including 14,602 RSF tech space
 - Partial 2nd Floor – 15,296 - 30,593 RSF
 - Entire 3rd Floor – 47,732 RSF
 - Entire 4th Floor – 47,732 RSF
- Lobby renovation and state-of-the-art building automation system
- EV charging stations
- Emergency full building generator
- Class A building
- Excellent I-75 signage/branding opportunity
- Quick access to I-75 and M-59
- Flexible technology and research zoning

2000 TAYLOR

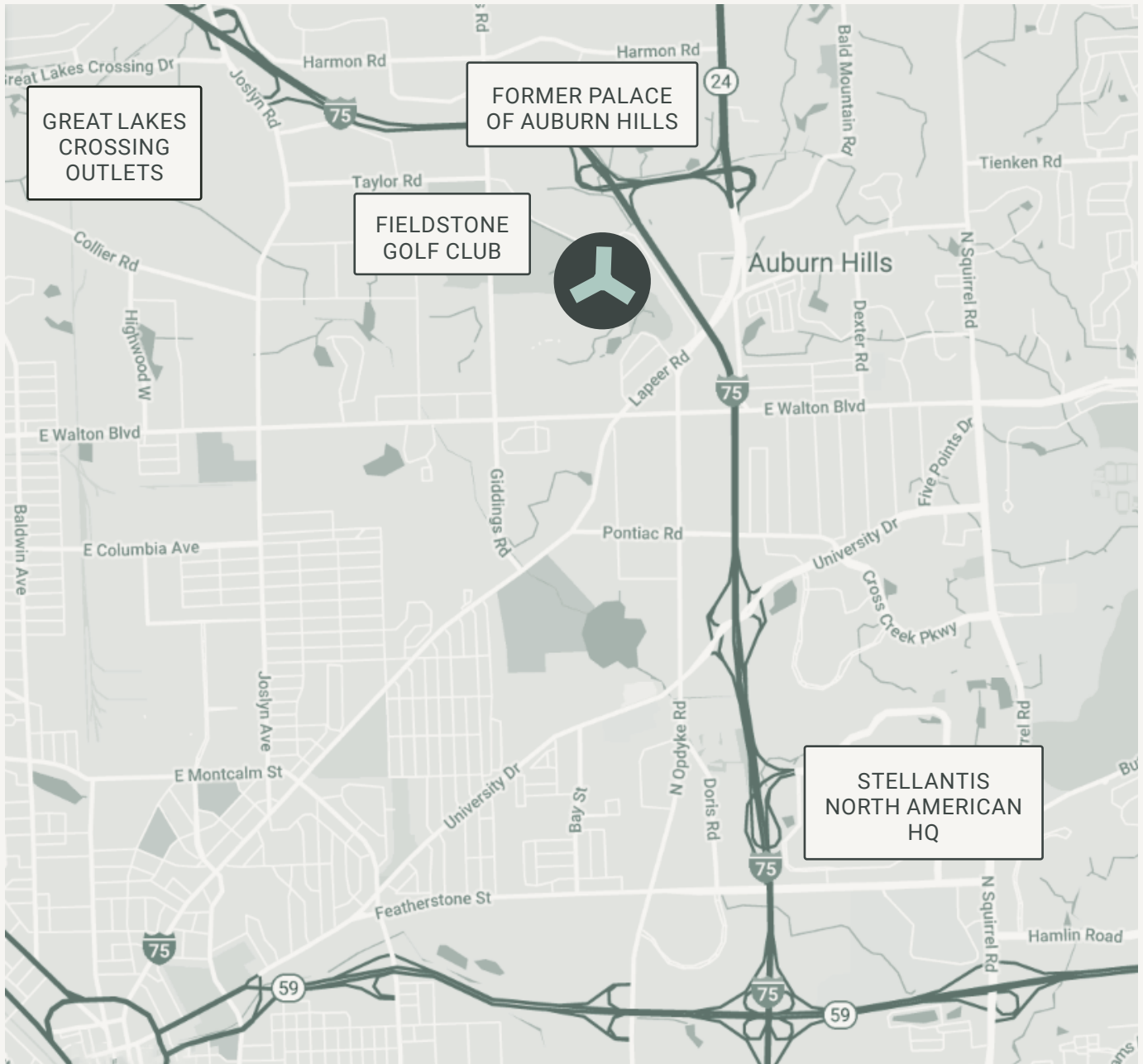
RENOVATED LOBBY



NEWMARK

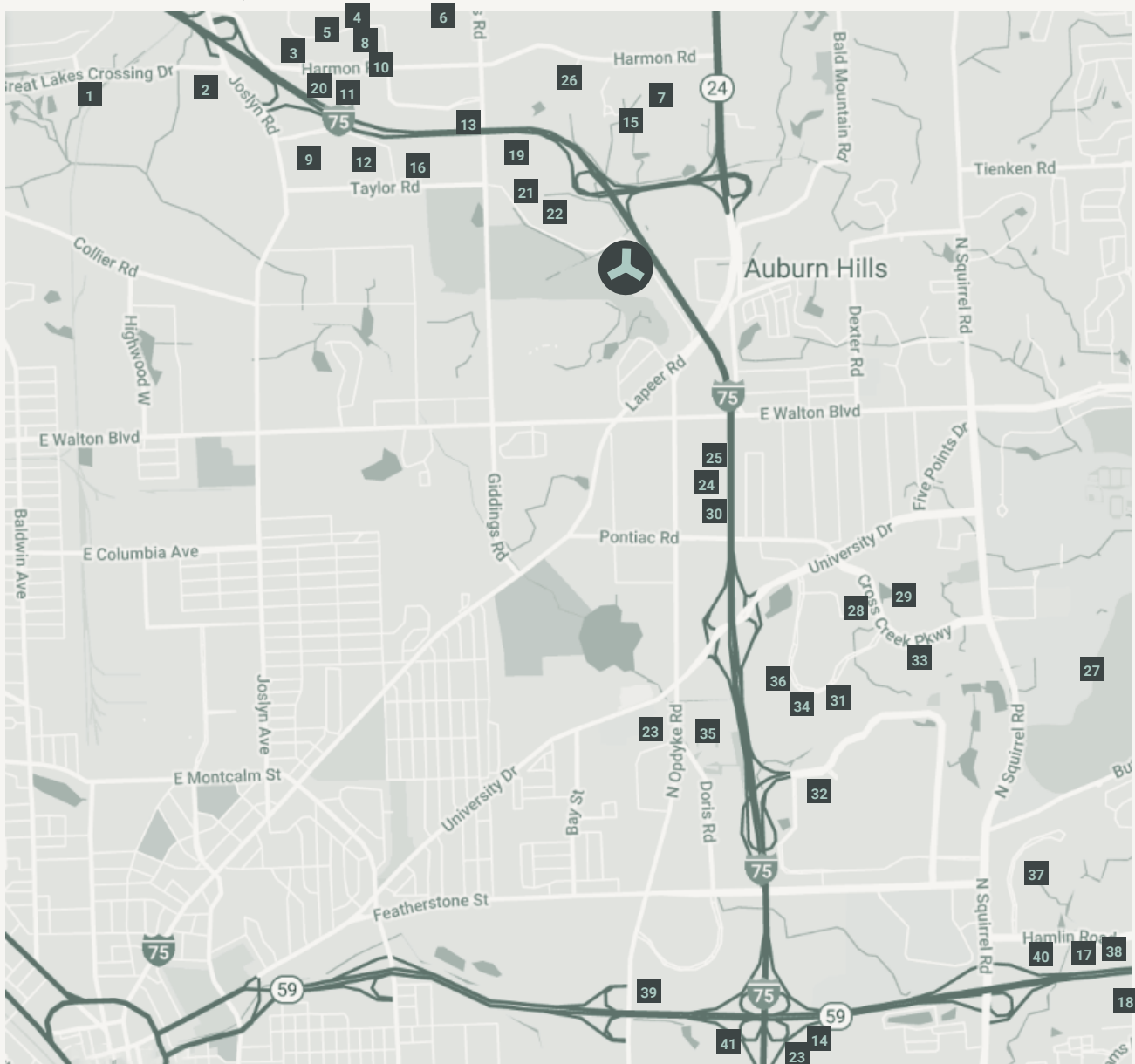

TIME EQUITIES INC.

2000 TAYLOR ROAD, AUBURN HILLS, MI



2000 TAYLOR

NEIGHBOR MAP



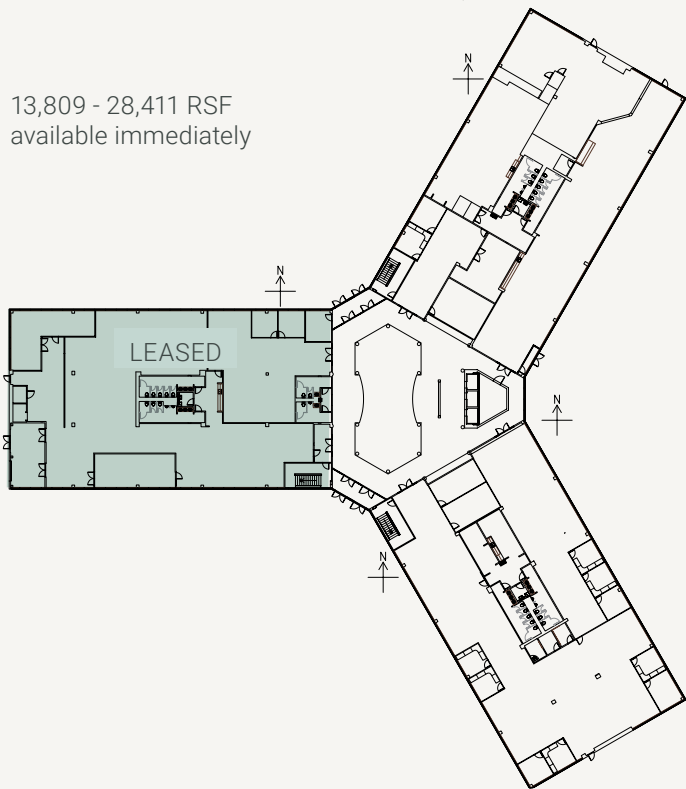
- | | | | |
|--------------------------------|------------------------------------|-----------------------|--------------------|
| 1 Great Lakes Crossing Outlets | 13 Valeo | 24 GKN Driveline | 35 Nexteer |
| 2 Topgolf | 14 Mahindra | 25 TFS | 36 Henniges |
| 3 Continental AG | 15 Borg Warner | 26 Brose | 37 Fanuc |
| 4 ABB | 16 AM General | 27 Oakland University | 38 Molex |
| 5 Dana | 17 Alpine Electronics of America | 28 Hutchinson | 39 Cooper Standard |
| 6 Roush | 18 Lear | 29 Dura | 40 Volkswagen |
| 7 Guardian Industries | 19 George P. Johnson | 30 Martinrea | 41 XPO Logistics |
| 8 Green Optics | 20 Continental Structural Plastics | 31 Incoe | |
| 9 Wabco | 21 Legacy Industries | 32 Stellantis | |
| 10 Samsung | 22 AAM | 33 Atlas Copco | |
| 11 Dupont | 23 TI Automotive | 34 Faurecia | |
| 12 Autoliv Americas | | | |

2000 TAYLOR

FIRST FLOOR

14,602 RSF R&D lab

13,809 - 28,411 RSF
available immediately

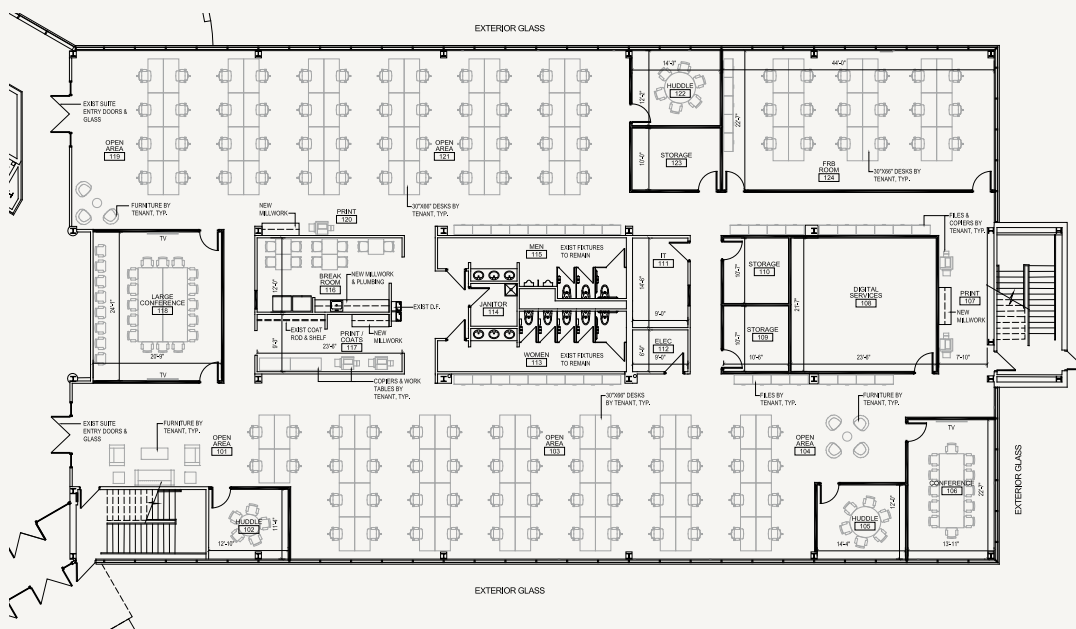


- R&D and Lab Space
- 18.7' Ceiling Height
- Elevator lift and grade-level access door
- Zoned R&D
- Perfect for engineering and design uses



13,809 RSF office

SAMPLE TEST FIT
Suite 1-3
13,809 RSF

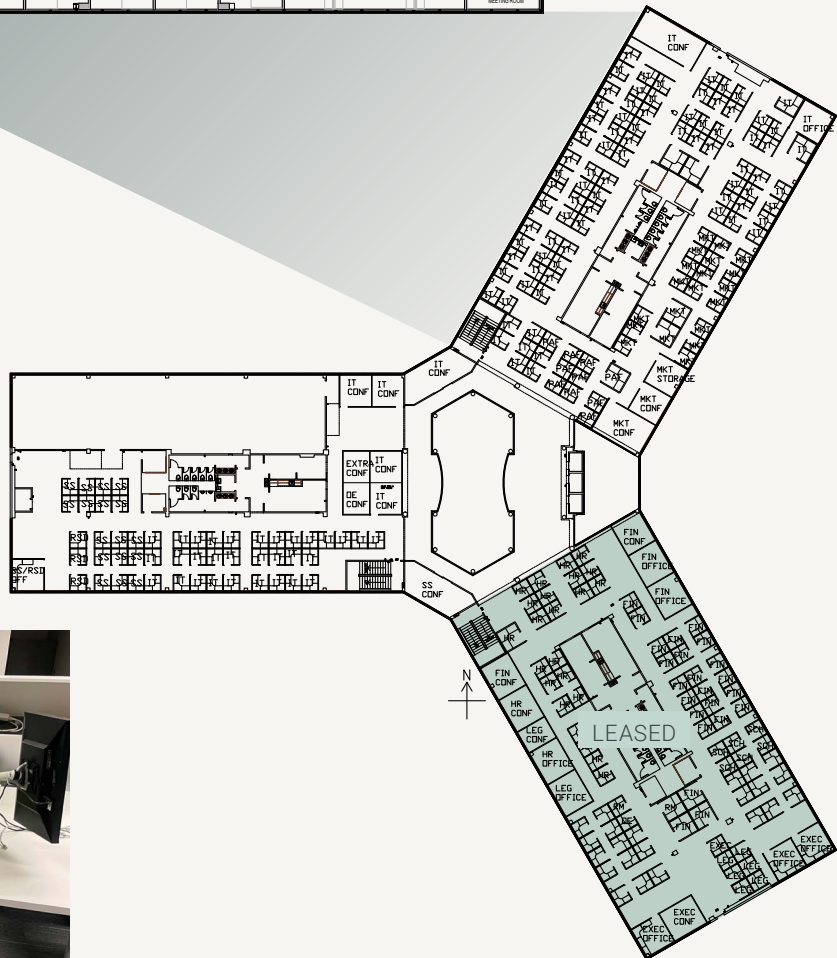
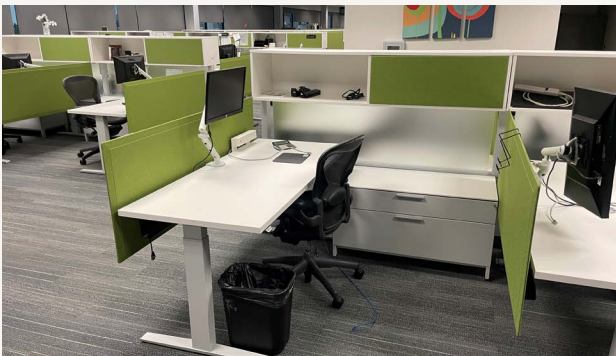
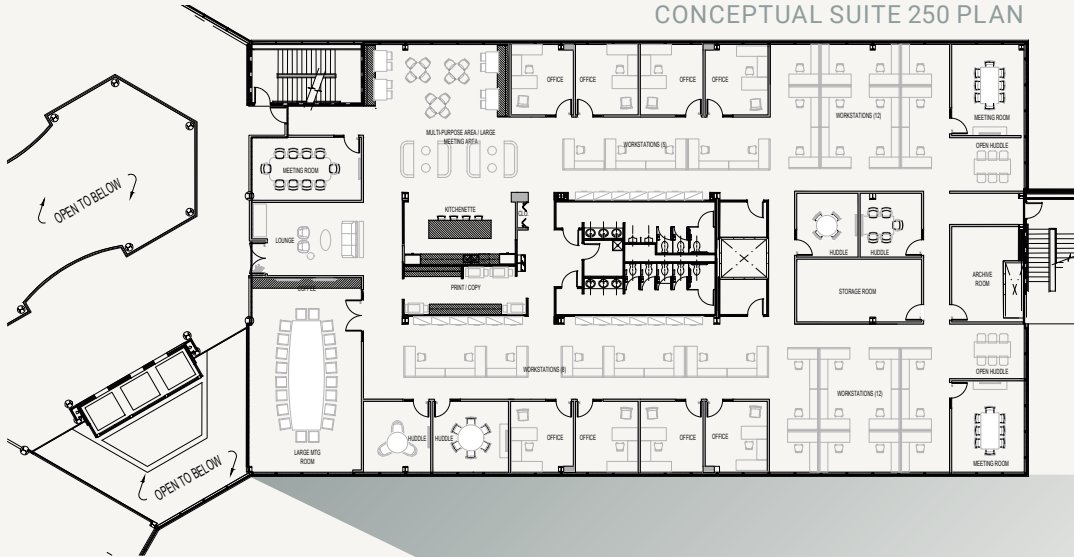


2000 TAYLOR

SECOND FLOOR

15,296 - 30,692 RSF
available immediately

CONCEPTUAL SUITE 250 PLAN



NEWMARK



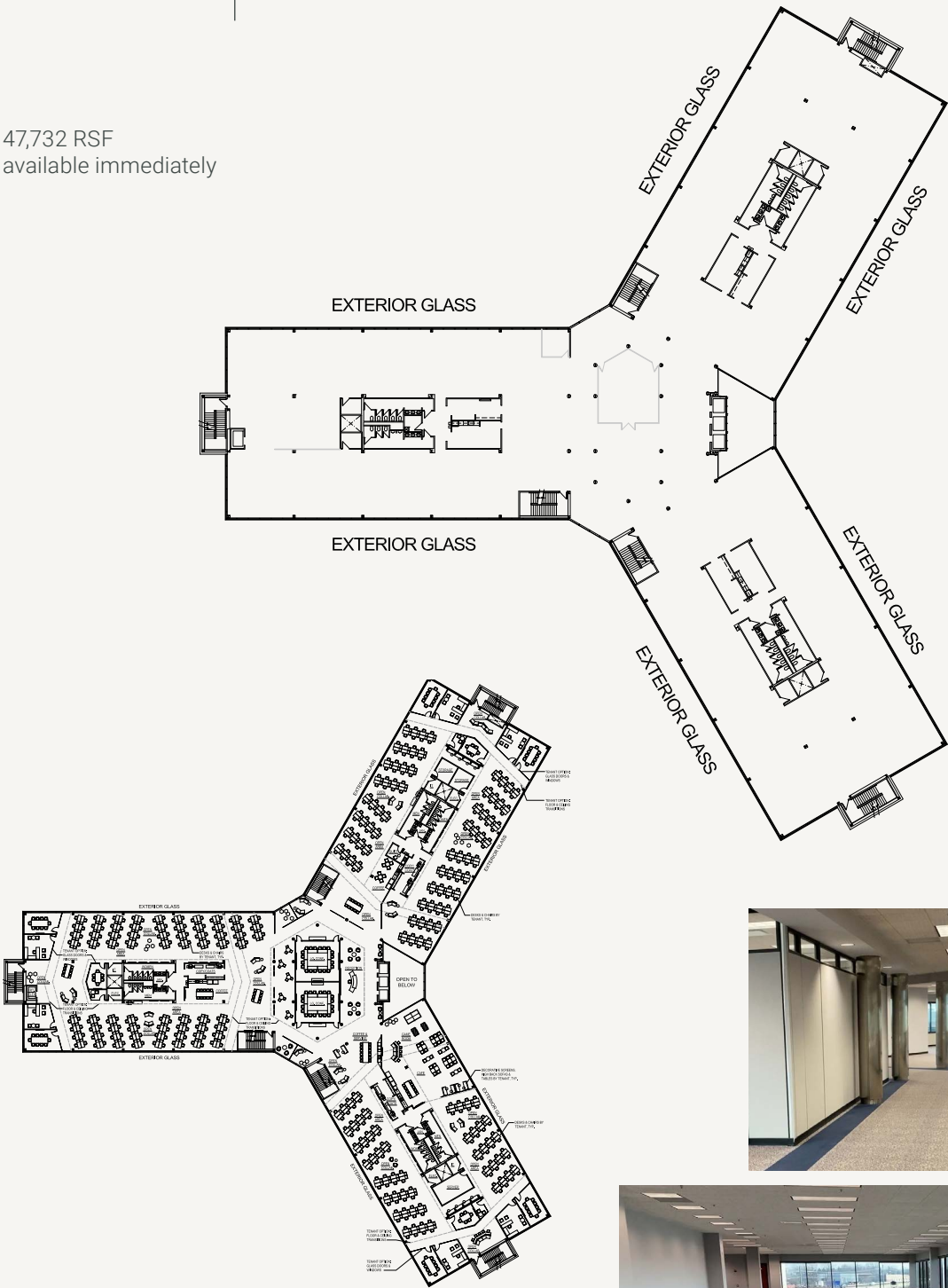
TIME EQUITIES INC.

2000 TAYLOR ROAD, AUBURN HILLS, MI

2000 TAYLOR

THIRD FLOOR

47,732 RSF
available immediately



2000 TAYLOR

FOURTH FLOOR

47,732 RSF
available immediately

