

Second Generation Restaurant Space

10155 E 29th Drive, Suite 160 | Denver, CO 80238



3,102 SF
+ Exclusive Outdoor
Covered Patio

Available

Contact
Broker

Rate & OPEX

Arrange showings
with Broker.

DO NOT DISTURB
existing tenant.

ABOUT THE PROPERTY

Join Hashtag, Cativella, Little Man Ice Cream, Datura Home, and Polished Hair & Nail Studio in this King Soopers anchored shopping center located in the affluent Central Park neighborhood.

- 3,102 RSF – 2nd Generation Restaurant
- Exclusive outdoor covered patio
- End cap unit with excellent exposure to MLK Blvd
- The trade area includes Central Park, North Aurora, the Anschutz Medical Campus, and the up-and-coming area near Stanley Marketplace

TRAFFIC CCOUNTS

MLK Jr. Blvd

Year: 2025 | drcog

15,478 VPD

DEMOGRAPHICS

	0.5 Miles	1 Mile	2 Miles
Population	4,762	19,009	68,523
Daytime Population	3,612	15,659	83,148
Avg. Household Income	\$229,955	\$179,461	\$130,862
Estimated Households	1,651	5,747	24,440

Year: 2025 | Source: esri

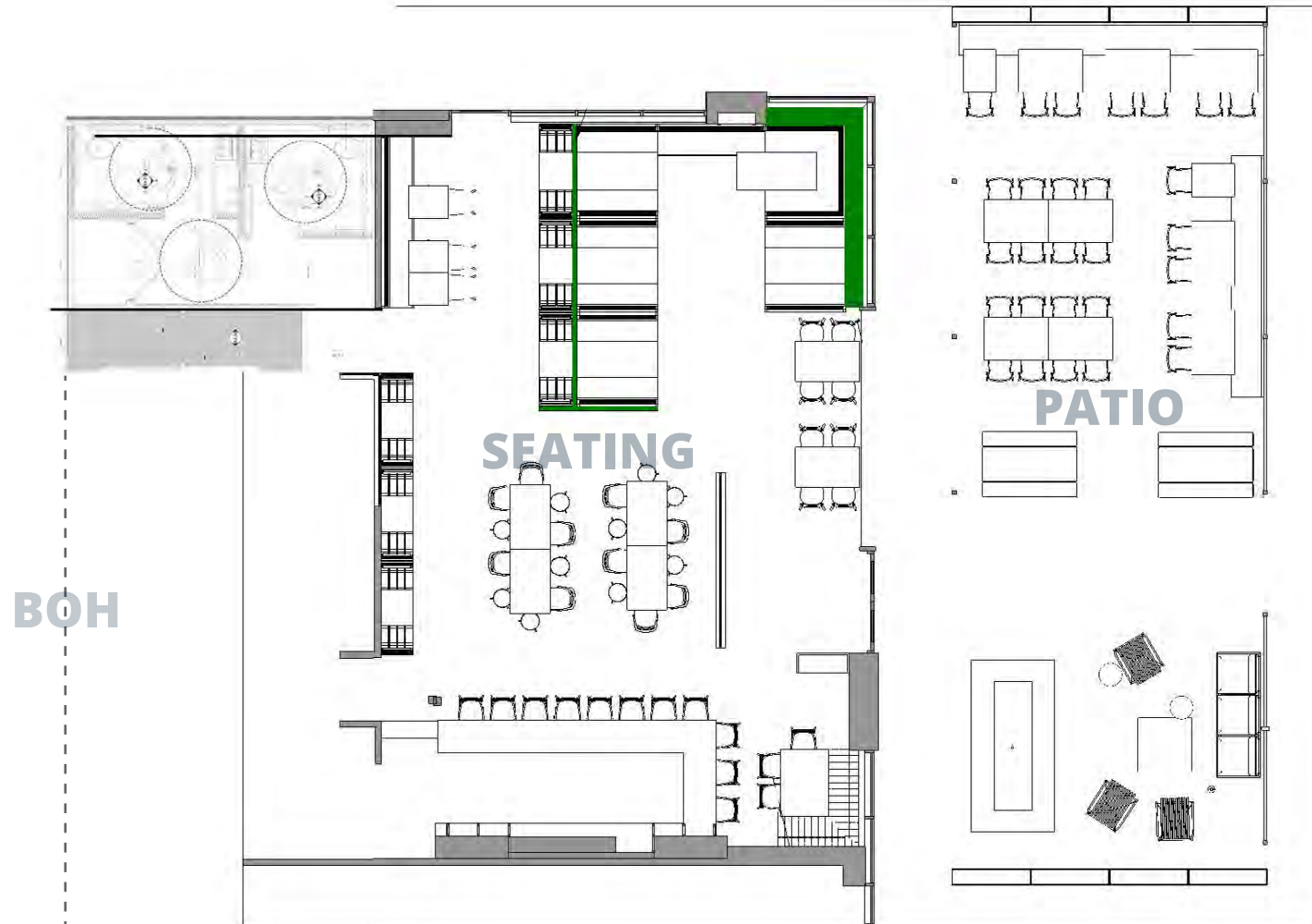
CONTACT

Andrew Clemens
303.390.5230
andrew.clemens@srsre.com

Tony Pierangeli
303.390.5257
tony.pierangeli@srsre.com

Floor Plan

10155 E 29th Drive, Suite 160 | Denver, CO 80238



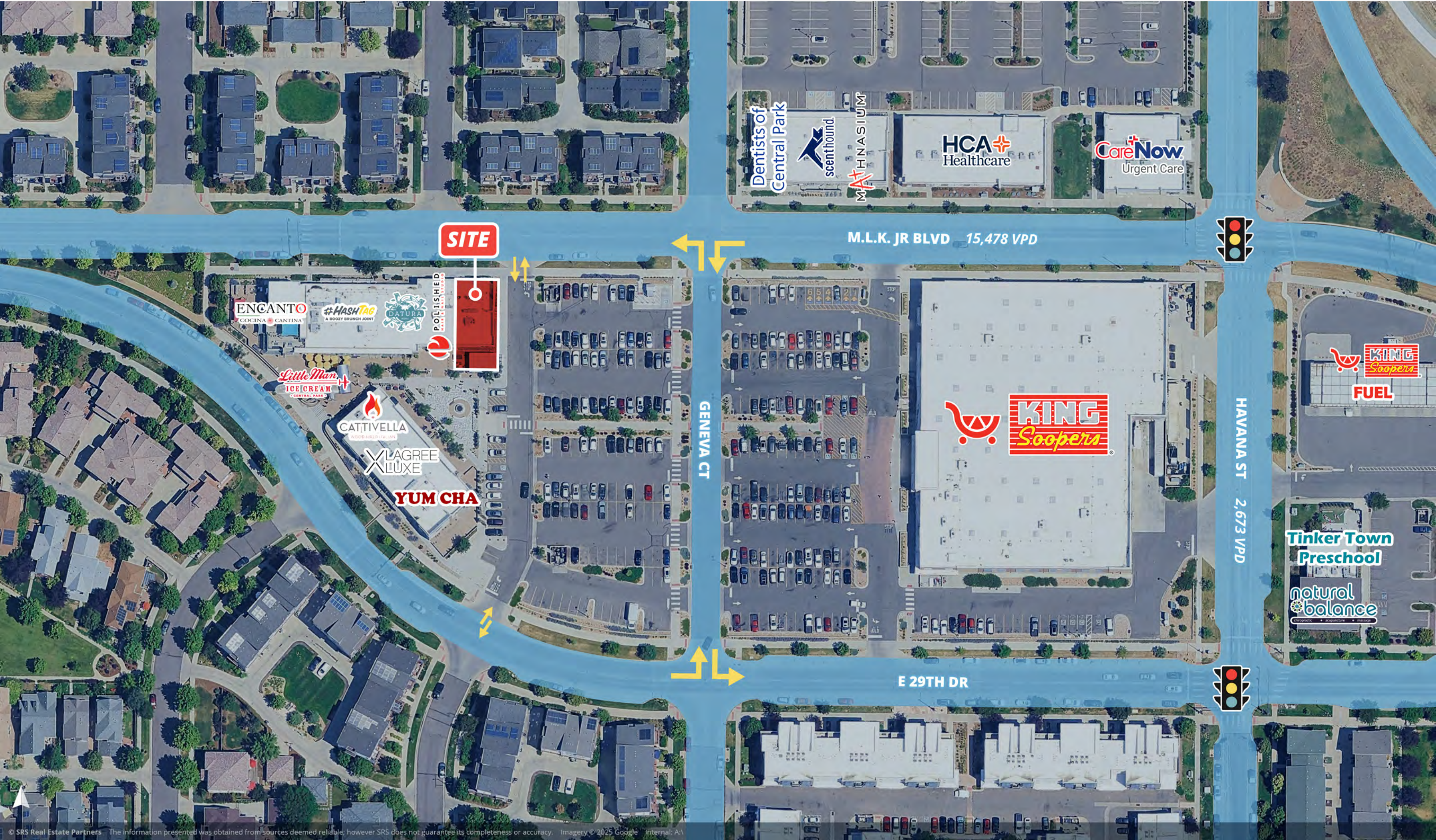
Property Photos

10155 E 29th Drive, Suite 160 | Denver, CO 80238



Site Aerial

10155 E 29th Drive, Suite 160 | Denver, CO 80238



SITE

M.L.K. JR BLVD 15,478 VPD



HAVANA ST 2,673 VPD



E 29TH DR

GENEVA CT

KING Soopers FUEL

Tinker Town Preschool

natural balance

ENCANTO COCINA CANTINA

#HASHTAG A BODY BRUNCH JOINT

DATURA

POLISHED

Little Man ICE CREAM

CATTIVELLA

LAGREE LUXE

YUM CHA

KING Soopers

HCA Healthcare

CareNow Urgent Care

Dentists of Central Park

scenthound

MANHATTAN



Demographics

10155 E 29th Drive, Suite 160 | Denver, CO 80238



DEMOGRAPHIC HIGHLIGHTS

Population

	0.5 miles	1 mile	2 miles
2025 Estimated Population	4,762	19,009	68,523
2030 Projected Population	4,812	20,552	73,020
Proj. Annual Growth 2025 to 2030	0.21%	1.57%	1.28%

Daytime Population

2025 Daytime Population	3,612	15,659	83,148
Workers	1,349	7,357	50,589
Residents	2,263	8,302	32,559

Income

2025 Est. Average Household Income	\$229,955	\$179,461	\$130,862
2025 Est. Median Household Income	\$200,372	\$139,545	\$88,914

Households & Growth

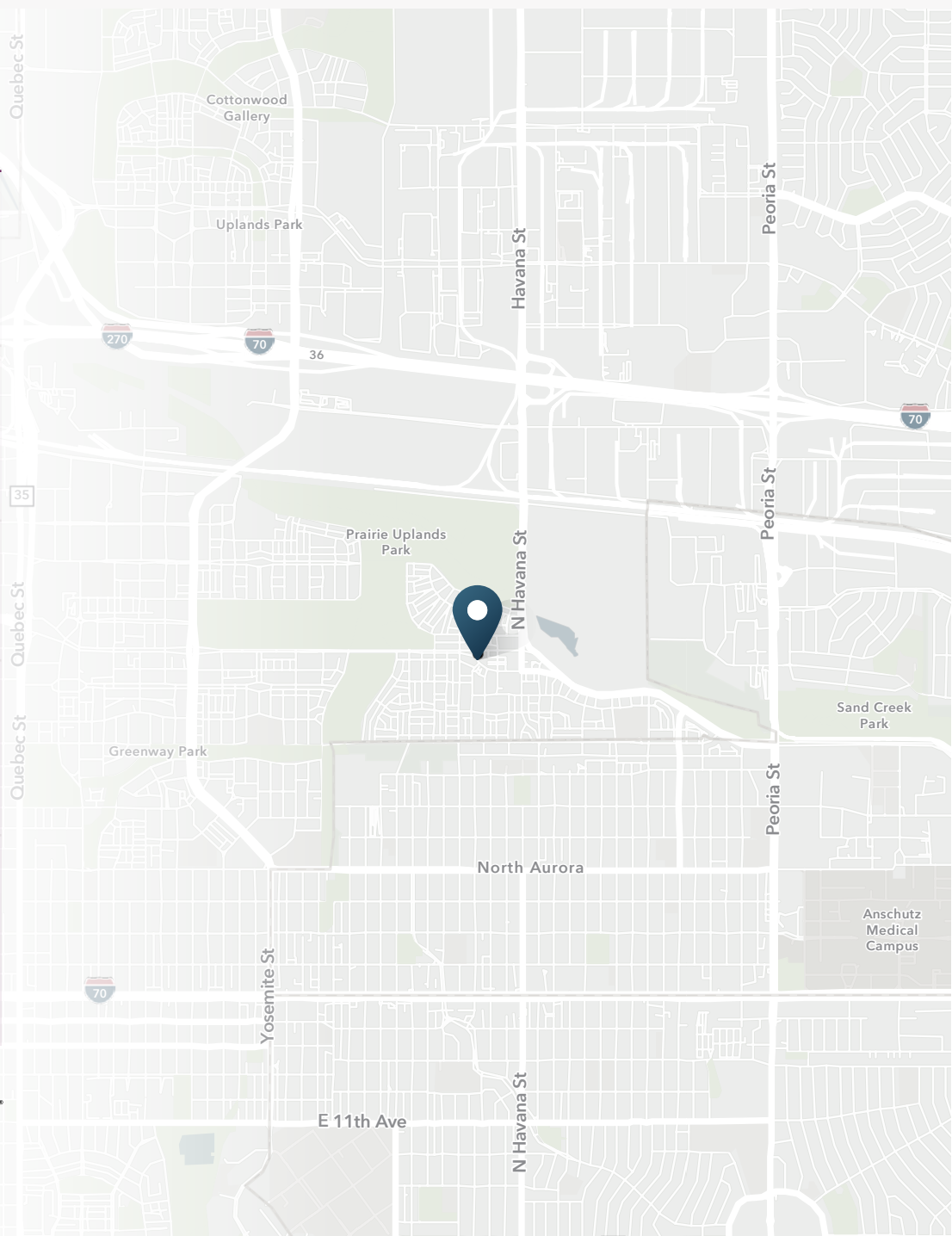
2025 Estimated Households	1,651	5,747	24,440
2030 Estimated Households	1,655	6,286	26,165
Proj. Annual Growth 2025 to 2030	0.05%	1.81%	1.37%

Race & Ethnicity

2025 Est. White	74%	56%	44%
2025 Est. Black or African American	6%	11%	13%
2025 Est. Asian or Pacific Islander	4%	4%	7%
2025 Est. American Indian or Native Alaskan	0%	1%	2%
2025 Est. Other Races	16%	27%	33%
2025 Est. Hispanic (Any Race)	12%	28%	36%

> **Want more?** Contact us for a complete demographic, foot-traffic, and mobile data insights report.

SOURCE





SRS Real Estate Partners
1875 Lawrence Street, Suite 850
Denver, CO 80202
303.572.1800

Andrew Clemens
303.390.5230
andrew.clemens@srsre.com

Tony Pierangeli
303.390.5257
tony.pierangeli@srsre.com

SRSRE.COM

©2025 SRS Real Estate Partners LLC. All Rights Reserved.

The information presented was obtained from sources deemed reliable;
however SRS Real Estate Partners does not guarantee its completeness or accuracy.