

FOR LEASE

Owned and Operated by



Swan Island Industrial Center

3006 N Wygant St, Portland, OR 97217

±14,232 SF Shell



**LEASING INFO
& CONTACT**

Steven Klein
Peter Stalick
Brendan Murphy

(503) 221-2260 / steven.klein@kidder.com
(503) 221-2272 / peter.stalick@kidder.com
(503) 721-2705 / brendan.murphy@kidder.com



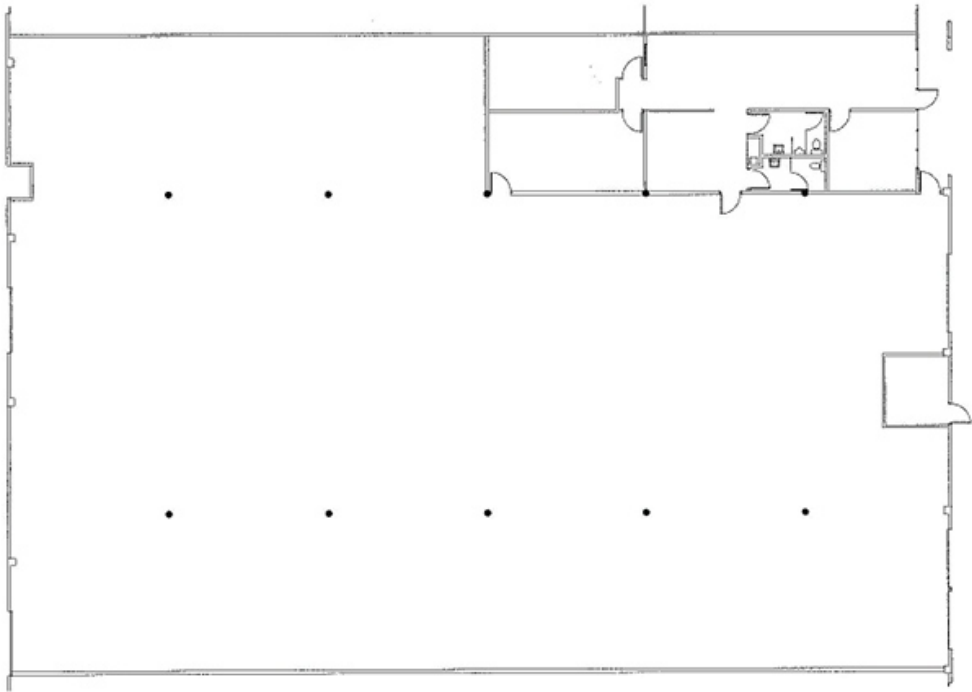
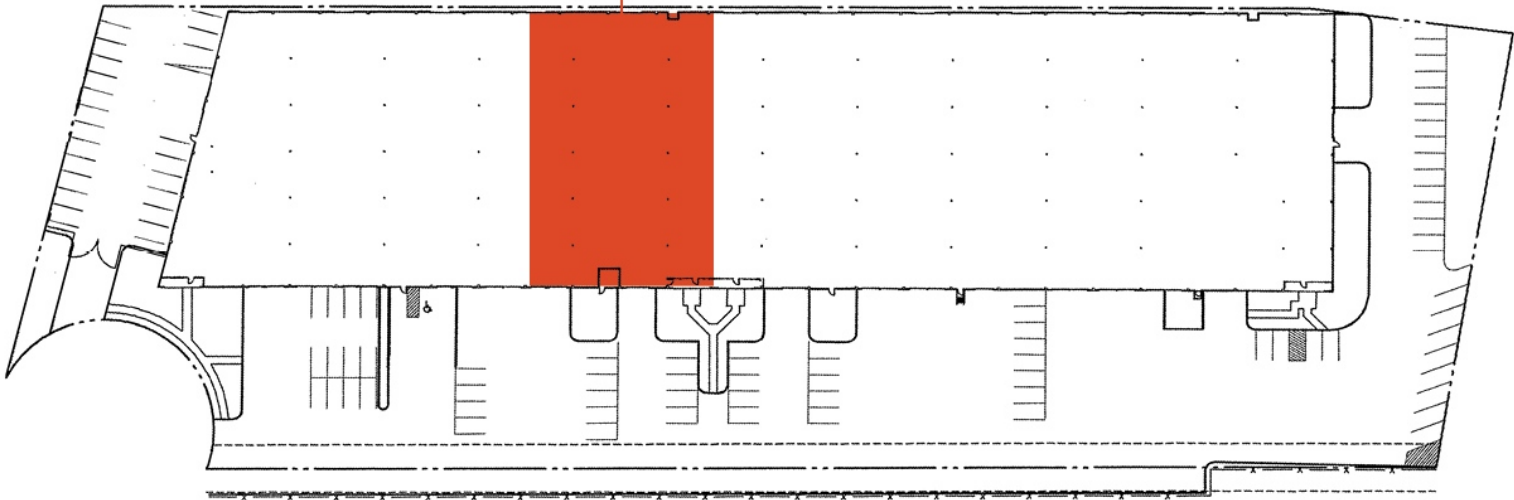
This is not an offer or acceptance of an offer to lease space. A lease will only be offered or made in a written agreement signed by landlord. No representation or warranty of any kind is made by landlord unless set forth in a written definitive lease executed by the landlord.

OVERVIEW

Swan Island Industrial Center is a first class, professionally managed industrial park with a unique centralized location ideal for distribution uses.



14,232 SF SHELL
1,759 SF OFFICE



Suite 3006 Features

Shell SF	14,232 SF
Office SF	1,759 SF
Clear Height	22' clear height
Dock Doors	2 dock-high doors
Grade Door	1 grade-level door

Sprinkler	Wet sprinkler system
Lease Rate	Call for quote
Location	Located on Swan Island, just minutes from I-5, providing easy access to the entire Portland Metro area. Nearby major companies include FedEx, UPS, Daimler, Vigor, and more.