

# 11,525 SF

**14100 E. 35th Place - Bldg 4, Suite 101**  
**Aurora, Colorado 80011**

Upland Distribution Center



- Upland Distribution Center I is an 81,200 SF industrial building, located in the heart of the industrial corridor
- Easy access to I-70 & I-225, and proximity to I-270 & I-76
- 10 miles to Denver International Airport; 14 miles to Downtown Denver, and close to restaurants, retail and hotels.

## Property Features

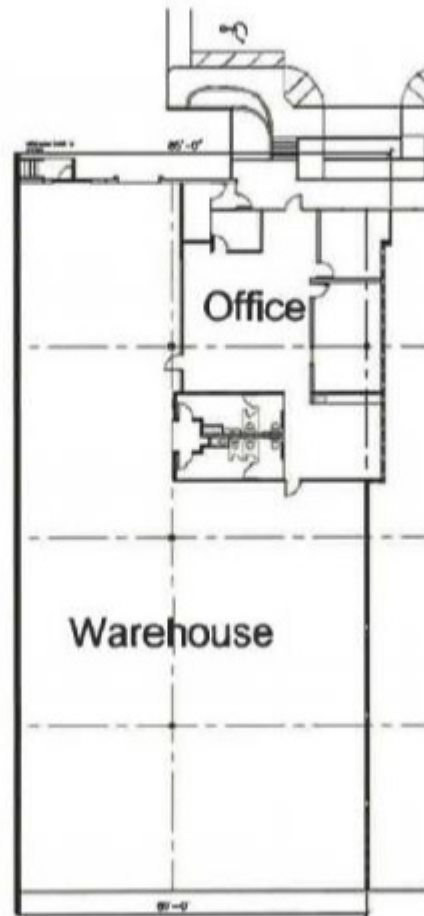
Available Space	11,525 SF
Office SF	2,583 SF
Warehouse Area	8,942 SF
Clear Height	22'
Dock Doors	2
Drive-in Doors	None
Lease Rate	To Quote
Car Parking Spaces	17
Electrical Service	400 amps
Sprinkler	ESFR
Lighting	LED Motion Sensor



Unlock the full potential of your  
**warehouse with one strategic,  
single-source partner.**



**Exhibit A: SITE PLAN**



**JLL**  
**Carmon Hicks**  
carmon.hicks@jll.com  
ph +1 303 217 7975  
jll.com

**JLL**  
**Jason White**  
jason.white@jll.com  
cell +1 720 935 2168  
jll.com

**Prologis**  
**Tressa Shiplett**  
tshiplett@prologis.com  
ph +1 303 567 5308  
prologis.com