

## Specifications

±1,264 SF  
BUILDING SIZE

Auto Dealer with 2-Bay Repair Shop  
and Office  
CURRENT USE

Fast Food Restaurant, Coffee Shop,  
Bank, Gas Station, Car Wash, Office,  
Garage, Cannabis Retail Store  
PERMITTED USES

±0.19 AC (Block 105, Lot 11)  
LOT SIZE

\$12,324.63  
TAXES (2025)

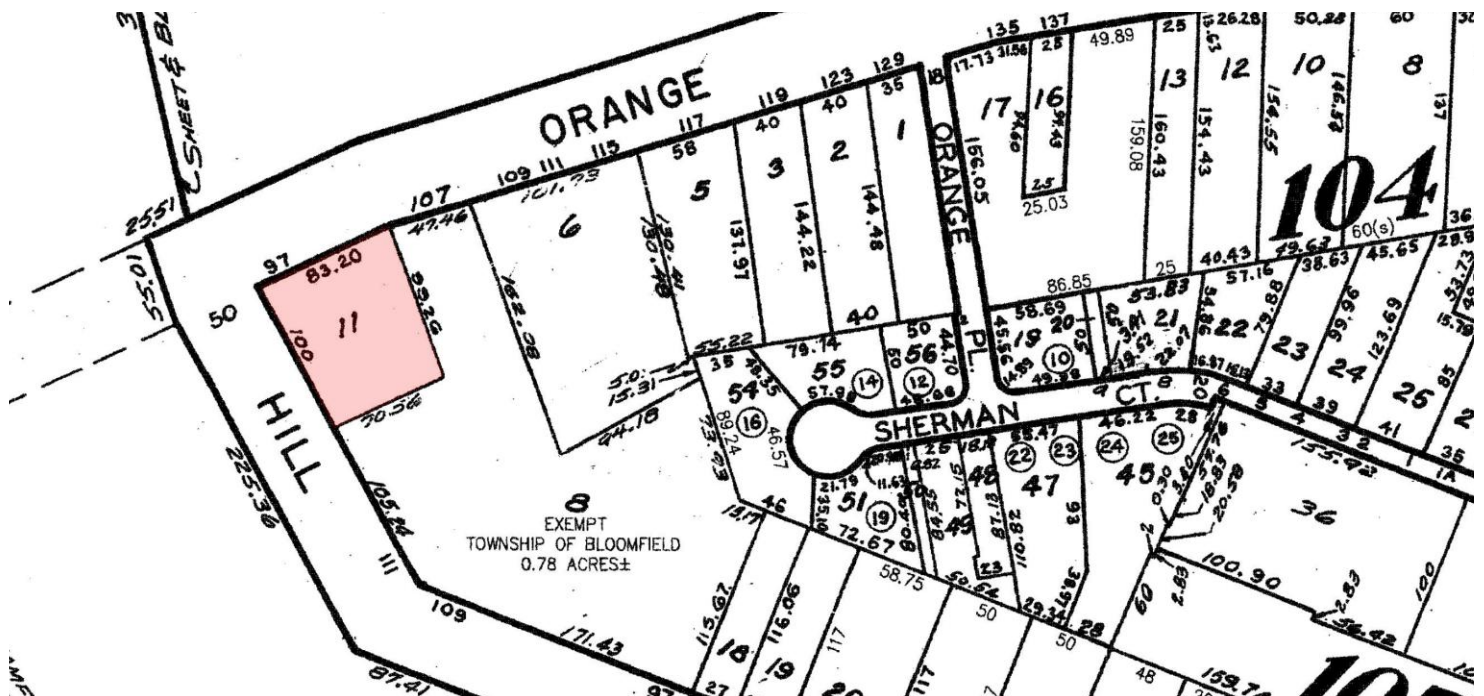
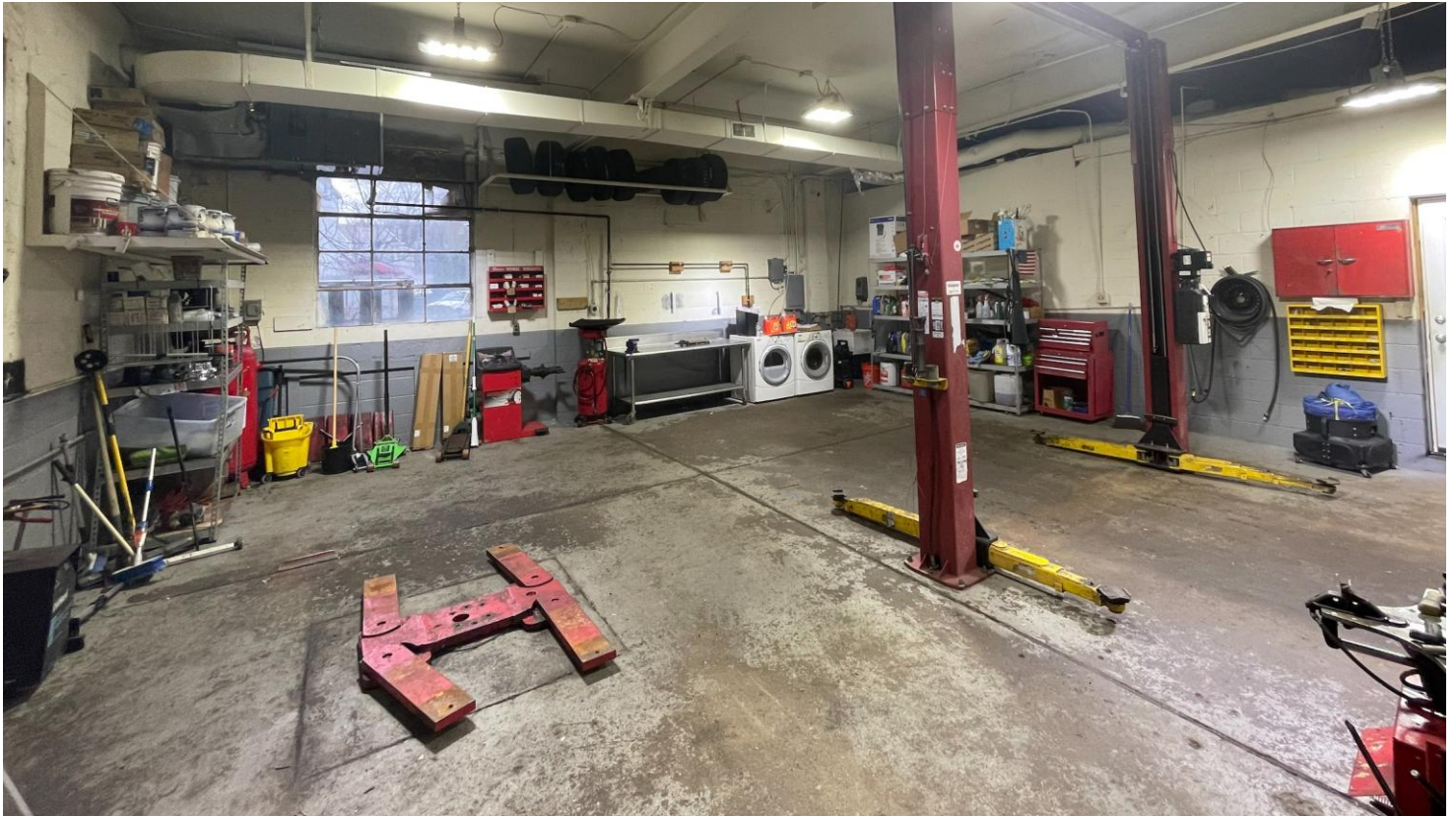
CBD (Central Business District)  
ZONING

Perfect for Contractors  
Across from Home Depot  
Multifamily Development Possible  
ACCESSIBILITY

For additional property information or to arrange an inspection,  
please contact the exclusive broker:

Juan Disla  
Director  
973.379.6644 x 153  
JD@blauberg.com

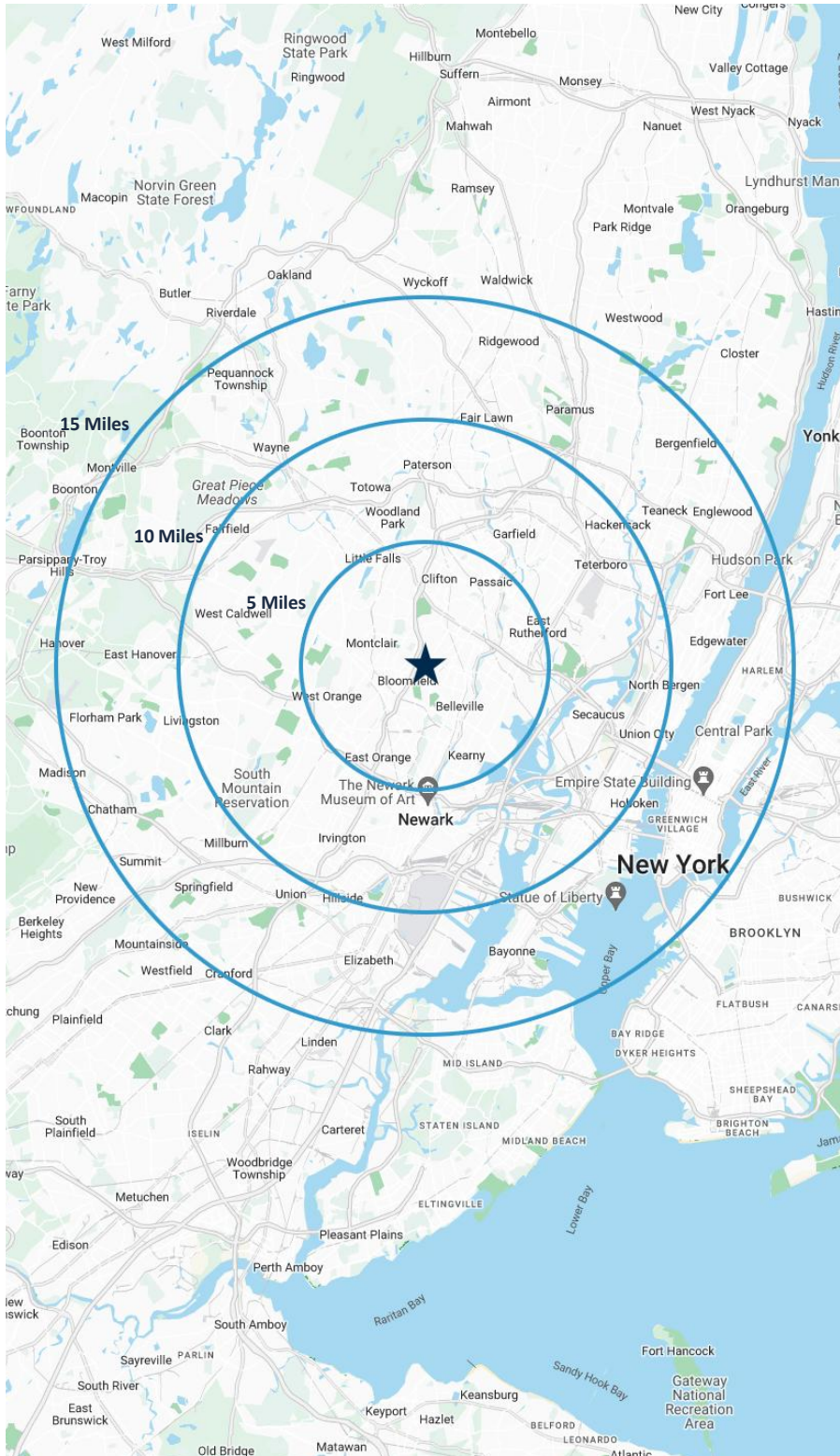




For additional property information or to arrange an inspection,  
please contact the exclusive broker:

Juan Disla  
Director  
973.379.6644 x 153  
JD@blauberg.com





### 5 MILES

- Total Population: 816,378
- Households: 309,861
- Median Household Income: \$92,354
- Average Household Size: 2.6
- Transportation to Work: 429,372
- Labor Force: 652,225

### 10 MILES

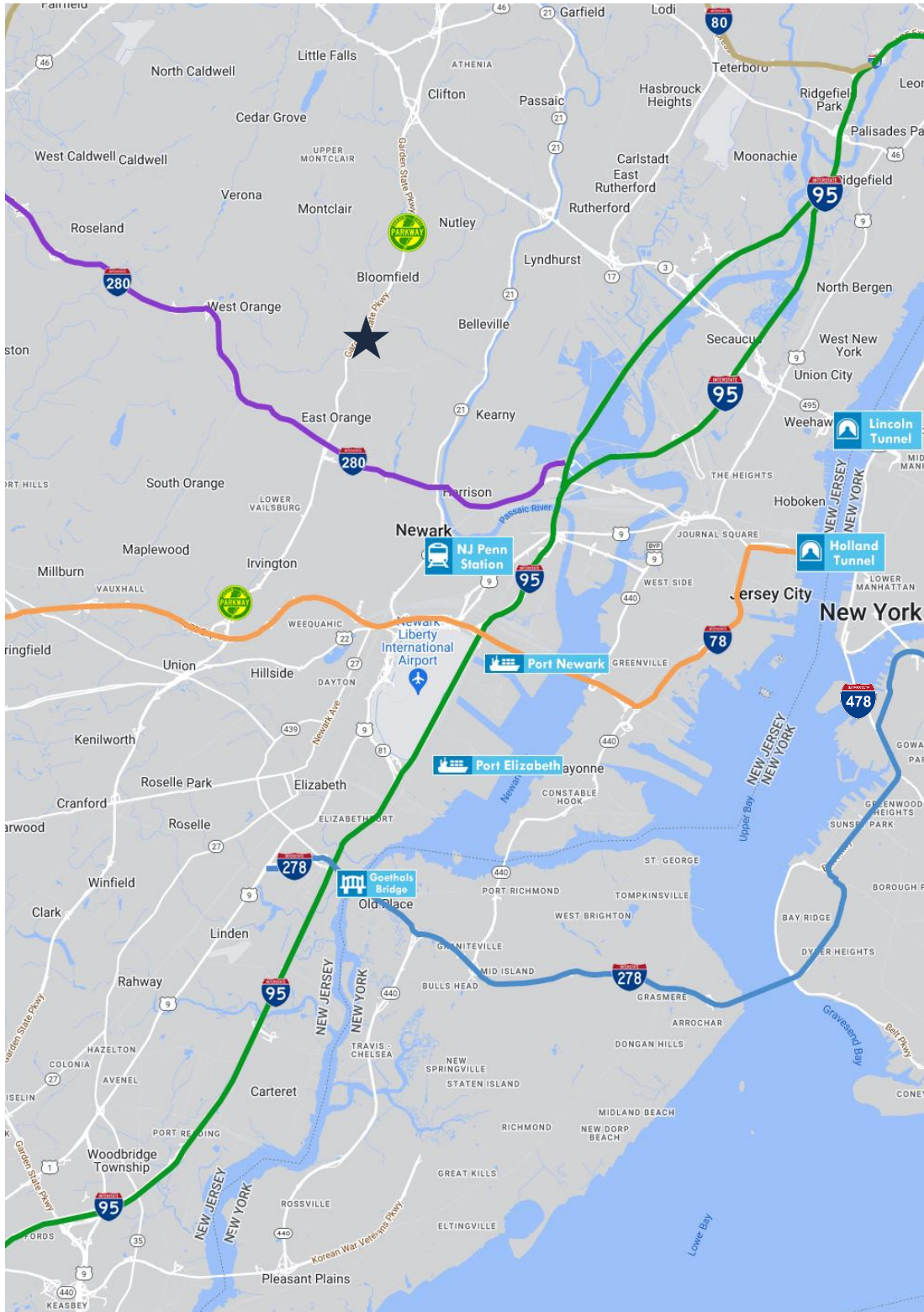
- Total Population: 2.5M
- Households: 939,743
- Median Household Income: \$102,736
- Average Household Size: 2.6
- Transportation to Work: 1.36M
- Labor Force: 2.01M

### 15 MILES

- Total Population: 6.82M
- Households: 2.8M
- Median Household Income: \$117,291
- Average Household Size: 2.4
- Transportation to Work: 3.7M
- Labor Force: 5.63M

For additional property information or to arrange an inspection,  
please contact the exclusive broker:

Juan Disla  
Director  
973.379.6644 x 153  
JD@blauberg.com



## ACCESSIBILITY



1.0 MI  
GSP



3.4 MI  
I-280



6.4 MI  
Penn Station



6.5 MI  
I-78



8.5 MI  
US Hwy 1 & 9



8.7 MI  
I-95 Exit 15



11.1 MI  
Newark Airport



11.5 MI  
Ports Newark  
& Elizabeth



13.0 MI  
Holland Tunnel



16.4 MI  
Lincoln Tunnel

For additional property information or to arrange an inspection,  
please contact the exclusive broker:

Juan Disla  
Director  
973.379.6644 x 153  
JD@blauberg.com