



## Mericast Center

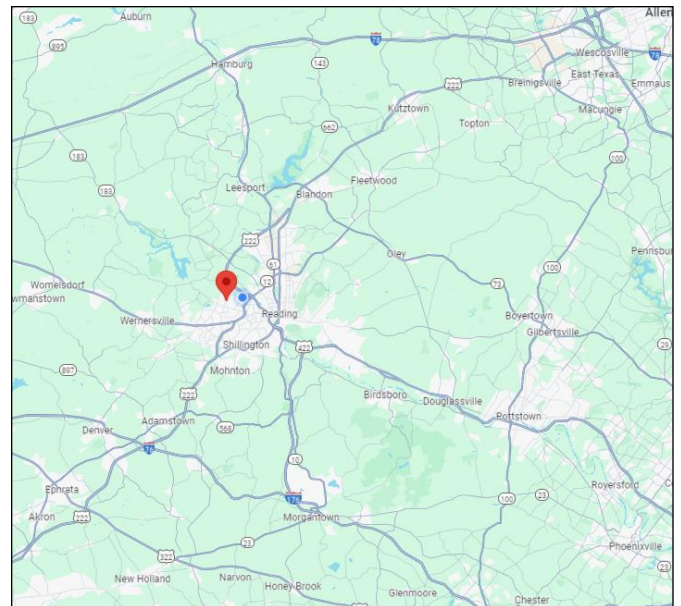
10-20 Commerce Drive  
Wyomissing PA 19610

### Property Features

- Multi-building office complex
- Convenient Wyomissing location
- Ample parking
- Professionally managed

**Kyle A. McKechnie**  
Vice President Sales & Leasing

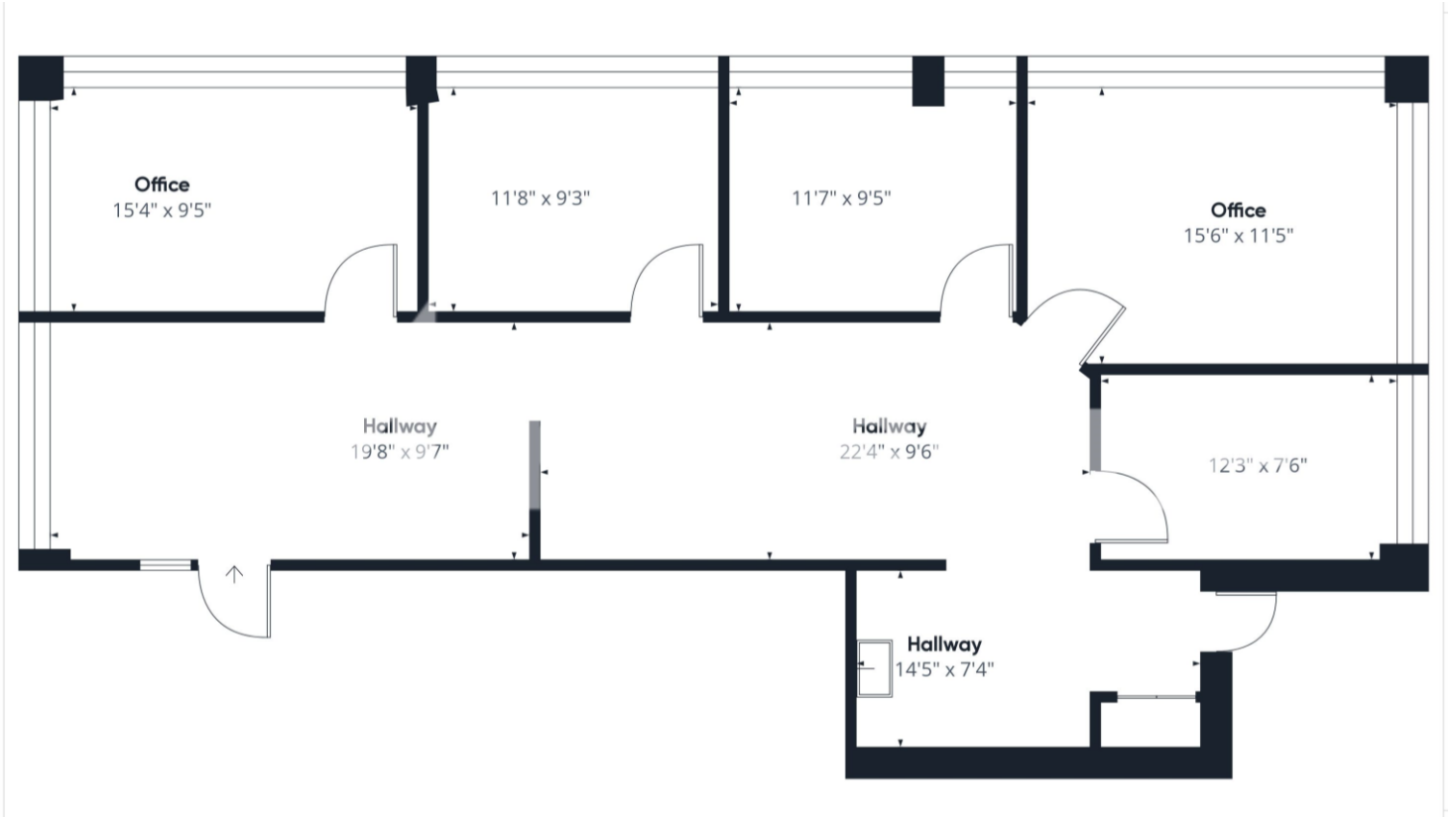
610 370 8522 • [kmckechnie@naikeystone.com](mailto:kmckechnie@naikeystone.com)



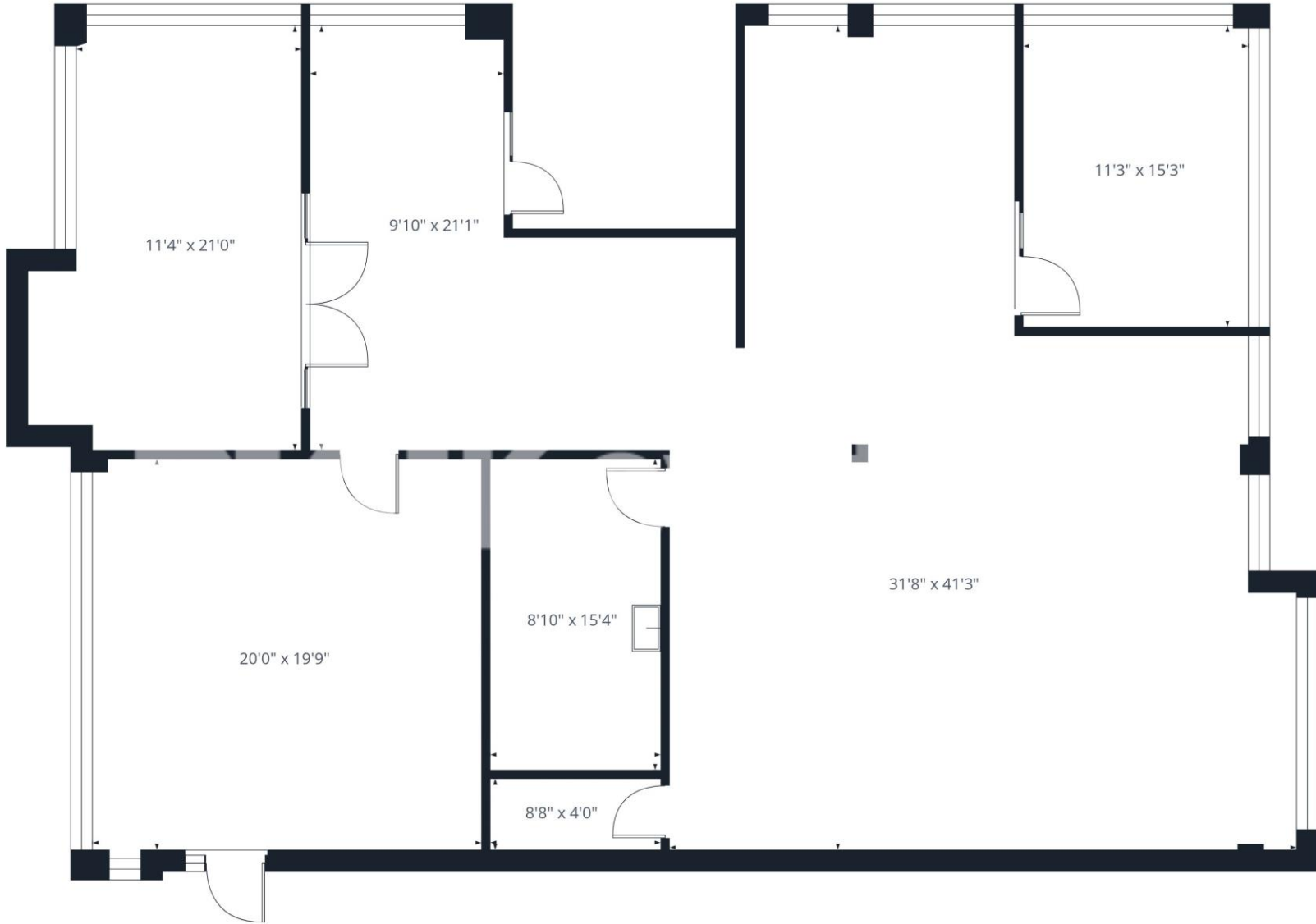
875 Berkshire Blvd, Suite 102  
Wyomissing, PA 19610  
+1 610 779 1400  
[naikeystone.com](http://naikeystone.com)

NO WARRANTY OR REPRESENTATION, EXPRESS OR IMPLIED, IS MADE AS TO THE ACCURACY OF THE INFORMATION CONTAINED HEREIN, AND THE SAME IS SUBMITTED SUBJECT TO ERRORS, OMISSIONS, CHANGE OF PRICE, RENTAL OR OTHER CONDITIONS, PRIOR SALE, LEASE OR FINANCING, OR WITHDRAWAL WITHOUT NOTICE, AND OF ANY SPECIAL LISTING CONDITIONS IMPOSED BY OUR PRINCIPALS NO WARRANTIES OR REPRESENTATIONS ARE MADE AS TO THE CONDITION OF THE PROPERTY OR ANY HAZARDS CONTAINED THEREIN ARE ANY TO BE IMPLIED.

Building	Suite	Size	Description
12	B	1,422SF	Professional office last used by a financial advisor. Configured with a conference room, 4 private offices and a kitchenette.
14	A	2,806 SF	Professional Office with two conference rooms, breakroom, large open area for workstations and two private offices.



12 Commerce  
Suite B



14 Commerce  
Suite A

For Lease  
Mericast Center

Photos



12 Commerce  
Suite B



**NAI**Keystone



For Lease  
Mericast Center

