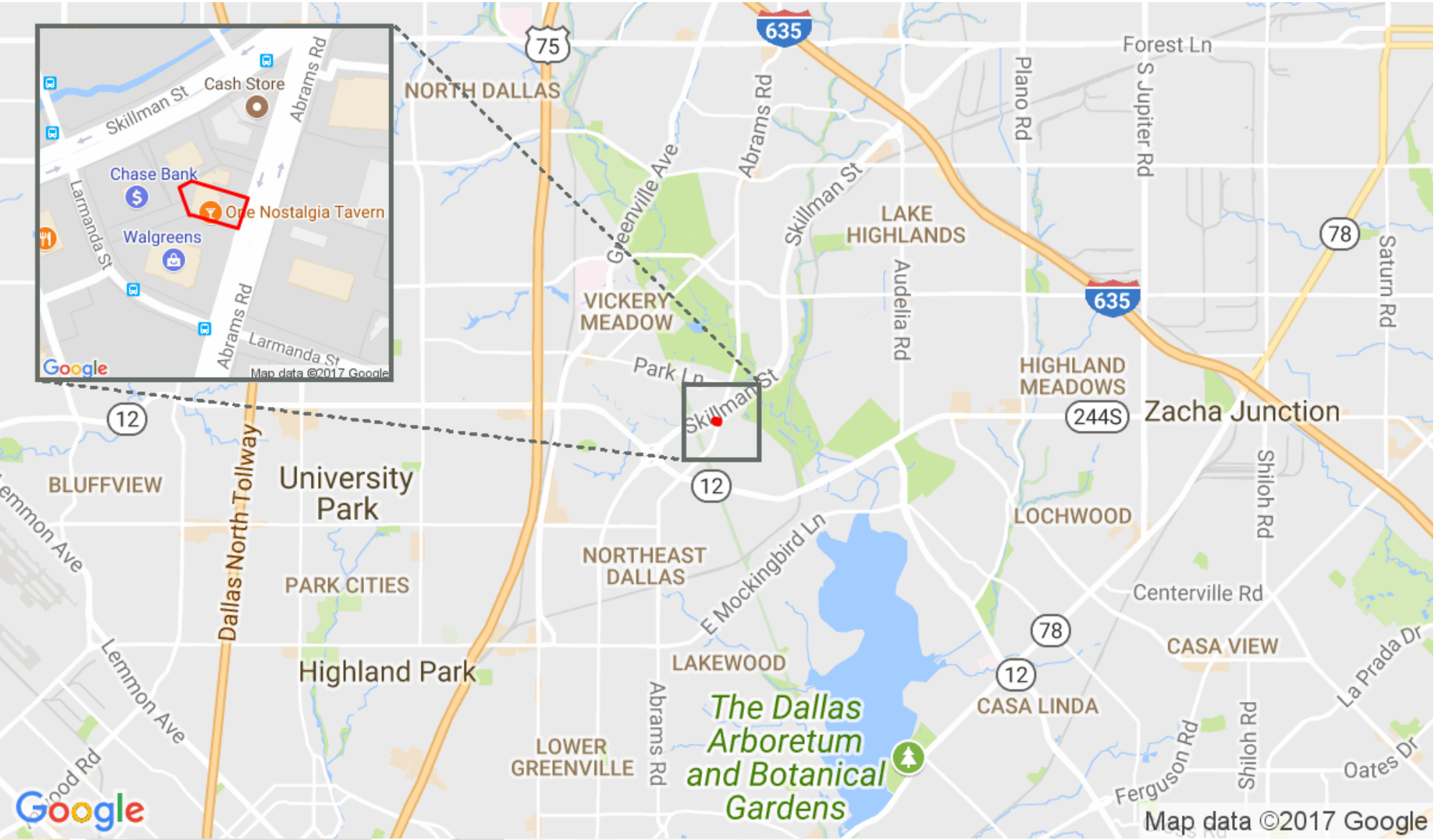


# Skillman Abrams Shopping Center

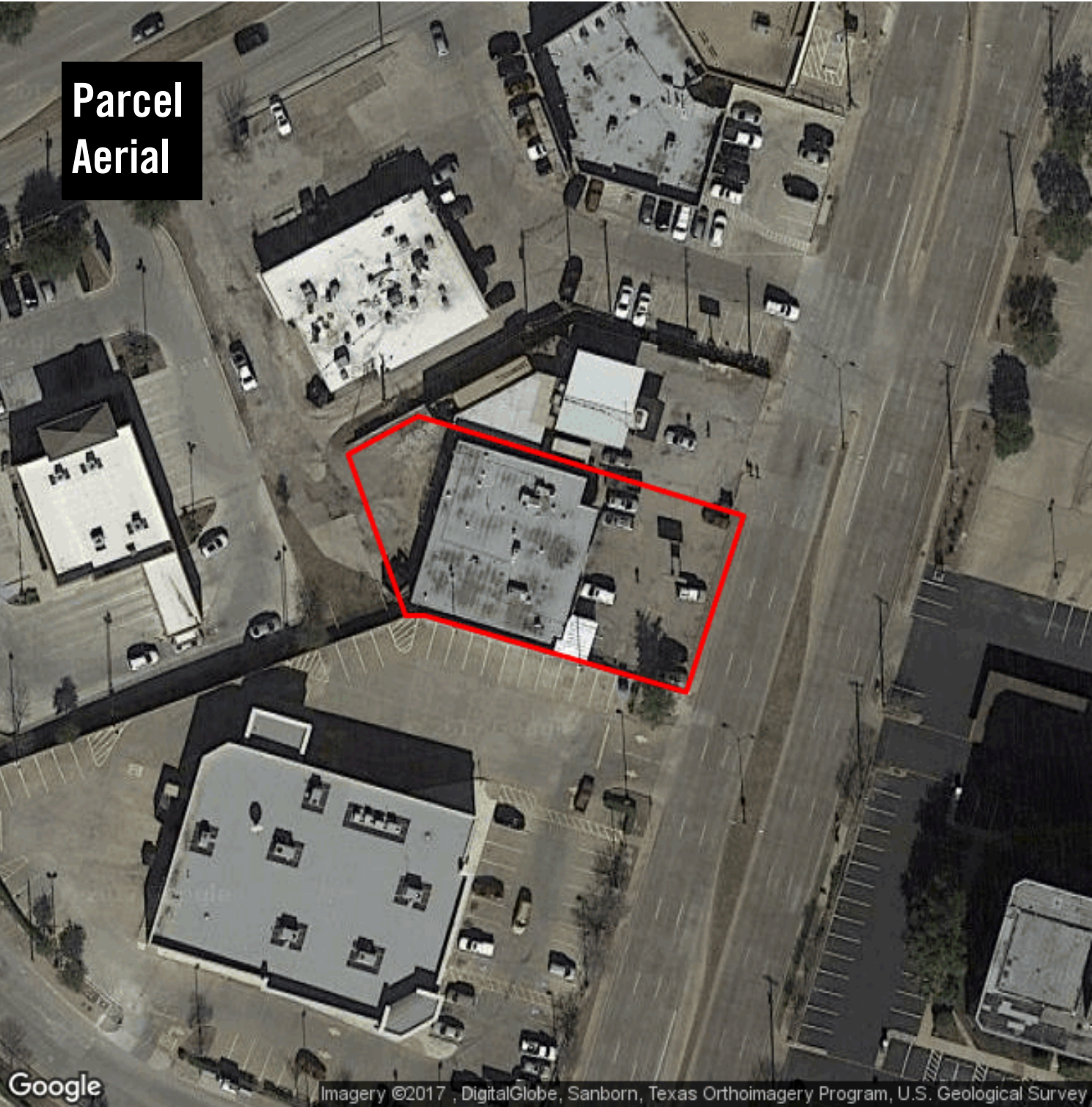
Republic Realty Advisors

6510 Abrams Rd Suite 125 Dallas, TX 75231 | 214-444-8781



# Skillman Abrams Shopping Center

Republic Realty Advisors 6510 Abrams Rd Suite 125 Dallas, TX 75231 | 214-444-8781



# Skillman Abrams Shopping Center

6523-6525 Abrams Rd  
Dallas, TX 75231



**Bill Bell**  
bill@republicra.com  
214-444-8781



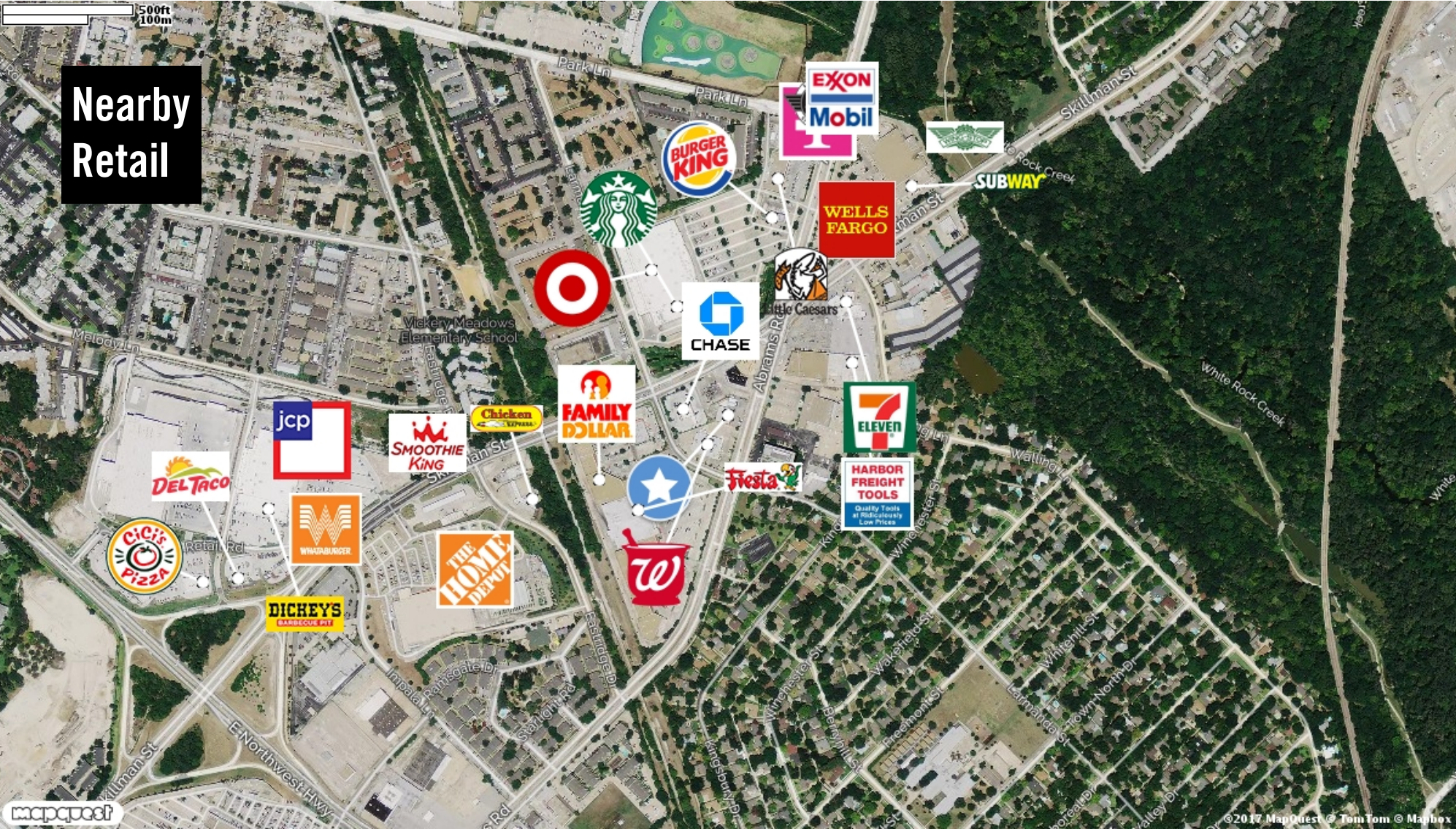
This information supplied herein is from sources we deem reliable. It is provided without any representation, warranty or guarantee, expressed or implied as to its accuracy. Prospective Buyer or Tenant should conduct an independent investigation and verification of all matters deemed to be material, including, but not limited to, statements of income and expenses. Consult your attorney, accountant, or other prof. advisor.



# Skillman Abrams Shopping Center

Republic Realty Advisors

6510 Abrams Rd Suite 125 Dallas, TX 75231 | 214-444-8781



**Bill Bell**  
bill@republicra.com  
214-444-8781



This information supplied herein is from sources we deem reliable. It is provided without any representation, warranty or guarantee, expressed or implied as to its accuracy. Prospective Buyer or Tenant should conduct an independent investigation and verification of all matters deemed to be material, including, but not limited to, statements of income and expenses. Consult your attorney, accountant, or other professional advisor

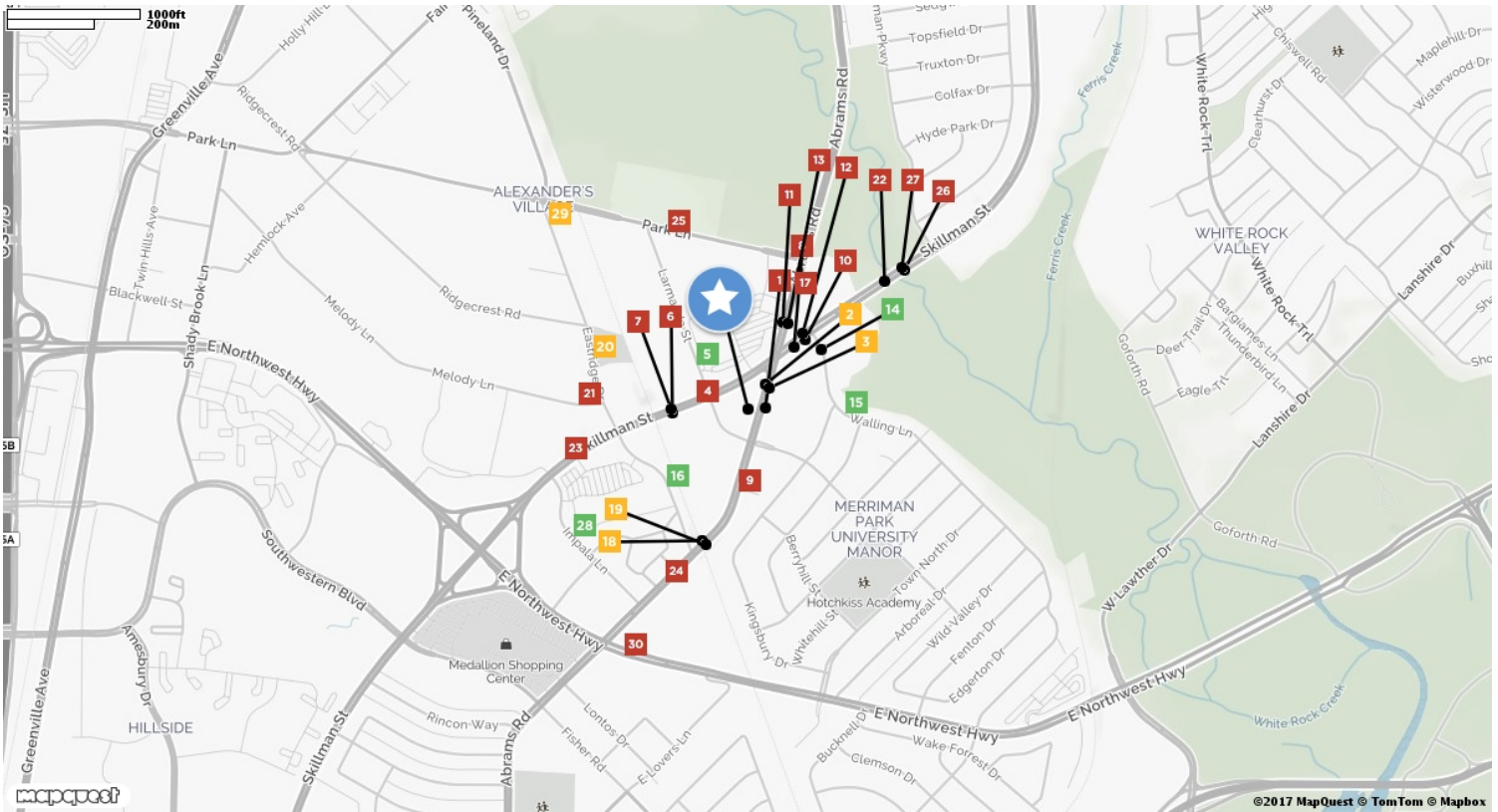


# Skillman Abrams Shopping Center

Republic Realty Advisors

6510 Abrams Rd Suite 125 Dallas, TX 75231 | 214-444-8781

## Traffic Counts



<b>Skillman St.</b> <b>1</b>	<b>EASTRIDGE DR</b> <b>2</b>	<b>EASTRIDGE DR</b> <b>3</b>	<b>Abrams Rd.</b> <b>4</b>	<b>5</b>
Larmanda	SKILLMAN ST	SKILLMAN ST	Eastridge Dr.	
Year: 2001 21,506	Year: 2009 8,174	Year: 2009 8,174	Year: 2001 25,929	Year: 2009 442
<b>EASTRIDGE DR</b> <b>6</b>	<b>EASTRIDGE DR</b> <b>7</b>	<b>Walling Ln.</b> <b>8</b>	<b>Larmanda</b> <b>9</b>	<b>Skillman St.</b> <b>10</b>
ABRAMS RD	ABRAMS RD	Abrams Rd.	Eastridge	Abrams Rd.
Year: 2009 12,611	Year: 2009 12,611	Year: 2001 30,374	Year: 2001 23,389	Year: 2012 11,795
<b>SKILLMAN ST</b> <b>11</b>	<b>Skillman St.</b> <b>12</b>	<b>SKILLMAN ST</b> <b>13</b>	<b>NW HWY LP12</b> <b>14</b>	<b>Nw Hwy Lp12</b> <b>15</b>
PARK LN	Abrams Rd.	PARK LN	SKILLMAN AVE	Skillman Ave
Year: 2010 11,539	Year: 2012 11,539	Year: 2010 11,809	Year: 2009 1,871	Year: 2009 1,065
<b>ABRAMS RD</b> <b>16</b>	<b>Park Ln.</b> <b>17</b>	<b>EASTRIDGE DR</b> <b>18</b>	<b>EASTRIDGE DR</b> <b>19</b>	<b>Skillman</b> <b>20</b>
SKILLMAN ST	Skillman St.	SKILLMAN ST	SKILLMAN ST	Park
Year: 2009 2,575	Year: 2001 26,755	Year: 2009 7,869	Year: 2009 7,869	Year: 2002 5,257
<b>EASTRIDGE DR</b> <b>21</b>	<b>Merriman Pkwy.</b> <b>22</b>	<b>NW HWY RAMP WB</b> <b>23</b>	<b>Eastridge</b> <b>24</b>	<b>Eastridge</b> <b>25</b>
SHADY BROOK LN	Walling Ln.	EASTRIDGE	N W HWY	Abrams Rd.
Year: 2004 13,103	Year: 2001 31,425	Year: 2009 24,685	Year: 2001 25,273	Year: 2001 15,513
<b>WALLING LN</b> <b>26</b>	<b>WALLING LN</b> <b>27</b>	<b>Skillman</b> <b>28</b>	<b>RIDGECREST RD</b> <b>29</b>	<b>ABRAMS</b> <b>30</b>
MERRIMAN PKWY	MERRIMAN PKWY	Ramsgate	PARK LN	
Year: 2004 16,369	Year: 2004 16,369	Year: 2009 850	Year: 2004 5,791	Year: 2009 46,492



**Bill Bell**  
bill@republicra.com  
214-444-8781



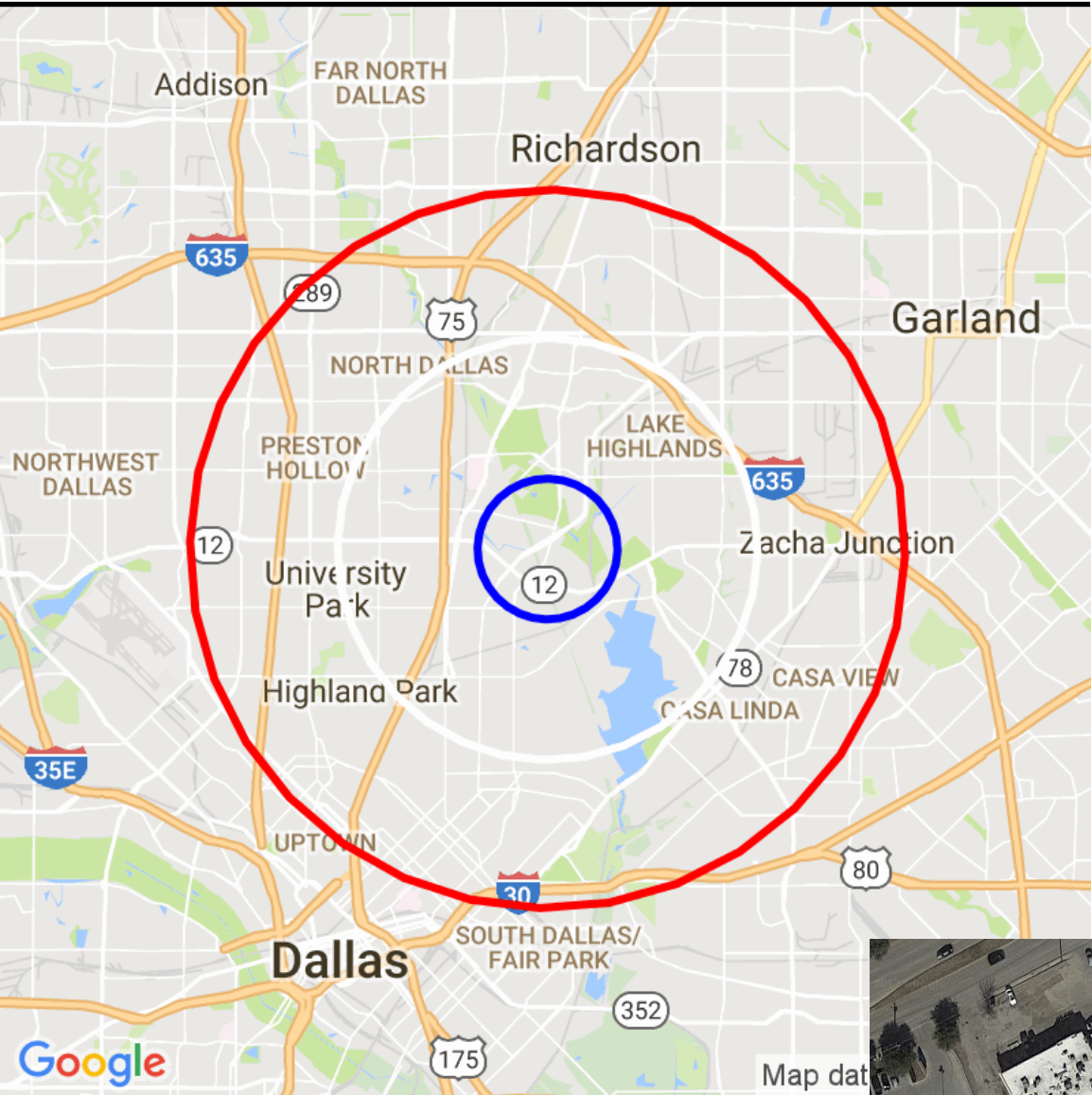
This information supplied herein is from sources we deem reliable. It is provided without any representation, warranty or guarantee, expressed or implied as to its accuracy. Prospective Buyer or Tenant should conduct an independent investigation and verification of all matters deemed to be material, including, but not limited to, statements of income and expenses. Consult your attorney, accountant, or other prof. advisor.

# Skillman Abrams Shopping Center

Republic Realty Advisors

6510 Abrams Rd Suite 125 Dallas, TX 75231 | 214-444-8781

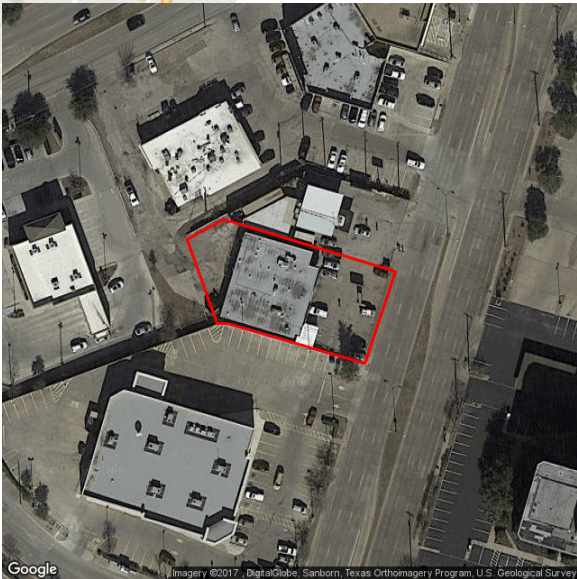
## Demographic Report



## Skillman Abrams Shopping Center

### Population

Distance	Male	Female	Total
1- Mile	9,837	8,408	18,245
3- Mile	53,748	52,107	105,856
5- Mile	138,696	143,588	282,284





**Bill Bell**  
bill@republicra.com  
214-444-8781



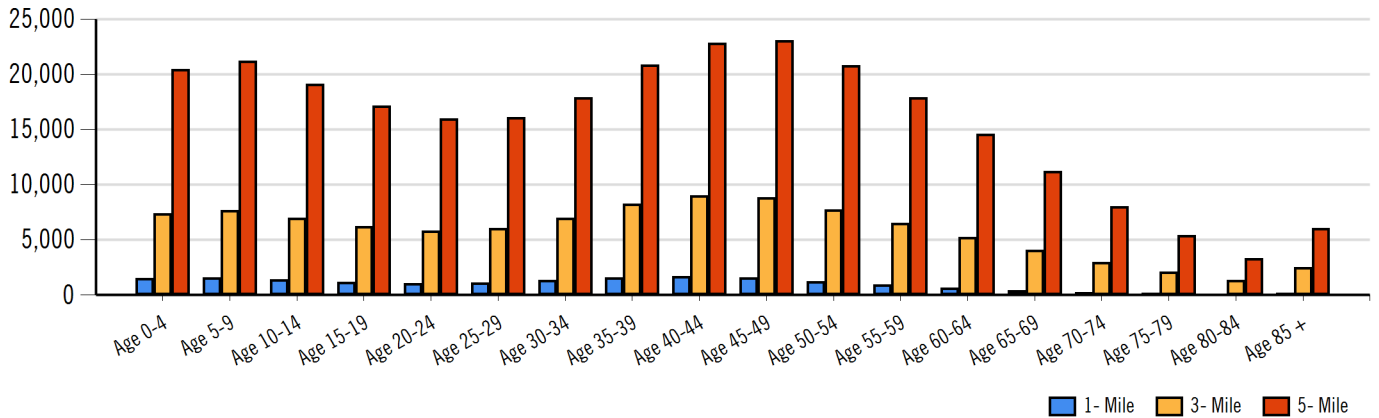
This information supplied herein is from sources we deem reliable. It is provided without any representation, warranty or guarantee, expressed or implied as to its accuracy. Prospective Buyer or Tenant should conduct an independent investigation and verification of all matters deemed to be material, including, but not limited to, statements of income and expenses. Consult your attorney, accountant, or other prof. advisor.

# Skillman Abrams Shopping Center

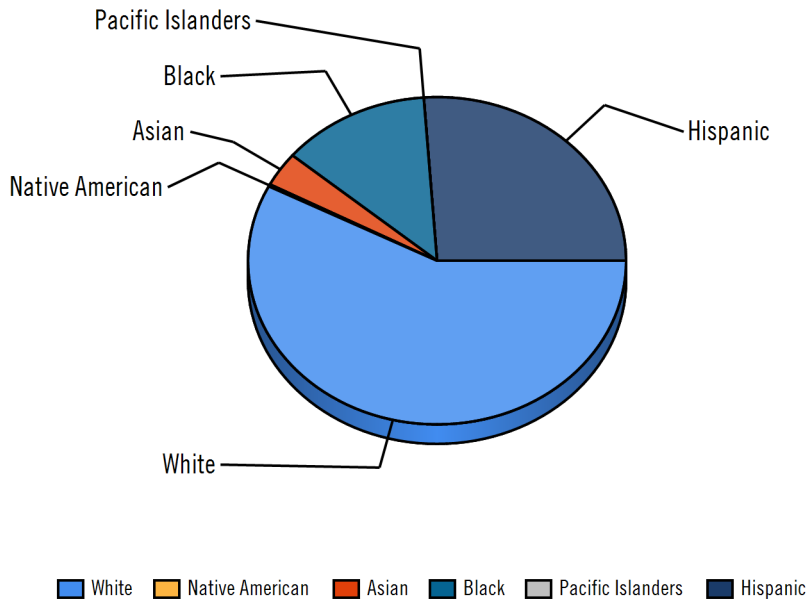
Republic Realty Advisors

6510 Abrams Rd Suite 125 Dallas, TX 75231 | 214-444-8781

## Population by Distance and Age (2015)



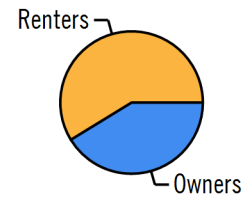
## Ethnicity within 5 miles



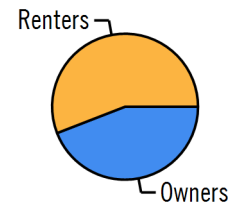
### Home Ownership 1 Mile



### Home Ownership 3 Mile



### Home Ownership 5 Mile



## Employment by Distance

Distance	Employed	Unemployed	Unemployment Rate
1-Mile	9,227	168	1.09 %
5-Mile	147,602	1,932	1.13 %
3-Mile	56,244	673	0.95 %



**Bill Bell**  
bill@republicra.com  
214-444-8781



# Skillman Abrams Shopping Center

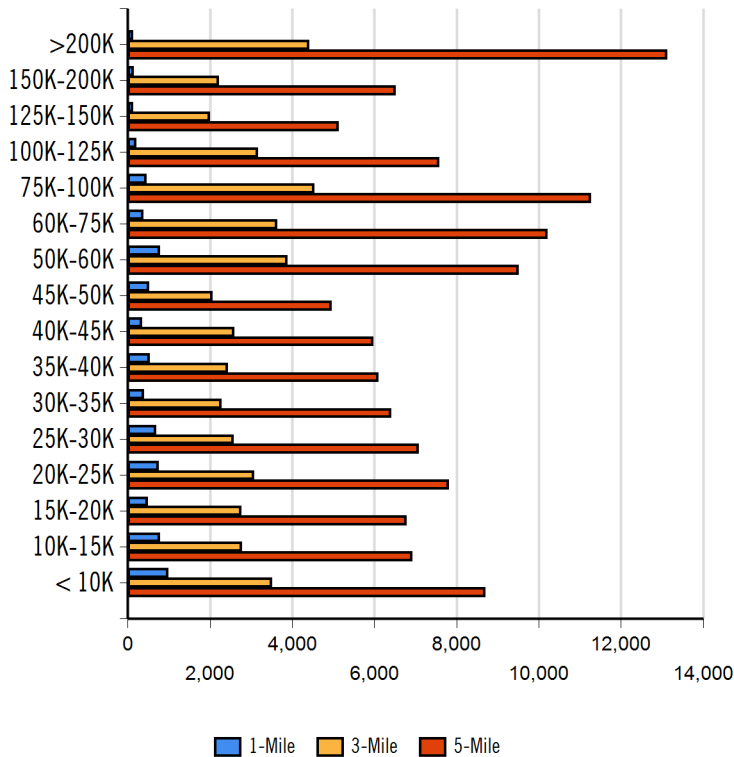
Republic Realty Advisors

6510 Abrams Rd Suite 125 Dallas, TX 75231 | 214-444-8781

## Labor & Income

	Agriculture	Mining	Construction	Manufacturing	Wholesale	Retail	Transportation	Information	Professional	Utility	Hospitality	Pub-Admin	Other
1-Mile	0	31	1,210	563	133	1,637	257	191	2,132	1,609	1,514	70	1,542
5-Mile	196	912	10,064	11,540	4,350	17,062	5,587	4,615	30,043	31,646	15,758	2,800	16,467
3-Mile	52	397	3,804	3,649	1,595	6,823	2,020	1,803	12,828	12,693	6,564	1,015	6,730

## Household Income



Radius	Median Household Income
1-Mile	\$46,398.89
3-Mile	\$75,522.96
5-Mile	\$78,955.21

Radius	Average Household Income
1-Mile	\$55,030.79
3-Mile	\$83,367.08
5-Mile	\$84,596.89

Radius	Aggregate Household Income
1-Mile	\$325,754,444.47
3-Mile	\$3,563,926,029.71
5-Mile	\$9,633,857,692.57

## Education

	1-Mile	3-mile	5-mile
Pop > 25	11,550	72,524	190,359
High School Grad	1,559	9,087	25,706
Some College	2,157	14,478	37,748
Associates	433	3,072	9,334
Bachelors	2,000	21,083	53,705
Masters	676	8,323	20,097
Prof. Degree	361	3,921	10,338
Doctorate	118	767	2,261

## Tapestry

	1-Mile	3-mile	5-mile
Vacant Ready For Rent	104 %	121 %	119 %
Teen's	64 %	71 %	82 %
Expensive Homes	11 %	64 %	121 %
Mobile Homes	1 %	2 %	2 %
New Homes	13 %	29 %	47 %
New Households	143 %	133 %	136 %
Military Households	0 %	0 %	2 %
Households with 4+ Cars	13 %	29 %	41 %
Public Transportation Users	149 %	94 %	81 %
Young Wealthy Households	4 %	218 %	236 %

This Tapestry information compares this selected market against the average. If a tapestry is over 100% it is above average for that statistic. If a tapestry is under 100% it is below average.



**Bill Bell**  
bill@republicra.com  
214-444-8781



# Skillman Abrams Shopping Center

Republic Realty Advisors

6510 Abrams Rd Suite 125 Dallas, TX 75231 | 214-444-8781

## Expenditures

	1-Mile	%	3-Mile	%	5-Mile	%
<b>Total Expenditures</b>	280,508,026		2,283,260,559		6,057,019,181	
<b>Average annual household</b>	65,105		62,429		56,832	
<b>Food</b>	8,786	13.50 %	8,246	13.21 %	7,473	13.15 %
Food at home	5,722		5,134		4,626	
Cereals and bakery products	804		719		648	
Cereals and cereal products	283		251		226	
Bakery products	521		468		421	
Meats poultry fish and eggs	1,199		1,069		964	
Beef	292		263		238	
Pork	222		191		172	
Poultry	227		203		182	
Fish and seafood	188		175		158	
Eggs	89		77		69	
Dairy products	582		533		480	
Fruits and vegetables	1,108		1,001		903	
Fresh fruits	170		153		138	
Processed vegetables	211		184		165	
Sugar and other sweets	209		186		168	
Fats and oils	175		155		140	
Miscellaneous foods	1,072		961		864	
Nonalcoholic beverages	508		443		398	
Food away from home	3,064		3,111		2,847	
Alcoholic beverages	471		491		450	
<b>Housing</b>	24,228	37.21 %	22,346	35.79 %	20,247	35.63 %
Shelter	14,633		13,665		12,396	
Owned dwellings	8,294		8,287		7,604	
Mortgage interest and charges	4,189		4,291		3,946	
Property taxes	2,626		2,638		2,421	
Maintenance repairs	1,479		1,357		1,236	
Rented dwellings	5,345		4,196		3,703	
Other lodging	993		1,182		1,089	
Utilities fuels	5,794		4,985		4,497	
Natural gas	585		525		477	
Electricity	2,339		1,971		1,770	
Fuel oil	223		200		180	
Telephone services	1,800		1,544		1,395	
Water and other public services	845		744		673	
<b>Household operations</b>	1,521	2.34 %	1,530	2.45 %	1,394	2.45 %
Personal services	446		483		441	
Other household expenses	1,064		1,039		947	
Housekeeping supplies	851		809		732	
Laundry and cleaning supplies	228		204		182	
Other household products	471		458		417	
Postage and stationery	151		147		132	
Household furnishings	1,427		1,355		1,227	
Household textiles	89		104		93	
Furniture	256		216		194	
Floor coverings	5		0		0	
Major appliances	219		174		159	
Small appliances	131		130		119	
Miscellaneous	726		730		660	
<b>Apparel and services</b>	1,950	3.00 %	1,890	3.03 %	1,706	3.00 %
Men and boys	394		412		372	
Men 16 and over	316		334		301	
Boys 2 to 15	77		78		70	
Women and girls	763		744		674	



**Bill Bell**  
bill@republicra.com  
214-444-8781



This information supplied herein is from sources we deem reliable. It is provided without any representation, warranty or guarantee, expressed or implied as to its accuracy. Prospective Buyer or Tenant should conduct an independent investigation and verification of all matters deemed to be material, including, but not limited to, statements of income and expenses. Consult your attorney, accountant, or other prof. advisor.



# Skillman Abrams Shopping Center

Republic Realty Advisors

6510 Abrams Rd Suite 125 Dallas, TX 75231 | 214-444-8781

Women 16 and over	635	637	578
Girls 2 to 15	128	106	95
Children under 2	137	122	109

## Expenditures (Continued)

	1-Mile	%	3-Mile	%	5-Mile	%
<b>Total Expenditures</b>	280,508,026		2,283,260,559		6,057,019,181	
<b>Average annual household</b>	65,105		62,429		56,832	
<b>Transportation</b>	8,605	13.22 %	7,911	12.67 %	7,211	12.69 %
Vehicle purchases	1,444		1,364		1,256	
Cars and trucks new	175		181		189	
Cars and trucks used	1,191		1,125		1,017	
Gasoline and motor oil	3,058		2,661		2,414	
Other vehicle expenses	3,494		3,183		2,895	
Vehicle finance charges	271		245		226	
Maintenance and repairs	1,146		1,080		984	
Vehicle insurance	1,506		1,307		1,199	
Vehicle rental leases	459		474		433	
Public transportation	608		703		644	
<b>Health care</b>	5,268	8.09 %	4,695	7.52 %	4,256	7.49 %
Health insurance	3,163		2,769		2,510	
Medical services	1,007		938		854	
Drugs	565		504		459	
Medical supplies	166		156		142	
<b>Entertainment</b>	3,684	5.66 %	3,543	5.68 %	3,226	5.68 %
Fees and admissions	681		801		741	
Television radios	1,452		1,254		1,133	
Pets toys	1,217		1,170		1,065	
Personal care products	835		812		737	
Reading	96		96		87	
Education	1,555		1,901		1,733	
Tobacco products	609		476		423	
<b>Miscellaneous</b>	1,092	1.68 %	1,065	1.71 %	984	1.73 %
<b>Cash contributions</b>	1,957		1,841		1,693	
<b>Personal insurance</b>	6,330		7,436		6,890	
Life and other personal insurance	263		273		252	
Pensions and Social Security	6,067		7,162		6,637	

Estimated Households					Housing Occupied By		Housing Occupancy		
Distance	Year	Projection	2000	Change	1 Person	Family	Owner	Renter	Vacant
1-Mile	2015	560	546	0.33 %	217	286	153	407	152
3-Mile	2015	508	507	-2.98 %	204	256	225	283	115
5-Mile	2015	517	511	-0.96 %	197	274	231	286	111
1-Mile	2020	591	546	6.97 %	228	303	154	437	193
3-Mile	2020	512	507	-1.54 %	206	258	222	290	174
5-Mile	2020	526	511	0.86 %	200	279	229	297	165



**Bill Bell**  
bill@republicra.com  
214-444-8781



This information supplied herein is from sources we deem reliable. It is provided without any representation, warranty or guarantee, expressed or implied as to its accuracy. Prospective Buyer or Tenant should conduct an independent investigation and verification of all matters deemed to be material, including, but not limited to, statements of income and expenses. Consult your attorney, accountant, or other prof. advisor.