

**FOR LEASE**

**33,927 SF / 2 DOCKS / 7 GRADE DOORS**



**42398 REMINGTON AVENUE  
TEMECULA, CA 92590**

***PLEASE CONTACT FOR PRICING***

No warranty or representation has been made to the accuracy of the foregoing information. Terms of sale or lease and availability are subject to change or withdrawal without notice. Lee & Associates Commercial Real Estate Services, Inc. - Riverside. 25240 Hancock Avenue, Suite 100 - Murrieta, CA 92562 | Corporate ID# 01048055

**SCOTT STEWART**

951.445.4514  
sstewart@leetemecula.com  
DRE #01342575

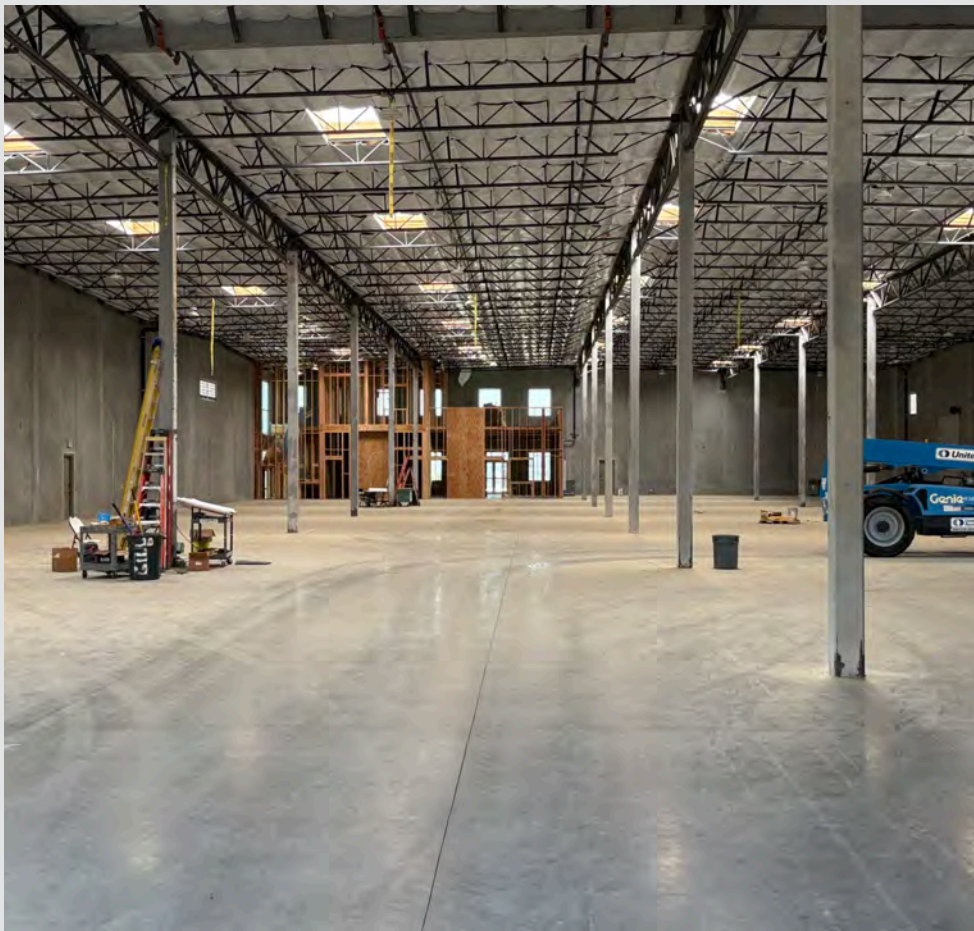


**MAHLON TOBIAS**

909.645.2427  
mahlon@tobiascommercial.com  
DRE #01398009







## PROPERTY FEATURES

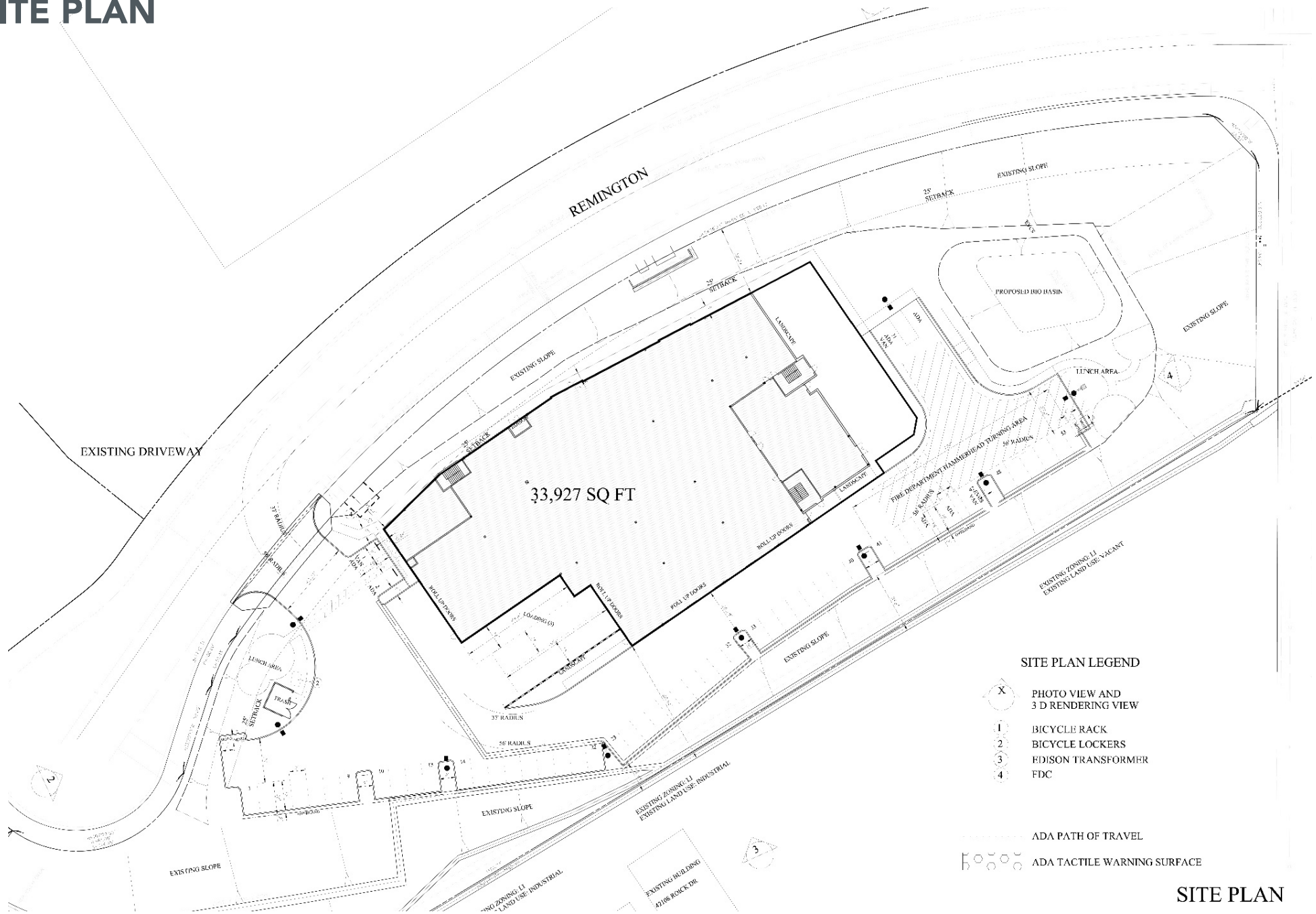
- ±33,927 SF Industrial Building with ±10% Office Buildout on ±2.2 Acres
- Ample Power
- 2.3/1,000 Parking
- 2 Docks, 7 Grade Doors
- Clear Height: 24 FT
- ESFR Ready Fire Sprinklers

## AREA FEATURES

- Located in the Westside Business Center, the premier Business Park in SW Riverside County
- Direct access to Interstate 15 from Winchester Road
- Close to numerous restaurants and retail services
- High image corporate neighbors include Medline (PHS), Abbott Labs & Scott's Turf

No warranty or representation has been made to the accuracy of the foregoing information. Terms of sale or lease and availability are subject to change or withdrawal without notice. Lee & Associates Commercial Real Estate Services, Inc. - Riverside. 25240 Hancock Avenue, Suite 100 - Murrieta, CA 92562 | Corporate ID# 01048055

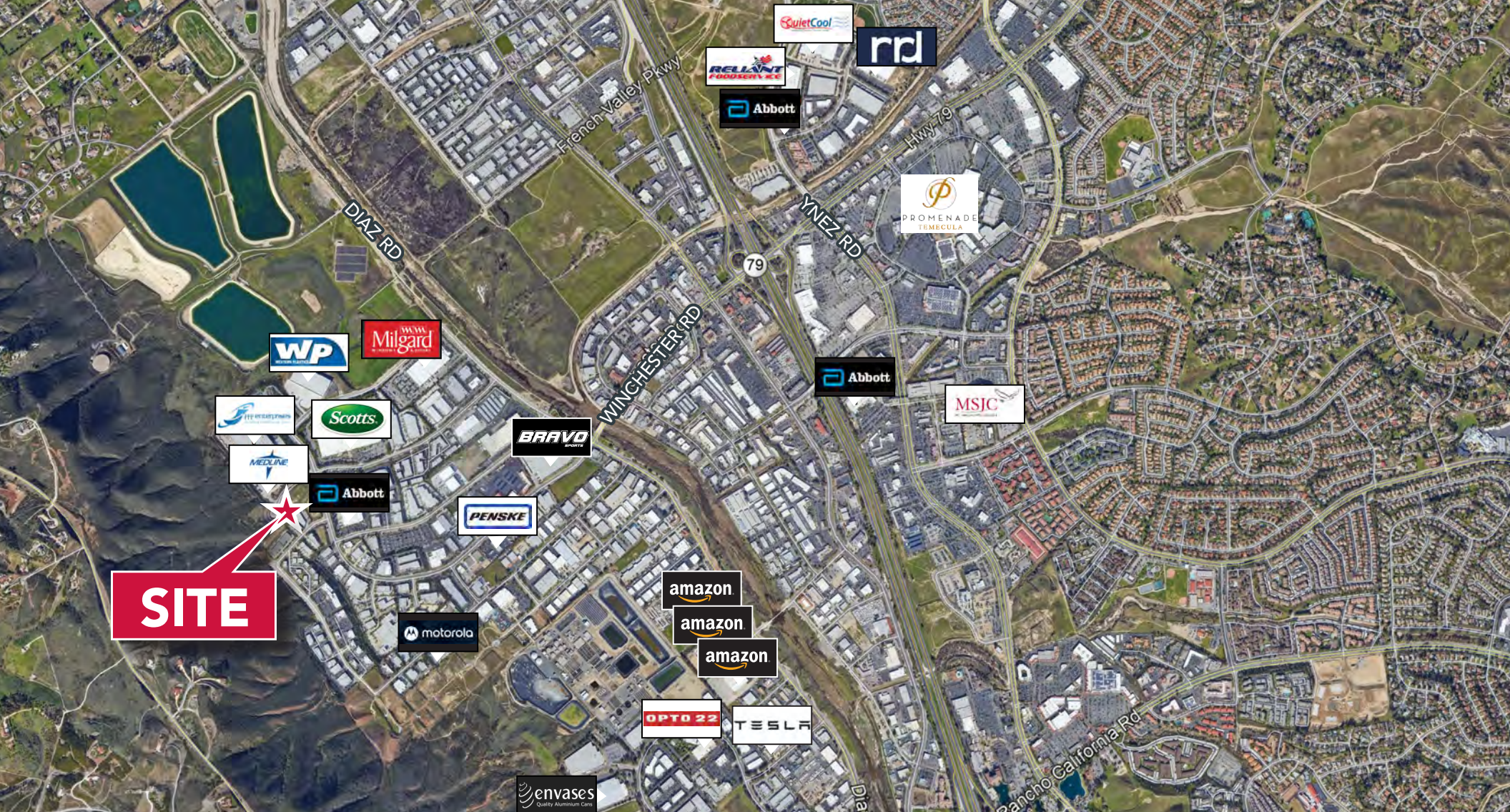
## SITE PLAN



## SITE PLAN

No warranty or representation has been made to the accuracy of the foregoing information. Terms of sale or lease and availability are subject to change or withdrawal without notice. Lee & Associates Commercial Real Estate Services, Inc. - Riverside. 25240 Hancock Avenue, Suite 100 - Murrieta, CA 92562 | Corporate ID# 01048055





## CONTACT US:

### SCOTT STEWART

951.445.4514

sstewart@leetemecula.com

DRE #01342575



### MAHLON TOBIAS

909.645.2427

mahlon@tobiascommercial.com

DRE #01398009



No warranty or representation has been made to the accuracy of the foregoing information. Terms of sale or lease and availability are subject to change or withdrawal without notice. Lee & Associates Commercial Real Estate Services, Inc. - Riverside. 25240 Hancock Avenue, Suite 100 - Murrieta, CA 92562 | Corporate ID# 01048055