



FOR SALE OR LEASE

Equitable Building, Suite 240
730 17th Street, Denver, CO 80202

Historic Landmark Building with Modern Amenities

ABOUT THE PROPERTY

UNIT SIZE	1,928 USF / 2,236 RSF
BUILDING SIZE	222,630 GSF
YEAR BUILT	1890
ASSOCIATION DUES	\$1,510.44/mo

The Equitable Building was the showpiece of Denver's thriving financial district when it opened in 1892. It remains the gem of the city. Modern amenities and an impeccable unit buildout make this a one of a kind opportunity for a prestigious, professional suite in one of Denver's most coveted office buildings.

FOR MORE INFORMATION:

DAVID LEUTHOLD

C: 303.520.7729

dleuthold@stcharlestown.com

stcharlestown.com

SUITE 240 - 2,236 RSF

- Historic Landmark Building with modern amenities
- Numerous parking garages adjacent to building
- Across the street from RTD Lightrail station and the 16th Street Mall
- On site property management, workout facilities, and conference room

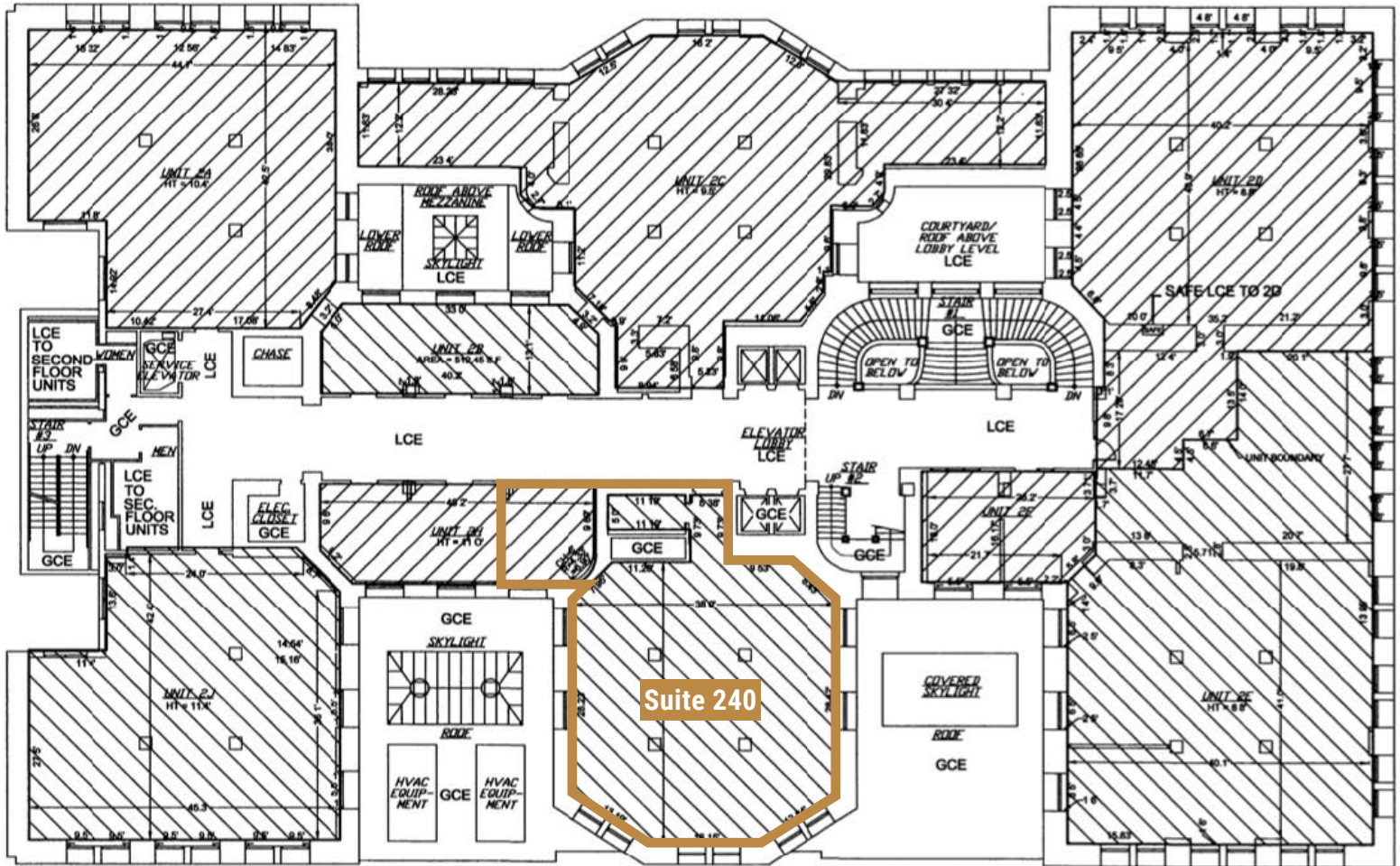
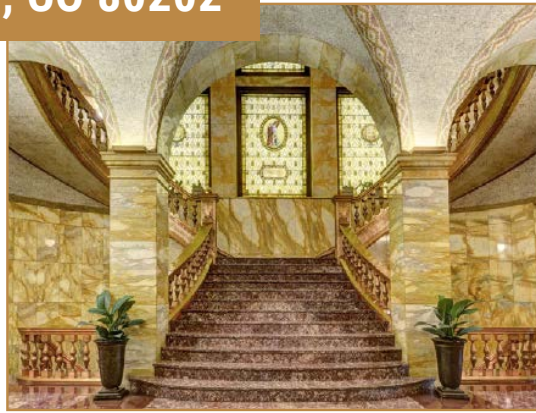
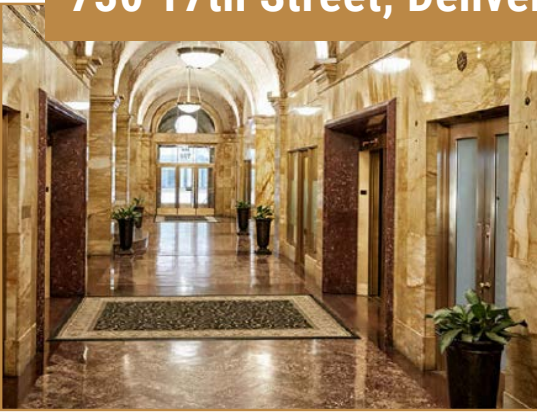
SALE PRICE: \$575,000

LEASE RATE: \$16.00/SF NNN

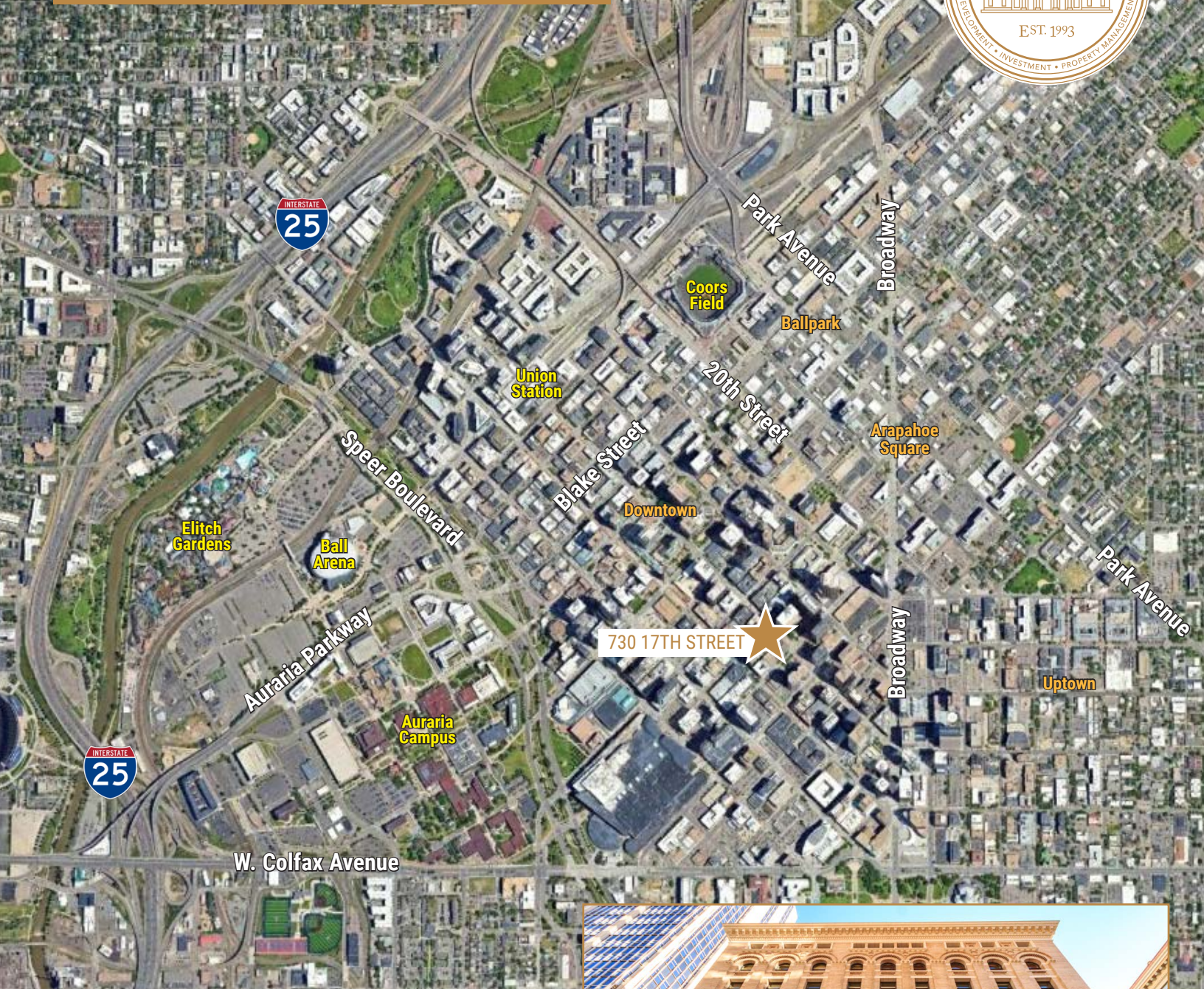
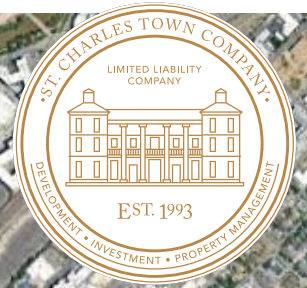
Estimated Expenses \$16.00/SF

Equitable Building, Suite 240

730 17th Street, Denver, CO 80202



730 17TH STREET, SUITE 240
DENVER, CO 80202



FOR MORE INFORMATION:
DAVID LEUTHOLD
C: 303.520.7729
dleuthold@stcharlestown.com
stcharlestown.com

NO WARRANTY OR REPRESENTATION, EXPRESS OR IMPLIED, IS MADE AS TO THE ACCURACY OF THE INFORMATION CONTAINED HEREIN, AND THE SAME IS SUBMITTED SUBJECT TO ERRORS, OMISSIONS, CHANGE OF PRICE, RENTAL OR OTHER CONDITIONS, PRIOR SALE, LEASE OR FINANCING, OR WITHDRAWAL WITHOUT NOTICE, AND OF ANY SPECIAL LISTING CONDITIONS IMPOSED BY OUR PRINCIPALS NO WARRANTIES OR REPRESENTATIONS ARE MADE AS TO THE CONDITION OF THE PROPERTY OR ANY HAZARDS CONTAINED THEREIN ARE ANY TO BE IMPLIED.

