

# 1390 WALLACE AVENUE

FOR LEASE | BAYVIEW WAREHOUSE SPACE

**TCP**  
**TOUCHSTONE**  
COMMERCIAL PARTNERS



[WWW.TCPRE.COM](http://WWW.TCPRE.COM)

**ZACH HAUPERT** [zhaupert@tcpre.com](mailto:zhaupert@tcpre.com)  
D 415.539.1121 | C 415.812.1219

**MICHAEL SANBERG** [msanberg@tcpre.com](mailto:msanberg@tcpre.com)  
D 415.539.1103 | C 415.697.6088

**TREVOR GUDIM** [trevor@tcpre.com](mailto:trevor@tcpre.com)  
D 415.539.1122 | C 858.922.2632

# 1390 WALLACE AVENUE

## PROPERTY SUMMARY

### ADDRESS

1390 Wallace Avenue, San Francisco, CA 94124

### AVAILABLE SPACE

+/- 5,000 Square Feet + Parking

### RENTAL RATE

\$1.65 / Square Foot / Year, Industrial Gross

### ZONING

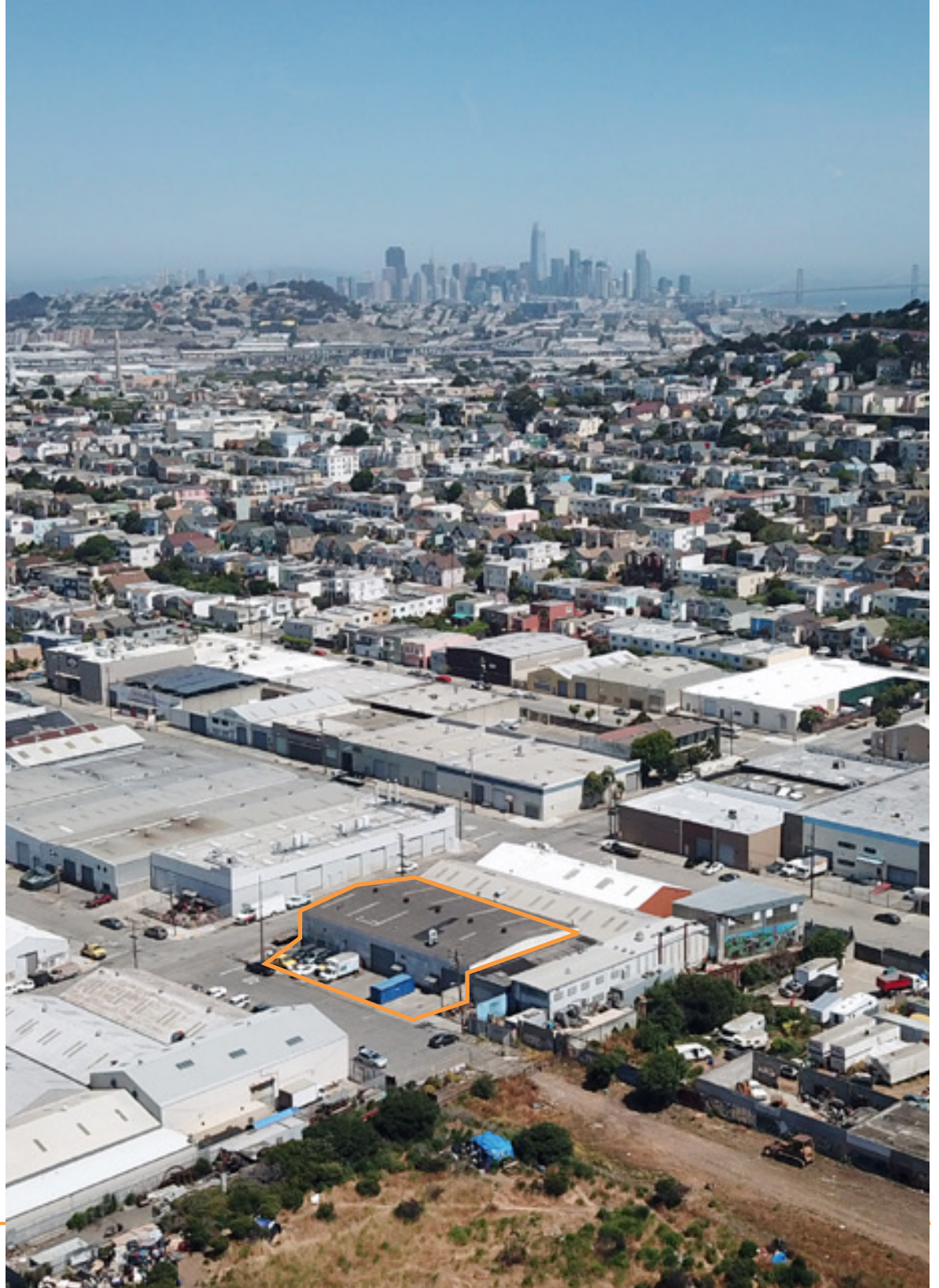
PDR-2 (Production, Distribution, and Repair)

### AVAILABLE

Immediately

## BUILDING ATTRIBUTES

- + One (1) 14' x 12' Drive-In Roll-Up Door on Ingalls Street
- + Three (3) Dedicated Parking Spaces
- + One (1) Restroom
- + Walkable To Public Transportation & Other Bayview Amenities



# 1390 WALLACE AVENUE

## LOCATION OVERVIEW

Desirable Bayview location, walkable to nearby amenities, public transportation and to surrounding neighborhoods.



**04 MIN** to MUNI 3rd & William  
**06 MIN** to MUNI 3rd & Carroll  
**10 MIN** to Market St



**06 MIN** to India Basin  
**09 MIN** to Bernal Heights  
**10 MIN** to Potrero Hill



**06 MIN** to 101 On-Ramp  
**07 MIN** to 280 On-Ramp

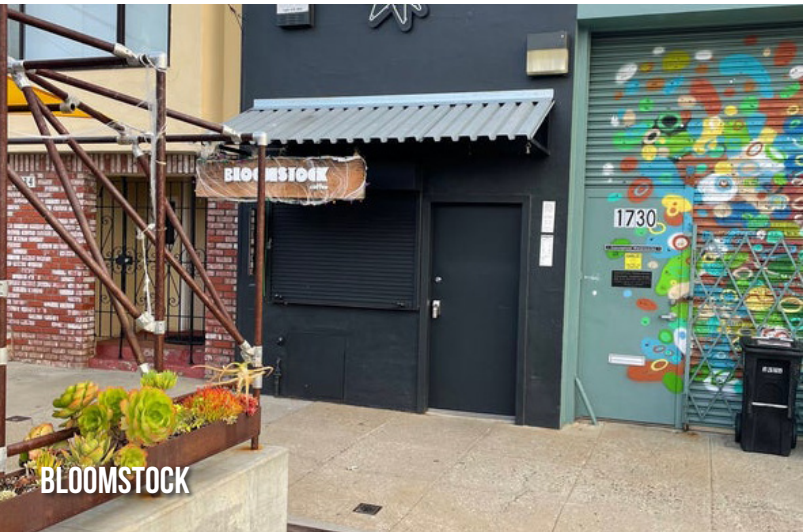




LAUGHING MONK



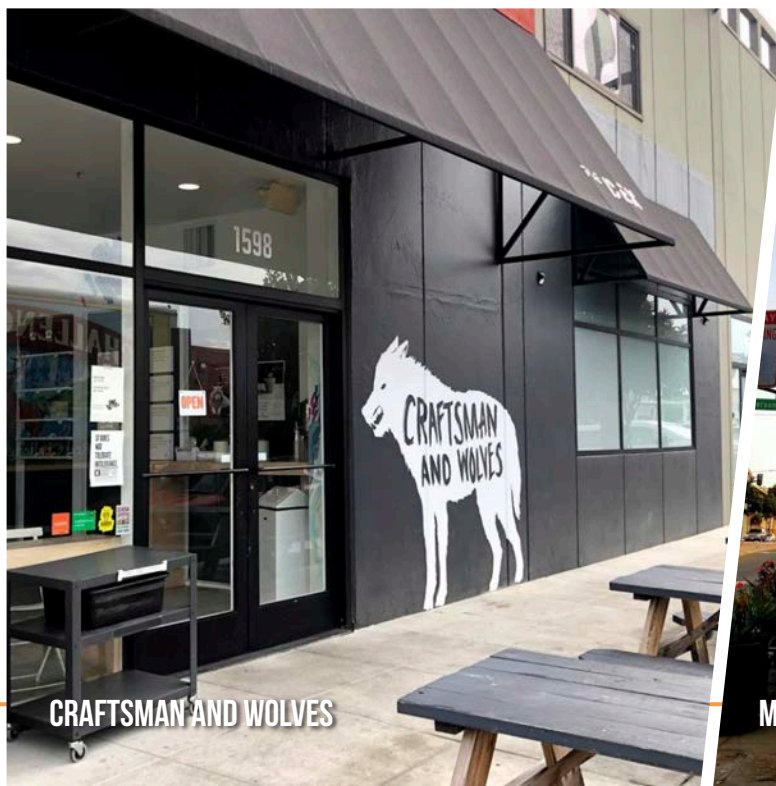
FOX & LION BREAD CO.



BLOOMSTOCK



CAFE ENVY



CRAFTSMAN AND WOLVES



MONTECRISTO

# 1390 WALLACE AVENUE



Corp. Lic. 01112906  
www.tcpre.com

## ZACH HAUPERT

D 415.539.1121 C 415.812.1219  
zhaupert@tcpre.com DRE # 01822907

## MICHAEL SANBERG

D 415.539.1103 C 415.697.6088  
msanberg@tcpre.com DRE # 01930041

## TREVOR GUDIM

D 415.539.1122 C 858.922.2632  
trevor@tcpre.com DRE # 01979980

This document has been prepared by Touchstone Commercial Partners for advertising and general information only. Touchstone Commercial Partners makes no guarantees, representations or warranties of any kind, expressed or implied, regarding the information including, but not limited to, warranties of content, accuracy and reliability. Any interested party should undertake their own inquiries as to the accuracy of the information. Touchstone Commercial Partners excludes unequivocally all inferred or implied terms, conditions and warranties arising out of this document and excludes all liability for loss and damages arising there from. This publication is the copyrighted property of Touchstone Commercial Partners and/or its licensor(s). ©2023. All rights reserved.