



AVAILABLE FOR LEASE

262±SF TO 478±SF OFFICE SPACES

379 S. LIVERMORE AVENUE, LIVERMORE, CA 94550

LOCAL EXPERTISE. INTERNATIONAL REACH. WORLD CLASS.

Mark Rinkle

Principal  
mrinkle@lee-associates.com  
925-737-4145  
LIC NO 01512632

Kirsten Johnsen

Principal  
kjohnsen@lee-associates.com  
925-519-7818  
LIC NO 02133540



# PROPERTY HIGHLIGHTS



BUILDING/Common AREAS VIRTUAL TOUR



262±SF to 478±SF Office Spaces



Suite C2: ±262 SF

Suite C6: ±262 SF

Suite C7: ±350 SF

Suite C8: ±478 SF



Common Area Kitchen and Restroom



Parking available



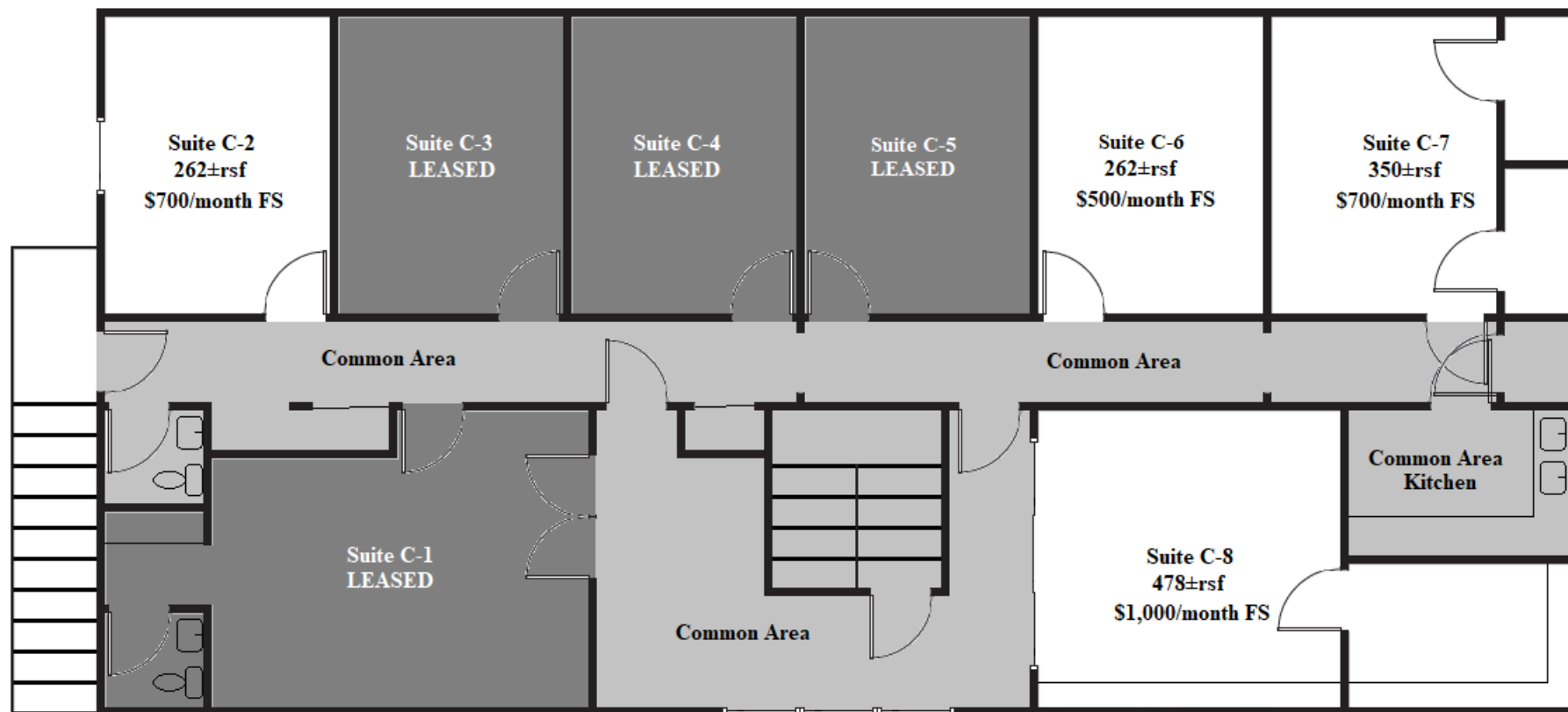
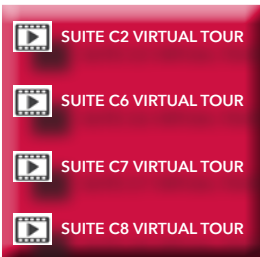
Ideally located within walking distance to Downtown Livermore



Lease rate: Please refer to floorplan for pricing

**379**  
**S. LIVERMORE AVE.**

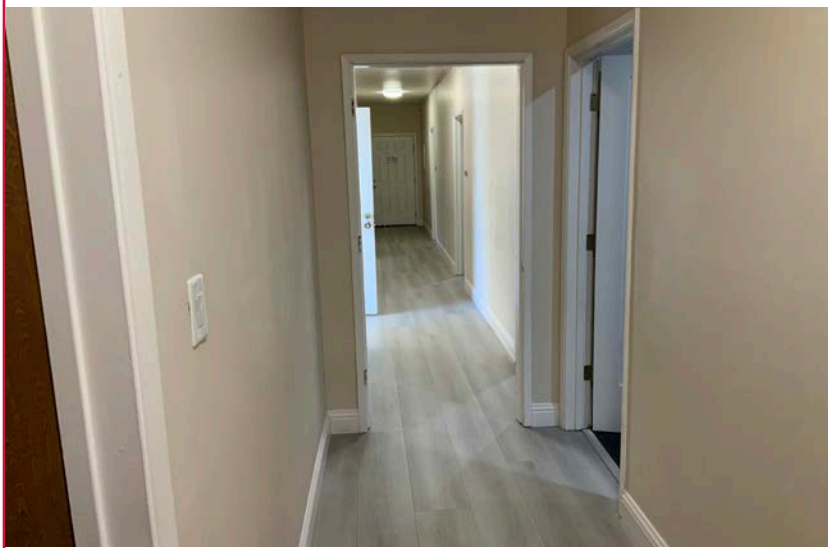
# FLOOR PLAN - SECOND FLOOR



379  
S. LIVERMORE AVE.



PHOTO GALLERY





# FOR LEASE

262±SF TO 478±SF OFFICE SPACES AVAILABLE

379 S. LIVERMORE AVENUE | LIVERMORE, CA 94550



Mark Rinkle

Principal

mrinkle@lee-associates.com  
925-737-4145  
LIC NO 01512632



Kirsten Johnsen

Principal

kjohnsen@lee-associates.com  
925-519-7818  
LIC NO 02133540

All information furnished regarding property for sale, rental or financing is from sources deemed reliable, but no warranty or representation is made to the accuracy thereof and same is submitted to errors, omissions, change of price, rental or other conditions prior to sale, lease or financing or withdrawal without notice. No liability of any kind is to be imposed on the broker herein.

Lee & Associates® East Bay, Inc. Corp. ID 01194869 5000 Pleasanton Ave, Suite 220, Pleasanton, CA 94566

LEE-ASSOCIATES.COM

379  
S. LIVERMORE AVE.