

OFFICE OR MEDICAL SPACE FOR LEASE

WATERFORD PROFESSIONAL SUITES

Perfect for Medical or Office Use

11317 Lake Underhill Rd, Orlando, FL 32825

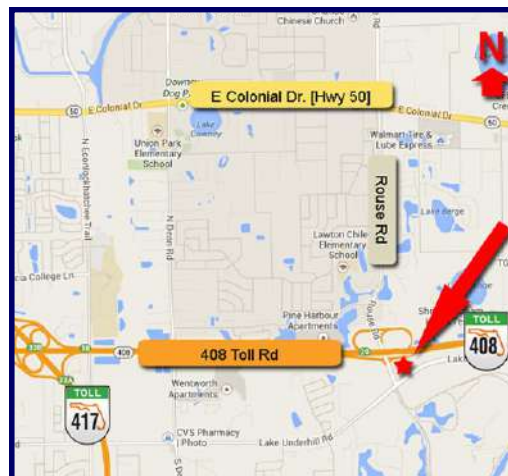
**1,800 SF
2nd Generation
Office**

&

**2,100 SF
Build-to Suit Shell**



- Rent Rate: \$18—\$20, depending on suite, lease terms and tenant's financials
- Monument & building signage opportunities
- Ample parking for clients or patients
- Population more than 98,000 within 3 miles
- Convenient to everywhere, with easy access to Lake Underhill, SR 408 and Alafaya Trail



**For more information, contact:
Benjamin LaFreniere, CCIM
(407) 476-4555
Ben@QuestCompany.com**

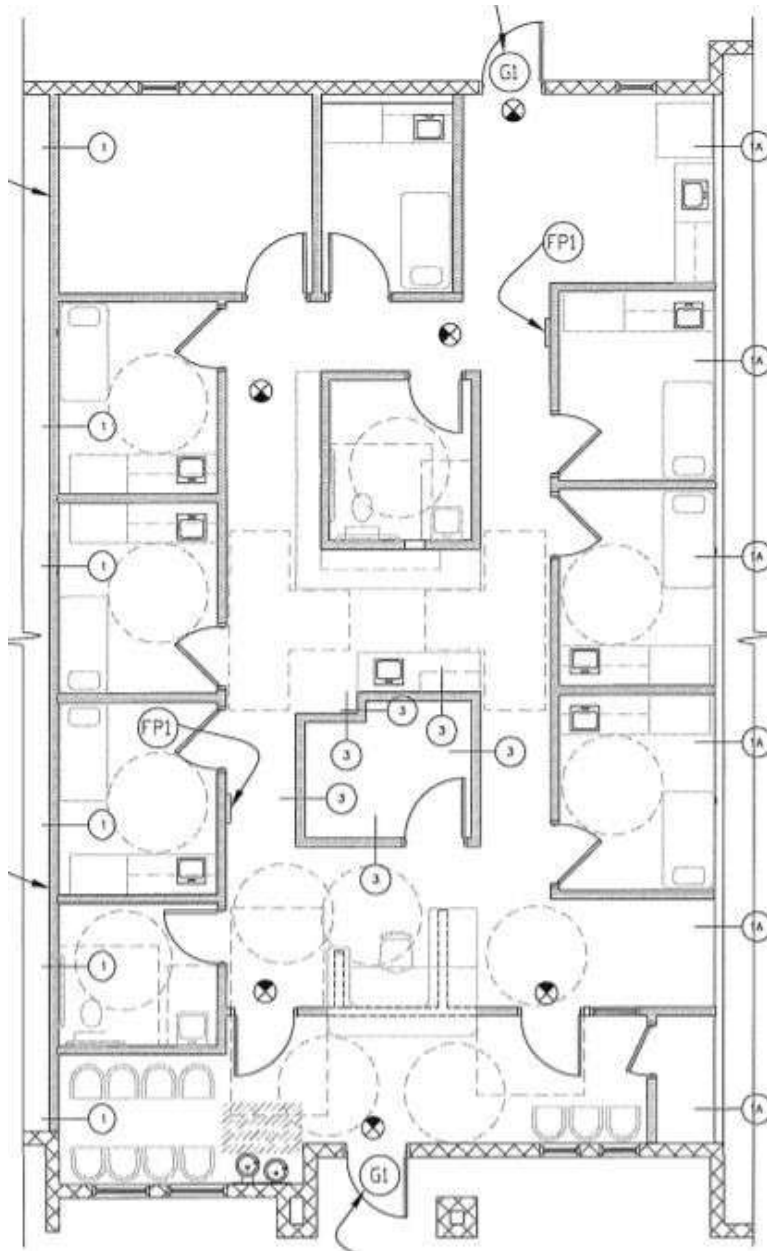


Quest Company
1180 Spring Centre S. Blvd, Suite 102
Altamonte Springs, FL 32714
(407) 786-4001
www.QuestCompany.com

No warranty or representation, express or implied, is made as to the accuracy of the information contained herein, and same is submitted subject to errors, omissions, change or price, or other conditions, withdrawal without notice, and to any special listing condition, imposed by our principals.

WATERFORD PROFESSIONAL SUITES

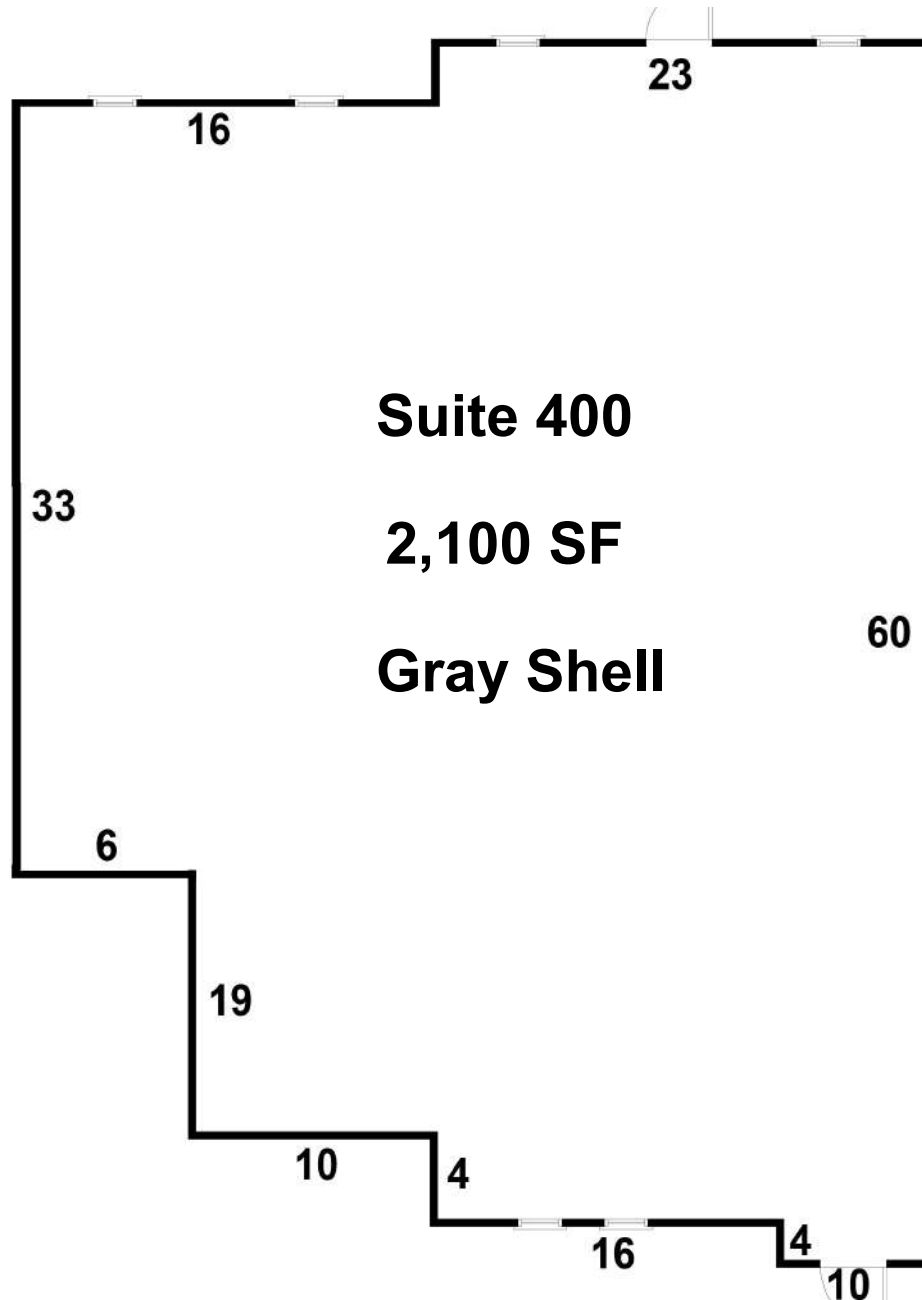
Suite 200 - 1,800 SF



*Changes to interior layout may have been made since the floor plan was produced.
Measurements are believed accurate, but no guarantees are made as to accuracy.
Parties are encouraged to conduct their own due diligence.*

WATERFORD PROFESSIONAL SUITES

Suite 400 - 2,100 SF



*Changes to interior layout may have been made since the floor plan was produced.
Measurements are believed accurate, but no guarantees are made as to accuracy.
Parties are encouraged to conduct their own due diligence.*