

690 ENTERPRISE DRIVE

AUBURN, GA
30011

Industrial Property For Sale
12,500+/- SF Warehouse Building

GUY WATKINS

Vice President

770.712.9100

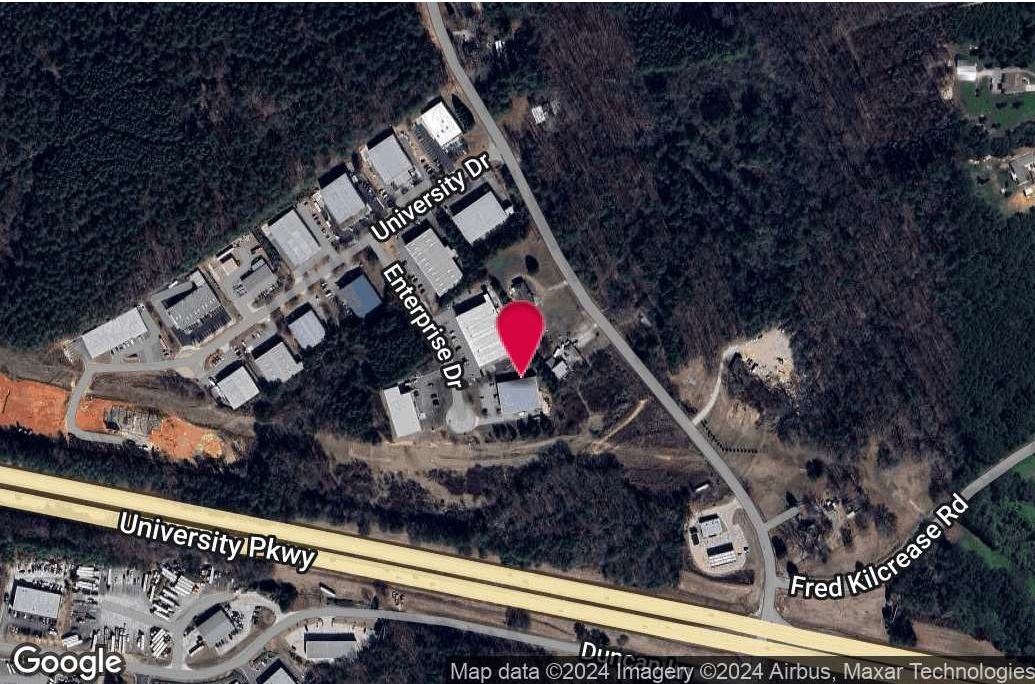
gwatkins@kingindustrial.com

King *Industrial
Realty, Inc.*

Industrial • Commercial • Investment

404.942.2000 | kingindustrial.com

FOR SALE
12,500+/- SF
WAREHOUSE



PROPERTY HIGHLIGHTS

- 1,742+/- SF Office Space
- 2 Drive-In Doors & 2 Dock Doors
- Ceiling Height 17' to 24'
- 480 Amps / 400 Volts/ 3 Phase Power
- Building Expansion Pad
- Zoned Light Industrial (Barrow County)

OFFERING SUMMARY

Lot Size:	2.06 Acres
Building Size:	12,500 SF
Zoning:	M-2 but limited to M-1 uses

GUY WATKINS

Vice President

770.712.9100

gwatkins@kingindustrial.com

Every effort has been made to provide accurate information, but no liability is assumed for errors or omissions.



Industrial • Commercial • Investment
404.942.2000 | kingindustrial.com

ADDITIONAL PHOTOS



GUY WATKINS

Vice President

770.712.9100

gwatkins@kingindustrial.com

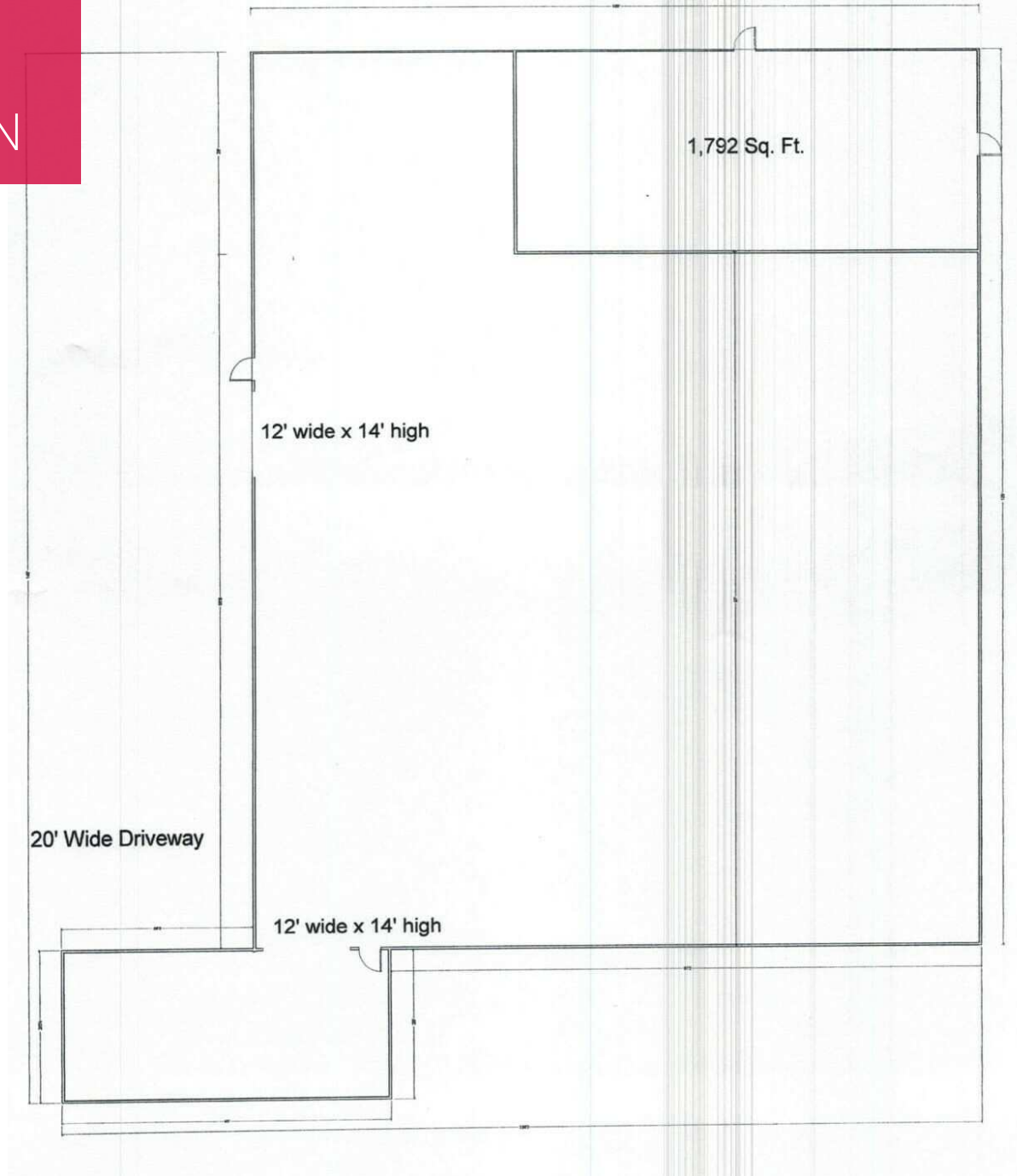
Every effort has been made to provide accurate information, but no liability is assumed for errors or omissions.

King Industrial
Realty, Inc.

CORFAC
INTERNATIONAL

Industrial • Commercial • Investment
404.942.2000 | kingindustrial.com

BUILDING FLOOR PLAN



GUY WATKINS

Vice President

770.712.9100

gwatkins@kingindustrial.com

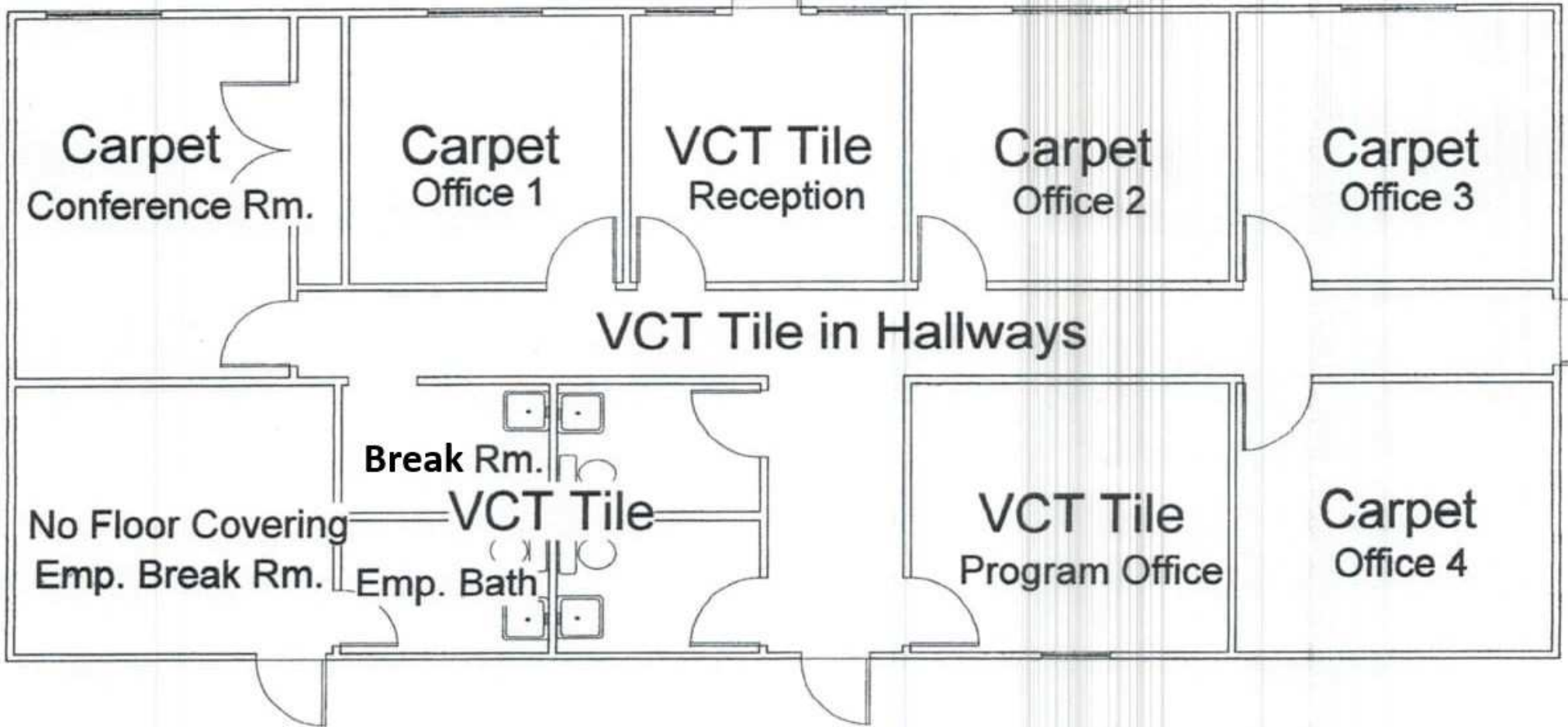
Every effort has been made to provide accurate information, but no liability is assumed for errors or omissions.

King Industrial
Realty, Inc.

CORFAC
INTERNATIONAL

Industrial • Commercial • Investment
404.942.2000 | kingindustrial.com

OFFICE FLOOR PLAN



GUY WATKINS

Vice President

770.712.9100

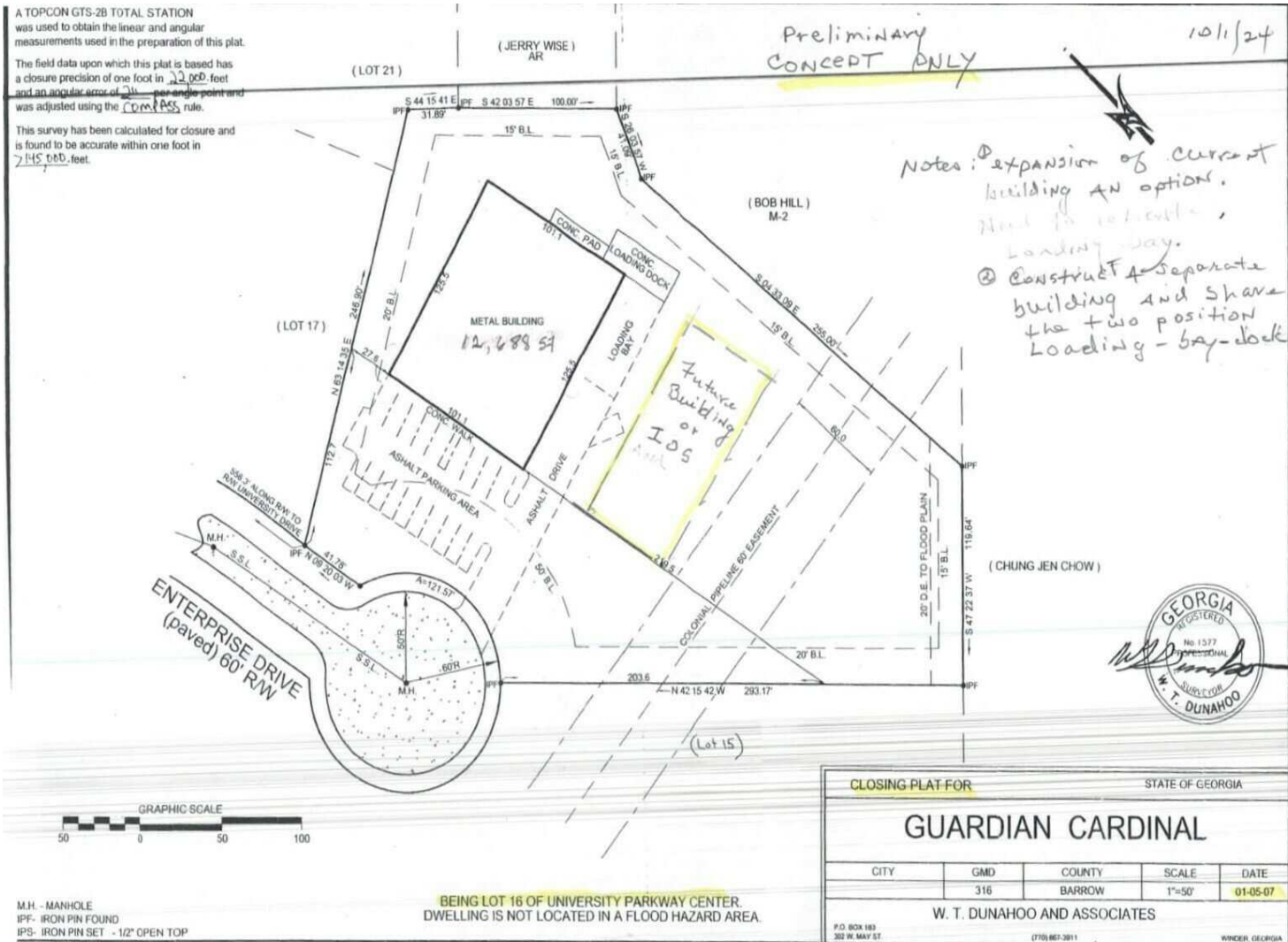
gwatkins@kingindustrial.com

Every effort has been made to provide accurate information, but no liability is assumed for errors or omissions.



Industrial • Commercial • Investment
404.942.2000 | kingindustrial.com

SURVEY



GUY WATKINS

Vice President

770.712.9100

gwatkins@kingindustrial.com

Every effort has been made to provide accurate information, but no liability is assumed for errors or omissions.

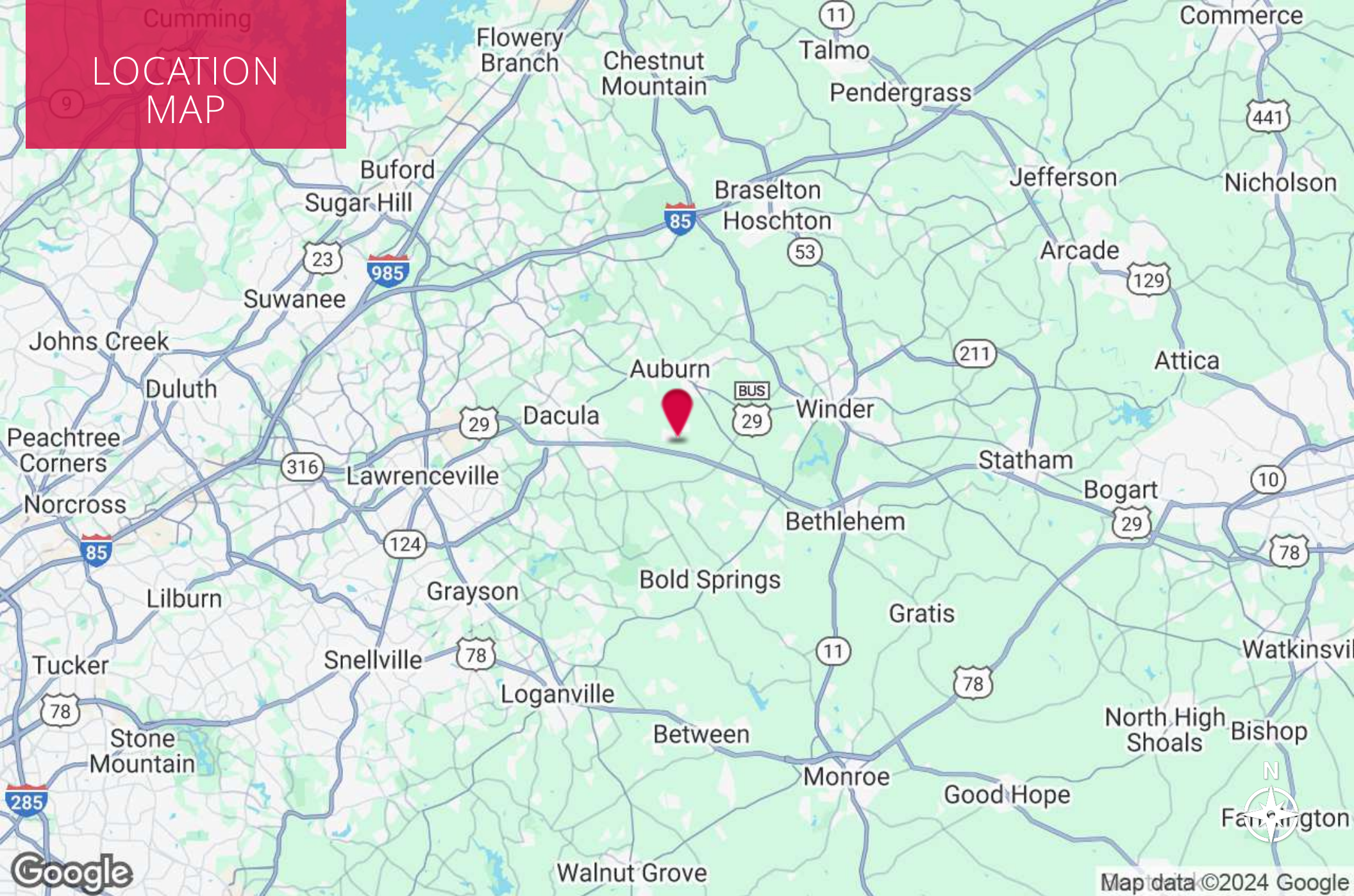
King Industrial
Realty, Inc.

CORFAC
INTERNATIONAL

Industrial • Commercial • Investment
404.942.2000 | kingindustrial.com

Cumming

LOCATION MAP



Map data ©2024 Google

GUY WATKINS

Vice President
 770.712.9100
 gwatkins@kingindustrial.com

Every effort has been made to provide accurate information, but no liability is assumed for errors or omissions.



Industrial • Commercial • Investment
 404.942.2000 | kingindustrial.com

EXCLUSIVELY LISTED BY:

GUY WATKINS

Vice President

gwatkins@kingindustrial.com

770.712.9100

King *Industrial
Realty, Inc.*

Industrial • Commercial • Investment
404.942.2000 | kingindustrial.com