

28500 Hayes Road

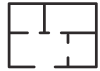
Roseville, MI

- 5,346 Square Feet For Lease
- Well-Maintained Industrial Park
- Main Road Frontage
- 1 Mile to I-696
- Room to Expand

INDUSTRIAL BUILDING FOR LEASE



3,576 SF of Factory



1,770 SF of Office



(2) 12'x14' Grade Level Doors



FOR MORE INFORMATION:

Jason Capitani, SIOR, CCIM
Managing Partner
248.637.7684
jcapitani@LMCap.com



L. MASON CAPITANI
CORFAC INTERNATIONAL

CELEBRATING 60 YEARS

248.637.9700 | LMCap.com

Information contained herein was obtained from sources deemed to be reliable but is not guaranteed. Subjects to prior sales, changes of price or withdrawal.

28500 Hayes Road

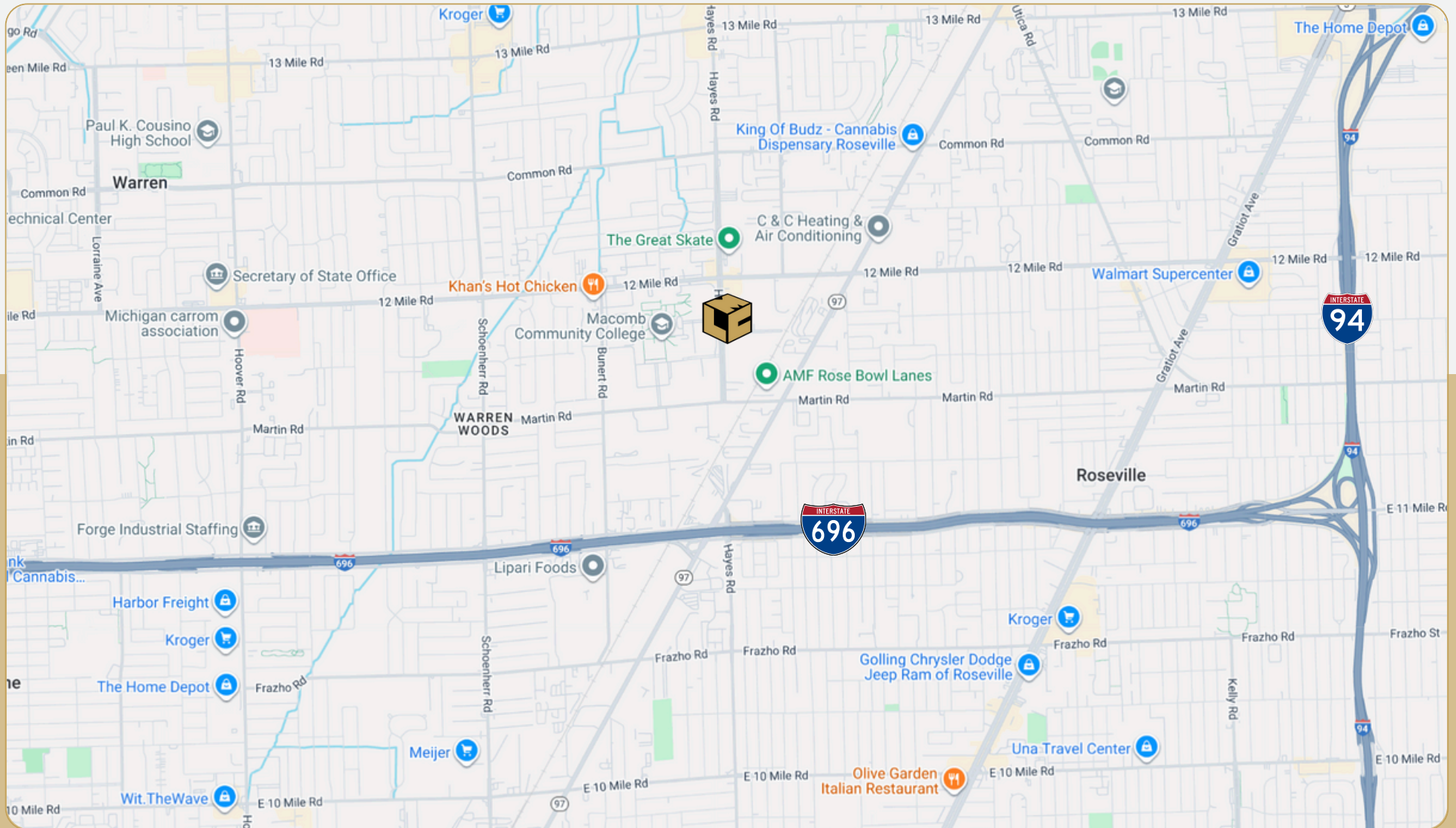
Roseville, MI



L. MASON CAPITANI

CORFAC INTERNATIONAL

CELEBRATING 60 YEARS



248.637.9700 | LMCap.com

Information contained herein was obtained from sources deemed to be reliable but is not guaranteed. Subjects to prior sales, changes of price or withdrawal.

28500 Hayes Road

Roseville, MI



L. MASON CAPITANI

CORFAC INTERNATIONAL

CELEBRATING 60 YEARS



248.637.9700 | LMCap.com

Information contained herein was obtained from sources deemed to be reliable but is not guaranteed. Subjects to prior sales, changes of price or withdrawal.

28500 Hayes Road

Roseville, MI



L. MASON CAPITANI

CORFAC INTERNATIONAL

CELEBRATING 60 YEARS

Industrial Property Details:

Details:

Total SF:	5,346 SF
Available SF:	5,346 SF
Office SF:	1,770 SF
Factory SF:	3,576 SF
Zoning:	I-2
Expandable:	Yes
Intersection:	Hayes & 12 Mile Road
X-Way Distance:	1 Mile to I-696
Year Built:	1970
Occupancy:	Immediate

Interior:

Ceiling Height:	18'
Bay Size:	Clear Span
Restrooms:	3
Power:	Primary
Power Details:	240V
Lighting:	LED
Truckwells:	No
Grade Door:	(2) 12'x14'
Heating:	Gas Forced Air
A/C:	Office Only
Notes:	Second floor offices. Very clean space.

Economic

Lease/SF:	\$7.95
Lease/Month:	\$3,541.73
Lease Terms:	Mod. Gross
Occupancy:	Immediate
Status:	Existing