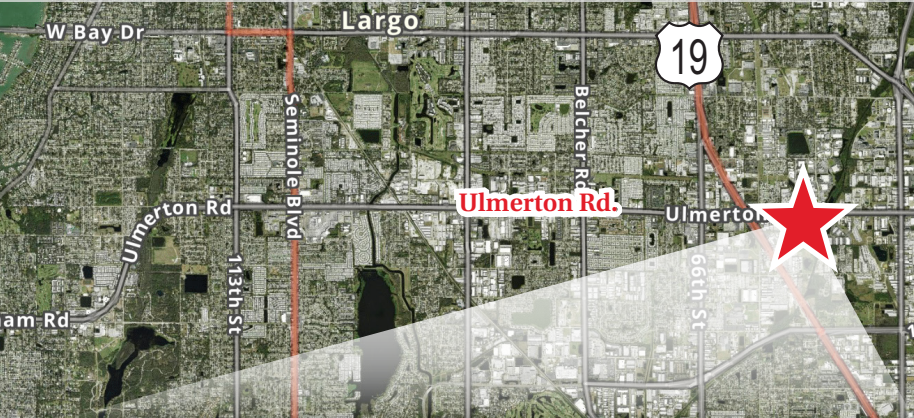


5850 ULMERTON ROAD

INDUSTRIAL MANUFACTURING FOR LEASE

CLEARWATER, FLORIDA



TOTAL AREA | 40,431 SF

OFFICE AREA | 8,620 SF

WAREHOUSE AREA | 31,811 SF

WAREHOUSE MEZZANINE | 1,611 SF

- PRIME LOCATION WITH EXCELLENT ACCESS TO AIRPORTS, MAJOR INTERSTATES, AND BRIDGES CONNECTING HILLSBOROUGH, PINELLAS, AND PASCO COUNTIES
- CONVENIENT TO ST. PETERSBURG/CLEARWATER AIRPORT AND TAMPA INTERNATIONAL AIRPORT
- SIGNAGE OPPORTUNITY ON ULMERTON RD.

CONTACT

DAVID MOSKOVITZ
TEL: 813.928.0394
DMOSKOVITZ@CRDPT.COM

4488 W BOY SCOUT BLVD.
SUITE 250
TAMPA, FL 33607

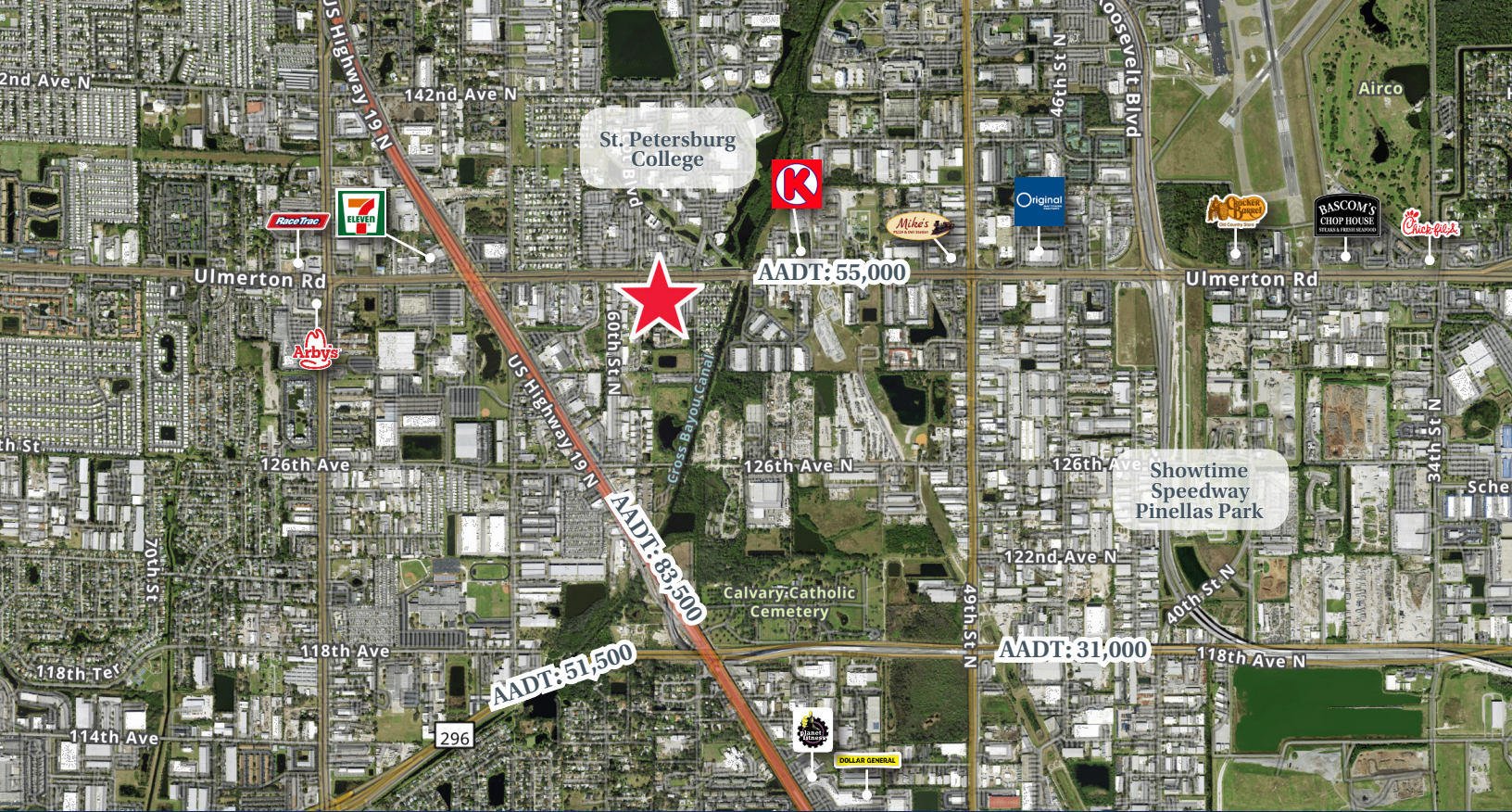
5850 ULMERTON ROAD

INTERIOR

- IMMACULATE SHOWROOM AND OFFICE SPACE
- OUTDOOR STORAGE
- DOCK-HIGH AND GRADE-LEVEL LOADING AVAILABLE

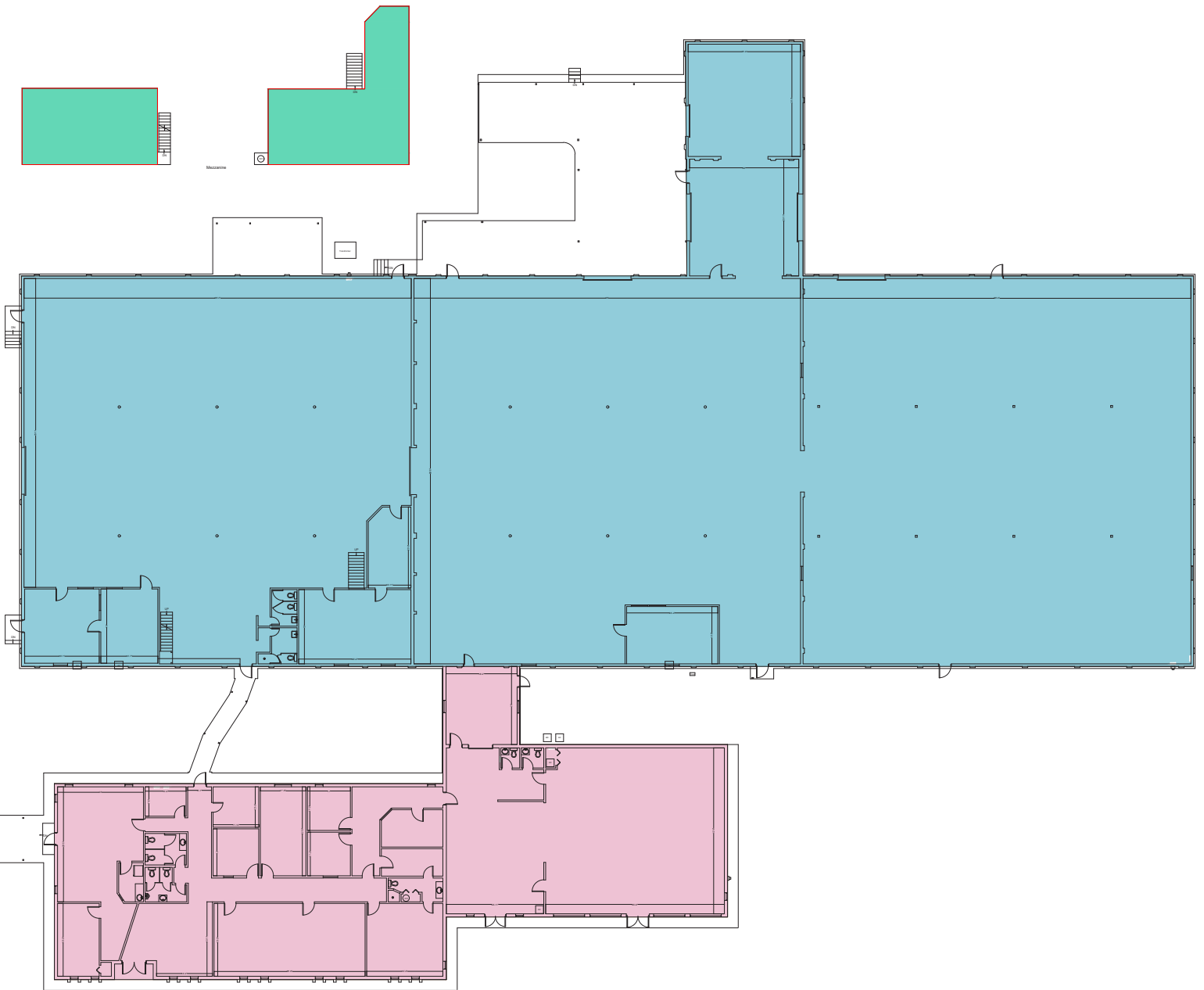
- CONCRETE BLOCK
- AMPLE PARKING
- FLEXIBLE INTERIOR DESIGN AND FINISHES
- 20' CLEAR HEIGHT





5850 ULMERTON ROAD





SITE PLAN



CONTACT

DAVID MOSKOVITZ
TEL: 813.928.0394
DMOSKOVITZ@CRDPT.COM

4488 W BOY SCOUT BLVD.
SUITE 250
TAMPA, FL 33607

	TOTAL AREA 40,431 SF
	OFFICE AREA 8,620 SF
	WAREHOUSE AREA 31,811 SF
	WAREHOUSE MEZZANINE 1,611 SF