

For Sale

Owner-User Office Opportunity on California Ave.



557 California Ave.
Reno, NV 89509

Alex Mendoza
Associate
775.657.1214
amendoza@logicCRE.com
S.0183508

Listing Snapshot



\$985,000
Sale Price



± 2,102 SF
Total Square Footage



011-142-01
APN

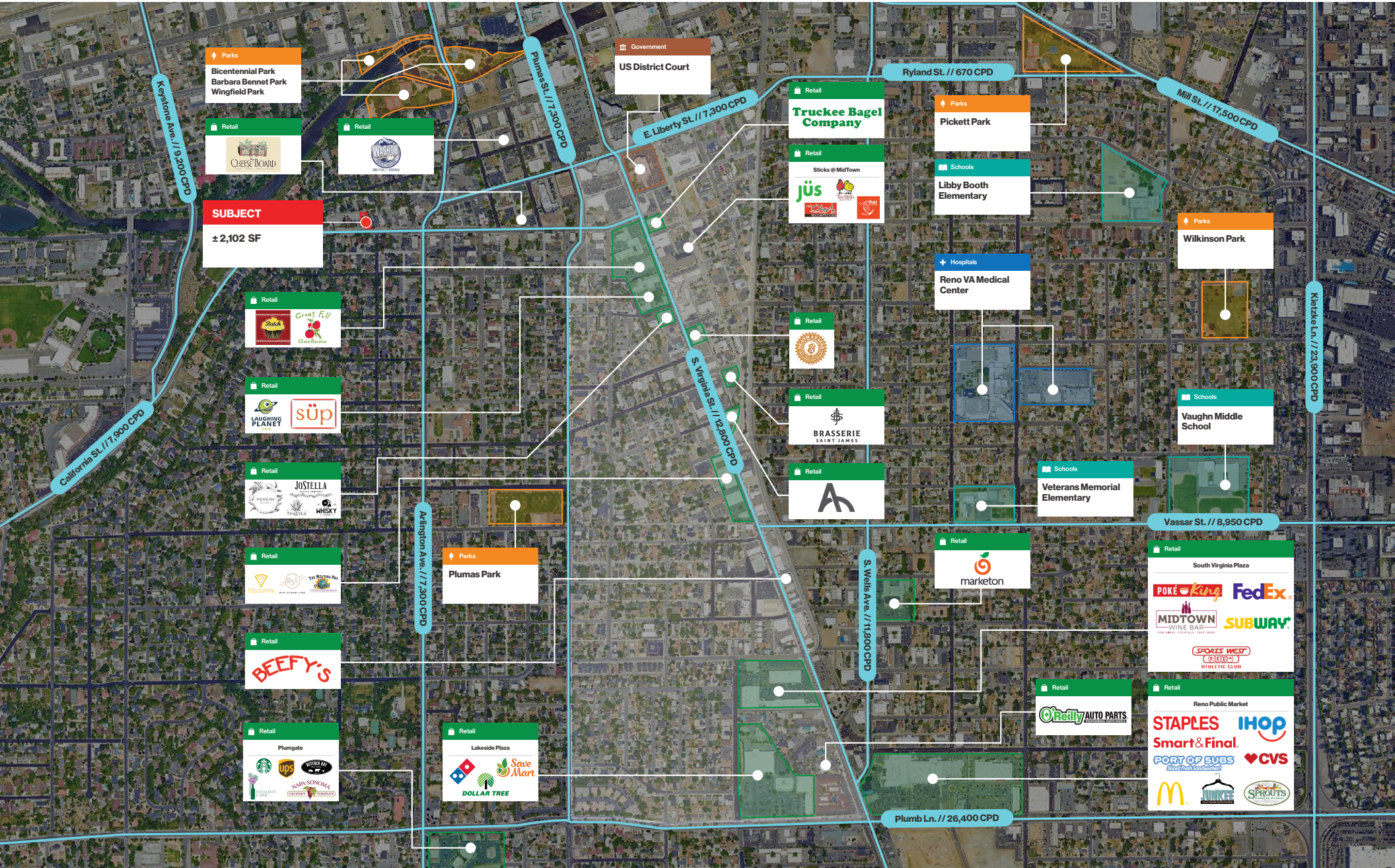
Property Highlights

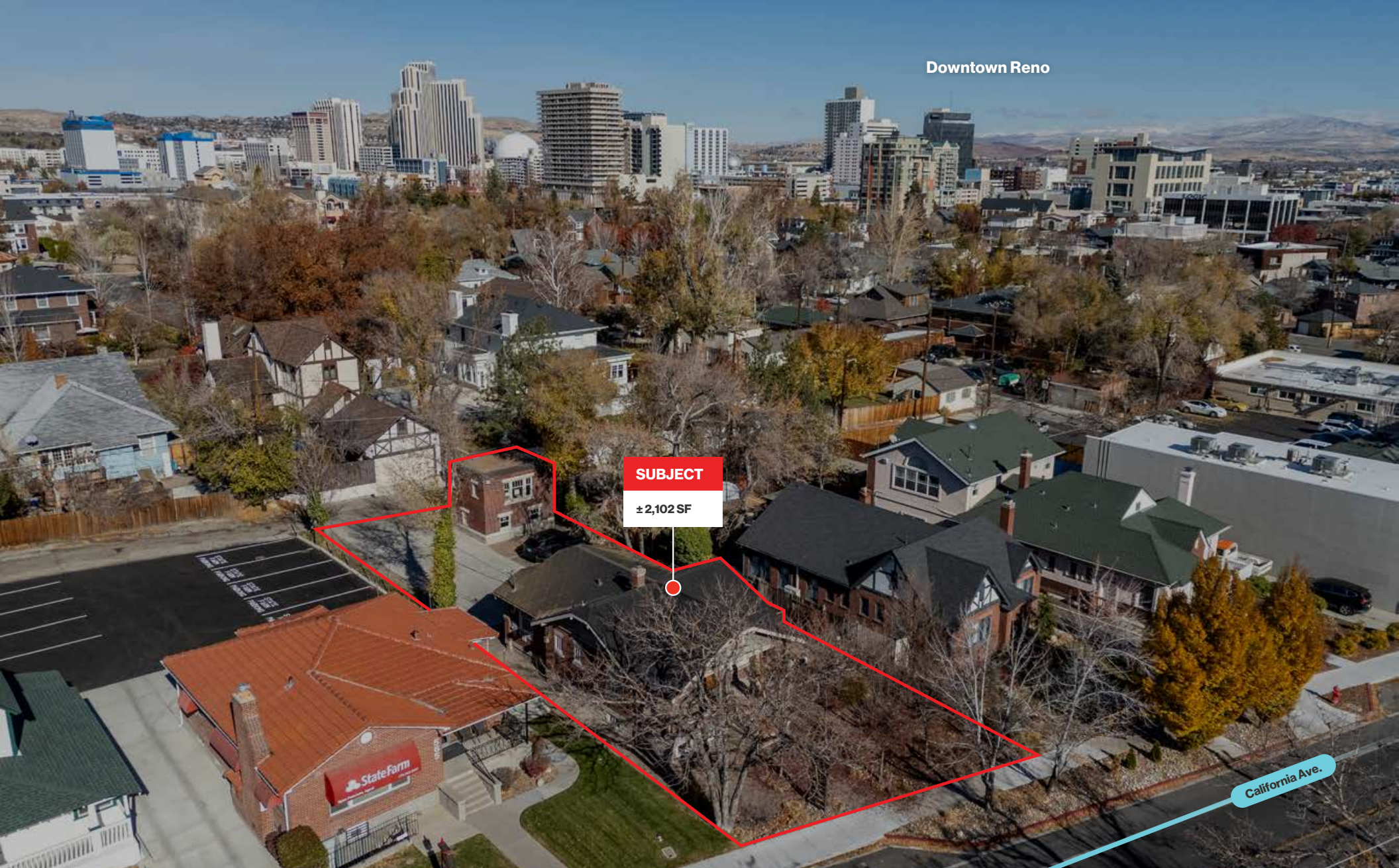
- ± 1,526 SF two-story office, plus a ± 576 SF single-family unit on same parcel
- Turn-key office - residential unit needs rehab
- Four (4) on-site parking spaces
- Located within half a mile of Reno Justice Court
- Four (4) private offices and one (1) restroom on first floor
- Densely populated residential and professional office neighborhood

Demographics

	1-mile	3-mile	5-mile
2024 Population	19,039	137,384	238,256
2024 Average Household Income	\$85,946	\$89,850	\$96,847
2024 Total Households	11,032	59,755	99,968



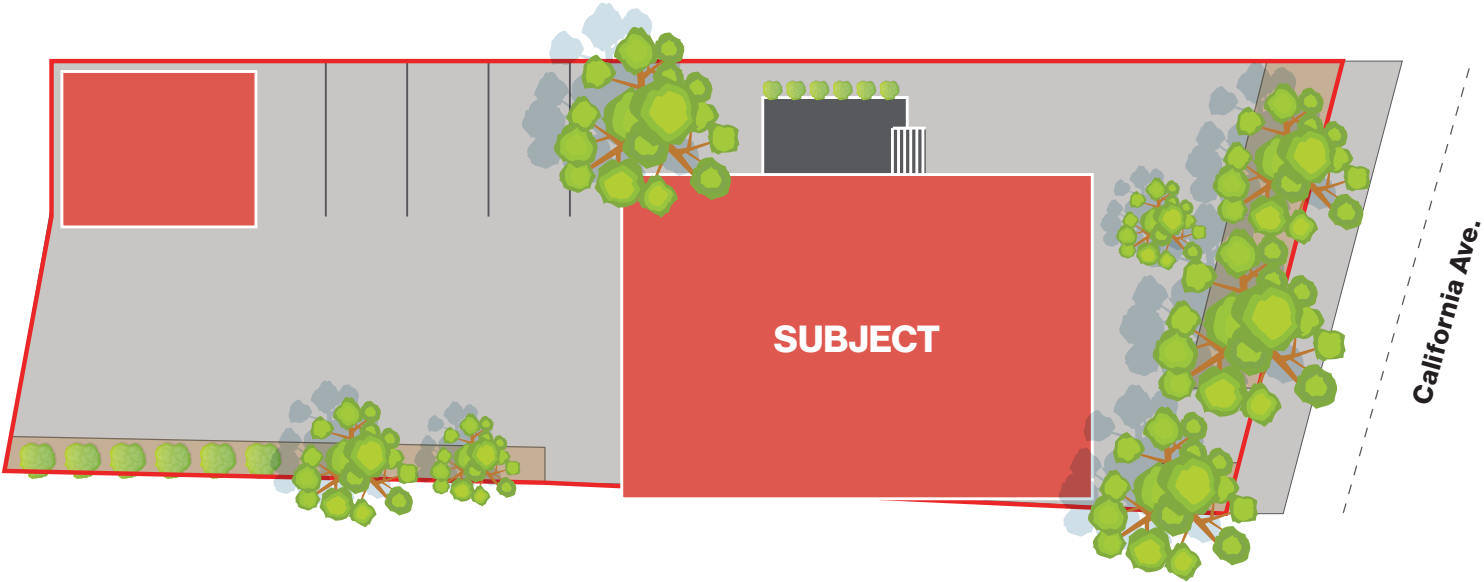




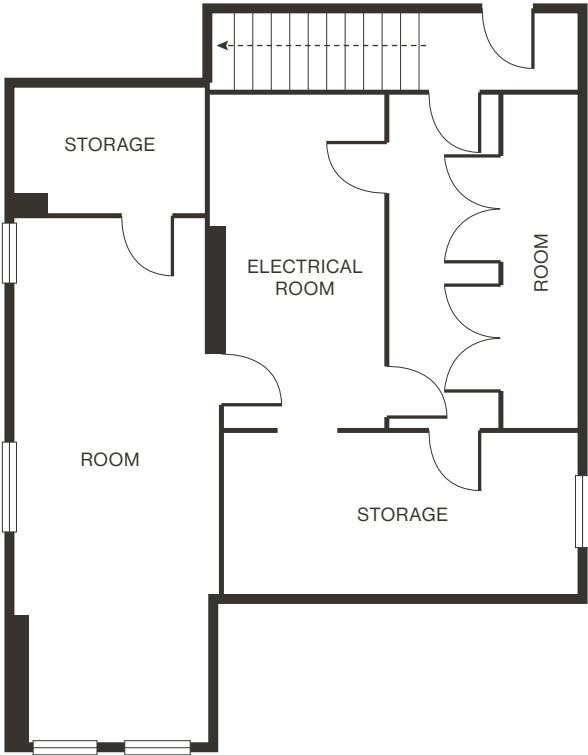
Downtown Reno

SUBJECT
± 2,102 SF

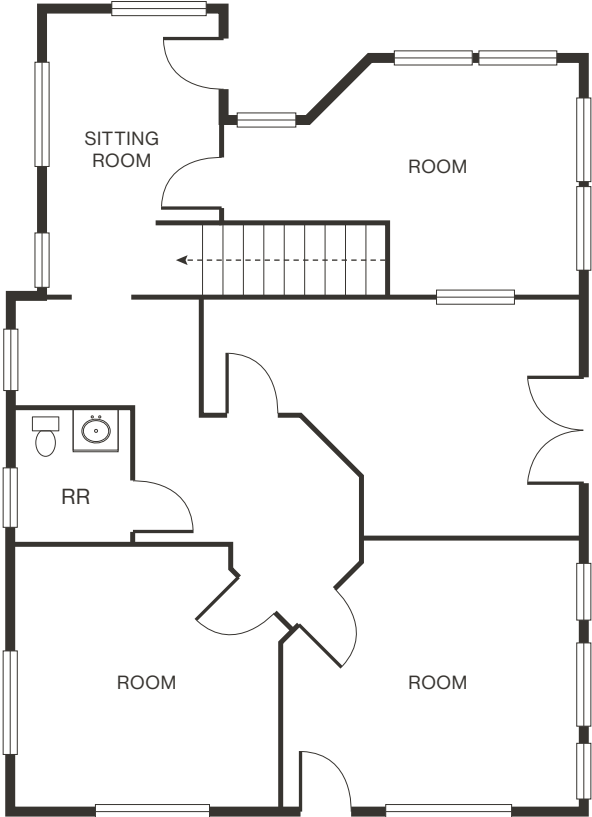
California Ave.



Floor Plan



First Floor



Second Floor

Property Photos



Key Figures of Northern Nevada

The city of Reno and Northern Nevada have seen exponential population and employment growth over the past 5 years. These increases are a direct reflection of the community, culture, and economy that Nevada has to offer.



2023
Population

724_k

Northern Nevada Population



2023
Travel

3.9_{MM}

Annual Visitors Reno-Tahoe Area



2023
Visitors

469_k

Hotel Rooms Available in Reno-Tahoe Area

50_{k+}

CA Residents Move to Northern Nevada

24%

Reno/Sparks Employment Growth in Past 5 Years

64%

Repeat Visitors to Northern Nevada

54%

Percentage of Visitors from California

\$1.04_B

Gross Gaming Revenue in Northern Nevada

\$887_B

Visitor Recreation Spending in Washoe County



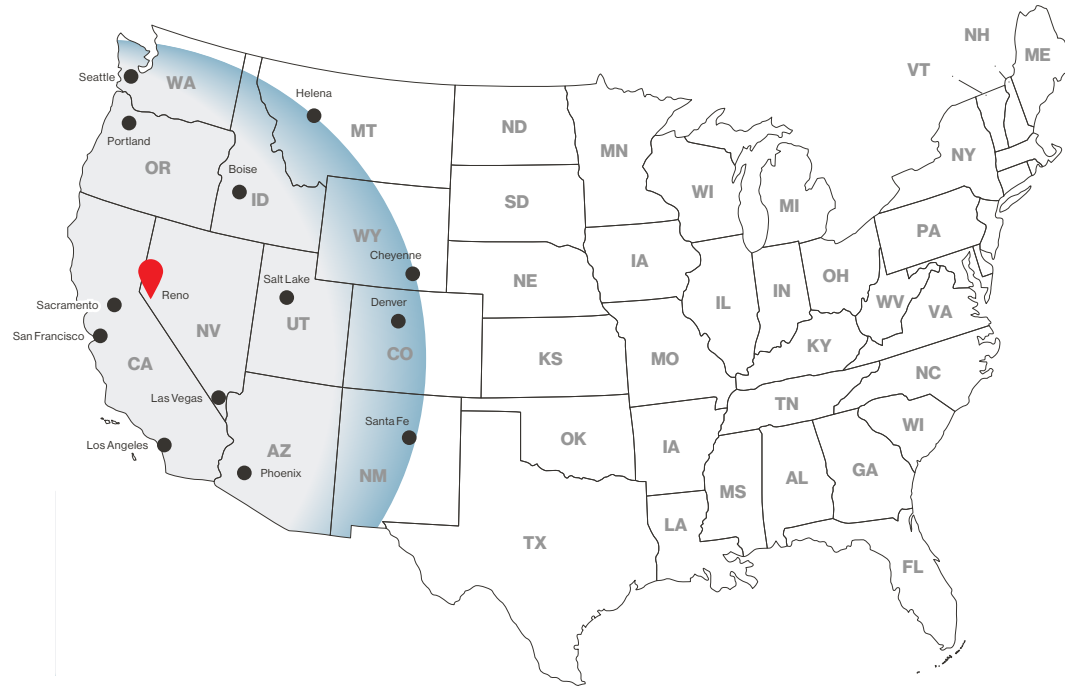
Why Nevada

Nevada is one of the most business-friendly states as it offers a very low-regulation environment. This platform offers a variety of incentives to help qualifying companies make the decision to do business in the state of Nevada. Both Money and Forbes Magazines have named the Silver State one of the most business-friendly in the country.

Nevada ranks as the 7th best state in the Tax Foundation's 2024 State Business Tax Climate Index. This index is an independent ranking of states in five areas of taxation: corporate taxes, individual income taxes, sales taxes, unemployment insurance taxes, and taxes on property, including residential and commercial property.

In comparison, the Tax Foundation's 2024 Tax Climate Index rankings for our neighboring states are significant: California ranks 48th, Arizona 14th, Idaho 16th, Oregon 28th, and Utah 8th.

Northern Nevada Transit Times



1-Day Truck Service

- San Francisco, CA
- Sacramento, CA
- Los Angeles, CA
- Portland, OR
- Seattle, WA
- Boise, ID
- Salt Lake, UT
- Las Vegas, NV
- Phoenix, AZ

2-Day Truck Service

- Helena, MT
- Cheyenne, WY
- Denver, CO
- Santa Fe, NM

Tax Free Haven

- ⊖ No Corporate Income Tax
- ⊖ No Corporate Shares Tax
- ⊖ No Franchise Tax
- ⊖ No Personal Income Tax
- ⊖ No Franchise Tax on Income
- ⊖ No Inheritance or Gift Tax
- ⊖ No Unitary Tax
- ⊖ No Estate Tax



60MM Customers

1-Day Truck Service from Northern Nevada



Power Costs

Nevada: 53% Less Than California, 25% Below U.S. Average

Nevada Relocation: Tax Incentives for Businesses

- Sales & Use Tax Reduction
- Business Tax Cut
- Personal Property Tax Break
- Recycling Property Tax Discount
- Aviation Parts Tax Relief
- Data Center Tax Savings

Opportunity Zones

61 Areas in Nevada Offer Tax Benefits on Capital Gains, with Deferrals, Reductions up to 15%, and Tax-Free Appreciation after 10 Years

A Look at Northern Nevada

Washoe County

Washoe County, situated in the northwest corner of Nevada along the California and Oregon borders, is the second most populous county in the state, boasting **over 501,673 residents**. The county's southwest corner meets the northeast corner of Lake Tahoe, while both Washoe Lake and Pyramid Lake are also encompassed within its borders.

City of Reno

Named as the US's #1 small city for 2022, Reno attracts nearly **4,000,000 visitors** annually with events like the Reno Rodeo, Hot August Nights, Reno Air Races, and Street Vibrations. The city has undergone a renaissance, boasting a thriving tech presence and a dynamic arts community, featuring street murals and sculptures. Industrial expansions in northern Nevada, especially in the Tahoe-Reno Industrial Center (TRIC) and eastern Sparks, along with marijuana legalization, have drawn investors and manufacturers from neighboring states.

University of Nevada, Reno

The University of Nevada, Reno, established in 1874 and based in Reno since 1885, comprises 13 colleges and schools, **offering more than 460 Tier-1 degree programs** and averaging over 20,945 students annually. A notable tradition is the Reno-UNLV rivalry, highlighted by the competition for the Fremont cannon. This replica cannon is awarded to the winner of the annual Reno-UNLV football game and is painted in the victorious team's colors, blue or red.

Lake Tahoe

Lake Tahoe, located less than 25 miles from downtown Reno, serves as a year-round destination for outdoor enthusiasts. It offers water sports in the summer and transforms into a winter sports haven with North America's largest concentration of ski resorts, receiving 400 inches of snow annually.



A Look at Northern Nevada

The Neon Line

The Reno Neon Line District, an emerging submarket, is rapidly expanding with the acquisition and redevelopment of properties west of downtown Reno. Led by local developer Jacobs Entertainment, this submarket revitalization blends commercial spaces and housing with a vibrant arts and entertainment scene. Spanning from West St. to Keystone Ave., and from I-80 to W. 2nd St., the Neon Line District aims to redefine urban living and leisure in Reno.

Virginia Street Project

The Virginia Street Revitalization Project has been recently completed providing a safe and seamless connection between UNR, downtown, and MidTown Reno. The Regional Transportation Commission (RTC) of Washoe County and Sierra Nevada Construction (SNC) partnered on the project which allows for increased pedestrian safety with expanded sidewalks, improved bike lines, pedestrian ramps, and ADA-compliant crosswalks. The area manages vehicle traffic flow with dual one-way traffic lanes, bus-only lanes, and enclosed bus stops.

MidTown

Over the past five years, MidTown has transformed into a sought-after destination for investors, who are infusing modern art and architecture into existing buildings. This revitalization is not only enhancing the aesthetic appeal but also bolstering the Reno economy. By fostering collaboration between entrepreneurs and business developers through a blend of redeveloped commercial spaces and residential conversions, the MidTown district is driving economic growth. Additionally, annual events organized by retail and office users are fostering community engagement, attracting residents from Reno and Sparks alike.

Greater Nevada Field

Greater Nevada Field serves as the home stadium for the Reno Aces Minor League Baseball team, the Triple-A affiliate of the Arizona Diamondbacks, since their inaugural season in 2009.



A Look at Northern Nevada

TRIC

The Tahoe-Reno Industrial Center (TRIC), the world's largest industrial park at **over 15,000 acres**, lies just nine miles east of Reno/Sparks. Accessible via I-80 and Hwy. 50, thanks to the USA Parkway expansion into Silver Springs, TRIC offers expedited shipping to seven western states within a day and the remaining four within two days.

SouthEast Connector

Completed in 2018, the SouthEast Connector offers an alternative transportation route between east Sparks and south Reno, comprising a new 5.5-mile arterial road, seven bridges, two signalized intersections, and a multi-use path for recreational users. This new roadway serves as a bypass from the congested US-395/I-580 freeway and the southwest section of McCarran Blvd.

Carson City

Carson City, the capital of Nevada, lies just south of Washoe County and boasts an estimated **population of 56,798 in 2024**. During the day, the population swells to over 63,000, driven by government employees commuting from Washoe and Douglas counties. Recent downtown renovations have spurred business growth and foot traffic, complementing Carson City's rich history and scenic allure, which consistently attract tourists year-round.

Douglas County

Douglas County, positioned along the Nevada/California border just south of Carson City, encompasses the towns of Minden, Gardnerville, and Genoa, hosting a **population exceeding 48,946 residents**. The area's ample land has attracted numerous manufacturing companies, such as Starbucks Roasting Plant, GE, and North Sails, establishing a robust industrial presence in the region.



LOGIC Commercial Real Estate

Specializing in Brokerage and Receivership Services



LOGIC



Join our email list and
connect with us on LinkedIn

The information herein was obtained from sources deemed reliable; however LOGIC Commercial Real Estate makes no guarantees, warranties or representation as to the completeness or accuracy thereof.

For inquiries please reach out to our team.

Alex Mendoza
Associate
775.657.1214
amendoza@logicCRE.com
S.0183508