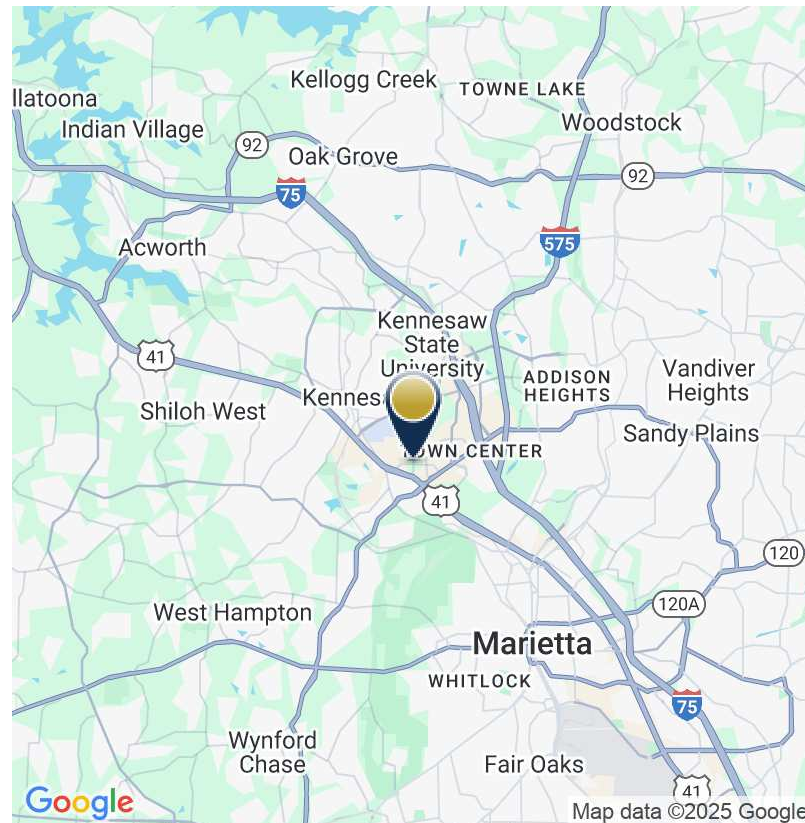




PROPERTY HIGHLIGHTS

- ±32,725 SF office building located in Kennesaw, GA
- Conveniently located near I-75 & I-575 Cobb Pkwy & Barrett Pkwy
- ±1,460-8,787 SF available for lease
- Suite 100 – 1,462 SF | Available immediately
- Suite 110 – 1,472 SF | Available immediately
- Suite 210 – 2,930 SF | Available immediately
- Suite 215 – 1,463 SF | Available immediately
- Suite 225 – 1,460 SF | Available immediately
- Up to +/-5,853 SF contiguous space available
- All suites have walk-up entrances and private restroom(s)
- Parking ratio: 4.8/1,000 SF surface parking Tenant has HVAC control
- Elevator & two covered staircases



AREA INFORMATION



HOUSEHOLDS (1 MILE)

58,278



AVG. HH INCOME (1 MILE)

\$83,762



POPULATION (1 MILE)

152,195



RETAILER MAP

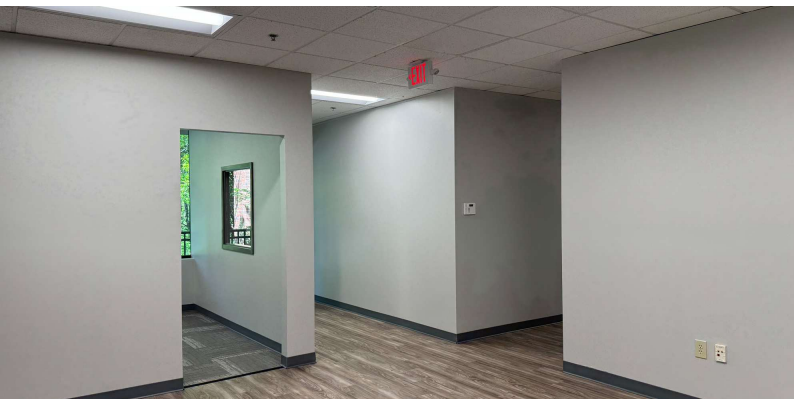


CONTACT



SEAN WILLIAMS
S.V.P. The Office Group
404-876-1640 x126
Sean@BullRealty.com
BullRealty.com

BULL REALTY, INC.
50 Glenlake Parkway, Suite 600
Atlanta, GA 30328
BullRealty.com

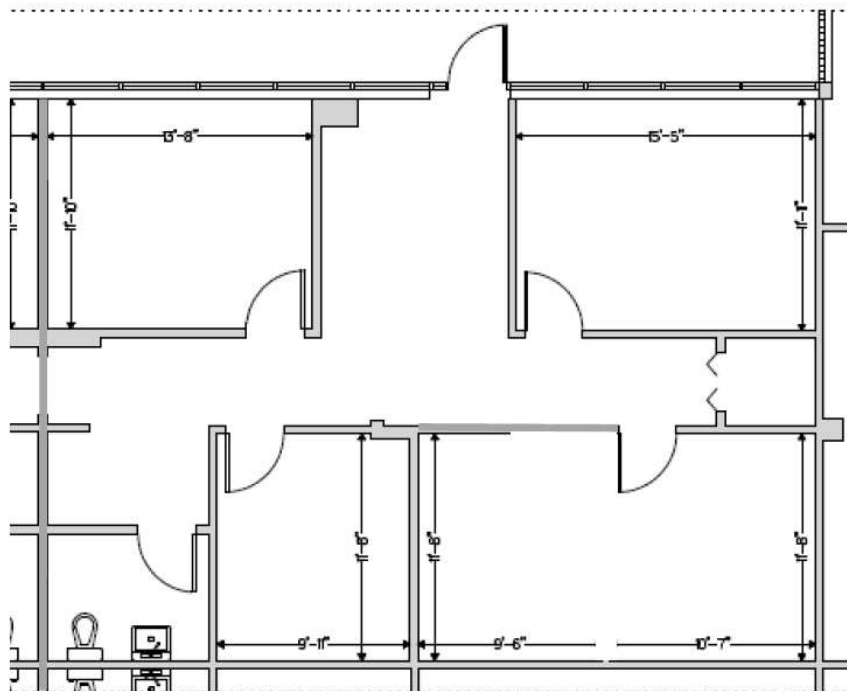
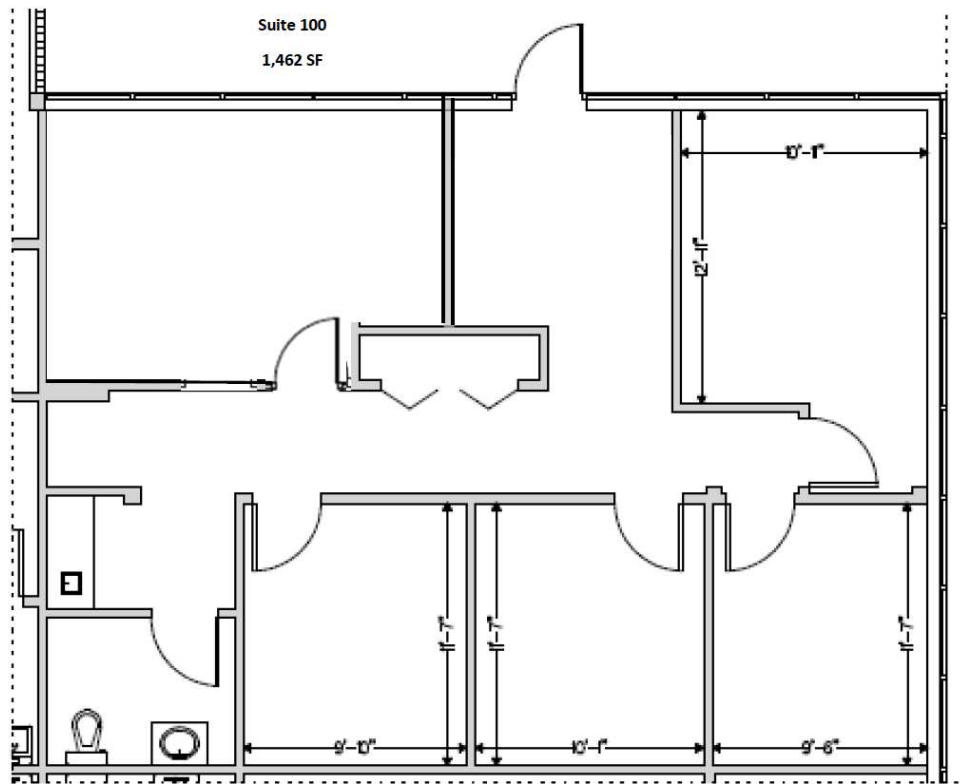


CONTACT



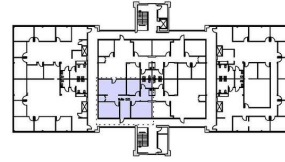
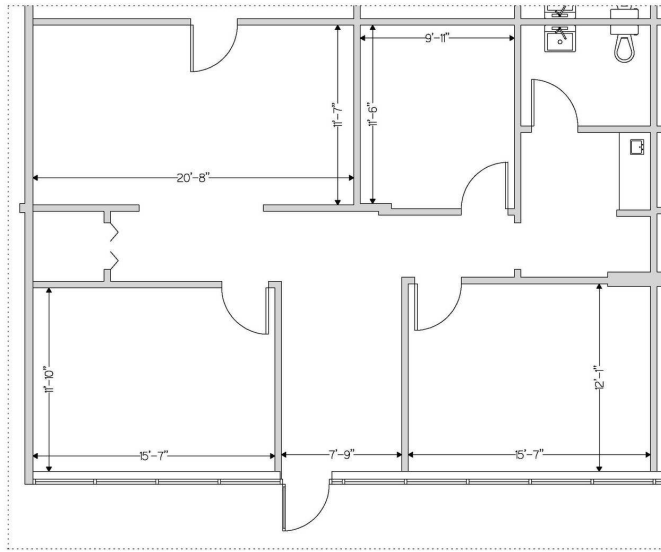
SEAN WILLIAMS
S.V.P. The Office Group
404-876-1640 x126
Sean@BullRealty.com
BullRealty.com

BULL REALTY, INC.
50 Glenlake Parkway, Suite 600
Atlanta, GA 30328
BullRealty.com




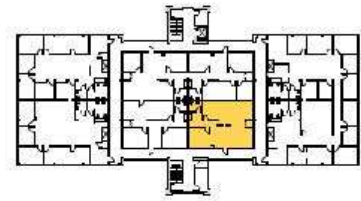
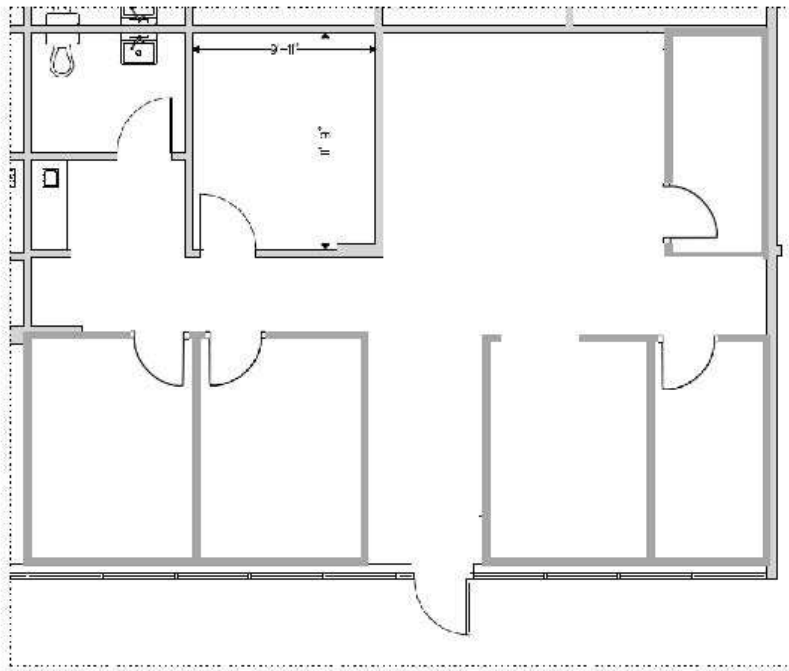
Suite 110—1,472 SF





Suite 225 - 1,460 SF

DATE MEASURED:	ADDRESS:	 <small>ATLANTA ORLANDO TAMPA</small> <small>770.884.6402 407.971.8088 202.548.4995</small> <small>www.measureDYNAMICS.com</small>
October 2011	Barrett Court 1925 Vaughn Road Suite 225 Kennesaw, Georgia	



Suites 230
±1,463 SF



